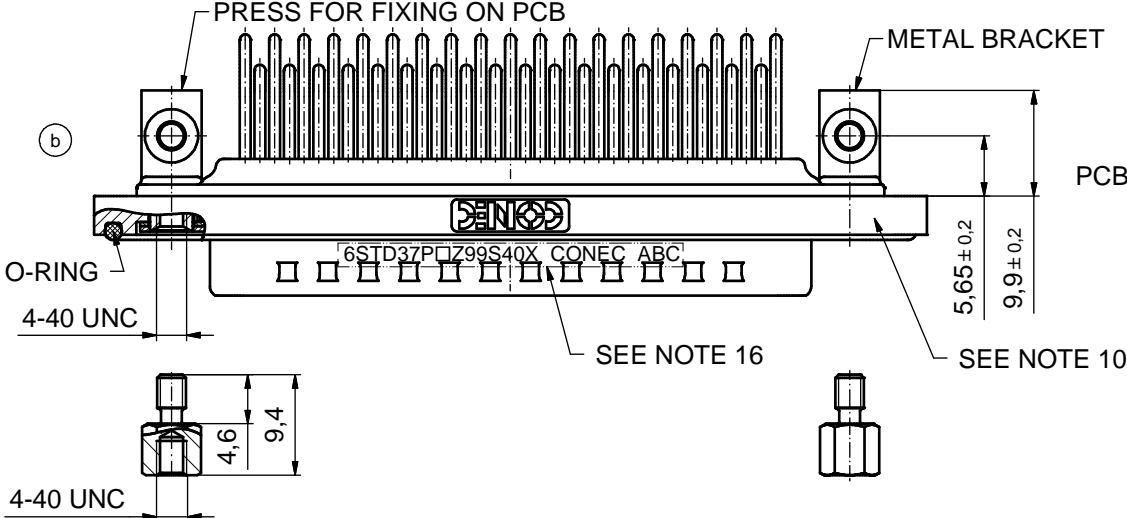
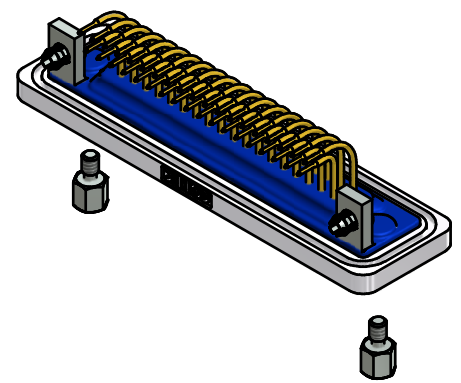
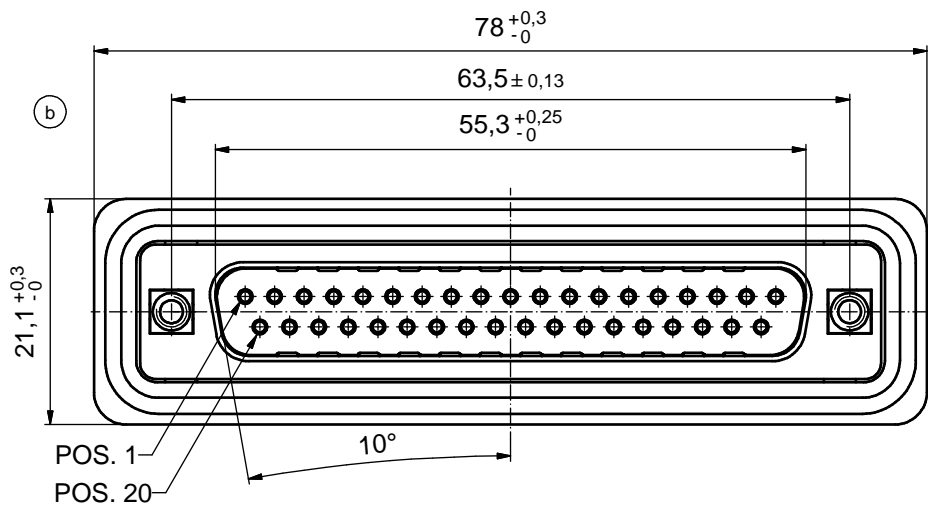
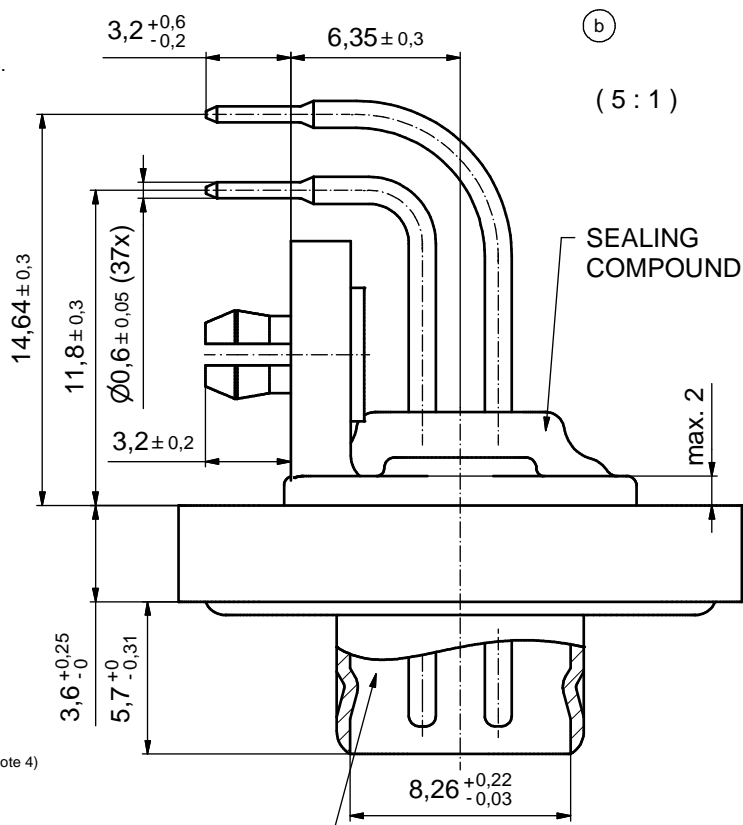


**NOTES:** (b)

1. FOR WAVESOLDERING (SOLDER BATH TEMPERATURE 240°C FOR 5 SEC. AND SOLDER PREHEAT 120°C FOR 120 SEC.)
2. METALSHELLS: COPPER ALLOY; min. 315µm TIN over 40-80µm NICKEL
3. INSULATORS: PBT GF UL 94 V-0, BLACK
4. CONTACTS: COPPER ALLOY; PLATING (SEE PART NO.):
  - PLEASE ADD A for GOLD FLASH over NICKEL (PREFERRED TYPE)
  - PLEASE ADD B for 20µm HARD GOLD over min. 50µm NICKEL
  - PLEASE ADD C for 30µm HARD GOLD over min. 50µm NICKEL
5. METAL BRACKETS: ZINC DIE CAST; 300µm COPPER/ 40-120µm NICKEL/120-200µm TIN
6. THREADED INSERTS: COPPER ALLOY; min. 200µm TIN over 80µm NICKEL
7. COLLARS: COPPER ALLOY; NICKEL PLATED
8. PCB-SNAPS: COPPER ALLOY; min. 200µm TIN over 80µm NICKEL  
PCB-HOLE: Ø3,1±0,1; PCB THICKNESS 1,6mm
9. HEXLOCKING SCREWS: STAINLESS STEEL
10. FRAME: ZINC DIE CAST; NICKEL PLATED
11. O-RING: SILICON; BLUE
12. RUBBER GASKET: TPE
13. SEALING COMPOUND: PUR; BLUE
14. P.C.B. HOLE DRILLINGS AND RECOMMENDED PANEL CUT-OUT ON SHEET 2
15. RECOMMENDED TORQUE FOR MOUNTING SCREW 35N cm (3.1 in.LB) / max. 40N cm (3.5 in.LB)
16. CONNECTOR IS PART MARKED: **6STD37P□Z99S40X CONEC ABC** (see note 4)

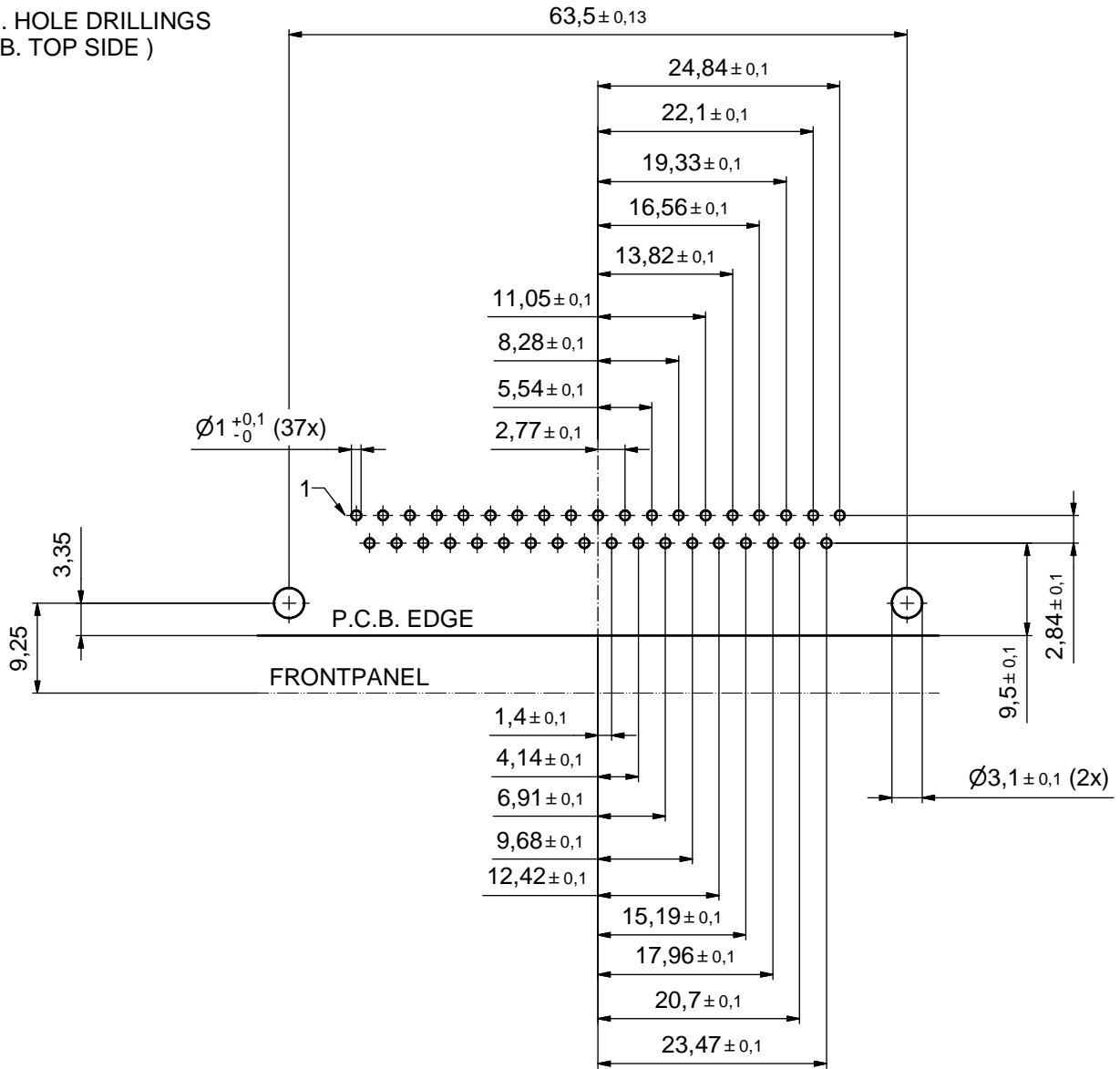


AT ALL TIMES WATER RESISTANT CONNECTORS NOT IN USE SHOULD BE COVERED WITH A CONEC WATER RESISTANT CAP OR WATER TIGHT HOOD.

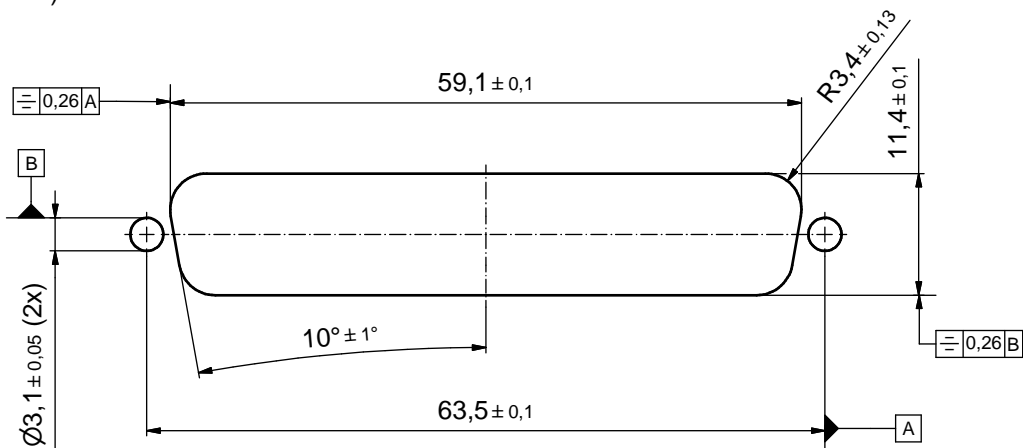
Directive 2002/95/EC RoHS compliant

THIS DRAWING MAY NOT BE COPIED OR REPRODUCED IN ANY WAY, AND MAY NOT BE PASSED ON TO A THIRD PARTY WITHOUT WRITTEN PERMISSION. OWNERSHIP AND COPYRIGHT OF CONEC GmbH DO NOT ALTER CAD DRAWING BY HAND	tolerance		dim. in mm		scale:	2:1 (5:1)
					material:	SEE NOTES
	drawn	04.12.12	Henneboel		title:	
	appd.	04.12.12	Koch			
	norm					
d-old	18K1A306				dwg no:	15K1A1238 (b)
5 x b	A4569	04.12.2012	K.H.	D-SUB MALE 90° 37pos. SOLDER PIN ANGLED with threaded insert, metal bracket, snap and hex bolt		DIN-A3
a	Original					sh: 1/2
rev.	description	date	name			part no: 6STD37P□Z99S40X (see note 4)

P.C.B. HOLE DRILLINGS  
( P.C.B. TOP SIDE )



RECOMMENDED PANEL CUT-OUT (b)



THIS DRAWING MAY NOT BE COPIED OR REPRODUCED IN ANY WAY, AND MAY NOT BE PASSED ON TO A THIRD PARTY WITHOUT WRITTEN PERMISSION. OWNERSHIP AND COPYRIGHT OF CONEC GmbH DO NOT ALTER CAD DRAWING BY HAND				tolerance		scale: 2:1	
					dim. in mm	material: SEE SHEET 1	
				date	name	title:	
				drawn	04.12.12	Henneboel	P.C.B. HOLE DRILLINGS RECOMMENDED PANEL CUT-OUT D-SUB Male 37pos. Solder pin angled 90°
				appd.	04.12.12	Koch	
			norm			dwg no:	
			d-old			DIN-A3	
1 x b	Ä4569	04.12.2012	K.H.			15K1A1238	
a	Original					part no: SEE SHEET 1	sh: 2/2
rev.	description	date	name				