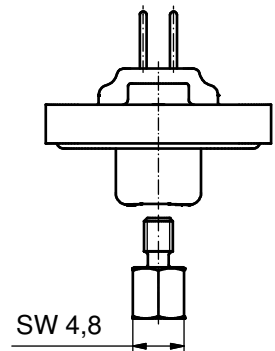
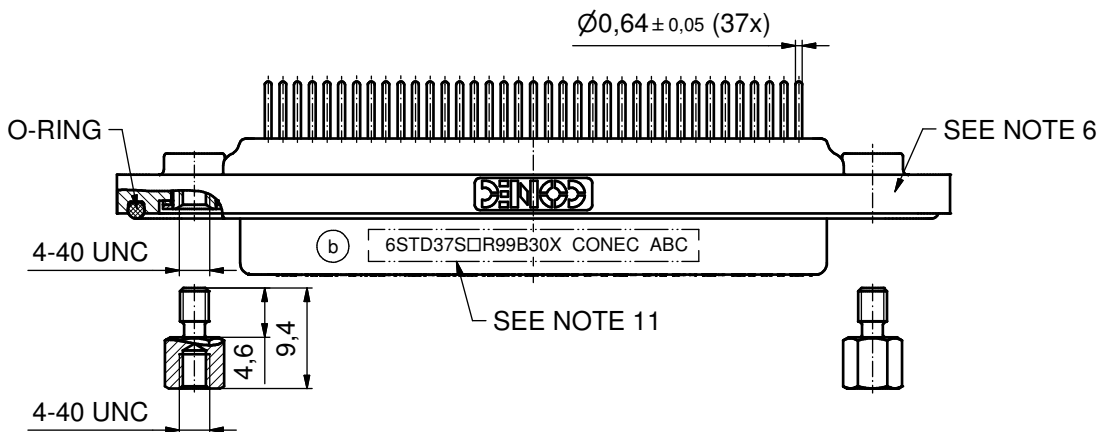
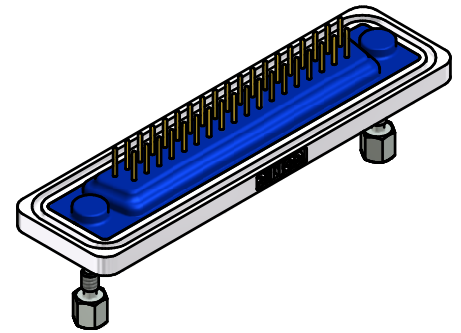
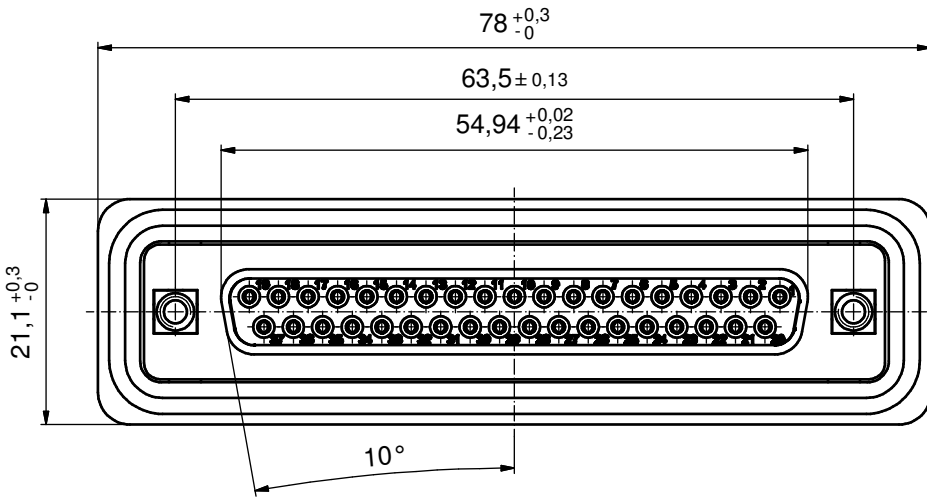
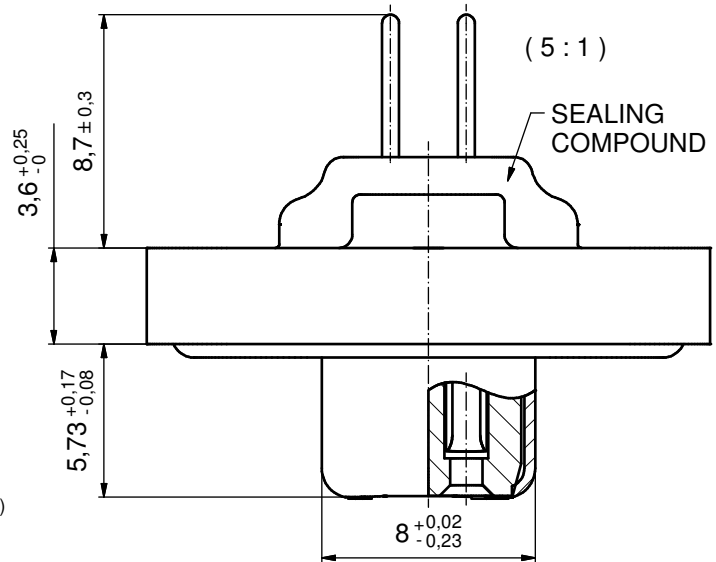


NOTES:

1. FOR WAVESOLDERING (SOLDER BATH TEMPERATURE 240°C FOR 5 SEC. AND SOLDER PREHEAT 120°C FOR 120 SEC.)
2. METALSHELLS: COPPER ALLOY; min. 315µin TIN over 40-80µin NICKEL
3. INSULATORS: PBT GF UL 94 V-0, BLACK
4. CONTACTS: COPPER ALLOY; PLATING (SEE PART NO):
- (b)** PLEASE ADD A for GOLD FLASH over NICKEL (PREFERRED TYPE)
- PLEASE ADD B for 20µin HARD GOLD over min. 50µin NICKEL
- PLEASE ADD C for 30µin HARD GOLD over min. 50µin NICKEL
5. THREADED INSERTS: COPPER ALLOY;
min. 200µin TIN over 80µin NICKEL
6. COLLARS: COPPER ALLOY; min. 200µin TIN over 80µin NICKEL
7. FRAME: ZINC DIE CAST; NICKEL PLATED
8. HEXLOCKING SCREWS: STAINLESS STEEL
9. O-RING: SILICON; BLUE
10. SEALING COMPOUND: PUR; BLUE
11. P.C.B. HOLE DRILLINGS AND RECOMMENDED PANEL CUT-OUT ON SHEET 2
12. RECOMMENDED TORQUE FOR MOUNTING SCREW 35Ncm (3,1 in.LB)
/ max. 40Ncm (3,5 in. LB)
13. CONNECTOR IS PART MARKED: 6STD37S□R99B30X CONEC ABC (see note 4)

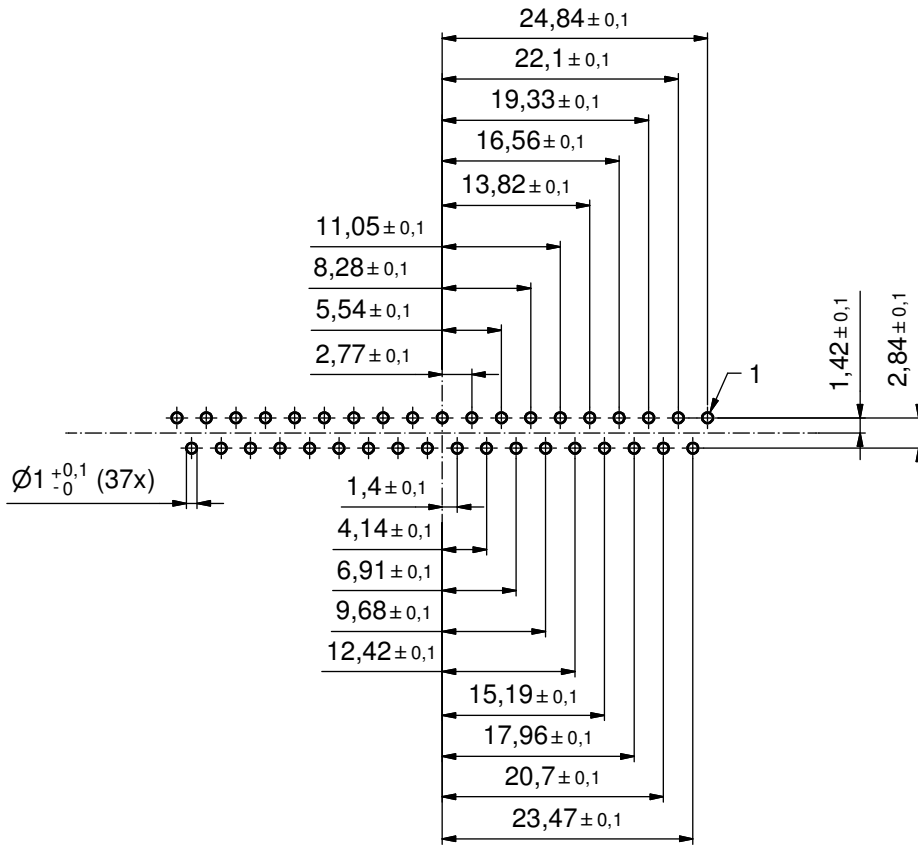


AT ALL TIMES WATER RESISTANT CONNECTORS NOT IN USE SHOULD BE COVERED WITH A CONEC WATER RESISTANT CAP OR WATER TIGHT HOOD.

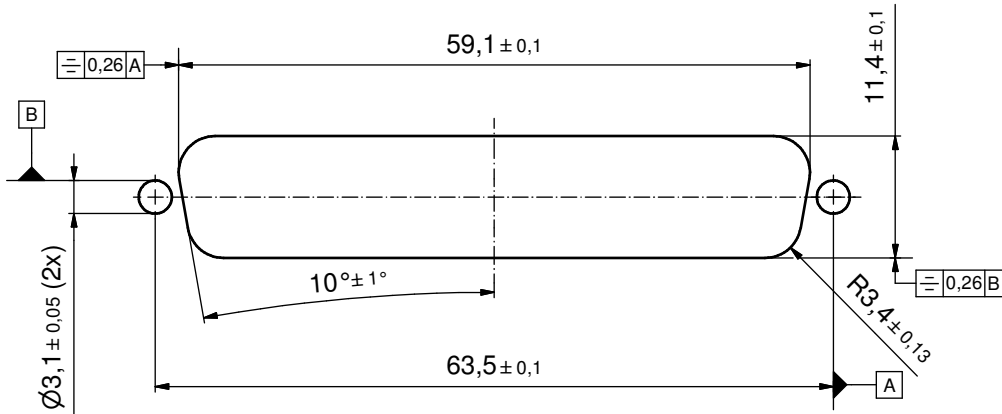
Directive 2002/95/EC RoHS compliant

THIS DRAWING MAY NOT BE COPIED OR REPRODUCED IN ANY WAY, AND MAY NOT BE PASSED ON TO A THIRD PARTY WITHOUT WRITTEN PERMISSION. OWNERSHIP AND COPYRIGHT OF CONEC GmbH DO NOT ALTER CAD DRAWING BY HAND	tolerance		dim. in mm		scale:	2:1 (5:1)			
					material:	SEE NOTES			
			date	name		title: D-SUB FEMALE 37pos. SOLDER PIN STRAIGHT with threaded insert and hexlocking screw			
			drawn	31.03.10	Lehmenkühler				
			appd.	31.03.10	Fischer				
		norm			dwg no: 15K1A610 b				
		d-old	18K1A376					DIN-A3 sh: 1/2	
3 x b	A5086	05.02.2014	K.H.	CONEC ®					
a	Origin								
rev.	description	date	name	part no: 6STD37S□R99B30X (see note 4)					

P.C.B. HOLE DRILLINGS
(P.C.B. TOP SIDE)



RECOMMENDED PANEL CUT-OUT



THIS DRAWING MAY NOT BE COPIED OR REPRODUCED IN ANY WAY, AND MAY NOT BE PASSED ON TO A THIRD PARTY WITHOUT WRITTEN PERMISSION. OWNERSHIP AND COPYRIGHT OF CONEC GmbH DO NOT ALTER CAD DRAWING BY HAND				tolerance		scale: 2:1
				date	name	material: SEE SHEET 1
				drawn	31.03.10	Lehmenkühler
				appd.	31.03.10	Fischer
				norm		
			d-old			
			a	Origin		
			rev.	description	date	name
			CONEC [®]			title: P.C.B. HOLE DRILLINGS RECOMMENDED PANEL CUT-OUT D-SUB FEMALE 37pos. SOLDER PIN STRAIGHT
						dwg no: 15K1A610
						DIN-A3 sh: 2/2
						part no: SEE SHEET 1