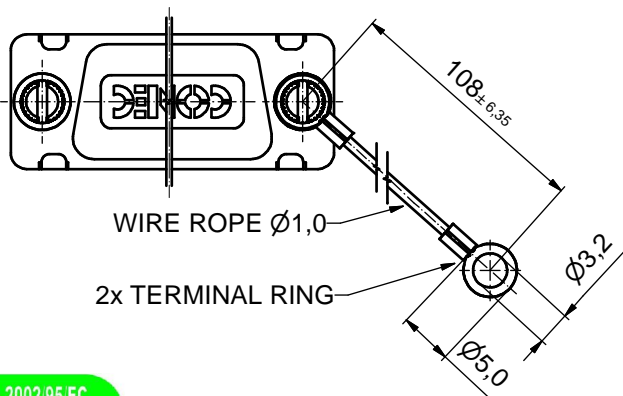
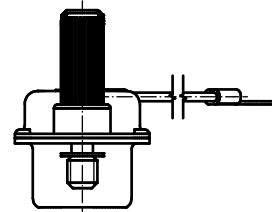
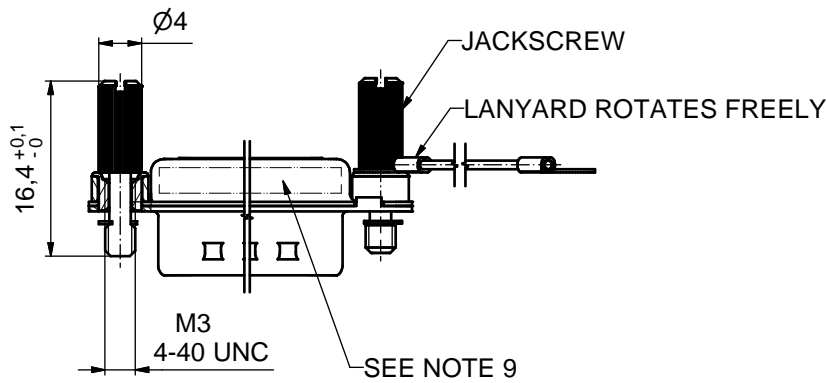
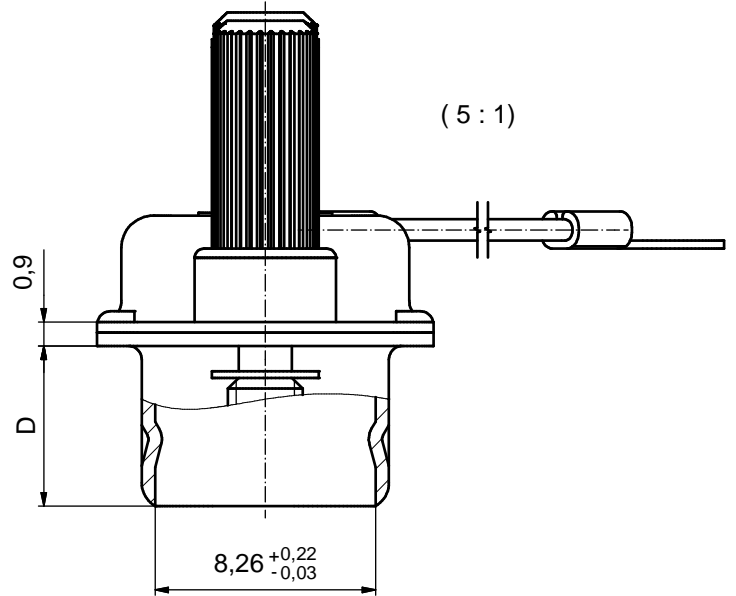
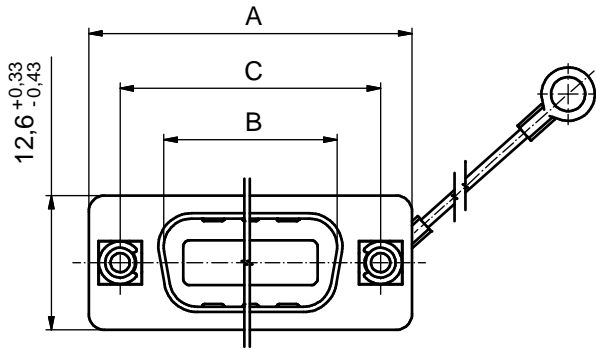


(5:1)



No. of pos.	A ^{-0.76}	B ^{+0.25}	C	D ^{-0.3}
9	31,19	16,79	25,00 ^{+0.12 -0.10}	6,12
15	39,52	25,12	33,30 ^{+0.15}	6,12
25	53,42	38,84	47,04 ^{±0.13}	5,99
37	69,70	55,30	63,50 ^{+0.13 -0.11}	5,99

Directive 2002/95/EC
"RoHS"
Compliant

Part No. for socket connector		
No. of pos.	UNC 4-40	M 3
9	16-000280	16-000230
15	16-000290	16-000240
25	16-000300	16-000250
37	16-000310	16-000260

NOTES:

- METALSHELLS: COPPER ALLOY; min. 315µin TIN over 40-80µin NICKEL
- THREADED INSERT: COPPER ALLOY; min. 200µin TIN over 80µin NICKEL
- COLLAR: COPPER ALLOY; min. 200µin TIN over 80µin NICKEL
- JACKSCREW: STAINLESS STEEL 1.4305
- WIRE ROPE: STAINLESS STEEL 1.4401
- RETAINING WASHER: STAINLESS STEEL 1.4122
- TERMINAL RING: UNINSULATED, COPPER ALLOY; min. 200µinTIN over 80µin NICKEL
- MAXIMUM TORQUE VALUE FOR THREAD: 6in.LB
- CONNECTOR IS PART MARKED: PART NO. CONEC ABC

THIS DRAWING MAY NOT BE COPIED OR REPRODUCED IN ANY WAY, AND MAY NOT BE PASSED ON TO A THIRD PARTY WITHOUT WRITTEN PERMISSION. OWNERSHIP AND COPYRIGHT OF CONEC GmbH DO NOT ALTER CAD DRAWING BY HAND	tolerance ISO 2768-m		dim. in mm		scale: 2:1 (5:1)
	date		name		material: SEE NOTES
	drawn	30.04.08	Sonnenberg		title: SCREEN CAP 9-37pos. FOR SOCKET CONNECTOR with threaded insert, jackscrew and wire rope
	appd.	30.04.08	Fischer		
	norm				
d-old					
1 x b	Ä 3186	17.11.2008	Petker	dwg no: Inventor 10	DIN-A3
a	Origin			16K1A2276	sh: 1
rev.	description	date	name		
				part no: see table	