

ARCOTRONICS

Castanet • Tantalum • Capacitors

Wet Tantalum Tubular Capacitors

CECC & ESA
Axial & Surface Mount **2**

MIL-PRF-39006
Axial **7**

DSCC Drawing 93026
Ultra Hi-CV
Axial **16**

High Temperature 200°C
Axial & Surface Mount **17**

150 Volt Rated
Axial & Surface Mount **23**

Modular Concepts
Standard TM & Custom **24**



THE QUEEN'S AWARDS
FOR ENTERPRISE:
INTERNATIONAL TRADE
2005



Technical Information - CECC & ESA/ESCC Approved Products

Approval of the manufacturing facility

The facility is approved to manufacture non-solid electrolytic tantalum capacitors under BS 9000, IECQ, CECC and MIL-STD-790 for MIL-PRF-39006/-. The facility is registered on the Defence Contracts List as satisfying the requirements of DEF STAN 05-21.

Specifications

The TH capacitor can be offered to the following specifications covering both the European range of values and the American range: BS CECC 30 202 001, 30 202 005, 30202.012, QC 300 202 GB 0001. Arcotronics In-House Specification 1000 SD 00007. The TH series is GAM T1 listed in France.

Performance Curves & Technical Data

Publication 5008 lists the technical data for the TH range and includes: Constructional details/performance curves: the variation of electrical parameters with temperature and frequency/In-rush currents/long term storage/parameter variation on endurance.

- All-Tantalum electrodes
- Withstands high ripple current
- Long life reliability
- Reverse voltage capability
- Approved to BS CECC 30 202 001
- Approved to ESA/ESCC 3003/005
- Approved to BS CECC 30 202 005
- Approved to QC 300 202 GB 0001

Severity of Tests

The BS CECC 30 202 001 test sequence includes tests at the following severities.

Environmental Classification	: 55/125/56
Sealing (Tracer Gas)	: 1 x 10 ⁻⁸ mbar din ³ /s
Rapid change of temperature	: 30 cycles and 500 cycles
Vibration	: 20g. (150mm or 196m/s ² for 30 hours)
Bump	: 4000 bumps at 390 m/s ²
Low Air Pressure	: 2 KN/m ² (20mbar)
Endurances 85°C and 125°C	: 2000 & 10000 hours
Reverse voltage	: 3 volts for 125 hours

Usage at Higher Temperatures

Temperatures in excess of the upper category temperature of 125°C, to a maximum of 200°C, can be sustained with appropriate derating. The 200°C range is illustrated on pages 17 to 22.

Table 1- Ripple Current Ratings: Multiplying Factors

Frequency of applied ripple current	120Hz				800Hz				1kHz				10kHz				40kHz				100kHz								
	Temp °C				Temp °C				Temp °C				Temp °C				Temp °C				Temp °C								
Ambient still air	≤				≤				≤				≤				≤				≤				≤				
	55°	85°	105°	125°	55°	85°	105°	125°	55°	85°	105°	125°	55°	85°	105°	125°	55°	85°	105°	125°	55°	85°	105°	125°	55°	85°	105°	125°	
% of 85°C rated peak voltage	100%	.60	.39	-	-	.71	.43	-	-	.72	.45	-	-	.88	.55	-	-	1.0	.63	-	-	1.1	.69	-	-	1.1	.85	-	-
	90%	.60	.46	-	-	.71	.55	-	-	.72	.55	-	-	.88	.67	-	-	1.0	.77	-	-	1.1	.85	-	-	1.1	.85	-	-
	80%	.60	.52	.35	-	.71	.62	.42	-	.72	.62	.42	-	.88	.76	.52	-	1.0	.87	.59	-	1.1	.96	.65	-	1.1	.96	.65	-
	70%	.60	.58	.44	-	.71	.69	.52	-	.72	.70	.52	-	.88	.85	.64	-	1.0	.97	.73	-	1.1	1.07	.80	-	1.1	1.07	.80	-
	≤ 66 2/3%√	.60	.60	.46	.27	.71	.71	.55	.32	.72	.72	.55	.32	.88	.88	.68	.40	1.0	1.0	.77	.45	1.1	1.1	.85	.50	1.1	1.1	.85	.50

Basic Criteria

Ripple current rating is expressed in amps. r.m.s. for a particular frequency, temperature and applied voltage.

Maximum temperature rise above ambient is 50°C up to 85°C ambient, with linear derating above 85°C to a maximum temperature rise of 10°C at 125°C ambient.

Cooling conditions will affect the capability of the capacitor to handle ripple current.

The sum of the peak a.c. and d.c. voltages must not exceed the rated forward or reverse voltage at the appropriate temperature.

The maximum RMS ripple current which can be applied is shown on pages 4 to 6 for each value of capacitance and voltage rating. This is shown at a frequency of 40 kHz and a temperature of 85°C. Multiplying factors for other frequencies, temperatures and allowing for variation in applied peak voltage are shown in Table 1 above.

The ripple current causes heating due to I²R losses, where R is the ESR of the capacitor. Based on an assumption that the maximum temperature rise is 50°C in still air and allowing for the upper temperature rating of the capacitor, multiplying factors are derived at different temperatures.

As the ESR is frequency dependent there are also multiplying factors for frequencies.

Selection Chart - CECC Range

Rated Voltage @ 85°C	6	6.3	8	10	15	16	25	30	40	50	60	63	75	100	125
Category Voltage @ 125°C	4	4	5	7	10	10	16	20	25	30	40	40	50	65	85
Rated Capacitance µF	Case Size														
2.7															T1
3.3															T1
3.5													T1		
3.6															T1
3.9															T1
4.0											T1				
4.7														T1	
5.0										T1					
5.6															T1
6.8															T1
8.0								T1							
8.2											T1			T1	
9.0														T1	
10										T1					
12														T1	
14															T2
15					T1				T1	T1				T1	T2
18															T2
20															T2
22															T2
25															T3
27															
30															T2/T3
33															T2/T3
39															T2/T3
40															T3
43															T2
47															T3
50															T2
56															T3
60															T2
68															T2/T3
70															T3/T4
82															T4
86															T4
100															T3
110															T4
120															T4
140															T3
150															T4
160															T3/T4
170															T4
180															T3
220															T4
250															T3
270															T4
290															T4
300															T3
330															T4
350															T4
390															T3
430															T4
470															T3
540															T4
560															T3
680															T4
750															T3
820															T4
850															T3
1000															T4
1200															T3
1500															T4
1800															T3
2200															T4

Characteristics & Capabilities: TH range

Reverse voltage capability

The TH-series employs tantalum cathodes which allow the continuous application of reverse potentials not exceeding 3V over the whole temperature range.

Surge voltage

The surge voltage capability is 115% of the voltage rating at the relevant temperature.

Temperature range

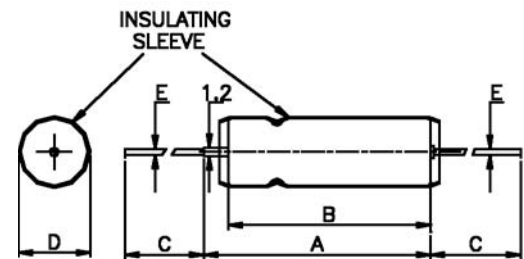
The capacitor is designed for operation between -55°C and +125°C, with linear voltage derating above 85°C to 66% of the rated voltage at +125°C.

Capacitance tolerance

The standard capacitance tolerance is ±20% and ±10% although special tolerances are available by arrangement.

TH

Fig. 1. Case Sizes - Outline and Dimensions



Note: 1.2dia Anode Lead Stub must not be bent

Table 1 - Dimensions (mm)

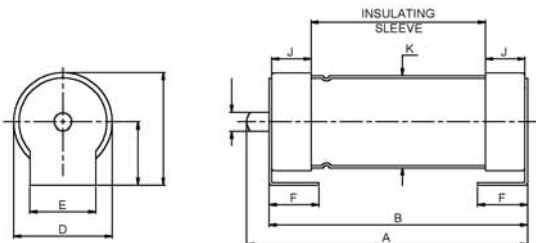
Case Size	A max	B max	C max	D max	E ±0.1
1	16	13	30	5.6	0.65
2	21	18	30	7.8	0.65
3	24	21	30	10.2	0.65
4	31	28	30	10.2	0.65

Weight

Case Size	Approximate Weight
1	2.5g
2	5.5g
3	10.5g
4	14.5g

SMTH

Fig. 2. Case Sizes - Outline and Dimensions



Surface mount foot material - 0.25mm Nickel

Table 2 - Dimensions (mm)

Case Size	A max	B min	B max	C ±0.4	D ±0.1	E ±0.1	F min	F max	G ±0.1	H ±0.4	J max	K max
1	17.8	14.0	15.0	7.8	6.25	3.8	2.7	3.8	1.8	4.6	3.8	5.6
2	22.6	18.4	19.4	9.8	8.30	6.1	2.7	3.8	1.8	5.7	4.2	7.8
3	25.8	22.4	23.4	12.4	10.8	8.4	2.7	3.8	1.8	7.0	4.7	10.3
4	33.3	29.2	30.2	12.4	10.8	8.4	2.7	3.8	1.8	7.0	4.7	10.3

Weight

Case Size	Approximate Weight
1	2.5g
2	5.6g
3	11.6g
4	15.0g

Capacitance µF	Rated Volts 85°C	Category Volts 125°C	Case Size	Max. ESR 25°C 100Hz	Impedance			Leakage Current		Max. Capacitance Change		Max. RMS Ripple 85°C 40kHz (mA) (Note A)	TH	
					-55°C 100kHz	25°C 100kHz	-55°C 100kHz	25°C µA	85 + 125°C µA	-55°C %	-125°C %		Part No. Cap. Tol. ±10% 402/1/-	Part No. Cap. Tol. ±20% 402/1/-
68	6.3	4	T1	2.9	60	5	25	.75	1.5	-40	16	960	57611/117	57611/017
120	6.3	4	T1	4.0	81	5	25	1.5	3	-41	16	820	57611/120	57611/020
150	6.3	4	T1	4.0	80	5	25	1.5	3	-42	16	820	57611/121	57611/021
220	6.3	4	T2	1.8	30	1	10	1.0	5	-44	18	1370	57621/123	57621/023
470	6.3	4	T2	2.3	46	1	10	2.0	5	-60	20	1281	57621/127	57621/027
560	6.3	4	T2	2.4	48	1	10	2.0	10	-68	20	1255	57621/128	57621/028
560	6.3	4	T3	1.3	25	1	10	2.0	6	-64	20	1900	57631/128	57631/028
1000	6.3	4	T4	0.9	22	1	10	3.0	14	-80	25	2388	57641/131	57641/031
1500	6.3	4	T3	1.8	36	1	10	3.0	15	-84	25	1615	57631/133	57631/033
2200	6.3	4	T4	1.0	22	1	10	4.0	15	-86	25	2265	57641/135	57641/035
47	10	6.3	T1	3.7	90	5	25	.75	1.5	-36	14	855	57612/115	57612/015
68	10	6.3	T1	4.0	85	5	25	1.0	2	-40	16	820	57612/117	57612/017
82	10	6.3	T1	4.0	84	5	25	1.5	3	-40	16	820	57612/118	57612/018
100	10	6.3	T1	4.0	82	5	25	1.5	3	-40	16	820	57612/119	57612/019
150	10	6.3	T2	2.3	45	1	10	1.0	2	-32	16	1271	57622/121	57622/021
180	10	6.3	T2	2.2	40	1	10	1.0	2	-35	16	1300	57622/122	57622/022
330	10	6.3	T2	2.6	52	1	10	2.0	5	-54	18	1195	57622/125	57622/025
390	10	6.3	T2	2.6	54	1	10	2.0	5	-60	20	1195	57622/126	57622/026
470	10	6.3	T3	1.5	25	1	10	2.0	12	-65	20	1800	57632/127	57632/027
680	10	6.3	T4	0.9	23	1	10	3.0	15	-80	25	2487	57642/129	57642/029
820	10	6.3	T4	1.0	22	1	10	3.0	15	-80	25	2360	57642/130	57642/030
1000	10	6.3	T3	1.8	36	1	10	3.0	15	-80	25	1720	57632/131	57632/031
1200	10	6.3	T3	1.8	36	1	10	3.0	15	-80	25	1720	57632/132	57632/032
1500	10	6.3	T4	1.0	23	1	10	4.0	15	-84	25	2360	57642/133	57642/033
1800	10	6.3	T4	1.0	24	1	10	4.0	15	-84	25	2360	57642/134	57642/034
33	16	10	T1	4.0	90	5	25	.75	1.5	-28	16	820	57613/113	57613/013
47	16	10	T1	4.7	100	5	25	1.0	2	-28	16	760	57613/115	57613/015
56	16	10	T1	4.7	100	5	25	1.0	2	-28	16	760	57613/116	57613/016
120	16	10	T2	2.6	50	1	10	1.0	2	-28	16	1230	57623/120	57623/020
220	16	10	T2	2.8	62	1	10	2.0	5	-35	16	1215	57623/123	57623/023
270	16	10	T2	2.2	60	1	10	2.0	5	-45	18	1215	57623/124	57623/024
330	16	10	T3	1.7	30	1	10	2.0	12	-58	20	1760	57633/125	57633/025
470	16	10	T4	1.2	24	1	10	3.0	15	-75	25	2100	57643/127	57643/027
560	16	10	T4	1.0	23	1	10	3.0	15	-80	25	2300	57643/128	57643/028
680	16	10	T3	2.1	42	1	10	3.0	12	-80	25	1582	57633/129	57633/029
820	16	10	T3	2.1	42	1	10	3.0	16	-80	25	1582	57633/130	57633/030
1000	16	10	T4	1.0	25	1	10	4.0	15	-82	25	2300	57643/131	57643/031
1200	16	10	T4	1.0	25	1	10	4.0	15	-84	25	2300	57643/132	57643/032
22	25	16	T1	4.2	140	5	25	.75	1.5	-20	12	800	57614/111	57614/011
27	25	16	T1	5.3	140	5	25	1.5	3	-20	12	715	57614/112	57614/012
33	25	16	T1	5.3	130	5	25	1.5	3	-24	14	715	57614/113	57614/013
39	25	16	T1	5.3	120	5	25	1.5	3	-28	16	715	57614/114	57614/014
100	25	16	T2	2.8	50	5	25	1.0	2	-28	15	1215	57624/119	57624/019
150	25	16	T2	3.0	62	1	10	2.0	5	-35	15	1130	57624/121	57624/021
180	25	16	T2	3.0	60	1	10	2.0	5	-35	15	1130	57624/122	57624/022
220	25	16	T3	1.8	33	1	10	2.0	12	-52	20	1614	57634/123	57634/023
330	25	16	T4	1.3	27	1	10	3.0	12	-60	25	1862	57644/125	57644/025
390	25	16	T3	2.4	48	1	10	3.0	12	-70	22	1398	57634/126	57634/026
390	25	16	T4	1.1	24	1	10	3.0	15	-68	25	2025	57644/126	57644/026
470	25	16	T3	2.4	48	1	10	3.0	12	-76	22	1398	57634/127	57634/027
560	25	16	T3	2.4	48	1	10	3.0	15	-80	25	1398	57634/128	57634/028
680	25	16	T4	1.2	24	1	10	4.0	15	-80	25	1939	57644/129	57644/029
820	25	16	T4	1.3	26	1	10	4.0	15	-80	25	1862	57644/130	57644/030
15	40	25	T1	6.2	175	5	25	1.0	2	-20	12	660	57615/109	57615/009
18	40	25	T1	8.0	200	5	25	1.5	4	-20	12	580	57615/110	57615/010
22	40	25	T1	8.0	190	5	25	1.5	4	-24	12	580	57615/111	57615/011
68	40	25	T2	2.8	60	5	25	1.0	7	-24	15	1285	57625/117	57625/017
100	40	25	T2	2.8	60	5	25	2.0	7	-40	15	1285	57625/119	57625/019
120	40	25	T2	3.0	62	1	10	2.0	7	-32	15	1241	57625/120	57625/020
150	40	25	T3	1.6	35	1	10	2.0	12	-48	15	1525	57635/121	57635/021
220	40	25	T4	1.5	27	1	10	3.0	20	-58	23	1900	57645/123	57645/023
270	40	25	T3	2.6	52	1	10	3.0	14	-60	25	1373	57635/124	57635/024
330	40	25	T3	2.6	52	1	10	3.0	18	-65	25	1373	57635/125	57635/025
390	40	25	T4	1.5	30	1	10	4.0	20	-75	25	1900	57645/126	57645/026
470	40	25	T4	1.5	30	1	10	4.0	20	-80	25	1900	57645/127	57645/027
10	63	40	T1	8.2	250	5	25	1.0	2	-20	9	572	57616/107	57616/007
12	63	40	T1	8.2	233	5	25	1.5	4	-20	9	572	57616/108	57616/008
15	63	40	T1	8.5	220	5	25	1.5	4	-22	9	562	57616/109	57616/009
47	63	40	T2	2.8	70	5	25	1.0	7	-24	15	1150	57626/115	57626/015
56	63	40	T2	3.0	72	5	25	2.0	7	-26	15	1150	57626/116	57626/016
82	63	40	T2	3.2	70	5	25	2.0	7	-36	15	1150	57626/118	57626/018
100	63	40	T3	2.3	42	5	25	2.0	11	-37	15	1420	57636/119	57636/019
120	63	40	T3	2.3	49	1	10	3.0	14	-40	18	1420	57636/120	57636/020
150	63	40	T4	1.4	27	1	10	3.0	20	-45	20	1865	57646/121	57646/021
220	63	40	T3	2.6	55	1	10	3.0	15	-50	25	1341	57636/123	57636/023
270	63	40	T4	1.5	33	1	10	5.0	22	-70	25	1850	57646/124	57646/024
330	63	40	T4	1.5	31	1	10	5.0	25	-72	25	1850	57646/125	57646/025
6.8	75	50	T1	6.8	300	5	25	1.0	2	-20	9	610	57617/105	57617/005
8.2	75	50	T1	6.8	280	5	25	2.0	5	-20	9	610	57617/106	57617/006
33	75	50	T2	3.6	90	5	25	1.0	4	-24	12	1079	57627/113	57627/013

European Range

All items BS CECC 30 202 001 Approved

Capacitance µF	Rated Volts 85°C	Category Volts 125°C	Case Size	Max. ESR 25°C 100Hz	Impedance			Leakage Current		Max. Capacitance Change		Max. RMS Ripple 85°C 40kHz (mA) (Note A)	TH	
					-55°C 100Hz	25°C 100kHz	-55°C 100kHz	25°C µA	85 + 125°C µA	-55°C %	-125°C %		Part No. Cap. Tol. ±10% 402/1/-	Part No. Cap. Tol. ±20% 402/1/-
47	75	50	T2	3.8	87	5	25	2.0	10	-30	14	1051	57627/115	57627/015
68	75	50	T2	3.8	86	5	25	2.0	10	-36	15	1051	57627/117	57627/017
68	75	50	T3	2.0	50	5	25	2.0	20	-30	15	1522	57637/117	57637/017
82	75	50	T3	2.0	45	5	25	2.0	10	-32	15	1335	57637/118	57637/018
100	75	50	T3	2.6	60	5	25	3.0	16	-36	18	1335	57637/119	57637/019
120	75	50	T4	1.4	28	1	10	3.0	22	-36	20	1914	57647/120	57647/020
150	75	50	T3	2.6	60	1	10	3.0	16	-40	20	1335	57637/121	57637/021
150	75	50	T4	1.4	30	1	10	4.0	22	-48	22	1914	57647/121	57647/021
180	75	50	T3	2.6	60	1	10	3.0	20	-50	22	1335	57637/122	57637/022
220	75	50	T4	1.5	32	1	10	5.0	22	-60	22	1850	57647/123	57647/023

4.7	100	63	T1	8.5	500	5	25	1.0	2	-16	8	565	57618/103	57618/003
5.6	100	63	T1	9.6	475	5	25	2.0	5	-17	8	530	57618/104	57618/004
22	100	63	T2	3.7	100	5	25	1.0	4	-16	8	1065	57628/111	57628/011
33	100	63	T2	3.7	95	5	25	2.0	12	-16	8	1065	57628/113	57628/013
33	100	63	T3	3.3	93	5	25	2.0	8	-16	8	1200	57638/113	57638/013
39	100	63	T2	3.8	92	5	25	2.0	12	-24	12	1065	57628/114	57628/014
39	100	63	T3	2.4	89	5	25	3.0	16	-20	12	1389	57638/114	57638/014
47	100	63	T3	2.4	68	5	25	2.0	10	-22	12	1389	57638/115	57638/015
56	100	63	T3	2.6	60	5	25	2.0	10	-28	15	1335	57638/116	57638/016
68	100	63	T3	2.6	60	5	25	3.0	24	-30	15	1335	57638/117	57638/017
68	100	63	T4	1.5	42	1	10	3.0	24	-30	20	1850	57648/117	57648/017
82	100	63	T4	1.5	39	1	10	3.0	24	-25	20	1859	57648/118	57648/018
100	100	63	T4	1.5	36	1	10	3.0	24	-35	20	1859	57648/119	57648/019

2.7	125	85	T1	13.3	780	5	25	1.0	2	-16	8	452	57619/199	57619/099
3.3	125	85	T1	11.1	600	5	25	1.0	2	-16	8	495	57619/101	57619/001
3.9	125	85	T1	11.1	557	5	25	2.0	5	-16	8	495	57619/102	57619/002
15	125	85	T2	5.0	167	5	25	1.0	7	-16	8	1050	57629/109	57629/009
18	125	85	T2	3.7	133	5	25	2.0	10	-16	8	1065	57629/110	57629/010
39	125	85	T3	2.8	90	5	25	2.0	10	-16	8	1282	57639/114	57639/014
47	125	85	T3	2.8	70	5	25	2.0	10	-23	10	1282	57639/115	57639/015
68	125	85	T4	1.5	42	1	10	3.0	26	-24	15	1859	57649/117	57649/017
82	125	85	T4	1.5	39	1	10	3.0	24	-24	18	1859	57649/118	57649/018

Note A. Quoted ripple current figures must be used in conjunction with the multiplying factors shown in Table 1. Note B. Certain of these values have been allocated NATO Stock Numbers. See publication 5007/A. For SMTH selection, replace the first '5' of the above Part No's with a '7'

American Range

All items BS CECC 30 202 001 Approved

Capacitance µF	Rated Volts 85°C	Category Volts 125°C	Case Size	Max. ESR 25°C 100Hz	Impedance			Leakage Current		Max. Capacitance Change		Max. RMS Ripple 85°C 40kHz (mA) (Note A)	TH	
					-55°C 100Hz	25°C 100kHz	-55°C 100kHz	25°C µA	85 + 125°C µA	-55°C %	-125°C %		Part No. Cap. Tol. ±10% 402/1/-	Part No. Cap. Tol. ±20% 402/1/-
30	6	4	T1	4.0	100	5	25	.75	1.5	-40	12	820	58101/120	58101/020
68	6	4	T1	2.9	60	5	25	.75	1.5	-40	16	960	58101/129	58101/029
140	6	4	T2	2.2	40	1	10	1.0	3	-40	16	1200	58201/136	58201/036
160	6	4	T1	4.0	80	5	25	1.5	3	-42	16	820	58101/138	58101/038
270	6	4	T2	2.0	25	1	10	1.0	2	-44	20	1375	58201/143	58201/043
330	6	4	T3	1.4	20	1	10	2.0	6	-44	16	1800	58301/146	58301/046
560	6	4	T2	2.4	48	1	10	2.0	10	-68	20	1255	58201/151	58201/051
560	6	4	T3	1.3	25	1	10	2.0	6	-64	20	1900	58301/151	58301/051
1200	6	4	T4	0.9	20	1	10	3.0	12	-80	25	2388	58401/154	58401/054
1500	6	4	T3	1.8	36	1	10	3.0	15	-84	25	1615	58301/155	58301/055
2200	6	4	T4	1.0	22	1	10	4.0	15	-86	25	2265	58401/157	58401/057

25	8	5	T1	4.0	100	5	25	.75	1.5	-40	12	820	58102/119	58102/019
56	8	5	T1	3.3	59	5	25	.75	1.5	-40	16	900	58102/127	58102/027
120	8	5	T1	4.0	80	5	25	1.0	2	-44	20	820	58102/135	58102/035
120	8	5	T2	2.6	50	1	10	1.0	2	-44	20	1230	58202/135	58202/035
220	8	5	T2	2.4	30	1	10	1.0	2	-44	18	1300	58202/141	58202/041
290	8	5	T3	1.8	25	1	10	2.0	6	-64	20	1745	58302/144	58302/044
430	8	5	T2	2.6	54	1	10	2.0	10	-64	20	1230	58202/149	58202/049
430	8	5	T3	1.4	25	1	10	2.0	6	-64	20	1825	58302/149	58302/049
850	8	5	T4	1.0	22	1	10	3.0	12	-80	25	2456	58402/153	58402/053

20	10	7	T1	4.0	175	5	25	.75	1.5	-32	12	820	58103/117	58103/017
100	10	7	T2	2.4	60	5	25	1.0	2	-35	16	1200	58203/133	58203/033
250	10	7	T3	1.8	30	1	10	2.0	6	-40	16	1720	58303/142	58303/042
300	10	7	T2	2.6	52	1	10	2.0	5	-54	18	1195	58203/145	58203/045
350	10	7	T2	2.6	52	1	10	2.0	5	-60	18	1195	58203/147	58203/047
390	10	7	T3	1.5	25	1	10	2.0	6	-64	20	1800	58303/148	58303/048
750	10	7	T4	0.9	22	1	10	3.0	12	-80	25	2487	58403/152	58403/052
850	10	7	T3	1.8	36	1	10	3.0	12	-84	25	1720	58303/153	58303/053

15	15	10	T1	4.4	155	5	25	.75	1.5	-24	12	780	58104/115	58104/015
33	15	10	T1	4.0	90	5	25	.75	1.5	-28	16	820	58104/121	58104/021
47	15	10	T1	4.7	100	5	25	1.0	2	-28	16	760	58104/125	58104/025
56	15	10	T1	4.7	100	5	25	1.0	2	-28	16	760	58104/127	58104/027
70	15	10	T2	2.8	75	5	25	1.0	2	-28	16	1150	58204/130	58204/030
120	15	10	T2	2.6	50	1	10	1.0	2	-28	16	1230	58204/135	58204/035
170	15	10	T3	2.4	35	1	10	2.0	6	-32	16	1480	58304/139	58304/039
220	15	10	T2	2.8	62	1	10	2.0	5	-35	16	1215	58204/141	58204/041
270	15	10	T2	2.8	60	1	10	2.0	5	-45	18	1215	58204/143	58204/043

Capacitance µF	Rated Volts 85°C	Category Volts 125°C	Case Size	Max. ESR 25°C 100Hz	Impedance			Leakage Current		Max. Capacitance Change		Max. RMS Ripple 85°C 40kHz (mA) (Note A)	TH	
					-55°C 100Hz	25°C 100kHz	-55°C 100kHz	25°C µA	85 + 125°C µA	-55°C %	-125°C %		Part No. Cap. Tol. ±10% 402/1/-	Part No. Cap. Tol. ±20% 402/1/-
270	15	10	T3	2.2	30	1	10	2.0	6	-56	20	1709	58304/143	58304/043
290	15	10	T2	2.8	65	1	10	2.0	5	-54	18	1215	58204/144	58204/044
540	15	10	T4	1.0	23	1	10	3.0	12	-80	25	2300	58404/150	58404/050
750	15	10	T3	2.1	42	1	10	3.0	15	-80	25	1582	58304/152	58304/052
850	15	10	T4	1.0	24	1	10	4.0	15	-80	25	2300	58404/153	58404/053
1200	15	10	T4	1.0	25	1	10	4.0	15	-84	25	2300	58404/154	58404/054
10	25	15	T1	5.3	220	5	25	.75	1.5	-16	9	715	58105/112	58105/012
43	25	15	T1	5.3	120	5	25	1.5	3	-28	16	715	58105/124	58105/024
50	25	15	T2	3.0	70	5	25	1.0	2	-28	15	1130	58205/126	58205/026
120	25	15	T3	2.6	38	1	10	2.0	6	-32	15	1420	58305/135	58305/035
160	25	15	T2	3.0	60	1	10	2.0	5	-35	15	1130	58205/138	58205/038
180	25	15	T3	2.0	32	1	10	2.0	6	-48	15	1531	58305/140	58305/040
350	25	15	T4	1.0	24	1	10	3.0	12	-64	25	2246	58405/147	58405/047
850	25	15	T4	1.3	26	1	10	4.0	15	-80	25	1970	58405/153	58405/053
8	30	20	T1	6.6	275	5	25	.75	1.5	-16	12	640	58106/109	58106/009
15	30	20	T1	6.2	175	5	25	.75	1.5	-20	12	660	58106/124	58106/015
25	30	20	T1	6.6	160	5	25	1.5	3	-24	12	640	58106/119	58106/019
33	30	20	T1	6.6	160	5	25	1.5	3	-26	12	640	58106/121	58106/021
40	30	20	T2	3.7	65	5	25	1.0	2	-24	12	1065	58206/123	58206/023
68	30	20	T2	2.8	60	5	25	1.0	2	-24	15	1215	58206/129	58206/029
100	30	20	T3	2.6	40	5	25	2.0	6	-28	12	1477	58306/133	58306/033
120	30	20	T2	3.0	60	1	10	2.0	5	-32	15	1185	58206/134	58206/034
150	30	20	T2	3.0	60	1	10	2.0	6	-35	15	1185	58206/137	58206/037
150	30	20	T3	2.3	35	1	10	2.0	6	-48	15	1525	58306/137	58306/037
170	30	20	T2	3.0	65	1	10	2.0	7	-48	15	1185	58206/139	58206/039
300	30	20	T3	2.2	44	1	10	3.0	12	-60	15	1559	58306/145	58306/045
300	30	20	T4	1.2	31	1	10	3.0	12	-60	25	2100	58406/145	58406/045
330	30	20	T3	2.6	52	1	10	3.0	12	-65	25	1373	58306/146	58306/046
350	30	20	T3	2.6	52	1	10	3.0	15	-70	25	1477	58306/147	58306/047
390	30	20	T3	2.6	52	1	10	3.0	15	-75	25	1477	58306/148	58306/048
430	30	20	T3	2.6	54	1	10	3.0	15	-80	25	1477	58306/149	58306/049
560	30	20	T4	1.4	30	1	10	4.0	20	-80	25	1950	58406/151	58406/051
5	50	30	T1	8.0	400	5	25	.75	2	-16	6	580	58107/107	58107/007
10	50	30	T1	6.4	250	5	25	.75	2	-20	9	640	58107/112	58107/012
18	50	30	T1	8.0	200	5	25	1.5	3	-24	12	580	58107/116	58107/016
22	50	30	T1	8.0	190	5	25	1.5	4	-24	12	580	58107/118	58107/018
25	50	30	T2	4.6	95	5	25	1.0	3	-20	12	1065	58207/119	58207/019
47	50	30	T2	3.7	70	5	25	1.0	3	-24	15	1215	58207/125	58207/025
60	50	30	T3	2.9	45	5	25	2.0	7	-16	12	1285	58307/128	58307/028
82	50	30	T3	2.3	45	5	25	2.0	7	-32	15	1460	58307/131	58307/031
100	50	30	T2	3.2	67	5	25	2.0	7	-40	15	1150	58207/133	58207/033
160	50	30	T4	1.3	27	1	10	3.0	16	-50	23	2040	58407/138	58407/038
270	50	30	T3	2.6	52	1	10	3.0	15	-60	25	1373	58307/143	58307/043
350	50	30	T4	1.5	30	1	10	4.0	20	-70	25	1900	58407/147	58407/047
390	50	30	T4	1.5	30	1	10	5.0	25	-75	25	1900	58407/148	58407/048
430	50	30	T4	1.5	31	1	10	5.0	25	-80	25	1900	58407/149	58407/049
4	60	40	T1	9.3	550	5	25	.75	2	-16	6	525	58108/105	58108/005
8.2	60	40	T1	6.6	275	5	25	.75	2	-20	9	625	58108/110	58108/010
20	60	40	T2	4.0	105	5	25	1.0	4	-16	12	1026	58208/117	58208/017
39	60	40	T2	3.0	90	5	25	1.0	4	-24	12	1185	58208/122	58208/022
50	60	40	T3	2.6	50	5	25	2.0	7	-16	12	1341	58308/126	58308/026
68	60	40	T3	2.4	50	5	25	2.0	7	-30	15	1393	58308/129	58308/029
82	60	40	T2	3.2	70	5	25	2.0	7	-36	15	1150	58208/131	58208/031
140	60	40	T4	1.3	28	1	10	3.0	16	-40	20	1990	58408/136	58408/036
220	60	40	T3	2.6	55	1	10	3.0	15	-50	25	1341	58308/141	58308/041
270	60	40	T4	1.5	33	1	10	5.0	22	-70	25	1850	58408/143	58408/043
330	60	40	T4	1.5	31	1	10	5.0	25	-72	25	1850	58408/146	58408/046
3.5	75	50	T1	9.5	650	5	25	1.0	2	-16	6	525	58109/103	58109/003
9	75	50	T1	8.2	280	5	25	2.0	5	-20	9	572	58109/111	58109/011
15	75	50	T2	5.0	150	5	25	1.0	4	-16	9	1000	58209/115	58209/015
40	75	50	T3	3.0	60	5	25	2.0	8	-16	12	1293	58309/123	58309/023
43	75	50	T2	3.8	89	5	25	2.0	8	-24	12	1051	58209/124	58209/024
56	75	50	T2	3.8	84	5	25	2.0	10	-30	15	1051	58209/127	58209/027
56	75	50	T3	2.4	60	5	25	2.0	8	-28	15	1396	58309/127	58309/027
110	75	50	T4	1.3	29	1	10	3.0	20	-35	20	1990	58409/134	58409/034
250	75	50	T4	1.5	33	1	10	5.0	22	-68	25	1850	58409/142	58409/042
30	100	65	T2	3.7	99	5	25	2.0	12	-16	8	1065	58210/120	58210/020
30	100	65	T3	3.3	80	5	25	2.0	8	-16	8	1200	58310/120	58310/020
43	100	65	T3	2.4	70	5	25	2.0	8	-20	8	1389	58310/124	58310/024
86	100	65	T4	1.5	30	1	10	3.0	20	-24	15	1859	58410/132	58410/032
3.6	125	85	T1	11.1	600	5	25	1.0	2	-16	8	495	58111/104	58111/004
14	125	85	T2	5.0	167	5	25	1.0	4	-16	8	1050	58211/114	58211/014
25	125	85	T3	2.6	93	5	25	2.0	8	-16	8	1335	58311/119	58311/019
56	125	85	T4	1.5	47	1	10	3.0	20	-25	15	1859	58411/127	58411/027

Note A. Quoted ripple current figures must be used in conjunction with the multiplying factors shown in Table 1. For SMTH selection, replace the first '5' of the above Part No's with a '7'

Ordering procedure
 Example: TH Case Size T4
 56µ F ± 10% 125V
 Arcotronics Part Number 402/1/58411/127.
 Specification (if required)

MIL-PRF-39006 (CLR 79/81/90/91) Range

U.S. Military/Established Reliability, MIL-PRF-39006 Qualified Styles CLR 79, 81, 90, 91

In accordance with the U.S. Military Specification MIL-PRF-39006 all capacitors are market with the Part Number M39006/xx - xxx

Style CLR79, M39006/22

Style CLR81, M39006/25

Style CLR90, M39006/30

Style CLR91, M39006/31

For information on the performance characteristics of these products please refer to the latest issue of Specification MIL-PRF-39006.

When ordering these capacitors care must be taken to ensure the correct failure rate suffix is specified i.e. 'M', 'P' or 'R' listed code numbers.

MIL-PRF-39006 Part Number Scheme

Cage Code: U2391

Example

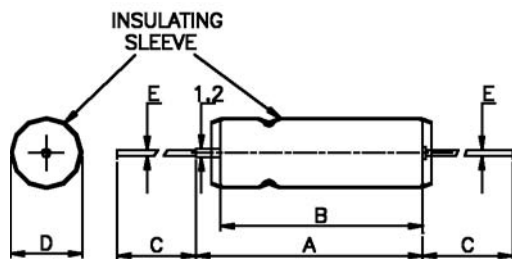
M39006	/	22	-	0001
BASIC DOCUMENT NUMBER		DETAIL SPECIFICATION NUMBER		DASH NUMBER
Indicates the Basic Specification: Namely MIL-PRF-39006		Indicates the detail Specification of the U.S. Military Specification		Taken from table on following page

Table 2

CLR79, CLR81 RIPPLE CURRENT MULTIPLIERS vs FREQUENCY, TEMPERATURE AND APPLIED PEAK VOLTAGE

FREQUENCY OF APPLIED RIPPLE CURRENT		120Hz				800 Hz				1kHz				10kHz				40kHz				100kHz			
AMBIENT STILL AIR		TEMP°C				TEMP°C				TEMP°C				TEMP°C				TEMP°C							
		55°	85°	105°	125°	55°	85°	105°	125°	55°	85°	105°	125°	55°	85°	105°	125°	55°	85°	105°	125°	55°	85°	105°	125°
% of APPLIED VOLTAGE	100%	.60	.39	-	-	.71	.43	-	-	.72	.46	-	-	.88	.55	-	-	1.0	.63	-	-	1.1	.69	-	-
	90%	.60	.46	-	-	.71	.55	-	-	.72	.55	-	-	.88	.67	-	-	1.0	.87	-	-	1.1	.85	-	-
	80%	.60	.52	.35	-	.71	.62	.42	-	.72	.62	.42	-	.88	.76	.52	-	1.0	.87	.59	-	1.1	.96	.65	-
	70%	.60	.58	.44	-	.71	.69	.52	-	.72	.70	.52	-	.88	.85	.64	-	1.0	.97	.73	-	1.1	1.07	.80	-
	66 2/3%	.60	.60	.46	.27	.71	.71	.55	.32	.72	.72	.55	.32	.88	.88	.68	.40	1.0	1.0	.77	.45	1.1	1.1	.85	.50

Fig. 3. Case Sizes - Outline and Dimensions



Note: 1.2dia Anode Lead Stub must not be bent

Dimensions (mm)

Case Size	A max	B max	C max	D max	E ±0.1
1	16	13	38.10	5.6	0.65
2	21	18	57.15	7.8	0.65
3	24	21	57.15	10.2	0.65
4	31	28	57.15	10.2	0.65

Weight

Case Size	Approximate Weight
1	2.5g
2	5.5g
3	10.5g
4	14.5g

MIL-PRF-39006 (CLR79) Range

Capacitance µF	Cap Tol %	Rated Voltage 85°C	Category Voltage 125°C	Case Size	Max. D.C. Leakage µA + 25°C	Max. D.F. % @ 25°C 120 Hz	Max. ESR Ohms at +25°C 120 Hz	Max. Ripple Current mA rms at 85°C 40 kHz	M39006/22 - xxx* Failure Rate level % / 1000Hrs			Arcotronics Part Number 4021/-
									M (1.0)	P (0.1)	R (0.01)	
30	20%	6	4	T1	1	9	3.98	820	0001	0221	0441	58101/020
30	10%	6	4	T1	1	9	3.98	820	0002	0222	0442	58101/120
30	5%	6	4	T1	1	9	3.98	820	0003	0223	0443	58101/520
68	20%	6	4	T1	1	15	3.16	960	0004	0224	0444	58101/029
68	10%	6	4	T1	1	15	3.16	960	0005	0225	0445	58101/129
68	5%	6	4	T1	1	15	3.16	960	0006	0226	0446	58101/529
140	20%	6	4	T2	1	21	1.99	1200	0007	0227	0447	58201/036
140	10%	6	4	T2	1	21	1.99	1200	0008	0228	0448	58201/136
140	5%	6	4	T2	1	21	1.99	1200	0009	0229	0449	58201/536
270	20%	6	4	T2	1	45	2.21	1375	0010	0230	0450	58301/043
270	10%	6	4	T2	1	45	2.21	1375	0011	0231	0451	58301/143
270	5%	6	4	T2	1	45	2.21	1375	0012	0232	0452	58301/543
330	20%	6	4	T3	2	36	1.45	1800	0013	0233	0453	58301/046
330	10%	6	4	T3	2	36	1.45	1800	0014	0234	0454	58301/146
330	5%	6	4	T3	2	36	1.45	1800	0015	0235	0455	58301/546
560	20%	6	4	T3	2	55	1.30	1900	0016	0236	0456	58301/051
560	10%	6	4	T3	2	55	1.30	1900	0017	0237	0457	58301/151
560	5%	6	4	T3	2	55	1.30	1900	0018	0238	0458	58301/551
1200	20%	6	4	T4	3	90	1.00	2265	0019	0239	0459	58401/054
1200	10%	6	4	T4	3	90	1.00	2265	0020	0240	0460	58401/154
25	20%	8	5	T1	1	7.5	3.98	820	0021	0241	0461	58102/019
25	10%	8	5	T1	1	7.5	3.98	820	0022	0242	0462	58102/119
25	5%	8	5	T1	1	7.5	3.98	820	0023	0243	0463	58102/519
56	20%	8	5	T1	1	14	3.32	900	0024	0244	0464	58102/027
56	10%	8	5	T1	1	14	3.32	900	0025	0245	0465	58102/127
56	5%	8	5	T1	1	14	3.32	900	0026	0246	0466	58102/527
120	20%	8	5	T2	1	20	2.21	1220	0027	0247	0467	58202/035
120	10%	8	5	T2	1	20	2.21	1220	0028	0248	0468	58202/135
120	5%	8	5	T2	1	20	2.21	1220	0029	0249	0469	58202/535
220	20%	8	5	T2	1	37	2.23	1370	0030	0250	0470	58202/041
220	10%	8	5	T2	1	37	2.23	1370	0031	0251	0471	58202/141
220	5%	8	5	T2	1	37	2.23	1370	0032	0252	0472	58202/541
290	20%	8	5	T3	2	34	1.56	1770	0033	0253	0473	58302/044
290	10%	8	5	T3	2	34	1.56	1770	0034	0254	0474	58302/144
290	5%	8	5	T3	2	34	1.56	1770	0035	0255	0475	58302/544
430	20%	8	5	T3	2	46	1.42	1825	0036	0256	0476	58302/049
430	10%	8	5	T3	2	46	1.42	1825	0037	0257	0477	58302/149
430	5%	8	5	T3	2	46	1.42	1825	0038	0258	0478	58302/549
850	20%	8	5	T4	4	60	0.94	2330	0039	0259	0479	58402/053
850	10%	8	5	T4	4	60	0.94	2330	0040	0260	0480	58402/153
20	20%	10	7	T1	1	6	3.98	820	0041	0261	0481	58103/017
20	10%	10	7	T1	1	6	3.98	820	0042	0262	0482	58103/117
20	5%	10	7	T1	1	6	3.98	820	0043	0263	0483	58103/517
47	20%	10	7	T1	1	13	3.67	855	0044	0264	0484	57612/015
47	10%	10	7	T1	1	13	3.67	855	0045	0265	0485	57612/115
47	5%	10	7	T1	1	13	3.67	855	0046	0266	0486	57612/515
100	20%	10	7	T2	1	15	1.99	1200	0047	0267	0487	58203/033
100	10%	10	7	T2	1	15	1.99	1200	0048	0268	0488	58203/133
100	5%	10	7	T2	1	15	1.99	1200	0049	0269	0489	58203/533
180	20%	10	7	T2	1	30	2.21	1365	0050	0270	0490	57622/022
180	10%	10	7	T2	1	30	2.21	1365	0051	0271	0491	57622/122
180	5%	10	7	T2	1	30	2.21	1365	0052	0272	0492	57622/522
250	20%	10	7	T3	2	30	1.59	1720	0053	0273	0493	58303/042
250	10%	10	7	T3	2	30	1.59	1720	0054	0274	0494	58303/142
250	5%	10	7	T3	2	30	1.59	1720	0055	0275	0495	58303/542
390	20%	10	7	T3	2	44	1.50	1800	0056	0276	0496	58303/048
390	10%	10	7	T3	2	44	1.50	1800	0057	0277	0497	58303/148
390	5%	10	7	T3	2	44	1.50	1800	0058	0278	0498	58303/548
750	20%	10	7	T4	4	50	0.88	2360	0059	0279	0499	58403/052
750	10%	10	7	T4	4	50	0.88	2360	0060	0280	0500	58403/152
15	20%	15	10	T1	1	5	4.42	780	0061	0281	0501	58104/015
15	10%	15	10	T1	1	5	4.42	780	0062	0282	0502	58104/115
15	5%	15	10	T1	1	5	4.42	780	0063	0283	0503	58104/515
33	20%	15	10	T1	1	10	4.02	820	0064	0284	0504	58104/021
33	10%	15	10	T1	1	10	4.02	820	0065	0285	0505	58104/121
33	5%	15	10	T1	1	10	4.02	820	0066	0286	0506	58104/521
70	20%	15	10	T2	1	13	2.46	1150	0067	0287	0507	58204/030
70	10%	15	10	T2	1	13	2.46	1150	0068	0288	0508	58204/130
70	5%	15	10	T2	1	13	2.46	1150	0069	0289	0509	58204/530
120	20%	15	10	T2	1	18	1.99	1450	0070	0290	0510	58204/035
120	10%	15	10	T2	1	18	1.99	1450	0071	0291	0511	58204/135
120	5%	15	10	T2	1	18	1.99	1450	0072	0292	0512	58204/535
170	20%	15	10	T3	2	25	1.95	1480	0073	0293	0513	58304/039
170	10%	15	10	T3	2	25	1.95	1480	0074	0294	0514	58304/139
170	5%	15	10	T3	2	25	1.95	1480	0075	0295	0515	58304/539
270	20%	15	10	T3	2	32	1.57	1740	0076	0296	0516	58304/043
270	10%	15	10	T3	2	32	1.57	1740	0077	0297	0517	58304/143
270	5%	15	10	T3	2	32	1.57	1740	0078	0298	0518	58304/543
540	20%	15	10	T4	6	40	0.98	2330	0079	0299	0519	58404/050
540	10%	15	10	T4	6	40	0.98	2330	0080	0300	0520	58404/150

* Add a letter 'H' after the 4 digit code to include the optional vibration and shock requirements (51g random vibration, 80g sinusoidal and 500g shock)

MIL-PRF-39006 (CLR79) Range

Capacitance µF	Cap Tol %	Rated Voltage 85°C	Category Voltage 125°C	Case Size	Max. D.C. Leakage µA + 25°C	Max. D.F. % @ 25°C 120 Hz	Max. ESR Ohms at +25°C 120 Hz	Max. Ripple Current mA rms at 85°C 40 kHz	M39006/22 - xxx* Failure Rate level % / 1000Hrs			Arcotronics Part Number 4021/-
									M (1.0)	P (0.1)	R (0.01)	
10	20%	25	15	T1	1	4	5.31	715	0081	0301	0521	58105/012
10	10%	25	15	T1	1	4	5.31	715	0082	0302	0522	58105/112
10	5%	25	15	T1	1	4	5.31	715	0083	0303	0523	58105/512
22	20%	25	15	T1	1	6.6	3.98	825	0084	0304	0524	57614/011
22	10%	25	15	T1	1	6.6	3.98	825	0085	0305	0525	57614/111
22	5%	25	15	T1	1	6.6	3.98	825	0086	0306	0526	57614/511
50	20%	25	15	T2	1	11	2.92	1130	0087	0307	0527	58205/026
50	10%	25	15	T2	1	11	2.92	1130	0088	0308	0528	58205/126
50	5%	25	15	T2	1	11	2.92	1130	0089	0309	0529	58205/516
100	20%	25	15	T2	1	15	1.99	1435	0090	0310	0530	57624/019
100	10%	25	15	T2	1	15	1.99	1435	0091	0311	0531	57624/119
100	5%	25	15	T2	1	15	1.99	1435	0092	0312	0532	57624/519
120	20%	25	15	T3	2	21	2.32	1450	0093	0313	0533	58305/035
120	10%	25	15	T3	2	21	2.32	1450	0094	0314	0534	58305/135
120	5%	25	15	T3	2	21	2.32	1450	0095	0315	0535	58305/535
180	20%	25	15	T3	2	26	1.92	1525	0096	0316	0536	58305/040
180	10%	25	15	T3	2	26	1.92	1525	0097	0317	0537	58305/140
180	5%	25	15	T3	2	26	1.92	1525	0098	0318	0538	58305/540
350	20%	25	15	T4	7	35	1.33	1970	0099	0319	0539	58405/047
350	10%	25	15	T4	7	35	1.33	1970	0100	0320	0540	58405/147
8	20%	30	20	T1	1	4	6.64	640	0101	0321	0541	58106/009
8	10%	30	20	T1	1	4	6.64	640	0102	0322	0542	58106/109
8	5%	30	20	T1	1	4	6.64	640	0103	0323	0543	58106/509
15	20%	30	20	T1	1	5	4.42	780	0104	0324	0544	58106/015
15	10%	30	20	T1	1	5	4.42	780	0105	0325	0545	58106/115
15	5%	30	20	T1	1	5	4.42	780	0106	0326	0546	58106/515
40	20%	30	20	T2	1	10	3.32	1120	0107	0327	0547	58206/023
40	10%	30	20	T2	1	10	3.32	1120	0108	0328	0548	58206/123
40	5%	30	20	T2	1	10	3.32	1120	0109	0329	0549	58206/523
68	20%	30	20	T2	1	13	2.54	1285	0110	0330	0550	58206/029
68	10%	30	20	T2	1	13	2.54	1285	0111	0331	0551	58206/129
68	5%	30	20	T2	1	13	2.54	1285	0112	0332	0552	58206/529
100	20%	30	20	T3	2	17	2.26	1450	0113	0333	0553	58306/033
100	10%	30	20	T3	2	17	2.26	1450	0114	0334	0554	58306/133
100	5%	30	20	T3	2	17	2.26	1450	0115	0335	0555	58306/533
150	20%	30	20	T3	2	23	2.03	1525	0116	0336	0556	58306/037
150	10%	30	20	T3	2	23	2.03	1525	0117	0337	0557	58306/137
150	5%	30	20	T3	2	23	2.03	1525	0118	0338	0558	58306/537
300	20%	30	20	T4	8	31	1.37	1950	0119	0339	0559	58406/045
300	10%	30	20	T4	8	31	1.37	1950	0120	0340	0560	58406/145
5	20%	50	30	T1	1	3	7.96	580	0121	0341	0561	58107/007
5	10%	50	30	T1	1	3	7.96	580	0122	0342	0562	58107/107
5	5%	50	30	T1	1	3	7.96	580	0123	0343	0563	58107/507
10	20%	50	30	T1	1	4	5.31	715	0124	0344	0564	58107/012
10	10%	50	30	T1	1	4	5.31	715	0125	0345	0565	58107/112
10	5%	50	30	T1	1	4	5.31	715	0126	0346	0566	58107/512
25	20%	50	30	T2	1	8	4.25	1005	0127	0347	0567	58207/019
25	10%	50	30	T2	1	8	4.25	1005	0128	0348	0568	58207/119
25	5%	50	30	T2	1	8	4.25	1005	0129	0349	0569	58207/519
47	20%	50	30	T2	1	11	3.11	1155	0130	0350	0570	58207/025
47	10%	50	30	T2	1	11	3.11	1155	0131	0351	0571	58207/125
47	5%	50	30	T2	1	11	3.11	1155	0132	0352	0572	58207/525
60	20%	50	30	T3	2	12	2.65	1335	0133	0353	0573	58307/028
60	10%	50	30	T3	2	12	2.65	1335	0134	0354	0574	58307/128
60	5%	50	30	T3	2	12	2.65	1335	0135	0355	0575	58307/528
82	20%	50	30	T3	2	15	2.43	1400	0136	0356	0576	58307/031
82	10%	50	30	T3	2	15	2.43	1400	0137	0357	0577	58307/131
82	5%	50	30	T3	2	15	2.43	1400	0138	0358	0578	58307/531
160	20%	50	30	T4	8	17	1.41	1900	0139	0359	0579	58407/038
160	10%	50	30	T4	8	17	1.41	1900	0140	0360	0580	58407/138
4	20%	60	40	T1	1	2.8	9.29	525	0141	0361	0581	58108/005
4	10%	60	40	T1	1	2.8	9.29	525	0142	0362	0582	58108/105
4	5%	60	40	T1	1	2.8	9.29	525	0143	0363	0583	58108/505
8.2	20%	60	40	T1	1	4	6.47	625	0144	0364	0584	58108/010
8.2	10%	60	40	T1	1	4	6.47	625	0145	0365	0585	58108/110
8.2	5%	60	40	T1	1	4	6.47	625	0146	0366	0586	58108/510
20	20%	60	40	T2	1	7	4.64	930	0147	0367	0587	58208/017
20	10%	60	40	T2	1	7	4.64	930	0148	0368	0588	58208/117
20	5%	60	40	T2	1	7	4.64	930	0149	0369	0589	58208/517
39	20%	60	40	T2	1	10	3.40	1110	0150	0370	0590	58208/022
39	10%	60	40	T2	1	10	3.40	1110	0151	0371	0591	58208/122
39	5%	60	40	T2	1	10	3.40	1110	0152	0372	0592	58208/522
50	20%	60	40	T3	2	10	2.65	1330	0153	0373	0593	58308/026
50	10%	60	40	T3	2	10	2.65	1330	0154	0374	0594	58308/126
50	5%	60	40	T3	2	10	2.65	1330	0155	0375	0595	58308/526
68	20%	60	40	T3	2	13	2.54	1365	0156	0376	0596	58308/029
68	10%	60	40	T3	2	13	2.54	1365	0157	0377	0597	58308/129
68	5%	60	40	T3	2	13	2.54	1365	0158	0378	0598	58308/529
140	20%	60	40	T4	8	16	1.52	1850	0159	0379	0599	58408/036
140	10%	60	40	T4	8	16	1.52	1850	0160	0380	0600	58408/136

* Add a letter 'H' after the 4 digit code to include the optional vibration and shock requirements (51g random vibration, 80g sinusoidal and 500g shock)

MIL-PRF-39006 (CLR79) Range

Capacitance µF	Cap Tol %	Rated Voltage 85°C	Category Voltage 125°C	Case Size	Max. D.C. Leakage µA + 25°C	Max. D.F. % @ 25°C 120 Hz	Max. ESR Ohms at +25°C 120 Hz	Max. Ripple Current mA rms at 85°C 40 kHz	M39006/22 - xxx* Failure Rate level % / 1000Hrs			Arcotronics Part Number 4021/-
									M (1.0)	P (0.1)	R (0.01)	
3.5	20%	75	50	T1	1	2.5	9.48	525	0161	0381	0601	58109/003
3.5	10%	75	50	T1	1	2.5	9.48	525	0162	0382	0602	58109/103
3.5	5%	75	50	T1	1	2.5	9.48	525	0163	0383	0603	58109/503
6.8	20%	75	50	T1	1	3.5	6.83	610	0164	0384	0604	57617/005
6.8	10%	75	50	T1	1	3.5	6.83	610	0165	0385	0605	57617/105
6.8	5%	75	50	T1	1	3.5	6.83	610	0166	0386	0606	57617/505
15	20%	75	50	T2	1	6	5.31	890	0167	0387	0607	58209/015
15	10%	75	50	T2	1	6	5.31	890	0168	0388	0608	58209/115
15	5%	75	50	T2	1	6	5.31	890	0169	0389	0609	58209/515
33	20%	75	50	T2	1	10	4.02	1000	0170	0390	0610	57627/013
33	10%	75	50	T2	1	10	4.02	1000	0171	0391	0611	57627/113
33	5%	75	50	T2	1	10	4.02	1000	0172	0392	0612	57627/513
40	20%	75	50	T3	2	9	2.99	1250	0173	0393	0613	58309/023
40	10%	75	50	T3	2	9	2.99	1250	0174	0394	0614	58309/123
40	5%	75	50	T3	2	9	2.99	1250	0175	0395	0615	58309/523
56	20%	75	50	T3	2	11	2.61	1335	0176	0396	0616	58309/027
56	10%	75	50	T3	2	11	2.61	1335	0177	0397	0617	58309/127
56	5%	75	50	T3	2	11	2.61	1335	0178	0398	0618	58309/527
110	20%	75	50	T4	9	12	1.45	1850	0179	0399	0619	58409/034
110	10%	75	50	T4	9	12	1.45	1850	0180	0400	0620	58409/134

2.5	20%	100	65	T1	1	2	10.62	505	0181	0401	0621	57608/003
2.5	10%	100	65	T1	1	2	10.62	505	0182	0402	0622	57608/103
2.5	5%	100	65	T1	1	2	10.62	505	0183	0403	0623	57608/503
4.7	20%	100	65	T1	1	3	8.47	565	0184	0404	0624	57618/003
4.7	10%	100	65	T1	1	3	8.47	565	0185	0405	0625	57618/103
4.7	5%	100	65	T1	1	3	8.47	565	0186	0406	0626	57618/503
11	20%	100	65	T2	1	5	6.03	835	0187	0407	0627	57606/005
11	10%	100	65	T2	1	5	6.03	835	0188	0408	0628	57606/105
11	5%	100	65	T2	1	5	6.03	835	0189	0409	0629	57606/505
22	20%	100	65	T2	1	7.5	4.52	965	0190	0410	0630	57628/011
22	10%	100	65	T2	1	7.5	4.52	965	0191	0411	0631	57628/111
22	5%	100	65	T2	1	7.5	4.52	965	0192	0412	0632	57628/511
30	20%	100	65	T3	2	7	3.10	1240	0193	0413	0633	58310/020
30	10%	100	65	T3	2	7	3.10	1240	0194	0414	0634	58310/120
30	5%	100	65	T3	2	7	3.10	1240	0195	0415	0635	58310/520
43	20%	100	65	T3	2	8.5	2.62	1335	0196	0416	0636	58310/024
43	10%	100	65	T3	2	8.5	2.62	1335	0197	0417	0637	58310/124
43	5%	100	65	T3	2	8.5	2.62	1335	0198	0418	0638	58310/524
86	20%	100	65	T4	9	10	1.54	1800	0199	0419	0639	58410/032
86	10%	100	65	T4	9	10	1.54	1800	0200	0420	0640	58410/132

1.7	20%	125	85	T1	1	2	15.61	415	0201	0421	0641	57608/006
1.7	10%	125	85	T1	1	2	15.61	415	0202	0422	0642	57608/106
1.7	5%	125	85	T1	1	2	15.61	415	0203	0423	0643	57608/506
3.6	20%	125	85	T1	1	2.7	9.95	520	0204	0424	0644	58111/004
3.6	10%	125	85	T1	1	2.7	9.95	520	0205	0425	0645	58111/104
3.6	5%	125	85	T1	1	2.7	9.95	520	0206	0426	0646	58111/504
9	20%	125	85	T2	1	5	7.37	755	0207	0427	0647	58211/011
9	10%	125	85	T2	1	5	7.37	755	0208	0428	0648	58211/111
9	5%	125	85	T2	1	5	7.37	755	0209	0429	0649	58211/511
14	20%	125	85	T2	1	6	5.69	860	0210	0430	0650	58211/014
14	10%	125	85	T2	1	6	5.69	860	0211	0431	0651	58211/114
14	5%	125	85	T2	1	6	5.69	860	0212	0432	0652	58211/514
18	20%	125	85	T3	2	5	3.69	1130	0213	0433	0653	57639/010
18	10%	125	85	T3	2	5	3.69	1130	0214	0434	0654	57639/110
18	5%	125	85	T3	2	5	3.69	1130	0215	0435	0655	57639/510
25	20%	125	85	T3	2	6	3.18	1200	0216	0436	0656	58311/019
25	10%	125	85	T3	2	6	3.18	1200	0217	0437	0657	58311/119
25	5%	125	85	T3	2	6	3.18	1200	0218	0438	0658	58311/519
56	20%	125	85	T4	10	6.5	1.54	1800	0219	0439	0659	58411/027
56	10%	125	85	T4	10	6.5	1.54	1800	0220	0440	0660	58411/127

MIL-PRF-39006 (CLR81) Range

Capacitance µF	Cap Tol %	Rated Voltage 85°C	Category Voltage 125°C	Case Size	Max. D.C. Leakage µA + 25°C	Max. D.F. % @ 25°C 120 Hz	Max. ESR Ohms at +25°C 120 Hz	Max. Ripple Current mA rms at 85°C 40 kHz	M39006/25 - xxx* Failure Rate level % / 1000Hrs			Arcotronics Part Number 4021/-
									M (1.0)	P (0.1)	R (0.01)	
220	20%	6	4	T1	2	50	3.02	1000	0001	0089	0177	58101/041
220	10%	6	4	T1	2	50	3.02	1000	0002	0090	0178	58101/141
820	20%	6	4	T2	3	155	2.51	1500	0003	0091	0179	57606/006
820	10%	6	4	T2	3	155	2.51	1500	0004	0092	0180	57606/106
1500	20%	6	4	T3	5	172	1.52	1900	0005	0093	0181	58301/055
1500	10%	6	4	T3	5	172	1.52	1900	0006	0094	0182	58301/155
2200	20%	6	4	T4	6	170	1.03	2300	0007	0095	0183	58401/057
2200	10%	6	4	T4	6	170	1.03	2300	0008	0096	0184	58401/157
180	20%	8	5	T1	2	41	3.02	1000	0009	0097	0185	58102/040
180	10%	8	5	T1	2	41	3.02	1000	0010	0098	0186	58102/140
680	20%	8	5	T2	3	130	2.54	1500	0011	0099	0187	57606/007
680	10%	8	5	T2	3	130	2.54	1500	0012	0100	0188	57606/107

* Add a letter 'H' after the 4 digit code to include the optional vibration and shock requirements (51g random vibration, 80g sinusoidal and 500g shock)

MIL-PRF-39006 (CLR81) Range

Capacitance µF	Cap Tol %	Rated Voltage 85°C	Category Voltage 125°C	Case Size	Max. D.C. Leakage µA + 25°C	Max. D.F. % @ 25°C 120 Hz	Max. ESR Ohms at +25°C 120 Hz	Max. Ripple Current mA rms at 85°C 40 kHz	M39006/25 - xxx*			Arcotronics Part Number 402/1/-
									Failure Rate level % / 1000Hrs	M (1.0)	P (0.1)	
1500	20%	8	5	T3	5	170	1.50	1900	0013	0101	0189	58302/055
1500	10%	8	5	T3	5	170	1.50	1900	0014	0102	0190	58302/155
1800	20%	8	5	T4	7	138	1.02	2300	0015	0103	0191	57607/005
1800	10%	8	5	T4	7	138	1.02	2300	0016	0104	0192	57607/105
150	20%	10	7	T1	2	34	3.01	900	0017	0105	0193	57622/021
150	10%	10	7	T1	2	34	3.01	900	0018	0106	0194	57622/121
560	20%	10	7	T2	3	106	2.51	1450	0019	0107	0195	57622/028
560	10%	10	7	T2	3	106	2.51	1450	0020	0108	0196	57622/128
1200	20%	10	7	T3	5	137	1.51	1850	0021	0109	0197	57632/032
1200	10%	10	7	T3	5	137	1.51	1850	0022	0110	0198	57632/132
1500	20%	10	7	T4	7	114	1.01	2300	0023	0111	0199	57642/033
1500	10%	10	7	T4	7	114	1.01	2300	0024	0112	0200	57642/133
100	20%	15	10	T1	2	30	3.98	900	0025	0113	0201	58104/033
100	10%	15	10	T1	2	30	3.98	900	0026	0114	0202	58104/133
390	20%	15	10	T2	3	74	2.52	1450	0027	0115	0203	58204/048
390	10%	15	10	T2	3	74	2.52	1450	0028	0116	0204	58204/148
820	20%	15	10	T3	6	111	1.80	1800	0029	0117	0205	57605/004
820	10%	15	10	T3	6	111	1.80	1800	0030	0118	0206	57605/104
1000	20%	15	10	T4	8	92	1.22	2300	0031	0119	0207	57607/008
1000	10%	15	10	T4	8	92	1.22	2300	0032	0120	0208	57607/108
68	20%	25	15	T1	2	22	4.29	850	0033	0121	0209	57614/017
68	10%	25	15	T1	2	22	4.29	850	0034	0122	0210	57614/117
270	20%	25	15	T2	3	55	2.70	1400	0035	0123	0211	57624/024
270	10%	25	15	T2	3	55	2.70	1400	0036	0124	0212	57624/124
560	20%	25	15	T3	7	76	1.80	1750	0037	0125	0213	57634/028
560	10%	25	15	T3	7	76	1.80	1750	0038	0126	0214	57634/128
680	20%	25	15	T4	8	63	1.23	2100	0039	0127	0215	57644/029
680	10%	25	15	T4	8	63	1.23	2100	0040	0128	0216	57644/129
56	20%	30	20	T1	2	22	5.21	800	0041	0129	0217	58106/027
56	10%	30	20	T1	2	22	5.21	800	0042	0130	0218	58106/127
220	20%	30	20	T2	3	42	2.53	1200	0043	0131	0219	58206/041
220	10%	30	20	T2	3	42	2.53	1200	0044	0132	0220	58206/141
470	20%	30	20	T3	8	64	1.81	1500	0045	0133	0221	57605/001
470	10%	30	20	T3	8	64	1.81	1500	0046	0134	0222	57605/101
560	20%	30	20	T4	9	55	1.30	2000	0047	0135	0223	58406/051
560	10%	30	20	T4	9	55	1.30	2000	0048	0136	0224	58406/151
33	20%	50	30	T1	2	12.3	4.95	700	0049	0137	0225	58107/021
33	10%	50	30	T1	2	12.3	4.95	700	0050	0138	0226	58107/121
120	20%	50	30	T2	4	22.5	2.49	1200	0051	0139	0227	58207/035
120	10%	50	30	T2	4	22.5	2.49	1200	0052	0140	0228	58207/135
270	20%	50	30	T3	8	37	1.82	1450	0053	0141	0229	58307/043
270	10%	50	30	T3	8	37	1.82	1450	0054	0142	0230	58307/143
330	20%	50	30	T4	9	38	1.53	1900	0055	0143	0231	58407/046
330	10%	50	30	T4	9	38	1.53	1900	0056	0144	0232	58407/146
27	20%	60	40	T1	3	10.2	5.01	700	0057	0145	0233	57608/007
27	10%	60	40	T1	3	10.2	5.01	700	0058	0146	0234	57608/107
100	20%	60	40	T2	4	19	2.52	1100	0059	0147	0235	58208/033
100	10%	60	40	T2	4	19	2.52	1100	0060	0148	0236	58208/133
220	20%	60	40	T3	8	30	1.81	1400	0061	0149	0237	58308/041
220	10%	60	40	T3	8	30	1.81	1400	0062	0150	0238	58308/141
270	20%	60	40	T4	9	27	1.33	1850	0063	0151	0239	58408/043
270	10%	60	40	T4	9	27	1.33	1850	0064	0152	0240	58408/143
22	20%	75	50	T1	3	8.5	5.13	600	0065	0153	0241	57617/011
22	10%	75	50	T1	3	8.5	5.13	600	0066	0154	0242	57617/111
82	20%	75	50	T2	4	15.2	2.46	1000	0067	0155	0243	57627/018
82	10%	75	50	T2	4	15.2	2.46	1000	0068	0156	0244	57627/118
180	20%	75	50	T3	9	37	2.23	1300	0069	0157	0245	57637/022
180	10%	75	50	T3	9	37	2.23	1300	0070	0158	0246	57637/122
220	20%	75	50	T4	10	24.4	1.80	1800	0071	0159	0247	57647/023
220	10%	75	50	T4	10	24.4	1.80	1800	0072	0160	0248	57647/123
10	20%	100	65	T1	3	4.5	5.97	800	0073	0161	0249	57618/007
10	10%	100	65	T1	3	4.5	5.97	800	0074	0162	0250	57618/107
39	20%	100	65	T2	5	10.4	3.54	1300	0075	0163	0251	57628/014
39	10%	100	65	T2	5	10.4	3.54	1300	0076	0164	0252	57628/114
68	20%	100	65	T3	10	11.3	2.21	1600	0077	0165	0253	57638/017
68	10%	100	65	T3	10	11.3	2.21	1600	0078	0166	0254	57638/117
120	20%	100	65	T4	12	25	2.76	2000	0079	0167	0255	57648/020
120	10%	100	65	T4	12	25	2.76	2000	0080	0168	0256	57648/120
6.8	20%	125	85	T1	3	6	11.71	700	0081	0169	0257	57619/005
6.8	10%	125	85	T1	3	6	11.71	700	0082	0170	0258	57619/105
27	20%	125	85	T2	5	7.2	3.54	1200	0083	0171	0259	57629/012
27	10%	125	85	T2	5	7.2	3.54	1200	0084	0172	0260	57629/112
47	20%	125	85	T3	10	7.9	2.23	1500	0085	0173	0261	57639/015
47	10%	125	85	T3	10	7.9	2.23	1500	0086	0174	0262	57639/115
82	20%	125	85	T4	12	17.4	2.82	1900	0087	0175	0263	57649/018
82	10%	125	85	T4	12	17.4	2.82	1900	0088	0176	0264	57649/118

* Add a letter 'H' after the 4 digit code to include the optional vibration and shock requirements (51g random vibration, 80g sinusoidal and 500g shock)

MIL-PRF-39006 (CLR90) Range

Capacitance µF	Cap Tol %	Rated Voltage 85°C	Category Voltage 125°C	Case Size	Max. D.C. Leakage µA + 25°C	Max. D.F. % @ 25°C 120 Hz	Max. ESR Ohms at +25°C 120 Hz	Max. Ripple Current mA rms at 85°C 40 kHz	M39006/30 - xxx* Failure Rate level % / 1000Hrs			Arcotronics Part Number 4021/-
									M (1.0)	P (0.1)	R (0.01)	
30	20%	6	4	T1	1	4.5	1.99	820	0001	0221	0441	58101/020
30	10%	6	4	T1	1	4.5	1.99	820	0002	0222	0442	58101/120
30	5%	6	4	T1	1	4.5	1.99	820	0003	0223	0443	58101/520
68	20%	6	4	T1	1	7.5	1.58	960	0004	0224	0444	58101/029
68	10%	6	4	T1	1	7.5	1.58	960	0005	0225	0445	58101/129
68	5%	6	4	T1	1	7.5	1.58	960	0006	0226	0446	58101/529
140	20%	6	4	T2	1	10.5	0.99	1200	0007	0227	0447	58201/036
140	10%	6	4	T2	1	10.5	0.99	1200	0008	0228	0448	58201/136
140	5%	6	4	T2	1	10.5	0.99	1200	0009	0229	0449	58201/536
270	20%	6	4	T2	1	22.5	1.11	1375	0010	0230	0450	58301/043
270	10%	6	4	T2	1	22.5	1.11	1375	0011	0231	0451	58301/143
270	5%	6	4	T2	1	22.5	1.11	1375	0012	0232	0452	58301/543
330	20%	6	4	T3	2	18	0.73	1800	0013	0233	0453	58301/046
330	10%	6	4	T3	2	18	0.73	1800	0014	0234	0454	58301/146
330	5%	6	4	T3	2	18	0.73	1800	0015	0235	0455	58301/546
560	20%	6	4	T3	2	27.5	0.65	1900	0016	0236	0456	58301/051
560	10%	6	4	T3	2	27.5	0.65	1900	0017	0237	0457	58301/151
560	5%	6	4	T3	2	27.5	0.65	1900	0018	0238	0458	58301/551
1200	20%	6	4	T4	3	45	0.50	2265	0019	0239	0459	58401/054
1200	10%	6	4	T4	3	45	0.50	2265	0020	0240	0460	58401/154
25	20%	8	5	T1	1	3.75	1.99	820	0021	0241	0461	58102/019
25	10%	8	5	T1	1	3.75	1.99	820	0022	0242	0462	58102/119
25	5%	8	5	T1	1	3.75	1.99	820	0023	0243	0463	58102/519
56	20%	8	5	T1	1	7	1.66	900	0024	0244	0464	58102/027
56	10%	8	5	T1	1	7	1.66	900	0025	0245	0465	58102/127
56	5%	8	5	T1	1	7	1.66	900	0026	0246	0466	58102/527
120	20%	8	5	T2	1	10	1.11	1220	0027	0247	0467	58202/035
120	10%	8	5	T2	1	10	1.11	1220	0028	0248	0468	58202/135
120	5%	8	5	T2	1	10	1.11	1220	0029	0249	0469	58202/535
220	20%	8	5	T2	1	18.5	1.12	1370	0030	0250	0470	58202/041
220	10%	8	5	T2	1	18.5	1.12	1370	0031	0251	0471	58202/141
220	5%	8	5	T2	1	18.5	1.12	1370	0032	0252	0472	58202/541
290	20%	8	5	T3	2	17	0.78	1770	0033	0253	0473	58302/044
290	10%	8	5	T3	2	17	0.78	1770	0034	0254	0474	58302/144
290	5%	8	5	T3	2	17	0.78	1770	0035	0255	0475	58302/544
430	20%	8	5	T3	2	23	0.71	1825	0036	0256	0476	58302/049
430	10%	8	5	T3	2	23	0.71	1825	0037	0257	0477	58302/149
430	5%	8	5	T3	2	23	0.71	1825	0038	0258	0478	58302/549
850	20%	8	5	T4	4	30	0.47	2330	0039	0259	0479	58402/053
850	10%	8	5	T4	4	30	0.47	2330	0040	0260	0480	58402/153
20	20%	10	7	T1	1	3	1.99	820	0041	0261	0481	58103/017
20	10%	10	7	T1	1	3	1.99	820	0042	0262	0482	58103/117
20	5%	10	7	T1	1	3	1.99	820	0043	0263	0483	58103/517
47	20%	10	7	T1	1	6.5	1.84	855	0044	0264	0484	57612/015
47	10%	10	7	T1	1	6.5	1.84	855	0045	0265	0485	57612/115
47	5%	10	7	T1	1	6.5	1.84	855	0046	0266	0486	57612/515
100	20%	10	7	T2	1	7.5	0.99	1200	0047	0267	0487	58203/033
100	10%	10	7	T2	1	7.5	0.99	1200	0048	0268	0488	58203/133
100	5%	10	7	T2	1	7.5	0.99	1200	0049	0269	0489	58203/533
180	20%	10	7	T2	1	15	1.11	1365	0050	0270	0490	57622/022
180	10%	10	7	T2	1	15	1.11	1365	0051	0271	0491	57622/122
180	5%	10	7	T2	1	15	1.11	1365	0052	0272	0492	57622/522
250	20%	10	7	T3	2	15	0.80	1720	0053	0273	0493	58303/042
250	10%	10	7	T3	2	15	0.80	1720	0054	0274	0494	58303/142
250	5%	10	7	T3	2	15	0.80	1720	0055	0275	0495	58303/542
390	20%	10	7	T3	2	22	0.75	1800	0056	0276	0496	58303/048
390	10%	10	7	T3	2	22	0.75	1800	0057	0277	0497	58303/148
390	5%	10	7	T3	2	22	0.75	1800	0058	0278	0498	58303/548
750	20%	10	7	T4	4	25	0.44	2360	0059	0279	0499	58403/052
750	10%	10	7	T4	4	25	0.44	2360	0060	0280	0500	58403/152
15	20%	15	10	T1	1	2.5	2.21	780	0061	0281	0501	58104/015
15	10%	15	10	T1	1	2.5	2.21	780	0062	0282	0502	58104/115
15	5%	15	10	T1	1	2.5	2.21	780	0063	0283	0503	58104/515
33	20%	15	10	T1	1	5	2.01	820	0064	0284	0504	58104/021
33	10%	15	10	T1	1	5	2.01	820	0065	0285	0505	58104/121
33	5%	15	10	T1	1	5	2.01	820	0066	0286	0506	58104/521
70	20%	15	10	T2	1	6.5	1.23	1150	0067	0287	0507	58204/030
70	10%	15	10	T2	1	6.5	1.23	1150	0068	0288	0508	58204/130
70	5%	15	10	T2	1	6.5	1.23	1150	0069	0289	0509	58204/530
120	20%	15	10	T2	1	9	0.99	1450	0070	0290	0510	58204/035
120	10%	15	10	T2	1	9	0.99	1450	0071	0291	0511	58204/135
120	5%	15	10	T2	1	9	0.99	1450	0072	0292	0512	58204/535
170	20%	15	10	T3	2	12.5	0.98	1480	0073	0293	0513	58304/039
170	10%	15	10	T3	2	12.5	0.98	1480	0074	0294	0514	58304/139
170	5%	15	10	T3	2	12.5	0.98	1480	0075	0295	0515	58304/539
270	20%	15	10	T3	2	16	0.79	1740	0076	0296	0516	58304/043
270	10%	15	10	T3	2	16	0.79	1740	0077	0297	0517	58304/143
270	5%	15	10	T3	2	16	0.79	1740	0078	0298	0518	58304/543
540	20%	15	10	T4	6	20	0.49	2330	0079	0299	0519	58404/050
540	10%	15	10	T4	6	20	0.49	2330	0080	0300	0520	58404/150

* Add a letter 'H' after the 4 digit code to include the optional vibration and shock requirements (51g random vibration, 80g sinusoidal and 500g shock)

MIL-PRF-39006 (CLR90) Range

Capacitance µF	Cap Tol %	Rated Voltage 85°C	Category Voltage 125°C	Case Size	Max. D.C. Leakage µA + 25°C	Max. D.F. % @ 25°C 120 Hz	Max. ESR Ohms at +25°C 120 Hz	Max. Ripple Current mA rms at 85°C 40 kHz	M39006/30 - xxx*			Arcotronics Part Number 402/1/-
									M (1.0)	P (0.1)	R (0.01)	
10	20%	25	15	T1	1	2	2.66	715	0081	0301	0521	58105/012
10	10%	25	15	T1	1	2	2.66	715	0082	0302	0522	58105/112
10	5%	25	15	T1	1	2	2.66	715	0083	0303	0523	58105/512
22	20%	25	15	T1	1	3.3	1.99	825	0084	0304	0524	57614/011
22	10%	25	15	T1	1	3.3	1.99	825	0085	0305	0525	57614/111
22	5%	25	15	T1	1	3.3	1.99	825	0086	0306	0526	57614/511
50	20%	25	15	T2	1	5.5	1.46	1130	0087	0307	0527	58205/026
50	10%	25	15	T2	1	5.5	1.46	1130	0088	0308	0528	58205/126
50	5%	25	15	T2	1	5.5	1.46	1130	0089	0309	0529	58205/516
100	20%	25	15	T2	1	7.5	0.99	1435	0090	0310	0530	57624/019
100	10%	25	15	T2	1	7.5	0.99	1435	0091	0311	0531	57624/119
100	5%	25	15	T2	1	7.5	0.99	1435	0092	0312	0532	57624/519
120	20%	25	15	T3	2	10.5	1.16	1450	0093	0313	0533	58305/035
120	10%	25	15	T3	2	10.5	1.16	1450	0094	0314	0534	58305/135
120	5%	25	15	T3	2	10.5	1.16	1450	0095	0315	0535	58305/535
180	20%	25	15	T3	2	13	0.96	1525	0096	0316	0536	58305/040
180	10%	25	15	T3	2	13	0.96	1525	0097	0317	0537	58305/140
180	5%	25	15	T3	2	13	0.96	1525	0098	0318	0538	58305/540
350	20%	25	15	T4	7	17.5	0.67	1970	0099	0319	0539	58405/047
350	10%	25	15	T4	7	17.5	0.67	1970	0100	0320	0540	58405/147
8	20%	30	20	T1	1	2	3.32	640	0101	0321	0541	58106/009
8	10%	30	20	T1	1	2	3.32	640	0102	0322	0542	58106/109
8	5%	30	20	T1	1	2	3.32	640	0103	0323	0543	58106/509
15	20%	30	20	T1	1	2.5	2.21	780	0104	0324	0544	58106/015
15	10%	30	20	T1	1	2.5	2.21	780	0105	0325	0545	58106/115
15	5%	30	20	T1	1	2.5	2.21	780	0106	0326	0546	58106/515
40	20%	30	20	T2	1	5	1.66	1120	0107	0327	0547	58206/023
40	10%	30	20	T2	1	5	1.66	1120	0108	0328	0548	58206/123
40	5%	30	20	T2	1	5	1.66	1120	0109	0329	0549	58206/523
68	20%	30	20	T2	1	6.5	1.27	1285	0110	0330	0550	58206/029
68	10%	30	20	T2	1	6.5	1.27	1285	0111	0331	0551	58206/129
68	5%	30	20	T2	1	6.5	1.27	1285	0112	0332	0552	58206/529
100	20%	30	20	T3	2	8.5	1.13	1450	0113	0333	0553	58306/033
100	10%	30	20	T3	2	8.5	1.13	1450	0114	0334	0554	58306/133
100	5%	30	20	T3	2	8.5	1.13	1450	0115	0335	0555	58306/533
150	20%	30	20	T3	2	11.5	1.02	1525	0116	0336	0556	58306/037
150	10%	30	20	T3	2	11.5	1.02	1525	0117	0337	0557	58306/137
150	5%	30	20	T3	2	11.5	1.02	1525	0118	0338	0558	58306/537
300	20%	30	20	T4	8	15.5	0.69	1950	0119	0339	0559	58406/045
300	10%	30	20	T4	8	15.5	0.69	1950	0120	0340	0560	58406/145
5	20%	50	30	T1	1	1.5	3.98	580	0121	0341	0561	58107/007
5	10%	50	30	T1	1	1.5	3.98	580	0122	0342	0562	58107/107
5	5%	50	30	T1	1	1.5	3.98	580	0123	0343	0563	58107/507
10	20%	50	30	T1	1	2	2.66	715	0124	0344	0564	58107/012
10	10%	50	30	T1	1	2	2.66	715	0125	0345	0565	58107/112
10	5%	50	30	T1	1	2	2.66	715	0126	0346	0566	58107/512
25	20%	50	30	T2	1	4	2.13	1005	0127	0347	0567	58207/019
25	10%	50	30	T2	1	4	2.13	1005	0128	0348	0568	58207/119
25	5%	50	30	T2	1	4	2.13	1005	0129	0349	0569	58207/519
47	20%	50	30	T2	1	5.5	1.56	1155	0130	0350	0570	58207/025
47	10%	50	30	T2	1	5.5	1.56	1155	0131	0351	0571	58207/125
47	5%	50	30	T2	1	5.5	1.56	1155	0132	0352	0572	58207/525
60	20%	50	30	T3	2	6	1.33	1335	0133	0353	0573	58307/028
60	10%	50	30	T3	2	6	1.33	1335	0134	0354	0574	58307/128
60	5%	50	30	T3	2	6	1.33	1335	0135	0355	0575	58307/528
82	20%	50	30	T3	2	7.5	1.22	1400	0136	0356	0576	58307/031
82	10%	50	30	T3	2	7.5	1.22	1400	0137	0357	0577	58307/131
82	5%	50	30	T3	2	7.5	1.22	1400	0138	0358	0578	58307/531
160	20%	50	30	T4	8	8.5	0.71	1900	0139	0359	0579	58407/038
160	10%	50	30	T4	8	8.5	0.71	1900	0140	0360	0580	58407/138
4	20%	60	40	T1	1	1.4	4.65	525	0141	0361	0581	58108/005
4	10%	60	40	T1	1	1.4	4.65	525	0142	0362	0582	58108/105
4	5%	60	40	T1	1	1.4	4.65	525	0143	0363	0583	58108/505
8.2	20%	60	40	T1	1	2	3.24	625	0144	0364	0584	58108/010
8.2	10%	60	40	T1	1	2	3.24	625	0145	0365	0585	58108/110
8.2	5%	60	40	T1	1	2	3.24	625	0146	0366	0586	58108/510
20	20%	60	40	T2	1	3.5	2.32	930	0147	0367	0587	58208/017
20	10%	60	40	T2	1	3.5	2.32	930	0148	0368	0588	58208/117
20	5%	60	40	T2	1	3.5	2.32	930	0149	0369	0589	58208/517
39	20%	60	40	T2	1	5	1.70	1110	0150	0370	0590	58208/022
39	10%	60	40	T2	1	5	1.70	1110	0151	0371	0591	58208/122
39	5%	60	40	T2	1	5	1.70	1110	0152	0372	0592	58208/522
50	20%	60	40	T3	2	5	1.33	1330	0153	0373	0593	58308/026
50	10%	60	40	T3	2	5	1.33	1330	0154	0374	0594	58308/126
50	5%	60	40	T3	2	5	1.33	1330	0155	0375	0595	58308/526
68	20%	60	40	T3	2	6.5	1.27	1365	0156	0376	0596	58308/029
68	10%	60	40	T3	2	6.5	1.27	1365	0157	0377	0597	58308/129
68	5%	60	40	T3	2	6.5	1.27	1365	0158	0378	0598	58308/529
140	20%	60	40	T4	8	8	0.76	1850	0159	0379	0599	58408/036
140	10%	60	40	T4	8	8	0.76	1850	0160	0380	0600	58408/136

*Add a letter 'H' after the 4 digit code to include the optional vibration and shock requirements (51g random vibration, 80g sinusoidal and 500g shock)

MIL-PRF-39006 (CLR90) Range

Capacitance µF	Cap Tol %	Rated Voltage 85°C	Category Voltage 125°C	Case Size	Max. D.C. Leakage µA + 25°C	Max. D.F. % @ 25°C 120 Hz	Max. ESR Ohms at +25°C 120 Hz	Max. Ripple Current mA rms at 85°C 40 kHz	M39006/30 - xxx* Failure Rate level % / 1000Hrs			Arcotronics Part Number 4021/-
									M (1.0)	P (0.1)	R (0.01)	
3.5	20%	75	50	T1	1	1.25	4.74	525	0161	0381	0601	58109/003
3.5	10%	75	50	T1	1	1.25	4.74	525	0162	0382	0602	58109/103
3.5	5%	75	50	T1	1	1.25	4.74	525	0163	0383	0603	58109/503
6.8	20%	75	50	T1	1	1.75	3.42	610	0164	0384	0604	57617/005
6.8	10%	75	50	T1	1	1.75	3.42	610	0165	0385	0605	57617/105
6.8	5%	75	50	T1	1	1.75	3.42	610	0166	0386	0606	57617/505
15	20%	75	50	T2	1	3	2.66	890	0167	0387	0607	58209/015
15	10%	75	50	T2	1	3	2.66	890	0168	0388	0608	58209/115
15	5%	75	50	T2	1	3	2.66	890	0169	0389	0609	58209/515
33	20%	75	50	T2	1	5	2.01	1000	0170	0390	0610	57627/013
33	10%	75	50	T2	1	5	2.01	1000	0171	0391	0611	57627/113
33	5%	75	50	T2	1	5	2.01	1000	0172	0392	0612	57627/513
40	20%	75	50	T3	2	4.5	1.50	1250	0173	0393	0613	58309/023
40	10%	75	50	T3	2	4.5	1.50	1250	0174	0394	0614	58309/123
40	5%	75	50	T3	2	4.5	1.50	1250	0175	0395	0615	58309/523
56	20%	75	50	T3	2	5.5	1.31	1335	0176	0396	0616	58309/027
56	10%	75	50	T3	2	5.5	1.31	1335	0177	0397	0617	58309/127
56	5%	75	50	T3	2	5.5	1.31	1335	0178	0398	0618	58309/527
110	20%	75	50	T4	9	6	0.73	1850	0179	0399	0619	58409/034
110	10%	75	50	T4	9	6	0.73	1850	0180	0400	0620	58409/134

2.5	20%	100	65	T1	1	1	5.31	505	0181	0401	0621	57608/003
2.5	10%	100	65	T1	1	1	5.31	505	0182	0402	0622	57608/103
2.5	5%	100	65	T1	1	1	5.31	505	0183	0403	0623	57608/503
4.7	20%	100	65	T1	1	1.5	4.24	565	0184	0404	0624	57618/003
4.7	10%	100	65	T1	1	1.5	4.24	565	0185	0405	0625	57618/103
4.7	5%	100	65	T1	1	1.5	4.24	565	0186	0406	0626	57618/503
11	20%	100	65	T2	1	2.5	3.02	835	0187	0407	0627	57606/005
11	10%	100	65	T2	1	2.5	3.02	835	0188	0408	0628	57606/105
11	5%	100	65	T2	1	2.5	3.02	835	0189	0409	0629	57606/505
22	20%	100	65	T2	1	3.75	2.26	965	0190	0410	0630	57628/011
22	10%	100	65	T2	1	3.75	2.26	965	0191	0411	0631	57628/111
22	5%	100	65	T2	1	3.75	2.26	965	0192	0412	0632	57628/511
30	20%	100	65	T3	2	3.5	1.55	1240	0193	0413	0633	58310/020
30	10%	100	65	T3	2	3.5	1.55	1240	0194	0414	0634	58310/120
30	5%	100	65	T3	2	3.5	1.55	1240	0195	0415	0635	58310/520
43	20%	100	65	T3	2	4.25	1.31	1335	0196	0416	0636	58310/024
43	10%	100	65	T3	2	4.25	1.31	1335	0197	0417	0637	58310/124
43	5%	100	65	T3	2	4.25	1.31	1337	0198	0418	0638	58310/524
86	20%	100	65	T4	9	5	0.77	1800	0199	0419	0639	58410/032
86	10%	100	65	T4	9	5	0.77	1800	0200	0420	0640	58410/132

1.7	20%	125	85	T1	1	1	7.81	415	0201	0421	0641	57608/006
1.7	10%	125	85	T1	1	1	7.81	415	0202	0422	0642	57608/106
1.7	5%	125	85	T1	1	1	7.81	415	0203	0423	0643	57608/506
3.6	20%	125	85	T1	1	1.35	4.98	520	0204	0424	0644	58111/004
3.6	10%	125	85	T1	1	1.35	4.98	520	0205	0425	0645	58111/104
3.6	5%	125	85	T1	1	1.35	4.98	520	0206	0426	0646	58111/504
9	20%	125	85	T2	1	2.5	3.69	755	0207	0427	0647	58211/011
9	10%	125	85	T2	1	2.5	3.69	755	0208	0428	0648	58211/111
9	5%	125	85	T2	1	2.5	3.69	755	0209	0429	0649	58211/511
14	20%	125	85	T2	1	3	2.85	860	0210	0430	0650	58211/014
14	10%	125	85	T2	1	3	2.85	860	0211	0431	0651	58211/114
14	5%	125	85	T2	1	3	2.85	860	0212	0432	0652	58211/514
18	20%	125	85	T3	2	2.5	1.85	1130	0213	0433	0653	57639/010
18	10%	125	85	T3	2	2.5	1.85	1130	0214	0434	0654	57639/110
18	5%	125	85	T3	2	2.5	1.85	1130	0215	0435	0655	57639/510
25	20%	125	85	T3	2	3	1.59	1200	0216	0436	0656	58311/019
25	10%	125	85	T3	2	3	1.59	1200	0217	0437	0657	58311/119
25	5%	125	85	T3	2	3	1.59	1200	0218	0438	0658	58311/519
56	20%	125	85	T4	10	3.25	0.77	1800	0219	0439	0659	58411/027
56	10%	125	85	T4	10	3.25	0.77	1800	0220	0440	0660	58411/127

MIL-PRF-39006 (CLR91) Range

Capacitance µF	Cap Tol %	Rated Voltage 85°C	Category Voltage 125°C	Case Size	Max. D.C. Leakage µA + 25°C	Max. D.F. % @ 25°C 120 Hz	Max. ESR Ohms at +25°C 120 Hz	Max. Ripple Current mA rms at 85°C 40 kHz	M39006/31 - xxx* Failure Rate level % / 1000Hrs			Arcotronics Part Number 4021/-
									M (1.0)	P (0.1)	R (0.01)	
220	20%	6	4	T1	2	25	1.51	1000	0001	0089	0177	58101/041
220	10%	6	4	T1	2	25	1.51	1000	0002	0090	0178	58101/141
820	20%	6	4	T2	3	77.5	1.26	1500	0003	0091	0179	57606/006
820	10%	6	4	T2	3	77.5	1.26	1500	0004	0092	0180	57606/106
1500	20%	6	4	T3	5	86	0.76	1900	0005	0093	0181	58301/055
1500	10%	6	4	T3	5	86	0.76	1900	0006	0094	0182	58301/155
2200	20%	6	4	T4	6	85	0.52	2300	0007	0095	0183	58401/057
2200	10%	6	4	T4	6	85	0.52	2300	0008	0096	0184	58401/157
180	20%	8	5	T1	2	20.5	1.51	1000	0009	0097	0185	58102/040
180	10%	8	5	T1	2	20.5	1.51	1000	0010	0098	0186	58102/140
680	20%	8	5	T2	3	65	1.27	1500	0011	0099	0187	57606/007
680	10%	8	5	T2	3	65	1.27	1500	0012	0100	0188	57606/107

* Add a letter 'H' after the 4 digit code to include the optional vibration and shock requirements (51g random vibration, 80g sinusoidal and 500g shock)

MIL-PRF-39006 (CLR91) Range

Capacitance µF	Cap Tol %	Rated Voltage 85°C	Category Voltage 125°C	Case Size	Max. D.C. Leakage µA + 25°C	Max. D.F. % @ 25°C 120 Hz	Max. ESR Ohms at +25°C 120 Hz	Max. Ripple Current mA rms at 85°C 40 kHz	M39006/31 - xxx*			Arcotronics Part Number 4021/-
									M (1.0)	P (0.1)	R (0.01)	
1500	20%	8	5	T3	5	85	0.75	1900	0013	0101	0189	58302/055
1500	10%	8	5	T3	5	85	0.75	1900	0014	0102	0190	58302/155
1800	20%	8	5	T4	7	69	0.51	2300	0015	0103	0191	57607/005
1800	10%	8	5	T4	7	69	0.51	2300	0016	0104	0192	57607/105
150	20%	10	7	T1	2	17	1.51	900	0017	0105	0193	57622/021
150	10%	10	7	T1	2	17	1.51	900	0018	0106	0194	57622/121
560	20%	10	7	T2	3	53	1.26	1450	0019	0107	0195	57622/028
560	10%	10	7	T2	3	53	1.26	1450	0020	0108	0196	57622/128
1200	20%	10	7	T3	5	68.5	0.76	1850	0021	0109	0197	57632/032
1200	10%	10	7	T3	5	68.5	0.76	1850	0022	0110	0198	57632/132
1500	20%	10	7	T4	7	57	0.51	2300	0023	0111	0199	57642/033
1500	10%	10	7	T4	7	57	0.51	2300	0024	0112	0200	57642/133
100	20%	15	10	T1	2	15	1.99	900	0025	0113	0201	58104/033
100	10%	15	10	T1	2	15	1.99	900	0026	0114	0202	58104/133
390	20%	15	10	T2	3	37	1.26	1450	0027	0115	0203	58204/048
390	10%	15	10	T2	3	37	1.26	1450	0028	0116	0204	58204/148
820	20%	15	10	T3	6	55.5	0.90	1800	0029	0117	0205	57605/004
820	10%	15	10	T3	6	55.5	0.90	1800	0030	0118	0206	57605/104
1000	20%	15	10	T4	8	46	0.61	2300	0031	0119	0207	57607/008
1000	10%	15	10	T4	8	46	0.61	2300	0032	0120	0208	57607/108
68	20%	25	15	T1	2	11	2.15	850	0033	0121	0209	57614/017
68	10%	25	15	T1	2	11	2.15	850	0034	0122	0210	57614/117
270	20%	25	15	T2	3	27.5	1.35	1400	0035	0123	0211	57624/024
270	10%	25	15	T2	3	27.5	1.35	1400	0036	0124	0212	57624/124
560	20%	25	15	T3	7	38	0.90	1750	0037	0125	0213	57634/028
560	10%	25	15	T3	7	38	0.90	1750	0038	0126	0214	57634/128
680	20%	25	15	T4	8	31.5	0.62	2100	0039	0127	0215	57644/029
680	10%	25	15	T4	8	31.5	0.62	2100	0040	0128	0216	57644/129
56	20%	30	20	T1	2	11	2.61	800	0041	0129	0217	58106/027
56	10%	30	20	T1	2	11	2.61	800	0042	0130	0218	58106/127
220	20%	30	20	T2	3	21	1.27	1200	0043	0131	0219	58206/041
220	10%	30	20	T2	3	21	1.27	1200	0044	0132	0220	58206/141
470	20%	30	20	T3	8	32	0.91	1500	0045	0133	0221	57605/001
470	10%	30	20	T3	8	32	0.91	1500	0046	0134	0222	57605/101
560	20%	30	20	T4	9	27.5	0.65	2000	0047	0135	0223	58406/051
560	10%	30	20	T4	9	27.5	0.65	2000	0048	0136	0224	58406/151
33	20%	50	30	T1	2	6.15	2.48	700	0049	0137	0225	58107/021
33	10%	50	30	T1	2	6.15	2.48	700	0050	0138	0226	58107/121
120	20%	50	30	T2	4	11.25	1.25	1200	0051	0139	0227	58207/035
120	10%	50	30	T2	4	11.25	1.25	1200	0052	0140	0228	58207/135
270	20%	50	30	T3	8	18.5	0.91	1450	0053	0141	0229	58307/043
270	10%	50	30	T3	8	18.5	0.91	1450	0054	0142	0230	58307/143
330	20%	50	30	T4	9	19	0.77	1900	0055	0143	0231	58407/046
330	10%	50	30	T4	9	19	0.77	1900	0056	0144	0232	58407/146
27	20%	60	40	T1	3	5.1	2.51	700	0057	0145	0233	57608/007
27	10%	60	40	T1	3	5.1	2.51	700	0058	0146	0234	57608/107
100	20%	60	40	T2	4	9.5	1.26	1100	0059	0147	0235	58208/033
100	10%	60	40	T2	4	9.5	1.26	1100	0060	0148	0236	58208/133
220	20%	60	40	T3	8	15	0.91	1400	0061	0149	0237	58308/041
220	10%	60	40	T3	8	15	0.91	1400	0062	0150	0238	58308/141
270	20%	60	40	T4	9	13.5	0.67	1850	0063	0151	0239	58408/043
270	10%	60	40	T4	9	13.5	0.67	1850	0064	0152	0240	58408/143
22	20%	75	50	T1	3	4.25	2.57	600	0065	0153	0241	57617/011
22	10%	75	50	T1	3	4.25	2.57	600	0066	0154	0242	57617/111
82	20%	75	50	T2	4	7.6	1.23	1000	0067	0155	0243	57627/018
82	10%	75	50	T2	4	7.6	1.23	1000	0068	0156	0244	57627/118
180	20%	75	50	T3	9	12.2	0.90	1300	0069	0157	0245	57637/022
180	10%	75	50	T3	9	12.2	0.90	1300	0070	0158	0246	57637/122
220	20%	75	50	T4	10	18.5	1.12	1800	0071	0159	0247	57647/023
220	10%	75	50	T4	10	18.5	1.12	1800	0072	0160	0248	57647/123
10	20%	100	65	T1	3	2.25	2.99	800	0073	0161	0249	57618/007
10	10%	100	65	T1	3	2.25	2.99	800	0074	0162	0250	57618/107
39	20%	100	65	T2	5	5.2	1.77	1300	0075	0163	0251	57628/014
39	10%	100	65	T2	5	5.2	1.77	1300	0076	0164	0252	57628/114
68	20%	100	65	T3	10	5.65	1.11	1600	0077	0165	0253	57638/017
68	10%	100	65	T3	10	5.65	1.11	1600	0078	0166	0254	57638/117
120	20%	100	65	T4	12	12.5	1.38	2000	0079	0167	0255	57648/020
120	10%	100	65	T4	12	12.5	1.38	2000	0080	0168	0256	57648/120
6.8	20%	125	85	T1	3	3	5.86	700	0081	0169	0257	57619/005
6.8	10%	125	85	T1	3	3	5.86	700	0082	0170	0258	57619/105
27	20%	125	85	T2	5	3.6	1.77	1200	0083	0171	0259	57629/012
27	10%	125	85	T2	5	3.6	1.77	1200	0084	0172	0260	57629/112
47	20%	125	85	T3	10	3.95	1.12	1500	0085	0173	0261	57639/015
47	10%	125	85	T3	10	3.95	1.12	1500	0086	0174	0262	57639/115
82	20%	125	85	T4	12	8.7	1.41	1900	0087	0175	0263	57649/018
82	10%	125	85	T4	12	8.7	1.41	1900	0088	0176	0264	57649/118

* Add a letter 'H' after the 4 digit code to include the optional vibration and shock requirements (51g random vibration, 80g sinusoidal and 500g shock)

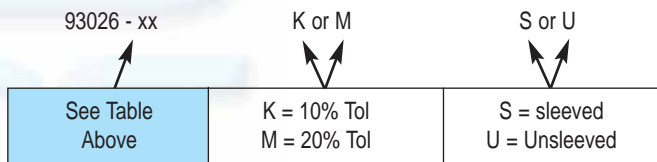
DSCC Drawing 93026 Approved Capacitors

Hi - CV Capacitors

Capacitance µF	Rated Voltage 85°C	Case Size	Max. D.C. Leakage µA + 25°C	Max. D.F. % @ 25°C 120 Hz	Max. ESR Ohms at +25°C 120 Hz	Max. Ripple Current mA rms at 85°C 40 kHz	DSCC Drwg 93026 -	Arcotronics Part Number 4021/xxxx/xxx	
								10%	20%
560	25	T2	2	35	0.83	2100	30	57624/128	57624/028
1200	25	T3	5	59	0.65	2600	31	57634/132	57634/032
1800	25	T4	6	68	0.5	3100	32	57644/134	57644/034
470	30	T2	2	30	0.85	1800	34	57606/111	57606/011
1000	30	T3	7	53	0.7	2500	35	57605/110	57605/010
1500	30	T4	12	68	0.6	3000	36	58406/155	58406/055
220	50	T2	2	15	0.9	1800	38	58207/141	58207/041
470	50	T3	3	27	0.75	2100	39	57605/107	57605/007
680	50	T4	5	36	0.7	2750	40	57607/109	57607/009
150	60	T2	2	13	1.1	1650	42	58208/137	58208/037
390	60	T3	3	27	0.9	2100	43	58308/148	58308/048
560	60	T4	5	34	0.8	2750	44	58408/151	58408/051
33	75	T1	1	6.5	2.5	1050	45		57617/013
110	75	T2	2	11	1.3	1650	46	58209/134	58209/034
330	75	T3	3	25	1.0	2100	47	57637/125	57637/025
470	75	T4	5	32	0.9	2750	48	57647/127	57647/027
68	100	T2	2	11	2.1	1650	50	57628/117	57628/017
150	100	T3	3	18	1.6	2100	51	57638/121	57638/021
220	100	T4	5	20	1.2	2750	52	57648/123	57648/023
47	125	T2	2	8.5	2.3	1650	54	57629/115	57629/015
100	125	T3	3	14	1.8	2100	55	57639/119	57639/019
150	125	T4	5	18	1.6	2750	56	57649/121	57649/021

Notes: Some parametric values shown above may be superior to DSCC 93026 drawing.
The above parts have a 3 Volt d.c. reverse voltage capability.

Ordering Instructions:



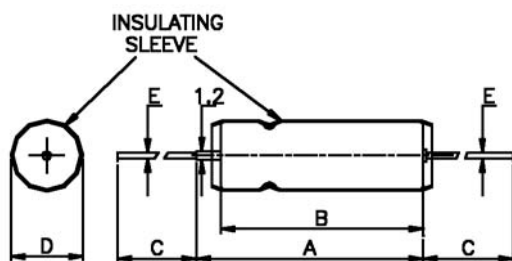
To order the above parts without 93026 approval - select the Arcotronics Pt No. from the table above to suit the required Capacitance, Voltage and Tolerance

Ultra Hi - CV Capacitors

Capacitance µF	Rated Voltage 85°C	Case Size	Max. D.C. Leakage µA + 25°C	Max. D.F. % @ 25°C 120 Hz	Max. ESR Ohms at +25°C 120 Hz	Max. Ripple Current mA rms at 85°C 40 kHz	Arcotronics Part Number 4021/xxxx/xxx	
							10%	20%
1000	60	T4	20	38	0.5	2750		57607/018
750	75	T4	20	40	0.7	2750		58409/052

TH MIL & '93026' Style

Fig. 4 Case Sizes - Outline and Dimensions



Case Size	A max	B max	C ±6.35	D max	E ±0.1
1	16	13	38.10	5.6	0.65
2	21	18	57.15	7.8	0.65
3	24	21	57.15	10.2	0.65
4	31	28	57.15	10.2	0.65

Case Size	Approximate Weight
1	2.5g
2	5.5g
3	10.5g
4	14.5g

Note: 1.2dia Anode Lead Stub must not be bent

Hi - Temperature Range

TTH - SMTTH Series

1.7μF to 2200μF
125V to 6V
-55°C to 200°C

The TTH & SMTTH series are intended for high temperature operation to a maximum of 200°C with corresponding derating above 85°C. The tantalum case design allows a reverse voltage and high ripple current capability. These series will handle up to 3 volts in reverse at 85°C and 1 volt at 200°C.

The range is of constructional compatibility with the well proven TH & SMTH range of all-tantalum tubular non-solid electrolytic capacitors, encompassing many of the values within the TH range approved to CECC 30 202 001 and CECC 30 202 005.

In general the characteristics of the units are the same as the equivalent TH unit, (see Data Sheet 5007).

It should be noted that only values appearing in this section should be subjected to a maximum of 200°C, and those appearing in the TH & SMTH must not exceed 125°C without prior consultation with Arcotronics' Applications Department.

Leakage currents at the elevated temperatures with appropriate voltage derating applied are three times the corresponding values at rated voltage and 85°C.

Table 3 - TTH / SMTTH VOLTAGE DERATING TABLES

Rated	WORKING VOLTAGE					SURGE VOLTAGE		
	85°C	125°C	150°C	175°C	200°C	85°C	125°C	150°C/175°C/200°C
6	6	4	3	3	3	6.9	4.6	*
6.3	6.3	4	3	3	3	7.2	4.6	*
8	8	5	4	4	4	9.2	5.7	*
10	10	7	6	5	5	11.5	8.0	*
15	15	10	9	8	7	17.2	11.5	*
16	16	10	9	8	8	18.5	11.5	*
25	25	15	15	13	12	28.8	17.2	*
30	30	20	18	16	15	34.5	23.0	*
40	40	25	24	22	20	46	29	*
50	50	30	30	27	25	57.5	34.5	*
60	60	40	36	33	30	69.0	46.0	*
63	63	40	36	33	30	72.0	46.0	*
75	75	50	45	41	37	86.2	57.5	*
100	100	65	60	55	50	115.0	75.0	*
125	125	85	75	68	62	144.0	98.0	*

* 150°C, 175°C & 200°C DERATED VOLTAGE IS PEAK VOLTAGE RATING NOT TO BE EXCEEDED.

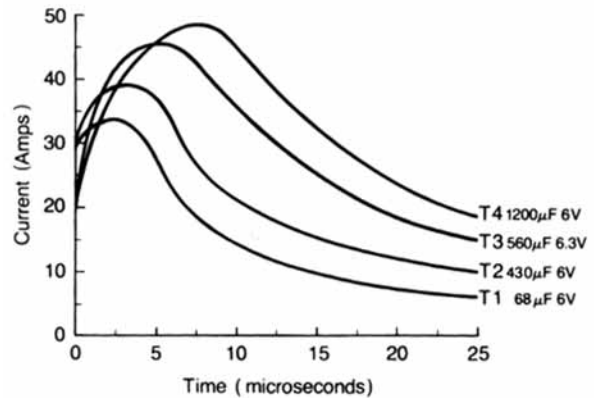
Table 4 - TTH / SMTTH RIPPLE CURRENT MULTIPLIERS

FREQUENCY	APPLIED RIPPLE CURRENT		OPERATING TEMPERATURE						
	% RATED	PEAK VOLTS	55°C	85°C	105°C	125°C	150°C	175°C	200°C
RIPPLE CURRENT MULTIPLIERS									
100Hz	100%		.60	.39					
	90%		.60	.46					
	80%		.60	.52	.35				
	70%		.60	.58	.44				
	67%		.60	.60	.46	.27	.22	.19	
	50%		.60	.46	.27	.22	.19	.13	
1kHz	100%		.72	.45					
	90%		.72	.55					
	80%		.72	.62	.42				
	70%		.72	.70	.52				
	67%		.72	.72	.55	.32	.28	.23	
	50%		.72	.72	.55	.32	.28	.23	.16
10kHz	100%		.88	.55					
	90%		.88	.67					
	80%		.88	.76	.52				
	70%		.88	.85	.64				
	67%		.88	.88	.68	.40	.34	.28	
	50%		.88	.88	.68	.40	.34	.28	.19
40kHz	100%		1.0	.63					
	90%		1.0	.77					
	80%		1.0	.87	.59				
	70%		1.0	.97	.73				
	67%		1.0	1.0	.77	.45	.37	.32	
	50%		1.0	1.0	.77	.45	.37	.32	.22
100kHz	100%		1.1	.69					
	90%		1.1	.85					
	80%		1.1	.96	.65				
	70%		1.1	1.07	.80				
	67%		1.1	1.1	.85	.50	.42	.35	
	50%		1.1	1.1	.85	.50	.42	.35	.24

In-Rush Currents

Typical curves showing the current flow during the first 25 microseconds of charging are shown below. Although a very low impedance source was used (battery), it is likely that circuit restrictions limited the current flow as currents of the order of 70 amps have been reported from the field for the TH T4 case size.

The TH range may be charged and/or discharged directly across the terminals with no protective resistor. This is a positive advantage over the tantalum 'solid' capacitors where protective resistors must be used to prevent short circuit breakdown by avalanche effect.

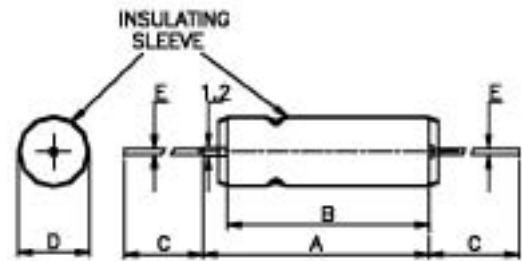


Selection Chart - 200°C Range

Rated Voltage @ 85°C	6	6.3	8	10	15	16	25	30	40	50	60	63	75	100	125
Category Voltage @ 125°C	3	3	4	5	7.5	8	12.5	15	20	25	30	31.5	37.5	50	62.5
Rated Capacitance μF	Case Size														
1.7															T1
2.5															T1
2.7															T1
3.3															T1
3.5													T1		
3.6															T1
3.9															T1
4.0										T1					
4.7														T1	T1
5.0										T1					
5.6														T1	T1
6.8															
8.0								T1							
8.2											T1			T1	
9.0														T1	T2
10							T1			T1	T1	T1			T1
11															T2
12											T1	T1			
14															T2
15					T1			T1	T1						T2
18															T2/T3
20					T1										
22							T1		T1	T1				T1	T2
25								T1		T2					T3
27					T1										T3
30	T1														T2
33					T1	T1	T1	T1						T2	T2/T3
39								T1	T1	T1				T2	T2/T3
40															T3
43								T1							T2
47					T1	T1	T1	T1							T3
50									T2	T2	T2	T2	T2	T2	T3
56					T1		T1	T1						T2	T2
60											T3				T2/T3
68	T1	T1						T1	T2	T2				T3	T3/T4
70															T4
82											T3	T2	T2	T2/T3	T4
86															T4
100															T4
110															T4
120															T4
140	T2														T4
150															T4
160	T1														T4
170															T4
180															T4
180															T4
220															T4
220															T4
250															T4
250															T4
270	T2														T4
290															T4
290															T4
300															T4
300															T4
330	T3														T4
330															T4
350															T4
350															T4
390															T4
390															T4
430															T4
430															T4
470	T2	T2													T4
470															T4
540															T4
540															T4
560	T2/T3	T2/T3													T4
560															T4
680															T4
680															T4
750															T4
750															T4
820	T2														T4
820															T4
850															T4
850															T4
1000	T4	T4													T4
1000															T4
1200	T4														T4
1200															T4
1500	T3	T3													T4
1500															T4
1800															T4
1800															T4
2200	T4	T4													T4

TTH

Fig. 5 Case Sizes - Outline and Dimensions



Note: 1.2dia Anode Lead Stub must not be bent

Dimensions (mm)

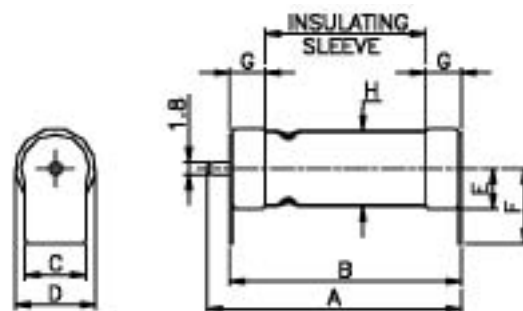
Case Size	A max	B max	C max	D max	E ±0.1
1	16	13	30	5.6	0.65
2	21	18	30	7.8	0.65
3	24	21	30	10.2	0.65
4	31	28	30	10.2	0.65

Weight

Case Size	Approximate Weight
1	2.5g
2	5.5g
3	10.5g
4	14.5g

SMTTH

Fig. 6 Case Sizes - Outline and Dimensions



Surface mount foot material - 0.25mm Nickel

Dimensions (mm)

Case Size	A max	B max	C ±0.2	D ±0.2	E ±0.2	F ±0.2	G ±0.2	H max
1	17.8	15.0	3.8	6.0	3.0	7.9	3.6	5.6
2	22.6	19.4	6.1	8.2	4.1	8.9	3.7	7.8
3	25.8	23.4	8.4	10.8	5.4	10.2	4.8	10.2
4	33.3	30.2	8.4	10.8	5.4	10.2	4.8	10.2

Weight

Case Size	Approximate Weight
1	2.5g
2	5.6g
3	11.6g
4	15.0g

TTH & SMTTH Series 200°C

Capacitance µF	Rated Voltage 85°C	Rated Voltage 200°C	Case Size	Max. D.C. Leakage µA + 25°C	Max. D.F. % @ 25°C 120 Hz	Max. ESR Ohms at +25°C 120 Hz	Max. Ripple Current mA rms at 85°C 40 kHz	TTH		SMTTH	
								Part Number Cap Tol +/- 10% 402/1/-	Part Number Cap Tol +/- 20% 402/1/-	Part Number Cap Tol +/- 10% 402/1/-	Part Number Cap Tol +/- 20% 402/1/-
30	6	3	T1	1.0	9.0	3.98	820	68101/120	68101/020	88101/120	88101/020
68	6	3	T1	1.0	15.0	2.93	960	68101/129	68101/029	88101/129	88101/029
140	6	3	T2	1.0	21.0	1.99	1200	68201/136	68201/036	88201/136	88201/036
160	6	3	T1	2.0	41.0	3.40	820	68101/138	68101/038	88101/138	88101/038
270	6	3	T2	1.0	45.0	2.21	1375	68201/143	68201/043	88201/143	88201/043
330	6	3	T3	2.0	36.0	1.45	1800	68301/146	68301/046	88301/146	88301/046
470	6	3	T2	2.0	90.0	2.54	1280	67606/110	67606/010	87606/110	87606/010
560	6	3	T2	2.0	106.0	2.51	1255	68201/151	68201/051	88201/151	88201/051
560	6	3	T3	2.0	55.0	1.30	1900	68301/151	68301/051	88301/151	88301/051
820	6	3	T2	3.0	155.0	2.51	1500	67606/106	67606/006	87606/106	87606/006
1000	6	3	T4	3.0	72.0	0.95	2390	67607/110	67607/010	87607/110	87607/010
1200	6	3	T4	3.0	90.0	1.00	2390	68401/154	68401/054	88401/154	88401/054
1500	6	3	T3	5.0	172.0	1.52	1615	68301/155	68301/055	88301/155	88301/055
2200	6	3	T4	6.0	170.0	1.03	2265	68401/157	68401/057	88401/157	88401/057
68	6.3	3	T1	1.0	15.0	2.93	960	67611/117	67611/017	87611/117	87611/017
120	6.3	3	T1	1.5	21.0	2.32	820	67611/120	67611/020	87611/120	87611/020
150	6.3	3	T1	2.0	34.0	3.01	820	67611/121	67611/021	87611/121	87611/021
220	6.3	3	T2	1.0	40.0	2.41	1370	67621/123	67621/023	87621/123	87621/023
470	6.3	3	T2	2.0	90.0	2.54	1280	67621/127	67621/027	87621/127	87621/027
560	6.3	3	T2	2.0	106.0	2.51	1255	67621/128	67621/028	87621/128	87621/028
560	6.3	3	T3	2.0	50.0	1.18	1900	67631/128	67631/028	87631/128	87631/028
1000	6.3	3	T4	3.0	72.0	0.95	2390	67641/131	67641/031	87641/131	87641/031
1500	6.3	3	T3	5.0	172.0	1.52	1615	67631/133	67631/033	87631/133	87631/033
2200	6.3	3	T4	6.0	170.0	1.02	2265	67641/135	67641/035	87641/135	87641/035
25	8	4	T1	1.0	7.5	3.98	820	68102/119	68102/019	88102/119	88102/019
56	8	4	T1	1.0	14.0	3.32	900	68102/127	68102/027	88102/127	88102/027
120	8	4	T1	2.0	32.0	3.54	820	68102/135	68102/035	88102/135	88102/035
120	8	4	T2	1.0	20.0	2.21	1230	68202/135	68202/035	88202/135	88202/035
180	8	4	T1	2.0	41.0	3.02	1000	68102/140	68102/040	88102/140	88102/040
220	8	4	T2	1.0	40.0	2.41	1300	68202/141	68202/041	88202/141	88202/041
290	8	4	T3	2.0	34.0	1.56	1745	68302/144	68302/044	88302/144	88302/044
430	8	4	T2	2.0	64.0	1.97	1230	68202/149	68202/049	88202/149	88202/049
430	8	4	T3	2.0	46.0	1.42	1825	68302/149	68302/049	88302/149	88302/049
680	8	4	T2	3.0	130.0	2.54	1500	67606/107	67606/007	87606/107	87606/007
850	8	4	T4	4.0	60.0	0.94	2460	68402/153	68402/053	88402/153	88402/053
1500	8	4	T3	5.0	170.0	1.50	1900	68302/155	68302/055	88302/155	88302/055
1800	8	4	T4	7.0	138.0	1.02	2300	67607/105	67607/005	87607/105	87607/005
20	10	5	T1	1.0	6.0	3.98	820	68103/117	68103/017	88103/117	88103/017
47	10	5	T1	1.0	13.0	3.67	855	67612/115	67612/015	87612/115	87612/015
68	10	5	T1	1.5	21.0	4.10	820	67612/117	67612/017	87612/117	87612/017
82	10	5	T1	2.0	25.0	4.04	820	67612/118	67612/018	87612/118	87612/018
100	10	5	T1	2.0	30.0	3.98	820	67612/119	67612/019	87612/119	87612/019
100	10	5	T2	1.0	15.0	1.99	1200	68203/133	68203/033	88203/133	88203/033
120	10	5	T1	2.0	29.0	3.20	900	67612/120	67612/020	87612/120	87612/020
150	10	5	T1	2.0	34.0	3.01	900	67612/121	67612/021	87612/121	87612/021
150	10	5	T2	1.0	30.0	2.65	1270	67622/121	67622/021	87622/121	87622/021
180	10	5	T2	1.0	30.0	2.21	1300	67622/122	67622/022	87622/122	87622/022
250	10	5	T3	2.0	30.0	1.59	1720	68303/142	68303/042	88303/142	88303/042
300	10	5	T2	2.0	60.0	2.65	1195	68203/145	68203/045	88203/145	88203/045
330	10	5	T2	2.0	65.0	2.61	1195	67622/125	67622/025	87622/125	87622/025
350	10	5	T2	2.0	68.0	2.58	1195	68203/147	68203/047	88203/147	88203/047
390	10	5	T2	2.0	74.0	2.52	1195	67622/126	67622/026	87622/126	87622/026
390	10	5	T3	2.0	44.0	1.50	1800	68303/148	68303/048	88303/148	88303/048
470	10	5	T3	2.0	44.0	1.24	1800	67632/127	67632/027	87632/127	87632/027
560	10	5	T2	3.0	106.0	2.51	1450	67622/128	67622/028	87622/128	87622/028
680	10	5	T4	4.0	46.0	0.90	2490	67642/129	67642/029	87642/129	87642/029
750	10	5	T4	4.0	50.0	0.88	2490	68403/152	68403/052	88403/152	88403/052
820	10	5	T4	4.0	57.0	0.92	2360	67642/130	67642/030	87642/130	87642/030
850	10	5	T3	4.0	111.0	1.73	1720	68303/153	68303/053	88303/153	88303/053
1000	10	5	T3	4.0	92.0	1.22	1720	67632/131	67632/031	87632/131	87632/031
1200	10	5	T3	5.0	137.0	1.51	1720	67632/132	67632/032	87632/132	87632/032
1500	10	5	T4	7.0	114.0	1.01	2360	67642/133	67642/033	87642/133	87642/033
1800	10	5	T4	7.0	138.0	1.02	2360	67642/134	67642/034	87642/134	87642/034
15	15	7.5	T1	1.0	5.0	4.42	780	68104/115	68104/015	88104/115	88104/015
33	15	7.5	T1	1.0	10.0	4.02	820	68104/121	68104/021	88104/121	88104/021
47	15	7.5	T1	1.5	20.0	5.64	760	68104/125	68104/025	88104/125	88104/025
56	15	7.5	T1	1.5	22.0	5.21	760	68104/127	68104/027	88104/127	88104/027
70	15	7.5	T1	2.0	25.0	4.74	900	68104/130	68104/030	88104/130	88104/030
70	15	7.5	T2	1.0	13.0	2.46	1150	68204/130	68204/030	88204/130	88204/030
100	15	7.5	T1	2.0	30.0	3.98	900	68104/133	68104/033	88104/133	88104/033
120	15	7.5	T2	1.0	25.0	2.76	1230	68204/135	68204/035	88204/135	88204/035
170	15	7.5	T3	2.0	25.0	1.95	1480	68304/139	68304/039	88304/139	88304/039
220	15	7.5	T2	2.0	42.0	2.53	1215	68204/141	68204/041	88204/141	88204/041
270	15	7.5	T2	2.0	55.0	2.70	1215	68204/143	68204/043	88204/143	88204/043
270	15	7.5	T3	2.0	43.0	2.11	1710	68304/143	68304/043	88304/143	88304/043
290	15	7.5	T2	2.0	60.0	2.74	1215	68204/144	68204/044	88204/144	88204/044
390	15	7.5	T2	3.0	74.0	2.52	1450	68204/148	68204/048	88204/148	88204/048
470	15	7.5	T4	6.0	37.0	1.04	2100	67607/117	67607/017	87607/117	87607/017
540	15	7.5	T4	6.0	40.0	0.98	2300	68404/150	68404/050	88404/150	88404/050
560	15	7.5	T4	6.0	40.0	0.95	2330	68404/151	68404/051	88404/151	88404/051
750	15	7.5	T3	6.0	95.0	1.68	1580	68304/152	68304/052	88304/152	88304/052
820	15	7.5	T3	6.0	111.0	1.80	1800	67605/104	67605/004	87605/104	87605/004
850	15	7.5	T4	8.0	95.0	1.48	2300	68404/153	68404/053	88404/153	88404/053
1000	15	7.5	T4	8.0	92.0	1.22	2300	67607/108	67607/008	87607/108	87607/008
1200	15	7.5	T4	8.0	103.0	1.14	2300	68404/154	68404/054	88404/154	88404/054

Ordering Procedure: For Kapton sleeved parts add a 'K' to the last digit of the Part No. and for unsleeved parts add a 'U'

TTH & SMTTH Series 200°C

Capacitance µF	Rated Voltage 85°C	Rated Voltage 200°C	Case Size	Max. D.C. Leakage µA + 25°C	Max. D.F. % @ 25°C 120 Hz	Max. ESR Ohms at +25°C 120 Hz	Max. Ripple Current mA rms at 85°C 40 kHz	TTH		SMTTH	
								Part Number Cap Tol +/- 10% 402/1/-	Part Number Cap Tol +/- 20% 402/1/-	Part Number Cap Tol +/- 10% 402/1/-	Part Number Cap Tol +/- 20% 402/1/-
33	16	8	T1	1.0	10.0	4.02	820	67613/113	67613/013	87613/113	87613/013
47	16	8	T1	1.5	20.0	5.64	760	67613/115	67613/015	87613/115	87613/015
56	16	8	T1	1.5	22.0	5.21	760	67613/116	67613/016	87613/116	87613/016
120	16	8	T2	1.0	25.0	2.76	1230	67623/120	67623/020	87623/120	87623/020
220	16	8	T2	2.0	42.0	2.53	1215	67623/123	67623/023	87623/123	87623/023
270	16	8	T2	2.0	55.0	2.70	1215	67623/124	67623/024	87623/124	87623/024
330	16	8	T3	2.0	40.0	1.61	1760	67633/125	67633/025	87633/125	87633/025
470	16	8	T4	3.0	37.0	1.04	2100	67643/127	67643/027	87643/127	87643/027
560	16	8	T4	3.0	40.0	0.95	2300	67643/128	67643/028	87643/128	87643/028
680	16	8	T3	5.0	80.0	1.56	1580	67633/129	67633/029	87633/129	87633/029
820	16	8	T3	6.0	95.0	1.54	1580	67633/130	67633/030	87633/130	87633/030
1000	16	8	T4	8.0	92.0	1.22	2300	67643/131	67643/031	87643/131	87643/031
1200	16	8	T4	8.0	103.0	1.14	2300	67643/132	67643/032	87643/132	87643/032
10	25	12.5	T1	1.0	4.0	5.31	715	68105/112	68105/012	88105/112	88105/012
22	25	12.5	T1	1.0	7.0	4.22	800	67614/111	67614/011	87614/111	87614/011
27	25	12.5	T1	1.5	11.0	5.40	715	67614/112	67614/012	87614/112	87614/012
33	25	12.5	T1	1.5	13.0	5.22	715	67614/113	67614/013	87614/113	87614/013
39	25	12.5	T1	2.0	16.0	5.44	715	67614/114	67614/014	87614/114	87614/014
43	25	12.5	T1	2.0	18.0	5.55	715	68105/124	68105/024	88105/124	88105/024
47	25	12.5	T1	2.0	20.0	5.64	715	67614/115	67614/015	87614/115	87614/015
50	25	12.5	T2	1.0	11.0	2.92	1130	68205/126	68205/026	88205/126	88205/026
56	25	12.5	T1	2.0	22.0	5.21	850	68105/127	68105/027	88105/127	88105/027
68	25	12.5	T1	2.0	22.0	4.29	850	67614/117	67614/017	87614/117	87614/017
100	25	12.5	T2	1.0	21.0	2.78	1215	67624/119	67624/019	87624/119	87624/019
120	25	12.5	T2	2.0	21.0	2.32	1450	68205/135	68205/035	88205/135	88205/035
120	25	12.5	T3	2.0	21.0	2.32	1420	68305/135	68305/035	88305/135	88305/035
150	25	12.5	T2	2.0	35.0	3.09	1130	67624/121	67624/021	87624/121	87624/021
160	25	12.5	T2	2.0	34.0	2.82	1130	68205/138	68205/038	88205/138	88205/038
180	25	12.5	T2	3.0	35.0	2.58	1130	67624/122	67624/022	87624/122	87624/022
180	25	12.5	T3	2.0	28.0	2.06	1530	68305/140	68305/040	88305/140	88305/040
220	25	12.5	T3	2.0	35.0	2.11	1615	67634/123	67634/023	87634/123	87634/023
270	25	12.5	T2	3.0	55.0	2.70	1400	68205/143	68205/043	88205/143	88205/043
330	25	12.5	T4	7.0	30.0	1.21	1860	67644/125	67644/025	87644/125	87644/025
350	25	12.5	T4	7.0	35.0	1.33	2250	68405/147	68405/047	88405/147	88405/047
390	25	12.5	T3	7.0	48.0	1.63	1400	67634/126	67634/026	87634/126	87634/026
390	25	12.5	T4	7.0	35.0	1.19	2025	67644/126	67644/026	87644/126	87644/026
470	25	12.5	T3	7.0	48.0	1.35	1400	67634/127	67634/027	87634/127	87634/027
560	25	12.5	T3	7.0	60.0	1.42	1400	67634/128	67634/028	87634/128	87634/028
680	25	12.5	T4	8.0	60.0	1.17	1940	67644/129	67644/029	87644/129	87644/029
820	25	12.5	T4	8.0	82.0	1.33	1860	67644/130	67644/030	87644/130	87644/030
850	25	12.5	T4	8.0	95.0	1.48	1970	68405/153	68405/053	88405/153	88405/053
8	30	15	T1	1.0	4.0	6.64	640	68106/109	68106/009	88106/109	88106/009
15	30	15	T1	1.0	7.0	6.19	660	68106/115	68106/015	88106/115	88106/015
25	30	15	T1	1.5	11.0	5.83	640	68106/119	68106/019	88106/119	88106/019
33	30	15	T1	2.0	12.0	4.82	640	68106/121	68106/021	88106/121	88106/021
39	30	15	T1	2.0	16.0	5.44	715	68106/122	68106/022	88106/122	88106/022
40	30	15	T2	1.0	10.0	3.32	1065	68206/123	68206/023	88206/123	88206/023
47	30	15	T1	2.0	20.0	5.64	715	68106/125	68106/025	88106/125	88106/025
56	30	15	T1	2.0	22.0	5.21	800	68106/127	68106/027	88106/127	88106/027
68	30	15	T2	1.0	15.0	2.93	1215	68206/129	68206/029	88206/129	88206/029
100	30	15	T3	2.0	17.0	2.26	1480	68306/133	68306/033	88306/133	88306/033
120	30	15	T2	2.0	30.0	3.32	1185	68206/134	68206/034	88206/134	88206/034
150	30	15	T2	2.0	32.0	2.83	1185	68206/137	68206/037	88206/137	88206/037
150	30	15	T3	2.0	23.0	2.03	1525	68306/137	68306/037	88306/137	88306/037
170	30	15	T2	2.0	34.0	2.65	1185	68206/139	68206/039	88206/139	88206/039
220	30	15	T2	3.0	42.0	2.53	1200	68206/141	68206/041	88206/141	88206/041
300	30	15	T3	6.0	43.0	1.90	1560	68306/145	68306/045	88306/145	88306/045
300	30	15	T4	8.0	30.0	1.33	2100	68406/145	68406/045	88406/145	88406/045
330	30	15	T3	6.0	45.0	1.81	1370	68306/146	68306/046	88306/146	88306/046
350	30	15	T3	8.0	48.0	1.82	1480	68306/147	68306/047	88306/147	88306/047
390	30	15	T3	8.0	55.0	1.87	1480	68306/148	68306/048	88306/148	88306/048
430	30	15	T3	8.0	60.0	1.85	1480	68306/149	68306/049	88306/149	88306/049
470	30	15	T3	8.0	64.0	1.81	1500	67605/101	67605/001	87605/101	87605/001
560	30	15	T4	9.0	40.0	0.95	1950	68406/151	68406/051	88406/151	88406/051
15	40	20	T1	1.0	7.0	6.19	660	67615/109	67615/009	87615/109	87615/009
18	40	20	T1	1.5	10.0	7.37	580	67615/110	67615/010	87615/110	87615/010
22	40	20	T1	1.5	11.0	6.63	580	67615/111	67615/011	87615/111	87615/011
39	40	20	T1	2.0	18.0	6.12	715	67615/114	67615/014	87615/114	87615/014
68	40	20	T2	1.0	15.0	2.93	1285	67625/117	67625/017	87625/117	87625/017
100	40	20	T2	2.0	25.0	3.32	1285	67625/119	67625/019	87625/119	87625/019
120	40	20	T2	2.0	30.0	3.32	1240	67625/120	67625/020	87625/120	87625/020
150	40	20	T3	2.0	23.0	2.03	1525	67635/121	67635/021	87635/121	87635/021
220	40	20	T4	2.0	23.0	1.39	1900	67645/123	67645/023	87645/123	87645/023
270	40	20	T3	7.0	37.0	1.82	1370	67635/124	67635/024	87635/124	87635/024
330	40	20	T3	8.0	43.0	1.73	1370	67635/125	67635/025	87635/125	87635/025
390	40	20	T4	8.0	43.0	1.46	1900	67645/126	67645/026	87645/126	87645/026
470	40	20	T4	9.0	45.0	1.27	1900	67645/127	67645/027	87645/127	87645/027

Ordering Procedure: For Kapton sleeved parts add a 'K' to the last digit of the Part No. and for unsleeved parts add a 'U'

TTH & SMTTH Series 200°C

Capacitance µF	Rated Voltage 85°C	Rated Voltage 200°C	Case Size	Max. D.C. Leakage µA + 25°C	Max. D.F. % @ 25°C 120 Hz	Max. ESR Ohms at +25°C 120 Hz	Max. Ripple Current mA rms at 85°C 40 kHz	TTH		SMTTH	
								Part Number Cap Tol +/- 10% 402/1/-	Part Number Cap Tol +/- 20% 402/1/-	Part Number Cap Tol +/- 10% 402/1/-	Part Number Cap Tol +/- 20% 402/1/-
5	50	25	T1	1.0	3.0	7.96	580	68107/107	68107/007	88107/107	88107/007
10	50	25	T1	1.0	4.0	5.31	640	68107/112	68107/012	88107/112	88107/012
18	50	25	T1	1.5	10.0	7.37	580	68107/116	68107/016	88107/116	88107/016
22	50	25	T1	2.0	11.0	6.63	580	68107/118	68107/018	88107/118	88107/018
25	50	25	T2	1.0	8.0	4.25	1065	68207/119	68207/019	88207/119	88207/019
33	50	25	T1	2.0	12.3	4.95	700	68107/121	68107/021	88107/121	88107/021
47	50	25	T2	1.0	13.0	3.67	1215	68207/125	68207/025	88207/125	88207/025
60	50	25	T3	2.0	12.0	2.65	1285	68307/128	68307/028	88307/128	88307/028
82	50	25	T3	2.0	15.0	2.43	1460	68307/131	68307/031	88307/131	88307/031
100	50	25	T2	3.0	25.0	3.32	1150	68207/133	68207/033	88207/133	88207/033
120	50	25	T2	4.0	22.5	2.49	1200	68207/135	68207/035	88207/135	88207/035
160	50	25	T4	8.0	17.0	1.41	2040	68407/138	68407/038	88407/138	88407/038
270	50	25	T3	8.0	37.0	1.82	1370	68307/143	68307/043	88307/143	88307/043
330	50	25	T4	9.0	38.0	1.53	1900	68407/146	68407/046	88407/146	88407/046
350	50	25	T4	9.0	40.0	1.52	1900	68407/147	68407/047	88407/147	88407/047
390	50	25	T4	9.0	43.0	1.46	1900	68407/148	68407/048	88407/148	88407/048
430	50	25	T4	10.0	45.0	1.39	1900	68407/149	68407/049	88407/149	88407/049
4	60	30	T1	1.0	2.8	9.29	525	68108/105	68108/005	88108/105	88108/005
8.2	60	30	T1	1.0	4.0	6.47	625	68108/110	68108/010	88108/110	88108/010
10	60	30	T1	1.0	4.0	5.30	570	68108/112	68108/012	88108/112	88108/012
12	60	30	T1	3.0	7.0	7.74	700	67608/110	67608/010	87608/110	87608/010
15	60	30	T1	3.0	8.0	7.10	700	68108/115	68108/015	88108/115	88108/015
18	60	30	T1	2.0	10.0	7.37	700	68108/116	68108/016	88108/116	88108/016
20	60	30	T2	1.0	7.0	4.64	1030	68208/117	68208/017	88208/117	88208/017
27	60	30	T1	3.0	10.2	5.00	700	67608/107	67608/007	87608/107	87608/007
39	60	30	T2	1.0	12.0	4.08	1185	68208/122	68208/022	88208/122	88208/022
47	60	30	T2	4.0	13.0	3.67	1150	68208/125	68208/025	88208/125	88208/025
50	60	30	T3	2.0	10.0	2.65	1340	68308/126	68308/026	88308/126	88308/026
56	60	30	T2	4.0	18.0	4.26	1150	68208/127	68208/027	88208/127	88208/027
68	60	30	T3	2.0	13.0	2.54	1390	68308/129	68308/029	88308/129	88308/029
82	60	30	T2	4.0	22.0	3.56	1150	68208/131	68208/031	88208/131	88208/031
100	60	30	T2	4.0	19.0	2.52	1100	68208/133	68208/033	88208/133	88208/033
100	60	30	T3	2.0	18.0	2.39	1420	68308/133	68308/033	88308/133	88308/033
110	60	30	T2	2.0	11.0	1.33	1650	68208/134	68208/034	88208/134	88208/034
120	60	30	T3	8.0	20.0	2.21	1420	68308/135	68308/035	88308/135	88308/035
140	60	30	T4	8.0	16.0	1.52	1990	68408/136	68408/036	88408/136	88408/036
150	60	30	T4	8.0	17.0	1.50	1865	68408/137	68408/037	88408/137	88408/037
220	60	30	T3	8.0	37.0	2.23	1340	68308/141	68308/041	88308/141	88308/041
270	60	30	T4	9.0	26.0	1.28	1850	68408/143	68408/043	88408/143	88408/043
330	60	30	T4	10.0	32.0	1.29	1850	68408/146	68408/046	88408/146	88408/046
10	63	31.5	T1	1.0	4.0	5.30	570	67616/107	67616/007	87616/107	87616/007
12	63	31.5	T1	2.0	7.0	7.74	570	67616/108	67616/008	87616/108	87616/008
15	63	31.5	T1	2.0	8.0	7.07	560	67616/109	67616/009	87616/109	87616/009
27	63	31.5	T1	2.0	10.2	5.01	700	67616/112	67616/012	87616/112	87616/012
47	63	31.5	T2	1.0	13.0	3.67	1150	67626/115	67626/015	87626/115	87626/015
56	63	31.5	T2	2.0	18.0	4.26	1150	67626/116	67626/016	87626/116	87626/016
82	63	31.5	T2	2.0	22.0	3.56	1150	67626/118	67626/018	87626/118	87626/018
100	63	31.5	T3	2.0	18.0	2.39	1420	67636/119	67636/019	87636/119	87636/019
120	63	31.5	T3	3.0	20.0	2.21	1420	67636/120	67636/020	87636/120	87636/020
150	63	31.5	T4	3.0	17.0	1.50	1865	67646/121	67646/021	87646/121	87646/021
220	63	31.5	T3	8.0	37.0	2.23	1340	67636/123	67636/023	87636/123	87636/023
270	63	31.5	T4	9.0	26.0	1.28	1850	67646/124	67646/024	87646/124	87646/024
330	63	31.5	T4	10.0	32.0	1.29	1850	67646/125	67646/025	87646/125	87646/025
3.5	75	37.5	T1	1.0	2.5	9.5	525	68109/103	68109/003	88109/103	88109/003
6.8	75	37.5	T1	1.0	3.0	5.85	610	67617/105	67617/005	87617/105	87617/005
8.2	75	37.5	T1	3.0	6.0	9.70	610	67617/106	67617/006	87617/106	87617/006
9	75	37.5	T1	2.0	6.0	8.84	570	68109/111	68109/011	88109/111	88109/011
15	75	37.5	T1	2.0	8.0	7.07	600	68109/115	68109/015	88109/115	88109/015
15	75	37.5	T2	1.0	6.0	5.31	1000	68209/115	68209/015	88209/115	88209/015
22	75	37.5	T1	3.0	8.5	5.13	600	67617/111	67617/011	87617/111	87617/011
33	75	37.5	T2	1.0	10.0	4.02	1080	67627/113	67627/013	87627/113	87627/013
40	75	37.5	T3	2.0	9.0	2.99	1290	68309/123	68309/023	88309/123	88309/023
43	75	37.5	T2	2.0	15.0	4.63	1050	68209/124	68209/024	88209/124	88209/024
47	75	37.5	T2	4.0	15.0	4.23	1050	67627/115	67627/015	87627/115	87627/015
56	75	37.5	T2	2.0	18.0	4.26	1050	68209/127	68209/027	88209/127	88209/027
56	75	37.5	T3	2.0	11.0	2.61	1400	68309/127	68309/027	88309/127	88309/027
68	75	37.5	T2	4.0	21.0	4.10	1050	67627/117	67627/017	87627/117	87627/017
68	75	37.5	T3	2.0	13.0	2.54	1520	67637/117	67637/017	87637/117	87637/017
82	75	37.5	T2	4.0	15.2	2.46	1000	67627/118	67627/018	87627/118	87627/018
82	75	37.5	T3	2.0	15.0	2.43	1335	67637/118	67637/018	87637/118	87637/018
100	75	37.5	T3	8.0	19.0	2.52	1335	67637/119	67637/019	87637/119	87637/019
110	75	37.5	T2	2.0	11.0	1.33	1650	68209/134	68209/034	88209/134	88209/034
110	75	37.5	T4	9.0	11.0	1.33	1990	68409/134	68409/034	88409/134	88409/034
120	75	37.5	T4	9.0	12.0	1.33	1915	67647/120	67647/020	87647/120	87647/020
150	75	37.5	T3	9.0	25.0	2.21	1335	67637/121	67637/021	87637/121	87637/021
150	75	37.5	T4	9.0	17.0	1.5	1915	67647/121	67647/021	87647/121	87647/021
180	75	37.5	T3	9.0	28.0	2.06	1335	67637/122	67637/022	87637/122	87637/022
220	75	37.5	T4	10.0	37.0	2.23	1850	67647/123	67647/023	87647/123	87647/023
250	75	37.5	T4	10.0	40.0	2.12	1850	68409/142	68409/042	88409/142	88409/042

Ordering Procedure: For Kapton sleeved parts add a 'K' to the last digit of the Part No. and for unsleeved parts add a 'U'

TTH & SMTTH Series 200°C

Capacitance µF	Rated Voltage 85°C	Rated Voltage 200°C	Case Size	Max. D.C. Leakage µA + 25°C	Max. D.F. % @ 25°C 120 Hz	Max. ESR Ohms at +25°C 120 Hz	Max. Ripple Current mA rms at 85°C 40 kHz	TTH		SMTTH	
								Part Number Cap Tol +/- 10% 402/1/-	Part Number Cap Tol +/- 20% 402/1/-	Part Number Cap Tol +/- 10% 402/1/-	Part Number Cap Tol +/- 20% 402/1/-
2.5	100	50	T1	1.0	2.0	10.62	505	67608/103	67608/003	87608/103	87608/003
4.7	100	50	T1	1.0	3.0	8.47	565	67618/103	67618/003	87618/103	87618/003
5.6	100	50	T1	2.0	6.0	14.21	530	67618/104	67618/004	87618/104	87618/004
10	100	50	T1	3.0	4.5	5.97	800	67618/107	67618/007	87618/107	87618/007
11	100	50	T2	1.0	5.0	6.03	835	67606/105	67606/005	87606/105	87606/005
22	100	50	T2	1.0	8.0	4.82	1065	67628/111	67628/011	87628/111	87628/011
30	100	50	T2	3.0	10.0	4.42	1065	68210/120	68210/020	88210/120	88210/020
30	100	50	T3	2.0	7.0	3.10	1200	68310/120	68310/020	88310/120	88310/020
33	100	50	T2	3.0	14.0	5.63	1065	67628/113	67628/013	87628/113	87628/013
33	100	50	T3	2.0	7.0	2.81	1200	67638/113	67638/013	87638/113	87638/013
39	100	50	T2	5.0	10.0	3.4	1065	67628/114	67628/014	87628/114	87628/014
39	100	50	T3	2.0	8.0	2.72	1280	67638/114	67638/014	87638/114	87638/014
43	100	50	T3	2.0	8.0	2.47	1390	68310/124	68310/024	88310/124	88310/024
47	100	50	T3	4.0	9.0	2.54	1390	67638/115	67638/015	87638/115	87638/015
56	100	50	T3	8.0	11.0	2.6	1335	67638/116	67638/016	87638/116	87638/016
68	100	50	T3	10.0	15.0	2.93	1335	67638/117	67638/017	87638/117	87638/017
68	100	50	T4	3.0	8.0	1.56	1860	67648/117	67648/017	87648/117	87648/017
82	100	50	T4	3.0	10.0	1.62	1860	67648/118	67648/018	87648/118	87648/018
86	100	50	T4	9.0	10.0	1.54	1860	68410/132	68410/032	88410/132	88410/032
100	100	50	T4	3.0	11.0	1.46	1860	67648/119	67648/019	87648/119	87648/019
120	100	50	T4	12.0	25.0	2.76	2000	67648/120	67648/020	87648/120	87648/020
220	100	50	T4	12.0	30.0	1.81	2000	67648/123	67648/023	87648/123	87648/023
1.7	125	62.5	T1	1.0	2.0	15.61	415	67608/106	67608/006	87608/106	87608/006
2.7	125	62.5	T1	1.0	3.0	14.73	450	67619/199	67619/099	87619/199	87619/099
3.3	125	62.5	T1	1.0	3.0	12.06	495	67619/101	67619/001	87619/101	87619/001
3.6	125	62.5	T1	1.0	3.0	11.05	495	68111/104	68111/004	88111/104	88111/004
3.9	125	62.5	T1	2.0	3.5	11.90	495	67619/102	67619/002	87619/102	87619/002
4.7	125	62.5	T1	2.0	4.0	11.29	4.95	67619/103	67619/003	87619/103	87619/003
5.6	125	62.5	T1	3.0	6.0	14.21	530	67619/104	67619/004	87619/104	87619/004
9	125	62.5	T2	1.0	5.0	7.37	755	68211/111	68211/011	88211/111	88211/011
14	125	62.5	T2	1.0	6.0	5.69	1050	68211/114	68211/014	88211/114	88211/014
15	125	62.5	T2	1.0	6.0	5.30	1050	67629/109	67629/009	87629/109	87629/009
18	125	62.5	T2	3.0	8.0	5.89	1065	67629/110	67629/010	87629/110	87629/010
18	125	62.5	T3	2.0	5.0	3.69	1130	67639/110	67639/010	87639/110	87639/010
22	125	62.5	T3	2.0	6.0	3.62	1335	67639/111	67639/011	87639/111	87639/011
25	125	62.5	T3	2.0	6.0	3.18	1335	68311/119	68311/019	88311/119	88311/019
27	125	62.5	T2	5.0	7.2	3.54	1200	67629/112	67629/012	87629/112	87629/012
39	125	62.5	T3	8.0	8.0	2.72	1280	67639/114	67639/014	87639/114	87639/014
47	125	62.5	T3	10.0	9.0	2.54	1280	67639/115	67639/015	87639/115	87639/015
50	125	62.5	T2	4.0	10.0	2.65	1200	68211/126	68211/026	88211/126	88211/026
56	125	62.5	T4	10.0	6.0	1.42	1860	68411/127	68411/027	88411/127	88411/027
68	125	62.5	T4	12.0	8.0	1.56	1860	67649/117	67649/017	87649/117	87649/017
82	125	62.5	T4	12.0	17.4	2.82	1900	67649/118	67649/018	87649/118	87649/018
150	125	62.5	T4	12.0	18.0	1.6	2000	67649/121	67649/021	87649/121	87649/021

Ordering Procedure: For Kapton sleeved parts add a 'K' to the last digit of the Part No. and for unsleeved parts add a 'U'

TH Range - 150Volt Operation

The range is available in the four standard tubular case sizes shown below, and with very similar parameters they make an ideal extension to the established and widely specified Arcotronics TH range

In addition to higher voltage single component application advantages, these new products provide cost-saving benefits for module configurations, where fewer series capacitors are required to meet the high voltage requirements.

These components are also superior replacements for the older style silver cased 150 Volt devices, and their all-tantalum construction means the well known silver migration problems inherent with silver cased tantalum capacitors are eliminated.

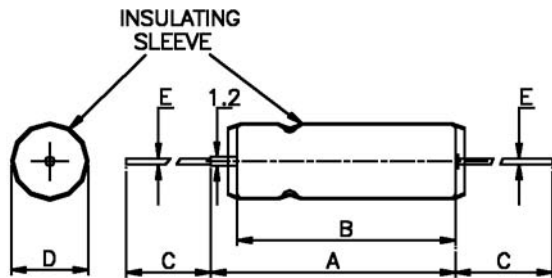
Maximum Values

Capacitance μF	Rated Voltage 85°C	Category Voltage 125°C	Case Size	Dissipation Factor %	ESR Ω	Impedance		Leakage Current		Capacitance Change %		RMS Ripple Current 85°C 40KHz mA	Part Number	
						-55°C 100 Hz Ω	25°C 100 Hz Ω	-25°C	85 to 125°C	-55°C %	125°C %		Cap Tol +/- 10% 402/1/-	Cap Tol +/- 20% 402/1/
2.5	150	100	T1	3	13.3	780	5	1	3	-16	8	450	57608/108	57608/008
3.3	150	100	T1	3	11.1	600	5	1	3	-16	8	495	57608/109	57608/009
14	150	100	T2	6	5.0	167	5	2	10	-16	8	1050	57606/108	57606/008
18	150	100	T2	8	3.7	133	5	2	10	-16	8	1065	57606/109	57606/009
25	150	100	T3	6	2.6	93	5	2	20	-16	8	1335	57605/108	57605/008
47	150	100	T3	9	2.8	70	5	2	20	-23	10	1280	57605/109	57605/009
56	150	100	T4	6	1.5	47	1	3	30	-25	15	1860	57607/115	57607/015
82	150	100	T4	10	1.5	39	1	3	30	-24	18	1860	57607/116	57607/016

Note: For Surface Mount - SMTH Versions Replace the First Digit ('5') of the Above Pt No.'s With a '7'

TH

Fig. 7 Case Sizes - Outline and Dimensions



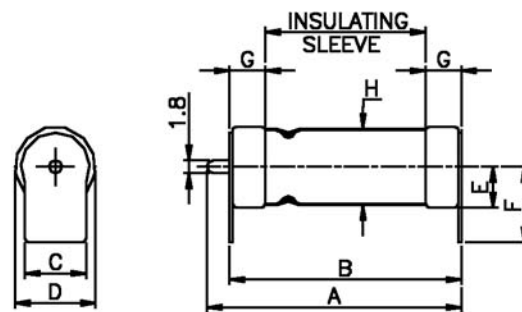
Note: 1.2dia Anode Lead Stub must not be bent

Case Size	A max	B max	C min	D max	E ± 0.1
1	16	13	30	5.6	0.65
2	21	18	30	7.8	0.65
3	24	21	30	10.2	0.65
4	31	28	30	10.2	0.65

Case Size	Approximate Weight
1	2.5g
2	5.5g
3	10.5g
4	14.5g

SMTH

Fig. 8 Case Sizes - Outline and Dimensions



Surface most foot material - 0.25mm Nickel

Case Size	A max	B max	C ± 0.2	D ± 0.2	E ± 0.2	F ± 0.2	G ± 0.2	H max
1	17.8	15.0	3.8	6.0	3.0	7.9	3.6	5.6
2	22.6	19.4	6.1	8.2	4.1	8.9	3.7	7.8
3	25.8	23.4	8.4	10.8	5.4	10.2	4.8	10.2
4	33.3	30.2	8.4	10.8	5.4	10.2	4.8	10.2

Case Size	Approximate Weight
1	2.5g
2	5.6g
3	11.6g
4	15.0g

Modular Concepts

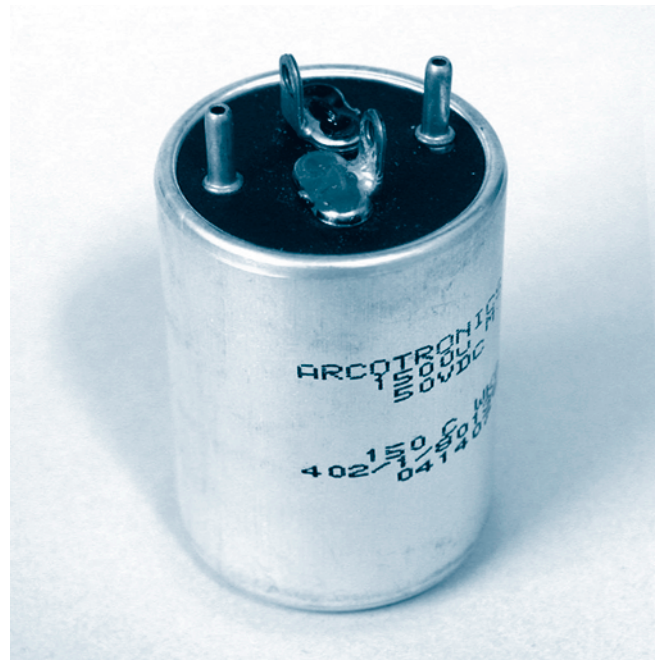
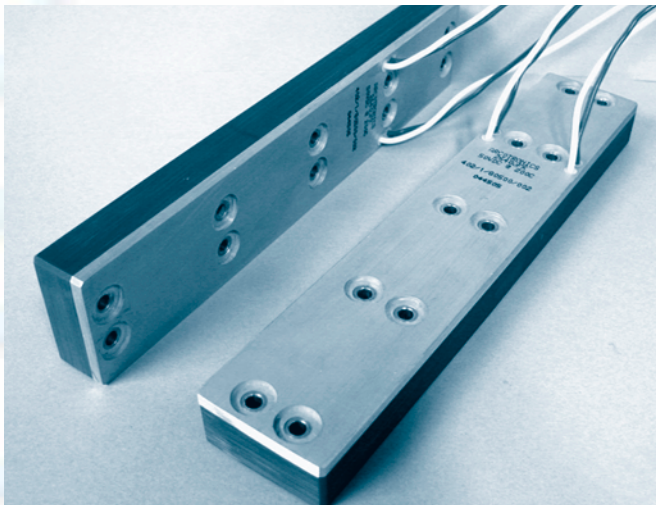
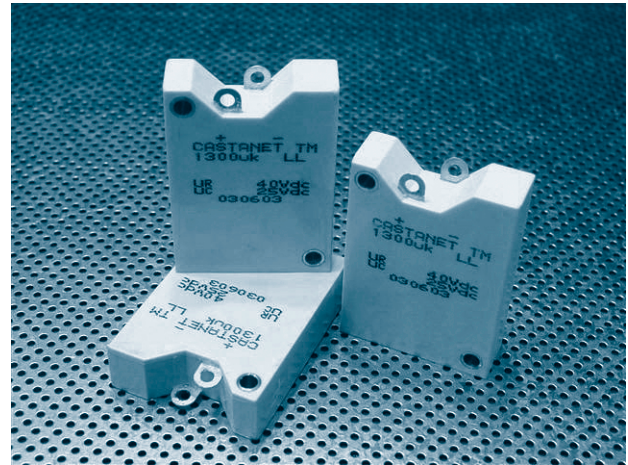
Standard

The TM range of standard modules incorporating our tubular capacitors is a well established range for military and aerospace applications. These are available from 220 μ F to 6000 μ F.

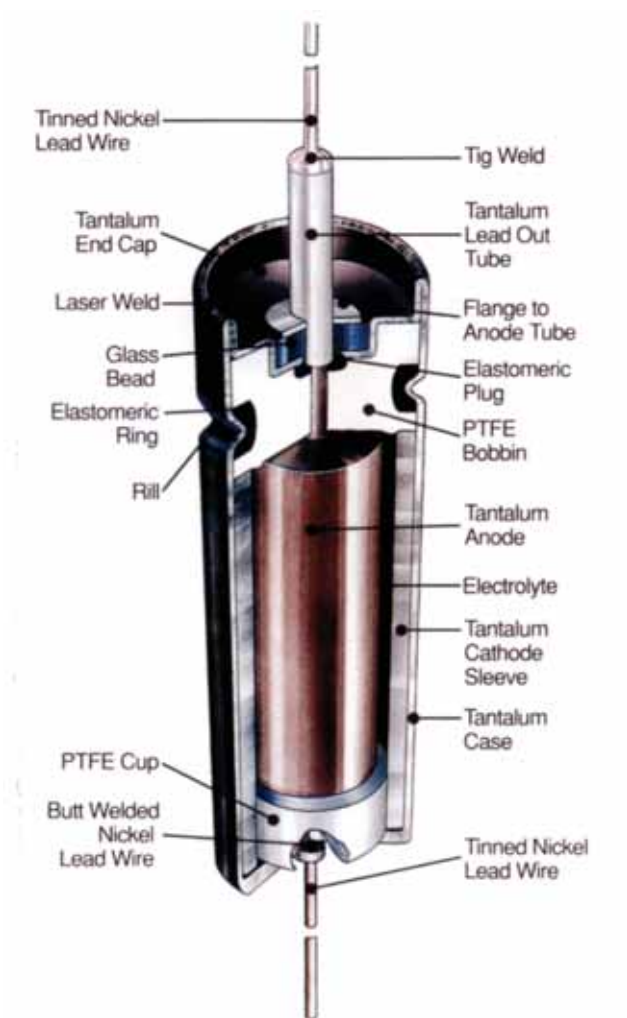
A separate Data Sheet (Publication No. 5011) providing full technical and ordering information is available on request.

Custom

Custom designs are offered to customers unable to use the standard TM series. These concepts have also proven to be extremely popular for high temperature down-hole drilling applications where space and available shape restrictions enable equipment designers to achieve higher levels of capacitance and voltage than otherwise possible with single axial or surface mount components.



TH and TTH construction



For more information on new Wet Tantalum capacitor developments and EMC/RFI filter products please visit our web site www.arcotronics.ltd.uk



Worldwide Sales Offices

FRANCE

ARCOTRONICS FRANCE Sarl
 Impasse de la Noisette
 Bat D Centre Post
 Evolic CE443
 91374 Verrieres le Buisson
 Tel: +33 1 69536400
 Fax: +33 1 69536409
 Email: info@arcotronics.fr

GERMANY

ARCOTRONICS BAUELMENTE GmbH
 Büro Seukendorf
 Grasweg 26
 D-90556 Seukendorf
 Tel: +49 (0)911 756184
 Fax: +49 (0)911 7520426
 Email:
 admin: pavcek-glas@arcotronics.de
 technical and sales: contact@arcotronics.de

GREAT BRITAIN

ARCOTRONICS Ltd.
 Wood Burcote Trading Estate
 Burcote Road
 Towcester
 Northants
 NN12 6LX
 Tel: +44 (0)1327 351515
 Fax: +44 (0)1327 353761
 Email: twc.sales@arcouk.com

ITALY

ARCOTRONICS ITALIA SpA
 Via San Lorenzo, 1/7
 40037 Sasso Marconi BO
 Tel: +39 051 939111
 Fax: +39 051 840684
 Email: arcoven@arcotronics.com

JAPAN

NISSEI ELECTRIC INDUSTRY Co. Ltd.
 8F Yaesu Dai - 7 Nagaoka Bldg 1-12-11
 Minato, Chuo-ku, Tokyo 104-0043
 Tel: +81 33537 6040
 Fax: +81 33537 6041
 Email: oversea@nissai-denshi.co.jp

USA

ARCOTRONICS AMERICA INC.
 105 W Adams St.
 Suite 2950
 Chicago IL 60603
 Tel: +1 312-568-4405
 Fax: +1 312-568-4414
 Email: info@arcotronics.us



**Worldwide Agents and Distributors
 in the following countries**

- AUSTRALIA
- AUSTRIA
- BELGIUM
- CANADA
- DENMARK
- FINLAND
- GREAT BRITAIN
- GREECE
- IRELAND
- ISRAEL
- KOREA
- NETHERLANDS
- NORWAY
- POLAND
- PORTUGAL
- SCOTLAND
- SPAIN
- SWEDEN
- SWITZERLAND
- TURKEY

For specific distributor information
 please contact the UK office.



ARCOTRONICS

HEAD OFFICE & MANUFACTURING

ARCOTRONICS LIMITED, Wood Burcote Trading Estate, Burcote Road, Towcester, Northants NN12 6LX. UK
 Tel: +44 (0)1327 351515 Fax: +44 (0)1327 353761 Web: www.arcotronics.ltd.uk Email: twc.sales@arcouk.com