

### Advantages

- Reduced downtime
- Reduced setup costs
- Secure and accurate sensor fastening

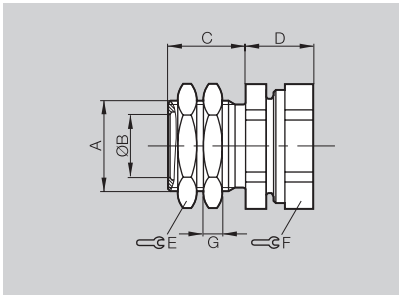
Balluff provides a range of mounting solutions to decrease the need to adjust sensors for correct sensing range to reduce downtime and setup costs when sensors are replaced.

### Initial Sensor Installation

Sensor is assembled into the Prox Mount tube and locked into place with a plastic compression ring and metal nut. The Prox Mount and sensor assembly is then mounted and adjusted as with any tubular sensor, but the Prox Mount will remain in place on future sensor replacement tasks.

### Quick Sensor Replacement

Simply loosen the metal nut, allowing the sensor to be quickly removed. Install the new sensor into the Prox Mount mounting tube and lock into place with the compression ring and nut. A positive stop designed into the Prox Mount tube ensures effortless repeatable sensor positioning.



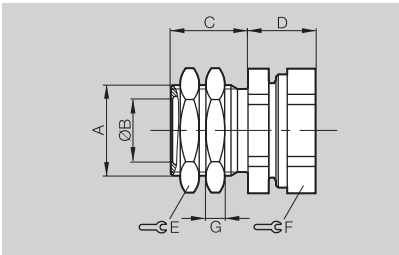
### Prox Mounts with positive stop for sensors with thread length 30 mm

	A	ØB	C	D max.	E	F	G
BES 05.0-KH-2S*	M5x0.5	5	13	11	13	13	4
BES 08.0-KH-2S*	M12x1 <sup>†</sup>	8	17.5	14.5	17	17	4
BES 12.0-KH-2S*	M16x1	12	19.5	14.5	22	22	4
BES 12.0-KH-2S*-M18	M18x1 <sup>†</sup>	12	19.5	14.5	22	22	4
BES 18.0-KH-2S*	M24x1.5	18	20.5	15.5	30	30	5
BES 30.0-KH-2S*	M36x1.5	30	20.5	15.5	41	41	6

### Material: CuZn, nickel plated

\* Also available for welding environments (PTFE coated). Add /W to ordering code.  
Ordering example: BES 12.0-KH-2S/W or BES 12.0-KH-2S/W-M18

<sup>†</sup> Allows smaller diameter sensor to replace larger when installed in this prox mount.

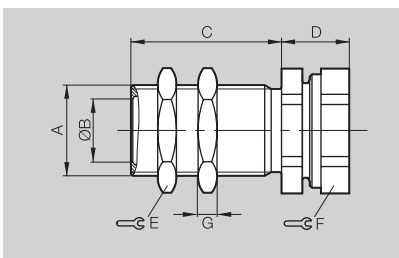


### Prox Mounts with positive stop for sensors with thread length 30 mm

	A	ØB	C	D max.	E	F	G
BES 08.0-KH-11SW	M12x1 <sup>†</sup>	8	17.5	15.5	17	17	4
BES 12.0-KH-11SW	M16x1	12	21	15.5	22	22	4
BES 12.0-KH-11S/W-M18	M18x1 <sup>†</sup>	12	21	15.5	22	22	4
BES 18.0-KH-11SW	M24x1.5	18	21.5	15.5	30	30	5

### Material: Steel, black PTFE coated

<sup>†</sup> Allows smaller diameter sensor to replace larger when installed in this prox mount.

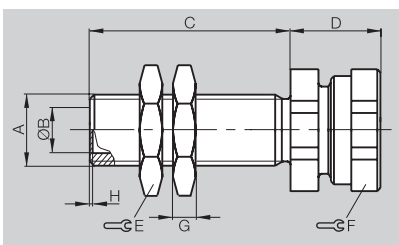


### Prox Mounts with positive stop for sensors with thread length 40 mm or longer

	A	ØB	C	D max.	E	F	G
BES 08.0-KH-2L*	M12x1	8	34	14.5	17	17	4
BES 12.0-KH-2L*	M16x1	12	30	14.5	22	22	4
BES 18.0-KH-2L*	M24x1.5	18	40	18	30	30	5
BES 30.0-KH-2L*	M36x1.5	30	40	18	41	41	6

### Material: CuZn, nickel plated

\* Also available for welding environments (PTFE coated). Add /W to end of ordering code.  
Ordering example: BES 12.0-KH-2L/W



### Prox Mounts with enclosed end for sensors in sealed installation

	A	ØB	C	D max.	E	F	G	H
BES 08.0-KH-3L	M12x1	8	34	14.5	17	17	4	0.5
BES 12.0-KH-3L	M16x1	12	30	14.5	22	22	4	1
BES 18.0-KH-3L	M24x1.5	18	40	19.5	30	30	5	1

### Material: PBT fiberglass reinforced



Contents

Selection Guide

**Universal Mounting Accessories**

Inductive Accessories  
- Mounting Brackets  
- Protection Devices  
- Prox Actuator  
- Banking Screws

Capacitive Accessories

Photoelectric Accessories  
- Brackets  
- Apertures  
- Lenses  
- Reflectors

BMS

Signal Conditioning

Power Supplies  
- Sensor Testers  
- Controllers

Digital Displays

**6** Connectors

**7** Accessories

**o** Product Overview

**t** Technical Reference

**p** Part Number Index