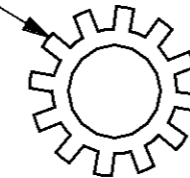


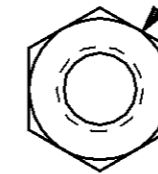
THIS DRAWING IS UNPUBLISHED. RELEASED FOR PUBLICATION, 19  
 © COPYRIGHT 19 BY AMP INCORPORATED. ALL INTERNATIONAL RIGHTS RESERVED.

LOC	DIST	P	F	ZONE	LTR	DESCRIPTION	DATE	APPD
BD	36				W	REDRAWN & REV ECN BD5517	09/30/91	-
					Y	OBSOLETE -10 PER EC 0020-492-95	25 OCT 95	GS

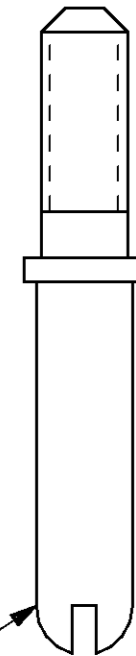
LOCKWASHER  
STAINLESS STEEL



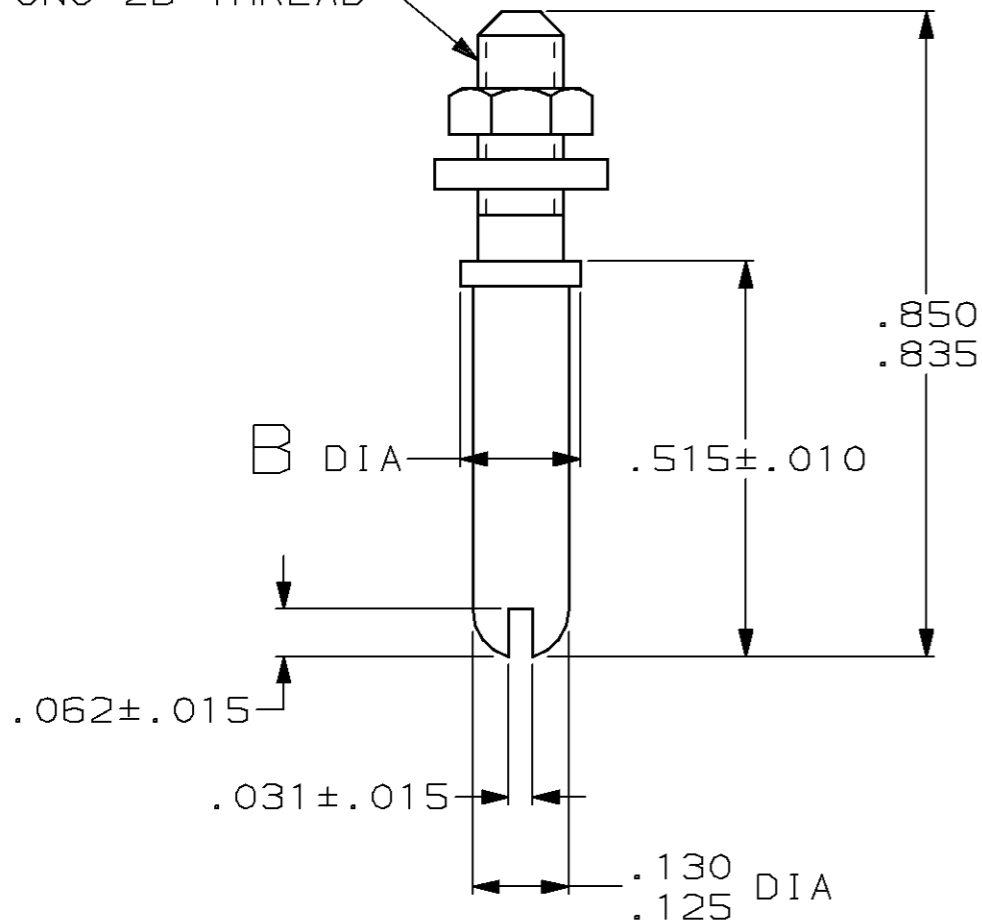
4-40 UNC-2B NUT  
STAINLESS STEEL



GUIDE PIN  
STAINLESS STEEL



4-40 UNC-2B THREAD



ASSEMBLED VIEW

OBSOLETE	.171-.176	1-200389-0
	.156	200389-2
	B	PART NO

DO NOT SCALE PRINT.  
UNLESS SPECIFIED  
DIMENSIONS IN INCHES  
TOLERANCES ON:  
2 PLC DEC ± -  
3 PLC DEC ± .005  
ANGLES ± -

MATERIAL  
SEE CALLOUTS

FINISH  
-

DR 09/30/91  
L.SIPE  
CHK 11/06/91  
R.STONE  
APPD 11/06/91  
S.COYLE

APPD -  
PRODUCT SPEC -

APPLICATION SPEC -

WEIGHT -

**AMP**

AMP Incorporated  
Harrisburg, PA 17105-3608

NAME  
KIT, UNASSEMBLED,  
GUIDE PIN, M SERIES

SIZE B	CAGE CODE 00779	DRAWING NO 200389
-----------	--------------------	----------------------

SCALE 4:1	SHEET 1 OF 1
--------------	-----------------