

## 19" complete chassis from steel, plain top cover and base plate

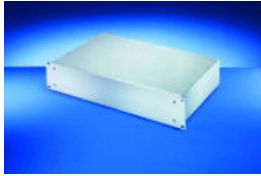
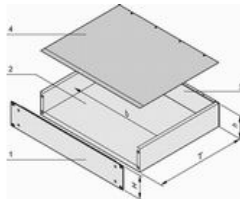


Photo shows 2 U



h = clear height (overall) (H - 3.0 mm)  
b = clear installation width = 447 mm

Part no.: 20860-122

## Features:

- Complete chassis, St (AlZn coated) with Al extrusion front panel
- Detachable rear panel for easy machining
- EMC shielding of approx. 30 dB(A) at 1 GHz (without additional shielding material)
- In accordance with standard IEC 60297-3-101
- In the 1 U version 19" and ATX power supplies can be assembled up to a clearance of 40 mm

Add to basket



## Technical information:

| Height H | H        | Depth T |
|----------|----------|---------|
| 1 U      | 43,65 mm | 340 mm  |

## Downloads:

3D PDF with CAD data (STEP/PDF) ([Log in Required](#))  
 User Manual ([Log in Required](#))  
 EMC test report ([Log in Required](#))  
[Customized application / Networking](#)  
[Customized application / 19" mounting](#)  
[Customized application / EMC case](#)  
[Customized application / 19" angle removable](#)  
[Customized application / 2U case with IEEE boards](#)  
[Customized application / 19" angles](#)  
[Customized application / LAN switch with RJ45 plugs](#)  
[Customized application](#)  
[Customized application](#)  
[Customised application](#)

To gain access to the additional information you must [Log in](#).  
 If you do not yet have a user name, you may [Register here](#).

## Delivery comprises: kit

| Item | Qty | Description   |
|------|-----|---|
| 1    | 1   | Front panel Al extrusion, 3 mm; front anodised, rear etched |
| 2    | 1   | Base body plain, St, 1 mm, (AlZn coated)                    |
| 3    | 1   | Rear panel, St, 1 mm (AlZn coated)                          |
| 4    | 1   | Cover plain, St, 1 mm (AlZn coated)                         |
| 5    | 1   | Assembly kit  |

## Accessories:

| Part no.                  | Description   |               |
|---------------------------|---|---------------|
| <a href="#">20860-256</a> | Front handles incl. assembly kit for 1 U, Al extrusion, anodised, PU 2 pieces | Add to basket |

## Note:

- Further versions with steel front panel (pizza box) available on request
- Use of telescopic slides not possible
- No special EMC version available
- Standardised internal mounting kits cannot be used