



- Variable possibility to combine connection compartment and profile
- 2 enclosure sizes 28HP and 42HP
- Rack for 19" inserts (height 3RU)
- Optional with transparent cover
- Variable length by profile technic

#### **Included in delivery**

Enclosure system - depending on version either with connection compartment, swivel intermediate frame, profile and screwed lid.

#### **Technical data**

##### **Material:**

enclosure profile: DIN EN 573 EN AW-ALMgSi

connection compartment:

DIN EN 1706 EN AC-AISI 12 (Fe)

##### **Ingress protection:**

IP 65 to EN 60529

outdoor application on request

##### **Painting:**

powder coating

##### **Colour:**

RAL 7043, traffic grey B

##### **EMC:**

optional EMC version

##### **Temperature range:**

seal: -40°C to +90°C

transparent cover: -40°C to +60°C

# NoVoTronic 19

## Programme range

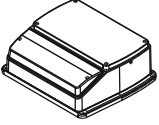
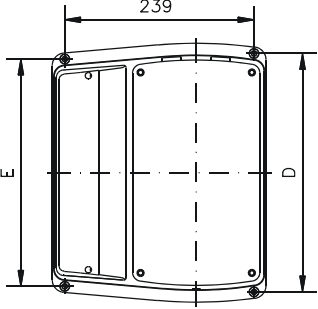
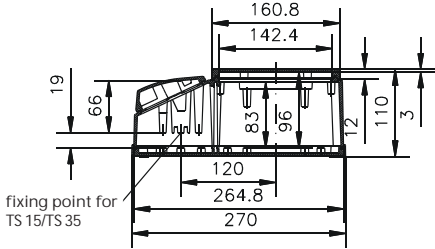
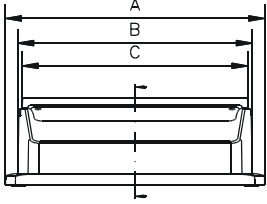
Order No.	Order No. EMC	Dimensions W x L x H (mm)	
<b>Connection compartment</b>			
07.60 28 01	07.61 28 01	256 x 270 x 110	connection compartment, screwed lid
07.60 28 02	07.61 28 02	256 x 270 x 118	connection compartment, screwed front panel frame
07.60 28 03	07.61 28 03	256 x 270 x 139	connection compartment, screwed front panel frame and transparent cover
07.60 28 04	07.61 28 04	256 x 270 x 118	connection compartment, hinged front panel frame
07.60 28 05	07.61 28 05	256 x 270 x 139	connection compartment, screwed front panel frame and transparent cover
07.60 42 01	07.61 42 01	327 x 270 x 110	connection compartment, screwed lid
07.60 42 02	07.61 42 02	327 x 270 x 118	connection compartment, screwed front panel frame
07.60 42 03	07.61 42 03	327 x 270 x 139	connection compartment, screwed front panel frame and transparent cover
07.60 42 04	07.61 42 04	327 x 270 x 118	connection compartment, hinged front panel frame
07.60 42 05	07.61 42 05	327 x 270 x 139	connection compartment, hinged front panel frame and transparent cover
<b>Connection compartment with profile and intermediate frame</b>			
07.60 28 11	07.61 28 11	256 x 270 x 297	connection compartment, swivel intermediate frame, profile and screwed lid
07.60 28 12	07.61 28 12	256 x 270 x 305	connection compartment, swivel intermediate frame, profile and front panel frame
07.60 28 15	07.61 28 15	256 x 270 x 326	connection compartment, swivel intermediate frame, profile and front panel frame with transparent cover
07.60 42 11	07.61 42 11	327 x 270 x 297	connection compartment, swivel intermediate frame, profile and screwed lid
07.60 42 12	07.61 42 12	327 x 270 x 305	connection compartment, swivel intermediate frame, profile and front panel frame
07.60 42 15	07.61 42 15	327 x 270 x 326	connection compartment, swivel intermediate frame, profile and front panel frame with transparent cover
<b>Profile</b>			
07.60 28 21	07.61 28 21	213.7 x 160.8 x 231	profile and screwed lid
07.60 28 22	07.61 28 22	214.3 x 161.4 x 239	lid, profile and front panel frame
07.60 28 25	07.61 28 25	214.3 x 161.4 x 260	lid, profile and front panel frame with transparent cover
07.60 42 21	07.61 42 21	248.8 x 160.8 x 231	profile and screwed lid
07.60 42 22	07.61 42 22	285.4 x 161.4 x 239	lid, profile and front panel frame
07.60 42 25	07.61 42 25	285.4 x 161.4 x 260	lid, profile and front panel frame with transparent cover

## Accessories

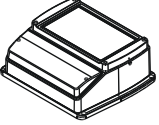
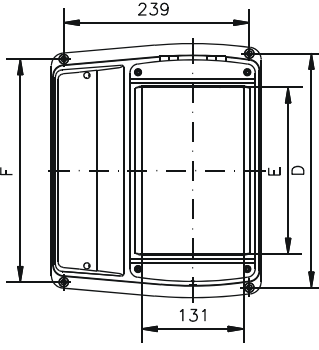
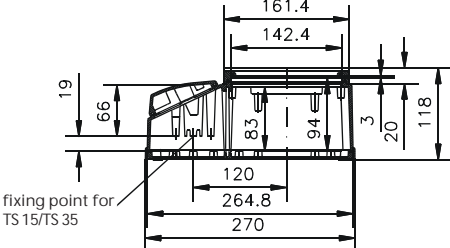
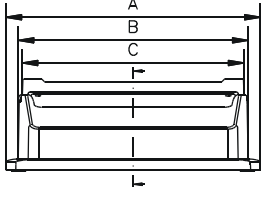
07.60 28 81	19" mounting frame for 28HP		
07.60 42 81	19" mounting frame for 42HP		
07.60 00 01	transparent cover with cylinder lock 28 HP		
07.60 00 02	special lock with socket wrench for connection compartment (mounted)		
07.60 00 03	external brackets for wall mounting for enclosure without connection compartment (set =2 pcs)		
07.60 00 04	spare latch for connection compartment lid (plastic)		
07.60 00 05	transparent cover with cylinder lock 42 HP		
07.60 28 85	partition wall (28HP), detachable for separating connection compartment (2 areas)		
07.60 42 85	partition wall (42HP), detachable for separating connection compartment (2 areas)		
07.61 28 30	aluminium front plate 28 HP, for front panel frame EMC		
07.61 42 30	aluminium front plate 42 HP, for front panel frame EMC		
07.00 00 10	PCB guide rail fixed (set = 10 pcs)		
07.00 00 11	PCB guide rail variable (set = 10 pcs)		
07.28 00 30	mounting plate for connection compartment (28HP version)		
07.42 00 30	mounting plate for connection compartment (42HP version)		
10.07 00 19	table feet (set, self-adhesive, black)		
07.70 00 81	Mounting feet (2 pcs) grey		
07.60 28 30	aluminium front plate 28HP, for front panel frame		
07.60 42 30	aluminium front plate 42HP, for front panel frame		

Dimensions

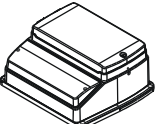
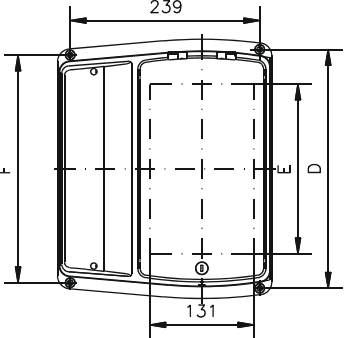
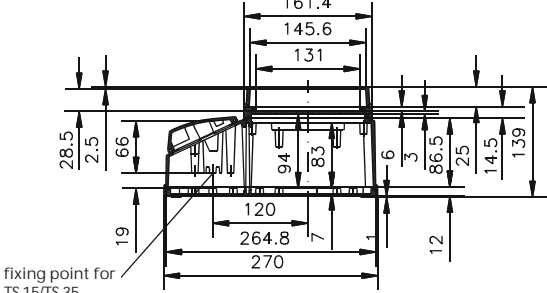
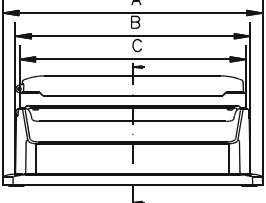
Connection compartment, screwed lid							
Type	Order No.	Order No. EMC	Dimensions				
			A	B	C	D	E
28HP	07.60 28 01	07.61 28 01	256,1	224,8	213,7	229,9	215,8
42HP	07.60 42 01	07.61 42 01	327,2	295,9	284,8	301,0	287,0

Connection compartment, screwed front panel frame								
Type	Order No.	Order No. EMC	Dimensions					
			A	B	C	D	E	F
28HP	07.60 28 02	07.61 28 02	256,1	224,8	214,3	215,9	142,9	229,9
42HP	07.60 42 02	07.61 42 02	327,2	295,9	285,4	301,0	214,0	287,0

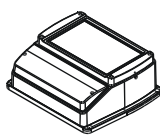
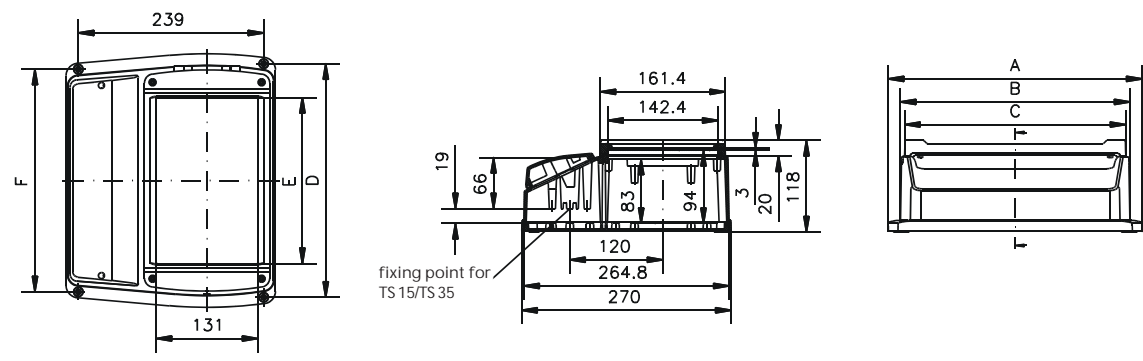
Connection compartment, screwed front panel frame and transparent cover								
Type	Order No.	Order No. EMC	Dimensions					
			A	B	C	D	E	F
28HP	07.60 28 03	07.61 28 03	256,1	224,8	214,3	215,9	142,9	229,9
42HP	07.60 42 03	07.61 42 03	327,2	295,9	285,4	301,0	214,0	287,0

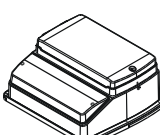
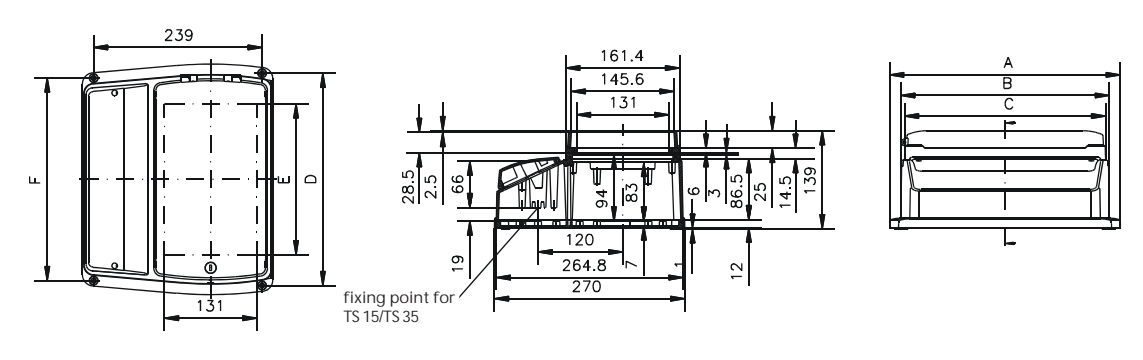
# NoVoTronic 19

## Dimensions

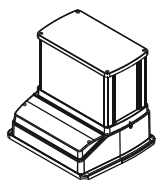
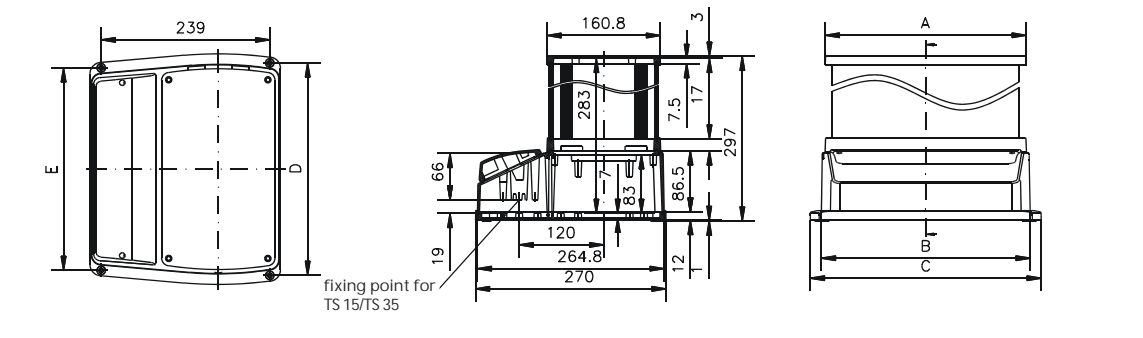
Connection compartment, hinged front panel frame								
Type	Order No.	Order No. EMC	Dimensions					
			A	B	C	D	E	F
28HP	<b>07.60 28 04</b>	<b>07.61 28 04</b>	256,1	224,8	214,3	215,9	142,9	229,9
42HP	<b>07.60 42 04</b>	<b>07.61 42 04</b>	327,2	295,9	285,4	301,0	214,0	287,0

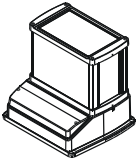
Connection compartment, hinged front panel frame and transparent cover								
Type	Order No.	Order No. EMC	Dimensions					
			A	B	C	D	E	F
28HP	<b>07.60 28 05</b>	<b>07.61 28 05</b>	256,1	224,8	214,3	215,9	142,9	229,9
42HP	<b>07.60 42 05</b>	<b>07.61 42 05</b>	327,2	295,9	285,4	301,0	214,0	287,0

Connection compartment, swivel intermediate frame, profile and screwed lid							
Type	Order No.	Order No. EMC	Dimensions				
			A	B	C	D	E
28HP	<b>07.60 28 11</b>	<b>07.61 28 11</b>	213,7	224,8	256,1	229,9	215,8
42HP	<b>07.60 42 11</b>	<b>07.61 42 11</b>	284,8	295,8	327,2	301,0	287,0

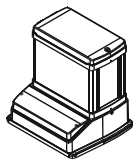
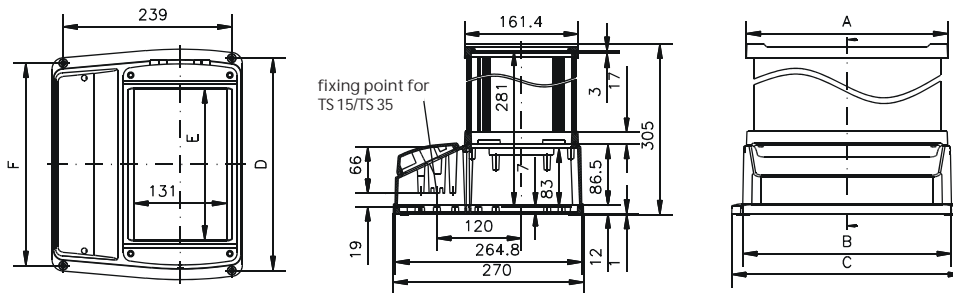



Dimensions



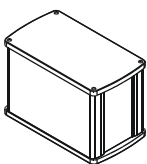
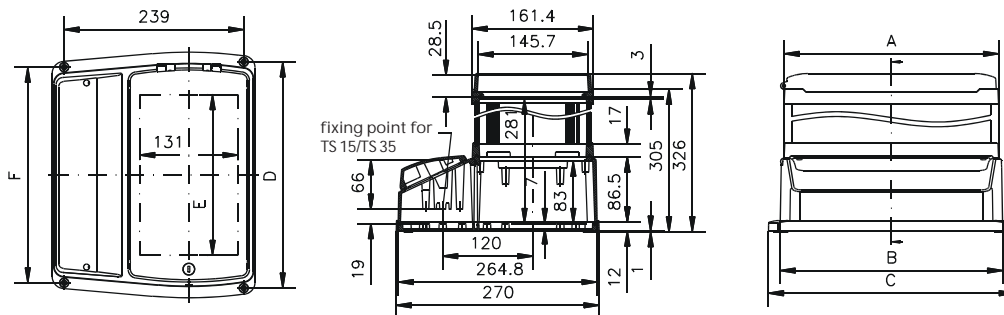
Connection compartment, swivel intermediate frame, profile and front panel frame

Type	Order No.	Order No. EMC	Dimensions					
			A	B	C	D	E	F
28HP	07.60 28 12	07.61 28 12	214,3	224,8	256,1	229,9	142,9	215,8
42HP	07.60 42 12	07.61 42 12	285,4	295,8	327,2	301,0	214,0	287,0



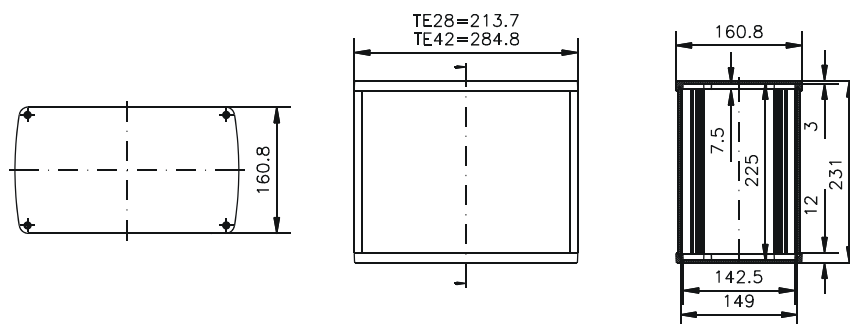
Connection compartment, swivel intermediate frame, profile and front panel frame with transparent cover

Type	Order No.	Order No. EMC	Dimensions					
			A	B	C	D	E	F
28HP	07.60 28 15	07.61 28 15	214,3	224,8	256,1	229,9	142,9	215,8
42HP	07.60 42 15	07.61 42 15	285,4	295,8	327,2	301,0	214,0	287,0

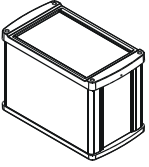


Profile and screwed lid

Type	Order No.	Order No. EMC
28HP	07.60 28 21	07.61 28 21
42HP	07.60 42 21	07.61 42 21

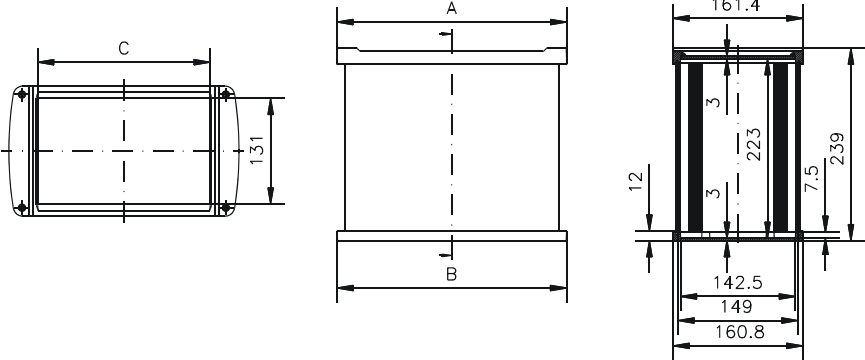


## Dimensions

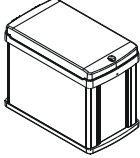


Lid, profile and front panel frame

Type	Order No.	Order No. EMC	Dimensions		
			A	B	C
28HP	<b>07.60 28 22</b>	<b>07.61 28 22</b>	214,3	213,7	142,9
42HP	<b>07.60 42 22</b>	<b>07.61 42 22</b>	285,4	284,8	214,0

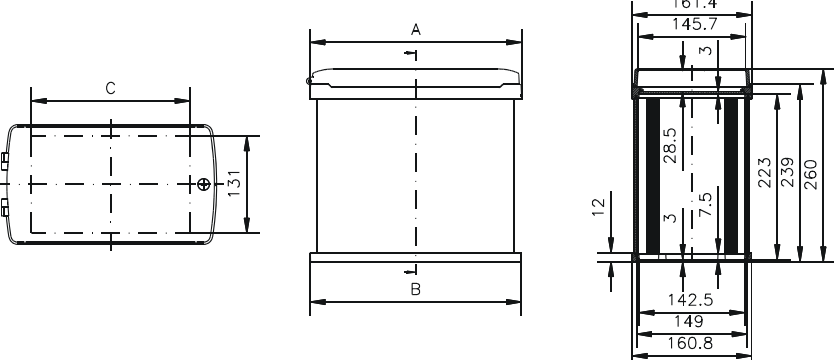


---



Lid, profile and front panel frame with transparent cover

Type	Order No.	Order No. EMC	Dimensions		
			A	B	C
28HP	<b>07.60 28 25</b>	<b>07.61 28 25</b>	214,3	213,7	142,9
42HP	<b>07.60 42 25</b>	<b>07.61 42 25</b>	285,4	284,8	214,0



Accessories



Mounting frame

Type	Order No.
19" - 28HP	<b>07.60 28 81</b>
19" - 42HP	<b>07.60 42 81</b>



Cylinder lock for transparent cover

Order No. **07.60 00 01**



Special lock with socket wrench for connection compartment

Order No. **07.60 00 02**



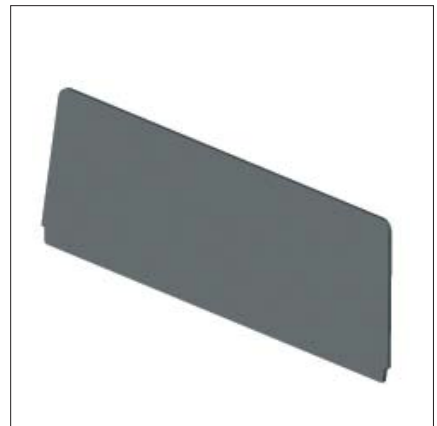
Mounting brackets, set (2 pcs.)

Order No. **07.60 00 03**



Spare latch for lid connection compartment

Order No. **07.60 00 04**



Partition wall for separating connection compartment

Type	Order No.
19" - 28HP	<b>07.60 28 85</b>
19" - 42HP	<b>07.60 42 85</b>

## Accessories



Board guides for PCB's

Type	Order No.
fixed (set = 10 pcs.)	<b>07.00 00 10</b>
variable (set = 10 pcs.)	<b>07.00 00 11</b>



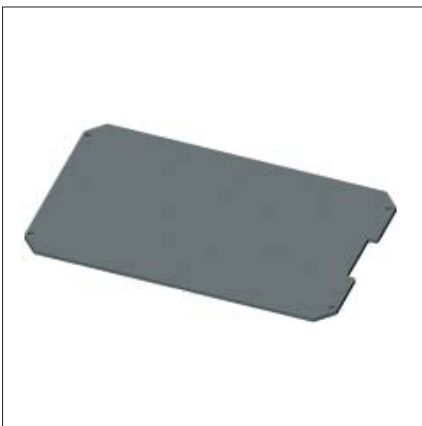
Mounting plate - connection compartment

Type	Order No.
19" - 28HP	<b>07.28 00 30</b>
19" - 42HP	<b>07.42 00 30</b>



Foot elements

Type	Order No.
Self adhesive table feet	<b>10.07 00 19</b>
Mounting feet (2 pcs.)	<b>07.70 00 81</b>



Aluminium front plate

Type	Order No.
19" - 28HP	<b>07.60 28 30</b>
19" - 42HP	<b>07.60 42 30</b>