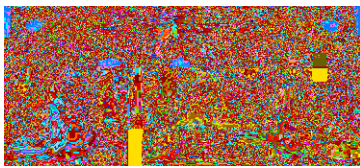


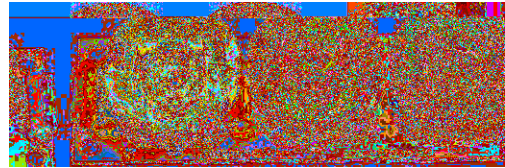
LinkLED™-K2

Plug-n-Play LED System

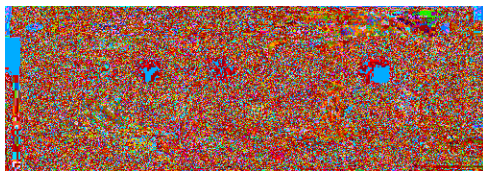
Solid-State RGB and RGBW LED units, based on the latest high-power K2 LED technology mounted on high-spec. aluminium-backed PCBs, with output of deep saturated colours to enable OEMs to easily create full colour-change applications. Designed for use with low-voltage, constant-current power supplies, such as Colourdriver 36 and Colourdriver XP.



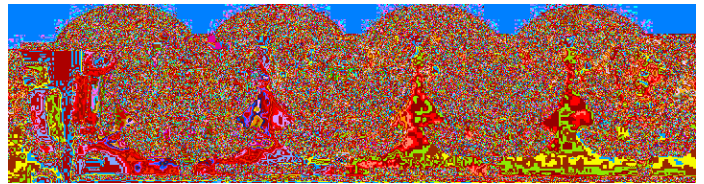
LinkLED-K2-RGB



LinkLED Optic-K2-RGB



LinkLED-K2-RGBW



LinkLED Optic-K2-RGBW

Features / Benefits

- **Long Life** - LinkLED™ K2 light modules offer up to 50,000 hrs. virtually maintenance-free, energy efficient operation.
- **UV / IR Safe** - LinkLED™ K2 light modules emit no UV or IR radiation, so is suitable to illuminate light-sensitive materials or products.
- **Plug and Play** Allows ease of connection and versatility of system to suit multiple applications.
- **Visual Effect** - LinkLED™ K2 light modules provide high colour saturation and brilliance and enable the creation of any colour in the spectrum.
- **Onboard Optics** LinkLED™ K2 light modules are available with or without optics. OPT-K2 optics, where fitted are specifically designed for K2 LEDs.
- **Cables** - Interconnecting and input cables are available for the LinkLED K2 light modules (see overleaf).

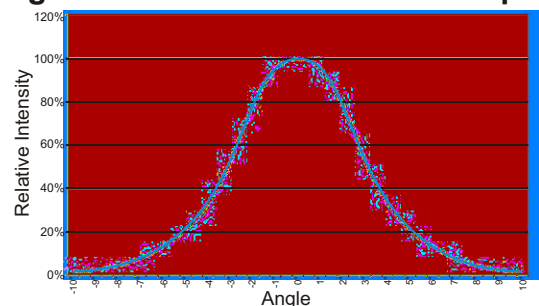
Applications

- **Architectural Lighting.**
- **Cove and Cornice Lighting.**
- **Decorative.**
- **Accent Lighting.**
- **Colour Washing**
- **Night Clubs, Restaurants and Bars**

Optical

LED Colour	Wavelength/ CCT		Luminous Flux or Radiometric Power (1m or 1000mA)		
	Min.	Max.	350mA	700mA	1000mA
Red	620nm	645nm	36 lm	60 lm	-----
Green	520nm	550nm	36 lm	62 lm	80 lm
Blue	440nm	460nm	176mW	294 mW	380 mW
White	4500°K	10000°K	36 lm	62 lm	80 lm
Amber	584nm	597nm	36 lm	60 lm	-----

Light Distribution Curve for K2 Optic



Environmental

Maximum Ambient Temp	+40°C
LED Life @ 55°C PCB Temperature	50,000 Hrs

