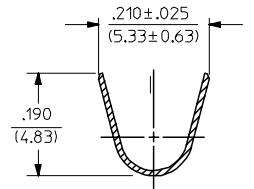
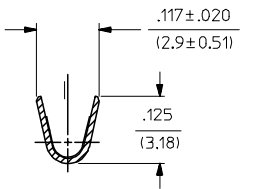


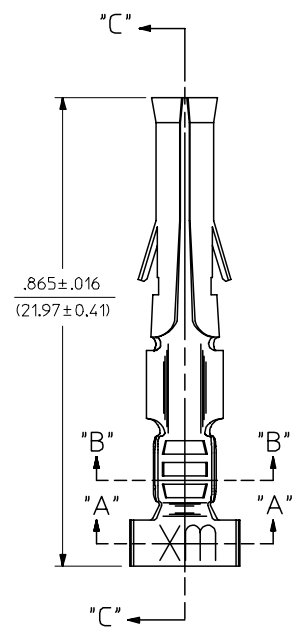
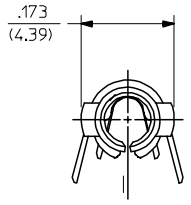
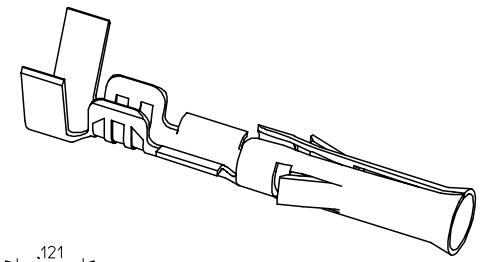
PART NO.	ENG. NO.
02-09-1103	1189-(P901)L
02-09-1101	1189-(P901)



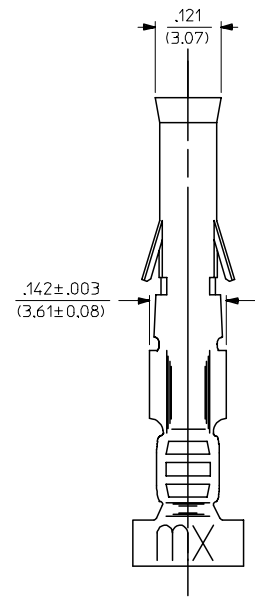
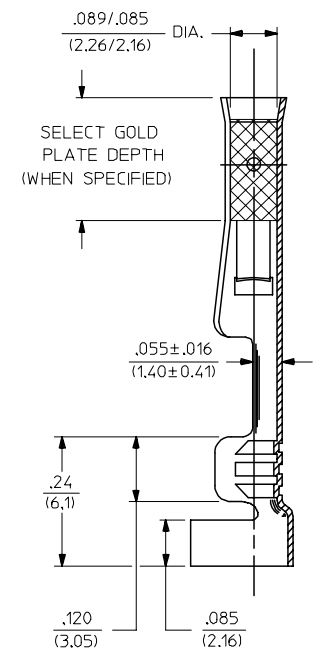
SECT. "A-A"



SECT. "B-B"



SECT. "C-C"



NOTES:

- MATERIAL: CARTRIDGE BRASS, ALLOY #C26000, .010/(0.25) THICK
- FINISH CODE:
901 HOT TIN DIP .000020/(0.0005) MIN.
- THIS PART CONFORMS TO PROD. SPEC. 02-09.
- PACKAGING INFORMATION: NOT AVAILABLE
- TERMINAL FOR USE WITH .093/(2.36) SERIES HOUSINGS AND WILL ACCEPT 14 THRU 20 AWG WIRE.
- INSERTION FORCE: 3.5 LBS. MAX. WHEN TERMINAL IS INSERTED INTO AN .093 SERIES HOUSING.
- RETENTION: 20 LBS. MIN. FROM HOUSING.

LEGEND

1189-(*)***)*
 * - FORM
 ** - BLANK=CHAIN
 *) - L=LOOSE
 P=PREPLATE
 BLANK=POSTPLATE
 FINISH CODE



THIRD ANGLE PROJECTION

REV	DESCRIPTION
D1	FC NO: UCP2006-1089 DRW:NDPETERSON 2005/11/18 CHKD:FSM TH 2005/11/29 APPR:FSM TH 2005/12/02

DRAFT WHERE APPLICABLE
MUST RE