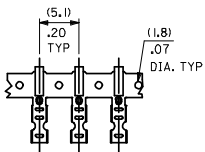
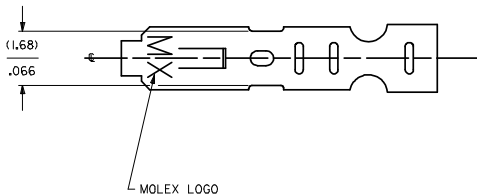
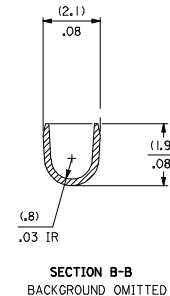
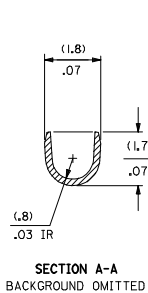
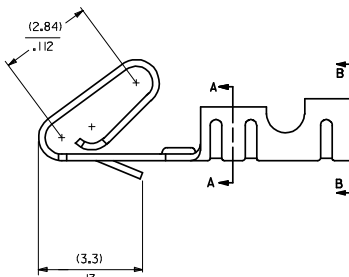
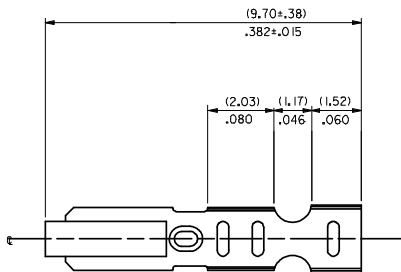
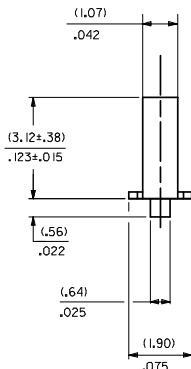
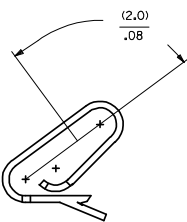


CARRIER VIEW

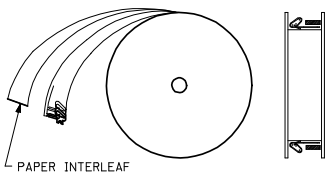


SELECT GOLD LOCATION



6459-(***)*
 FORM
 L=LOOSE
 A=CHAIN PER DETAIL A
 PLATING
 SEE NOTE 2

WINDING DETAIL A



- NOTES:
 1. MATERIAL:
 (0.203±0.010)/.0080±.0004 THICK BRASS
 2. FINISH:
 122 - OVERALL TIN: (0.00381)/.000150 MIN. TIN OVER
 (0.000761)/.000030 MIN NICKEL
 224 - OVERALL TIN (0.00508)/.000200 MIN. TIN OVER
 (0.001271)/.000050 MIN NICKEL
 231 - SELECT GOLD (0.000761)/.000030 MIN
 SELECT TIN: (0.002541)/.000100 MIN.
 OVERALL NICKEL UNDERPLATE (0.001271)/.000050 MIN.
 *P909 - OVERALL HOT TIN DIP (0.002541)/.000100 MIN.
 550 - SELECT GOLD (0.000381)/.000015 MIN
 OVERALL GOLD FLASH: (0.000051)/.000002 MIN.
 OVERALL NICKEL UNDERPLATE: (0.000761)/.000030 MIN.
 555- SELECT GOLD (0.000381)/.000015 MIN
 OVERALL NICKEL UNDERPLATE: (0.000761)/.000030
 558 - SELECT GOLD: (0.000761)/.000030 MIN.
 OVERALL GOLD FLASH: (0.000051)/.000002 MIN.
 OVERALL NICKEL UNDERPLATE: (0.001271)/.000050 MIN.
 561- SELECT GOLD (0.000761)/.000030 MIN.
 OVERALL NICKEL UNDERPLATE (0.001271)/.000050
 *THE PRIMARY SHIPPING CARTON WILL BE LABELED "COMPLIANT TO RoHS
 DIRECTIVE 2002/95/EC AND ELV ANNEX II OF DIRECTIVE 2000/53/EC."
 CARTONS WITHOUT THIS LABEL MAY CONTAIN PRODUCT WITH TIN-LEAD PLATING.
 3. PRODUCT SPEC PS-10-07
 4. PACKAGING SPECIFICATION: NONE
 5. CRIMP IS FOR 22-30 GA WIRE WITH (1.571)/.062 DIA INSULATION MAX.
 6. INSERTION FORCE OF TERMINAL INTO (2.54)/.100 CENTERLINE CONNECTOR IS 2.5 LBS. MAX
 7. TERMINALS WILL RETAIN 8 LBS PULL FOR 1 MIN IN A (2.54)/.100 CENTERLINE HOUSING.
 8. DIMENSIONS GIVEN ACROSS CENTERLINES ARE SYMMETRICAL ABOUT THOSE CENTERLINES
 WITHIN HALF THE TOTAL TOLERANCE.
 9. THIS PART CONFORMS TO CLASS B REQUIREMENTS OF COSMETIC SPECIFICATION PS-45499-002

UPDATE DIMS. IEC NO: UCP-2008-2190 DRAWN BY: DRW:WADERR 2008/03/17 CHECKED BY: CHK:DL SCHMITZ 2008/03/18 APPROVED BY: APP:RFS:SMITH 2008/03/24	QUALITY SYMBOLS	GENERAL TOLERANCES (UNLESS SPECIFIED)	DIMENSION STYLE	SCALE	DESIGN UNITS	THIRD ANGLE PROJECTION
	□=0 ▽=0	mm INCH 4 PLACES ± --- ± --- 3 PLACES ± --- ± .005 2 PLACES ± 0.13 ± .010 1 PLACE ± 0.25 ± --- ANGULAR ± 1/2°	IN/MM	---	INCH	DRAWN BY: DATE SAMIEC 01/21/92 CHECKED BY: DATE PATEL 01/21/92 APPROVED BY: DATE LENZ 01/21/92
	DRAFT WHERE APPLICABLE MUST REMAIN WITHIN DIMENSIONS	SEE CHART	MATERIAL NO.	DOCUMENT NO.	CRIMP TERMINAL 22-30 GA WIRE SAME AS 2759 EXCEPT MATL MOLEX INCORPORATED	
	SIZE	SD-6459	6459-(***)*	1 OF 2	SHEET NO. 1 OF 2	

6459-(****)*									
PART NO.	ENG. NO.	PART NO.	ENG. NO.	PART NO.	ENG. NO.	PART NO.	ENG. NO.	PART NO.	ENG. NO.
08-52-0101	6459-(P909)								
08-52-0123	6459-(P909)IL								
08-65-0801	6459-(561)								
	6459-(561)IL								
08-52-0118	6459-(224)								
	6459-(224)IL								
08-52-0121	6459-(122)								
08-52-0122	6459-(122)IL								
08-65-0811	6459-(558)								
08-65-0812	6459-(558)IL								
08-65-0815	6459-(555)								
08-65-0816	6459-(555)IL								
08-65-0813	6459-(550)								
08-65-0814	6459-(550)IL								
08-65-0817	6459-(231)								
08-65-0818	6459-(231)IL								

REMOVE 6459-(999) REC NO: UCP/2008-2190 DRW:WADERR 2008/03/17 CHKD:LSCHMIDT 2008/03/18 APPR:FSMITH 2008/03/24	QUALITY SYMBOLS ▽=0 ▽=0	GENERAL TOLERANCES (UNLESS SPECIFIED) <table border="1"> <thead> <tr> <th></th> <th>mm</th> <th>INCH</th> </tr> </thead> <tbody> <tr> <td>4 PLACES ±</td> <td>---</td> <td>---</td> </tr> <tr> <td>3 PLACES ±</td> <td>---</td> <td>±.005</td> </tr> <tr> <td>2 PLACES ±</td> <td>0.13</td> <td>±.010</td> </tr> <tr> <td>1 PLACE ±</td> <td>0.25</td> <td>---</td> </tr> </tbody> </table> ANGULAR ±1/2°		mm	INCH	4 PLACES ±	---	---	3 PLACES ±	---	±.005	2 PLACES ±	0.13	±.010	1 PLACE ±	0.25	---	DIMENSION STYLE IN/MM	SCALE --- INCH	DESIGN UNITS INCH	THIRD ANGLE PROJECTION
		mm	INCH																		
	4 PLACES ±	---	---																		
	3 PLACES ±	---	±.005																		
2 PLACES ±	0.13	±.010																			
1 PLACE ±	0.25	---																			
DRAWN BY SAMIEC	DATE 01/21/92	CHECKED BY PATEL	DATE 01/21/92	APPROVED BY LENZ	DATE 01/21/92	TITLE CRIMP TERMINAL 22-30 GA WIRE SAME AS 2759 EXCEPT MATL															
MATERIAL NO. SEE CHART	DOCUMENT NO. SD-6459	MOLEX INCORPORATED	SHEET NO. 2 OF 2	THIS DRAWING CONTAINS INFORMATION THAT IS PROPRIETARY TO MOLEX INCORPORATED AND SHOULD NOT BE USED WITHOUT WRITTEN PERMISSION																	