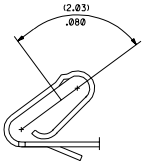
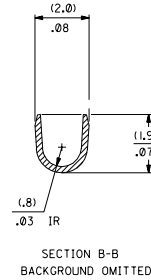
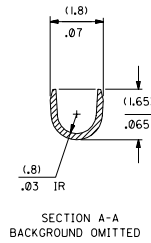
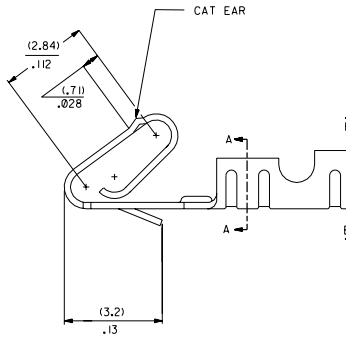
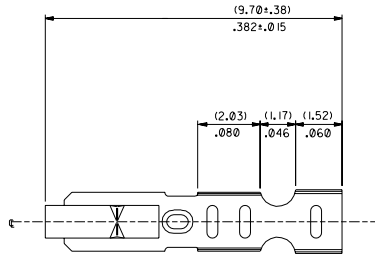
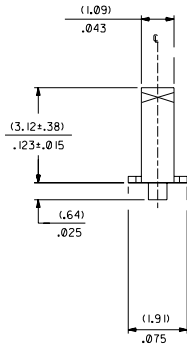
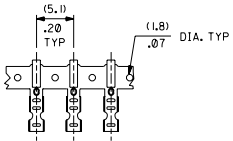


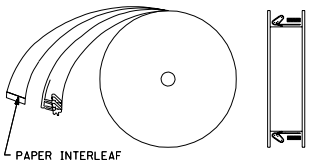
SELECT GOLD LOCATION



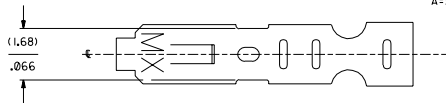
CARRIER VIEW



WINDING DETAIL B



41572-\*(\*\*\*)\*  
MATERIAL L=LOOSE  
A=SEE NOTE 5 FORM  
L=LOOSE  
BLANK=CHAIN PER DETAIL A



PLATING  
PER SDES-88  
\*(P909) OVERALL HOT TIN DTP: .00254 MICROMETERS MIN  
(550) SELECT GOLD: .00038 MICROMETERS MIN.  
OVERALL GOLD FLASH: .00005 MICROMETERS MIN.  
OVERALL NICKEL UNDERPLATE: .00076 MICROMETERS MIN.  
(555) SELECT GOLD: .00038 MICROMETERS MIN.  
OVERALL NICKEL UNDERPLATE: .00076 MICROMETERS MIN.

\*THE PRIMARY SHIPPING CARTON WILL BE LABELED 'COMPLIANT TO RoHS DIRECTIVE 2002/95/EC AND ELV ANNEX II) OF DIRECTIVE 2000/53/EC.' CARTONS WITHOUT THIS LABEL MAY CONTAIN PRODUCT WITH TIN-LEAD PLATING.

- NOTES:  
1. CRIMP IS FOR 22-30 GA WIRE, WITH .062 DIA INSULATION MAX.  
2. INSERTION FORCE OF TERMINAL INTO .100 & CONNECTOR IS 2.5 LBS. MAX  
3. TERMINALS MUST RETAIN 8 LBS PULL FOR 1 MIN. IN KK .100 & HOUSING.  
4. PARTS CONFORM TO PS-10-07  
5. MATERIAL: .0080±.0004 THICK PHOS BRONZE ALLOY 510  
6. DIMENSIONS GIVEN ACROSS CENTERLINES ARE SYMMETRICAL ABOUT THOSE CENTERLINES WITHIN HALF THE TOTAL TOLERANCE.

PART NO.	ENG NO.
08-65-0804	41572-A(P909)
08-65-0805	41572-A(P909)L
	41572-A(555)
	41572-A(555)L
	41572-A(550)
	41572-A(550)L

D	CHG P913 TO P909 10/2004-181 41572-SCHÄFER
C	ADD TO CAD ECR U30423 3-19-93 SAMIEC

DIMENSIONS SHOWN METRIC INCH		REV. = 0		REVISE ONLY ON CAD SYSTEM	
UNLESS OTHERWISE SPECIFIED DIMENSIONS ARE IN INCH		TITLE		CRIMP TERMINAL 22-30 GA WIRE	
1 PLATE ± .010	INCH	DATE	1/15/93	SHEET NO.	1 OF 1
2 PLATE ± .015	INCH	SCALE	1:1	DATE	3/19/93
3 PLATE ± .038	INCH	APPROVAL		MOXEL INCORPORATED	
DATE: 08/25/93		PART NO.		SEE CHART	
BY: SAMIEC		DIP. NO.		SD-41572	
APP'D: LENZ		SCALE		MOXEL INC. 6050 S. 100TH AVE. # 2000 MINNETONKA, MN 55345	