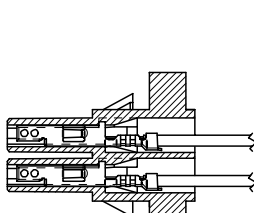
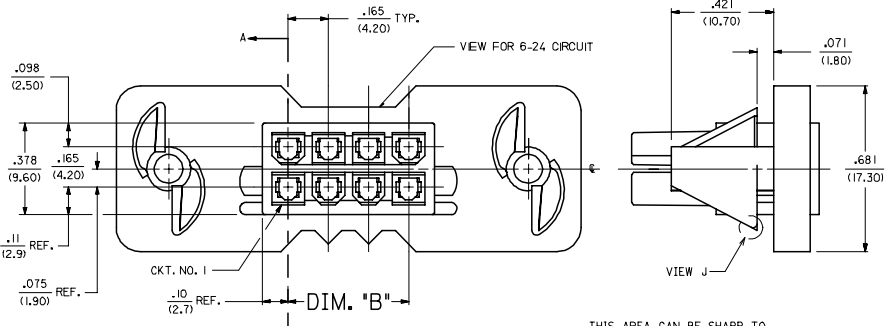


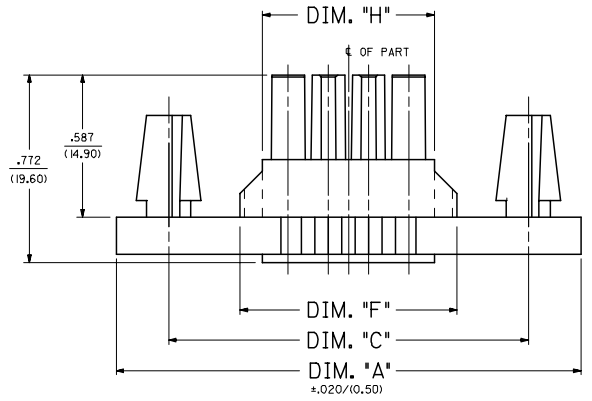
20 19 18 17 16 15 14 13 12 11 10 9 8 7 6 5 4 3 2 1



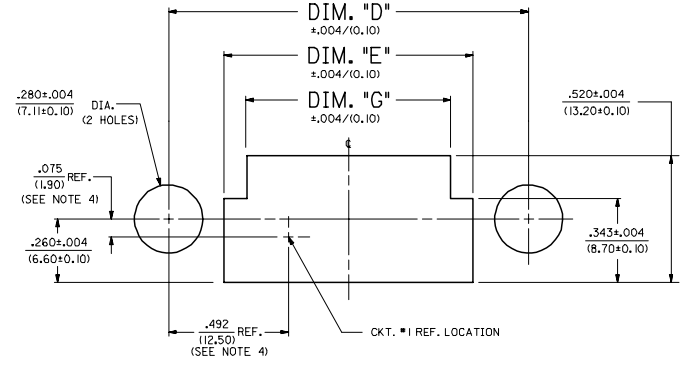
SECTION "A-A"  
TERMINAL ORIENTATION



THIS AREA CAN BE SHARP TO .025/(0.64) MAXIMUM RADIUS



2-8 & 12-24 CIRCUIT HEADER  
(SEE SHEET 2 FOR 10 CIRCUIT HEADER DESIGN)

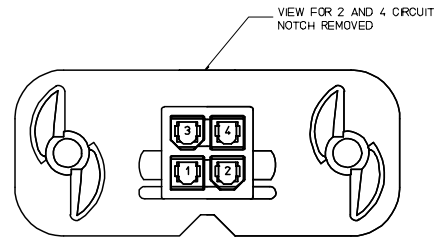


RECOMMENDED PANEL CUT-OUT FOR .050±0.12/(1.27±0.30) THICK PANEL  
(SEE NOTE 11)

| CKT. SIZE | DIM. "A"         | DIM. "B"         | DIM. "C"         | DIM. "D"         | DIM. "E"          | DIM. "F"         | DIM. "G"         | DIM. "H"         |
|-----------|------------------|------------------|------------------|------------------|-------------------|------------------|------------------|------------------|
| 2         | .1417<br>(36.00) | N/A              | .984<br>(25.00)  | .984<br>(25.00)  | .528<br>(13.40)   | .398<br>(10.10)  | .343<br>(8.70)   | .213<br>(5.40)   |
| 4         | .1583<br>(40.20) | .165<br>(4.20)   | 1.150<br>(29.20) | 1.150<br>(29.20) | 1.150<br>(29.20)  | .563<br>(14.30)  | .508<br>(12.90)  | .378<br>(9.60)   |
| 6         | .1748<br>(44.40) | .331<br>(8.40)   | 1.315<br>(33.40) | 1.315<br>(33.40) | .858<br>(21.80)   | .728<br>(18.50)  | .673<br>(17.10)  | .543<br>(13.80)  |
| 8         | .1913<br>(48.60) | .496<br>(12.60)  | 1.480<br>(37.60) | 1.480<br>(37.60) | 1.480<br>(37.60)  | .894<br>(22.70)  | .819<br>(20.80)  | .709<br>(18.00)  |
| 10        | .2078<br>(52.80) | .661<br>(16.80)  | 1.645<br>(41.80) | 1.645<br>(41.80) | 1.811<br>(46.00)  | 1.189<br>(30.20) | 1.059<br>(26.90) | .874<br>(22.20)  |
| 12        | .2244<br>(57.00) | .827<br>(21.00)  | 1.811<br>(46.00) | 1.811<br>(46.00) | 2.224<br>(56.40)  | 1.364<br>(34.40) | 1.224<br>(31.10) | 1.039<br>(26.40) |
| 14        | .2409<br>(61.20) | .992<br>(25.20)  | 1.976<br>(50.20) | 1.976<br>(50.20) | 2.442<br>(62.00)  | 1.520<br>(38.60) | 1.390<br>(35.30) | 1.205<br>(30.60) |
| 16        | .2575<br>(65.40) | 1.157<br>(29.40) | 2.142<br>(54.40) | 2.142<br>(54.40) | 2.856<br>(72.60)  | 1.685<br>(42.80) | 1.500<br>(38.10) | 1.370<br>(34.80) |
| 18        | .2740<br>(69.60) | 1.323<br>(33.60) | 2.307<br>(58.60) | 2.307<br>(58.60) | 3.270<br>(83.30)  | 1.850<br>(47.00) | 1.720<br>(43.70) | 1.535<br>(39.00) |
| 20        | .2906<br>(73.80) | 1.488<br>(37.80) | 2.472<br>(62.80) | 2.472<br>(62.80) | 3.684<br>(93.60)  | 2.016<br>(51.30) | 1.886<br>(47.90) | 1.701<br>(43.20) |
| 22        | .3071<br>(78.00) | 1.653<br>(42.00) | 2.638<br>(67.00) | 2.638<br>(67.00) | 4.098<br>(104.40) | 2.181<br>(55.40) | 2.051<br>(52.10) | 1.866<br>(47.40) |
| 24        | .3236<br>(82.20) | 1.818<br>(46.20) | 2.803<br>(71.20) | 2.803<br>(71.20) | 4.512<br>(114.30) | 2.346<br>(59.60) | 2.217<br>(56.30) | 2.031<br>(51.60) |

NOTES:

- MATERIAL:  
 \*1 = NYLON 6/6, 94V-2, COLOR: NATURAL.  
 \*2 = NYLON 6/6, 94V-0, COLOR: NATURAL.  
 \*3 = NYLON 6/6, 94V-2, COLOR: BLACK.  
 \*4 = NYLON 6/6, 94V-0, COLOR: BLACK.
- FINISH: NOT APPLICABLE.
- PRODUCT SPECIFICATION: PS-5556-002
- PACKAGING: PK-42474-001.
- PART MATES WITH MINI-FIT B.M.I. PLUG #42475, AND HEADERS 42404, 42440, 43810, 44068 & 43879.
- PART TO BE USED WITH MOLEX FEMALE TERMINAL #5556.
- THIS CONNECTOR ALLOWS FOR .050/(1.27) MAX. MISALIGNMENT IN ANY DIRECTION.
- THIS DIMENSION TO BE USED FOR ALIGNMENT OF THE MATING CONNECTOR.
- CONNECTOR ASSEMBLIES ARE NOT TO BE MATED OR UNMATED WHILE CIRCUITS ARE LIVE.
- THIS PART IS INTENDED FOR ONE PANEL INSERTION ONLY. REMOVING AND RE-INSERTION CAN DAMAGE THE MOUNTING SPIRALS.
- PANEL SHOULD BE PUNCHED IN THE DIRECTION OF CONNECTOR INSERTION.
- BOTH SPIRALS SHOULD BE INSERTED INTO THE PANEL AT THE SAME TIME. ROCKING THE PART INTO PLACE MAY CAUSE SPIRAL DAMAGE.
- THIS PART IS NOT INTENDED TO PROVIDE ANY ALIGNMENT OF CUSTOMER COMPONENTS OR MODULES, SUCH AS POWER SUPPLIES AND CHASSIS.
- IF THIS PRODUCT IS STORED IN AN ENVIRONMENT WITH A RELATIVE HUMIDITY OF LESS THAN 50%, MOISTURE MUST BE ADDED. REFER TO TECHNICAL ADVISORY AS-45499-001 FOR INSTRUCTIONS.
- A MAXIMUM TOLERANCE OF .050/(1.27) ALLOWS FOR 2 POINTS OF ELECTRICAL CONTACT. A MAXIMUM TOLERANCE OF .020/(0.5) ALLOWS FOR 4 POINTS OF CONTACT.
- WIRES ARE TO BE DRESSED IN SUCH A MANNER TO ALLOW THE TERMINALS TO FLOAT FREELY IN THE POCKET.
- PART CONFORMS TO CLASS "B" REQUIREMENTS OF COSMETIC SPECIFICATION PS-45499-002.

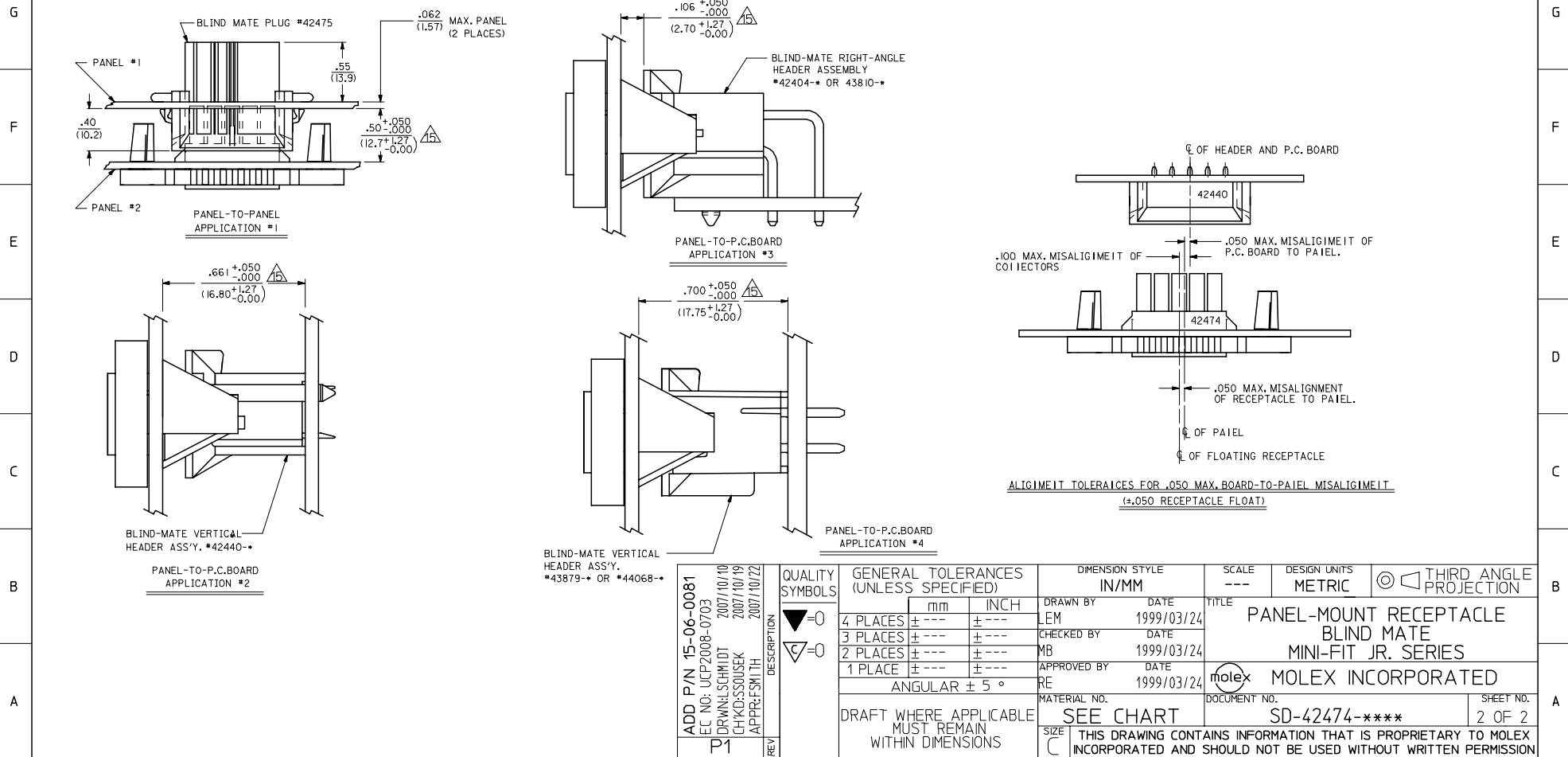


LEGEND:  
 42474 - \*\* \* 1  
 BASE NUMBER  
 CIRCUIT SIZE (02-24)  
 MATERIAL (SEE NOTE 1.)

|   |   |  |   |                               |                    |  |                     |
|---|---|--|---|-------------------------------|--------------------|--|---------------------|
| DIM. "A" TOLERANCE<br>DEC. NO. UCP 2008-0703<br>DRWNSLCHMUT 2007/10/16<br>CHKDSSWSEK 2007/10/19<br>APPRFSMTH 2007/10/22<br>P1 | QUALITY SYMBOLS   | GENERAL TOLERANCES (UNLESS SPECIFIED)  | DIMENSION STYLE   | SCALE                         | DESIGN UNITS       | THIRD ANGLE PROJECTION   | 2 PT                |
|   | ▽=0<br>▽=0  | mm INCH<br>4 PLACES ± --- ± ---<br>3 PLACES ± --- ± .015<br>2 PLACES ± 0.38 ± ---<br>1 PLACE ± --- ± ---<br>ANGULAR ± 1/2° | IN/MM<br>DRAWN BY DATE<br>GEP 1989/08/24<br>CHECKED BY DATE<br>RJF 1989/08/24<br>APPROVED BY DATE<br>RAS 1989/08/24 | 4:1                           | METRIC             | TITLE<br>PANEL-MOUNT RECEPTACLE<br>BLIND MATE<br>MINI-FIT JR. SERIES | 1 PT                |
|   | DRAFT WHERE APPLICABLE<br>MUST REMAIN WITHIN DIMENSIONS   | SEE SHEET 2  | MATERIAL NO.<br>SD-42474-****   | DOCUMENT NO.<br>SD-42474-**** | MOLEX INCORPORATED |  | SHEET NO.<br>1 OF 2 |
|   | THIS DRAWING CONTAINS INFORMATION THAT IS PROPRIETARY TO MOLEX INCORPORATED AND SHOULD NOT BE USED WITHOUT WRITTEN PERMISSION |  |   |                               |                    |  |                     |

19 18 17 16 15 14 13 12 11 10 9 8 7 6 5 4 3 2 1

|   | 13          | 12          | 11        | 10                     | 9           | 8           | 7         | 6                      | 5           | 4         | 3                      | 2           | 1         |                        |
|---|-------------|-------------|-----------|------------------------|-------------|-------------|-----------|------------------------|-------------|-----------|------------------------|-------------|-----------|------------------------|
|   | PART NUMBER | ENG. NUMBER | CKT. SIZE | MATERIAL (SEE NOTE 1.) | PART NUMBER | ENG. NUMBER | CKT. SIZE | MATERIAL (SEE NOTE 1.) | ITEM NUMBER | CKT. SIZE | MATERIAL (SEE NOTE 1.) | ITEM NUMBER | CKT. SIZE | MATERIAL (SEE NOTE 1.) |
| J | NOT TOOLED  | 42474-0211  | 2         | 94V-2                  | NOT TOOLED  | 42474-0221  | 2         | 94V-0                  | NOT TOOLED  | 2         | 94V-2                  | NOT TOOLED  | 2         | 94V-0                  |
|   | 15-06-0040  | 42474-0411  | 4         | 94V-2                  | 15-06-0041  | 42474-0421  | 4         | 94V-0                  | 42474-0431  | 4         | 94V-2                  | 42474-0441  | 4         | 94V-0                  |
|   | 15-06-0060  | 42474-0611  | 6         | 94V-2                  | 15-06-0061  | 42474-0621  | 6         | 94V-0                  | 42474-0631  | 6         | 94V-2                  | 42474-0641  | 6         | 94V-0                  |
|   | 15-06-0080  | 42474-0811  | 8         | 94V-2                  | 15-06-0081  | 42474-0821  | 8         | 94V-0                  | 42474-0831  | 8         | 94V-2                  | NOT TOOLED  | 8         | 94V-0                  |
| I | 15-06-0100  | 42474-1011  | 10        | 94V-2                  | 15-06-0101  | 42474-1021  | 10        | 94V-0                  | 42474-1031  | 10        | 94V-2                  | 42474-1041  | 10        | 94V-0                  |
|   | NOT TOOLED  | 42474-1211  | 12        | 94V-2                  | NOT TOOLED  | 42474-1221  | 12        | 94V-0                  | NOT TOOLED  | 12        | 94V-2                  | NOT TOOLED  | 12        | 94V-0                  |
|   | 15-06-0140  | 42474-1411  | 14        | 94V-2                  | 15-06-0141  | 42474-1421  | 14        | 94V-0                  | 42474-1431  | 14        | 94V-2                  | 42474-1441  | 14        | 94V-0                  |
|   | NOT TOOLED  | 42474-1611  | 16        | 94V-2                  | NOT TOOLED  | 42474-1621  | 16        | 94V-0                  | NOT TOOLED  | 16        | 94V-2                  | NOT TOOLED  | 16        | 94V-0                  |
| H | 15-06-0180  | 42474-1811  | 18        | 94V-2                  | 15-06-0181  | 42474-1821  | 18        | 94V-0                  | 42474-1831  | 18        | 94V-2                  | 42474-1841  | 18        | 94V-0                  |
|   | NOT TOOLED  | 42474-2011  | 20        | 94V-2                  | NOT TOOLED  | 42474-2021  | 20        | 94V-0                  | NOT TOOLED  | 20        | 94V-2                  | NOT TOOLED  | 20        | 94V-0                  |
|   | NOT TOOLED  | 42474-2211  | 22        | 94V-2                  | NOT TOOLED  | 42474-2221  | 22        | 94V-0                  | NOT TOOLED  | 22        | 94V-2                  | NOT TOOLED  | 22        | 94V-0                  |
|   | 15-06-0240  | 42474-2411  | 24        | 94V-2                  | 15-06-0241  | 42474-2421  | 24        | 94V-0                  | 42474-2431  | 24        | 94V-2                  | 42474-2441  | 24        | 94V-0                  |



|   |                               |   |  |                                       |  |   |                              |                        |                        |  |
|---|-------------------------------|---|--|---------------------------------------|--|---|------------------------------|------------------------|------------------------|--|
| ADD P/N 15-06-0081<br>EC NO: UCP2008-0703<br>DRW: LSC/HIDT<br>CHKD: SSOUSEK<br>APPR: FSM/TH<br>P1                             | QUALITY SYMBOLS<br>▽=0<br>▽=0 | DESCRIPTION<br>2007/10/10<br>2007/10/19<br>2007/10/22 | GENERAL TOLERANCES (UNLESS SPECIFIED)  |                                       | DIMENSION STYLE<br>IN/MM               |   | SCALE<br>---                 | DESIGN UNITS<br>METRIC | THIRD ANGLE PROJECTION |  |
|   |                               |   | 4 PLACES ± --- ± ---<br>3 PLACES ± --- ± ---<br>2 PLACES ± --- ± ---<br>1 PLACE ± --- ± ---<br>ANGULAR ± 5 ° | DRAWN BY<br>LEM<br>DATE<br>1999/03/24 | CHECKED BY<br>MB<br>DATE<br>1999/03/24 | APPROVED BY<br>RE<br>DATE<br>1999/03/24 | MATERIAL NO.<br>DOCUMENT NO. |                        | SHEET NO.<br>2 OF 2    |  |
| DRAFT WHERE APPLICABLE MUST REMAIN WITHIN DIMENSIONS  |                               |   | SEE CHART  |                                       | SD-42474-****                          |   | MOLEX INCORPORATED           |                        |                        |  |
| THIS DRAWING CONTAINS INFORMATION THAT IS PROPRIETARY TO MOLEX INCORPORATED AND SHOULD NOT BE USED WITHOUT WRITTEN PERMISSION |                               |   |  |                                       |  |   |                              |                        |                        |  |