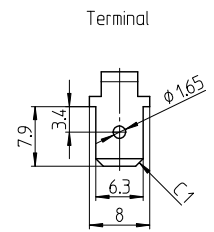
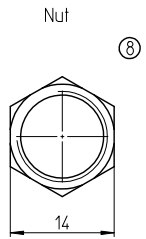
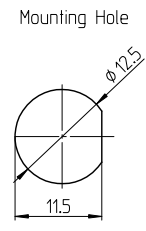


Example
 0610
 Year Month
 2006 October



Notes:
 Operating temperature -20°C to +70°C
 Operating Force MAX 29,4N
 All materials and finishes comply with RoHS directive

Function Chart	
10 12	10 12
7 9	7 9
4 6	4 6
1 3	1 3

Specifications						
Rating	Initial Contact Resistance	Insulation Resistance	Dielectric Strength	Endurance	TE PN	Part
AC 125V 20A AC 250V 20A DC 30V 20A	MAX 10 milliohms at DC 2 ~ 4V 1A	MIN 1000 M Ohms at DC 500V	AC 1,5kV/1 min (AC 1,8kV/1 sec)	electrically 20,000 cycles at 20 cycles/min (rated load resistive) mechanically 40,000 cycles at 20 cycles/min	8-6437630-0	A4TK15W04

Materials Chart			
1	Case	Phenol Resin	Black
2	F Contact	Silver alloy + Copper	
3	Common	C2700W	
4	Terminal	C2680R	
5	Frame	SPCC	EP-Fe/Zn4/CM
6	Bushing	C3602BD	EP-Cu/Ni3,Cr7b
7	Actuator	C3602BD	EP-Cu/Ni3b
8	Nut	C3602BD	EP-Cu/Ni3b
9	L Washer	SK	EP-Fe/Ni3b
10	Shaft	SUS	
11	Rubber seal	Rubber	Black
12	Insert molded rubber	Waterproofing Rubber	Transparent

PART LIST			
PART NO.	PART NAME	MATERIAL/SURFACE	OPTIONAL DESCRIPTION

TOLERANCES UNLESS OTHERWISE SPECIFIED ACCORDING TO ISO 8015 and ISO 2768-1		DIMENSIONS: mm	
test dimen. / Prüfmaß: () ; auxiliary dimen. / Hilfsmaß: () ; theor. dimen. / theor. Maß: () ;		production control dimen. / Fertigungscontr.mäß: () ; dimen. for measure technology / messtechn. rel. Maß: () ;	
DEPARTMENT	D&E	DRAWER	1107.2007 SA008712
CHECKED		APPROVED	
ECR-NO.:	DATE	NAME	INFO
SCALE:	NAME:		DWG NO.:
	Power Toggle Switch quad pole		1968503
	Panel Mounting Watertight		OPTIONAL NO.:
			Customer Drawing
REPLACEMENT FOR:	DWG LOC NO.:	IF SHEET: 1 OF 1	REVISION: A A 2

(ON) : momentary action
 OFF : mechanical position
 without electrical connection
 NONE : no mecanical position

THIS INFORMATION IS CONFIDENTIAL AND PROPRIETARY TO TYCO ELECTRONICS AUSTRIA GMBH AND ITS WORLDWIDE SUBSIDIARIES AND AFFILIATES. IT MAY NOT BE DISCLOSED TO ANYONE OTHER THAN TYCO ELECTRONICS PERSONNEL, WITHOUT WRITTEN AUTHORIZATION FROM TYCO ELECTRONICS AUSTRIA.