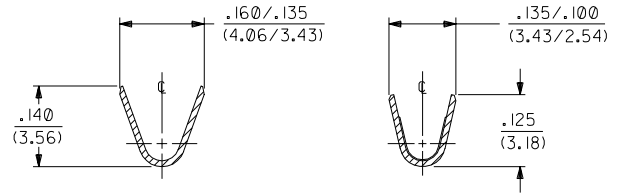
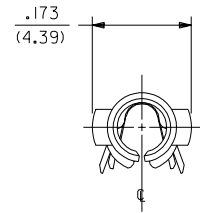
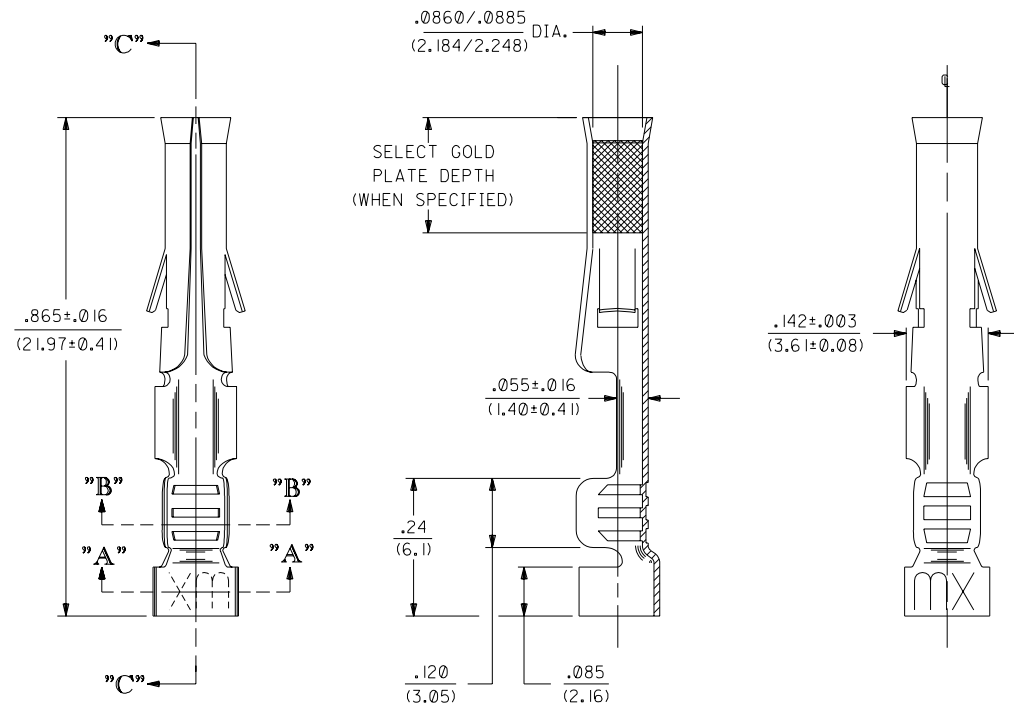


PART NO.	ENG. NO.	
02-09-1203	2151-A(P901)	
02-09-1204	2151-A(P901)LL	
02-09-5203	2151-A(P558)	OBSOLETE



SECTION "A-A" SECTION "B-B"

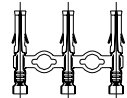


SECTION "C-C"

**LEGEND**  
 2151-A(\*\*\*\*)\*  
 P=PREPLATE BLANK=POSTPLATE  
 FORM BLANK=STD. CHAIN L=LOOSE  
 FINISH CODE

- NOTES:
- MATERIAL: PHOSPHOR BRONZE
  - FINISHES:  
 901 HOT TIN DIP .000020/(0.00051) MIN.  
 558 SELECT GOLD PLATE .000030/(0.00076) MIN. IN CONTACT AREA, OVER .000050/(0.00127) MIN. NICKEL OVERALL WITH .000010/(0.00025) MAX. GOLD FLASH OVERALL.
  - THIS PART CONFORMS TO PRODUCT SPEC. PS-43660-9999.
  - TERMINAL FOR USE WITH .093/(2.36) SERIES HOUSINGS AND WILL ACCEPT 18 THRU 22 AWG WIRE.
  - INSERTION FORCE: 3.5 LBS. AVG. WHEN TERMINAL IS INSERTED INTO AN .093 SERIES HOUSING.
  - CONTACT RETENTION: 20 LBS. MIN. FROM HOUSING.

CHAIN FORM FULL SCALE



D	REV BARREL ID UCP*2003-0819 SMITH 11/15/02
C	OBSOLETE P/N UCR2002-0270 COMERCI 01/10/1
B	REVISE PER ECR U5 0799 GC 2/13/95 RW
A	FINAL RELEASE ECR U1 0857 GC 1/21/92 RW

DIMENSIONS SHOWN (METRIC) INCH		▽ = 0	◻ = 0	REVISE ONLY ON CAD SYSTEM	
UNLESS OTHERWISE SPECIFIED TOLERANCES: ANGULAR ± 1/2°					
		INCH		METRIC	
3 PLATE	± .010	---	---	---	---
2 PLATE	± .014	± 0.25	---	---	---
1 PLATE	---	± 0.36	---	---	---
DRAFT WHERE APPLICABLE MUST REMAIN WITHIN DIMENSIONS					
DRWG. BY: GC	CHK'D. BY: RW	FILE NAME: SD2151X1.DGN	THIS DRAWING CONTAINS INFORMATION THAT IS PROPRIETARY TO MOLEX INC. AND SHOULD NOT BE USED WITHOUT WRITTEN PERMISSION.		
APP'D. BY: GWF	SCALE: 6 : 1	SEE CHART		SD-2151-*	SIZE: CP C
TITLE: CRIMP TERM., FEMALE .093/(2.36) DIA. FOR 18 THRU 22 AWG WIRE		MOLEX INCORPORATED		SHEET NO. 1 of 1	DATE 6/11/92
PART NO. SD-2151-*		DRWG. NO.		U.S.A.	