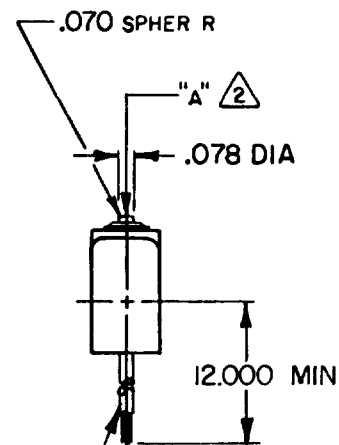
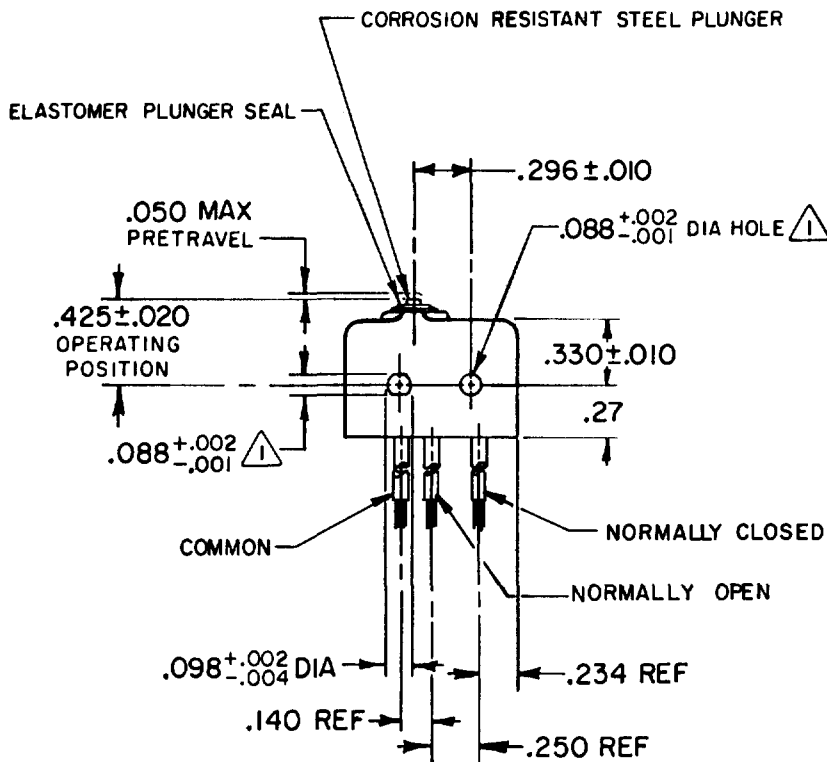
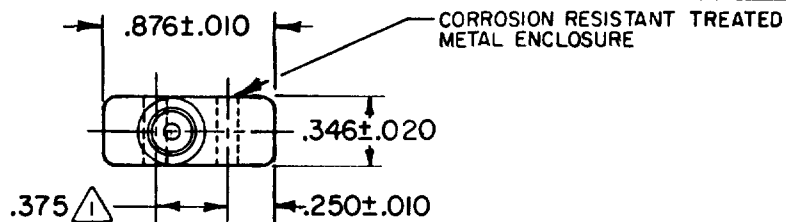


MICRO SWITCH

FREERPORT ILLINOIS, U.S.A
A DIVISION OF HONEYWELL
FED. MFG. CODE 91929

SWITCH - BASIC

CATALOG LISTING
ISE 7



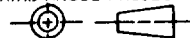
(3) NO. 20 WIRE LEAD
PER MIL-W-22759/11
EMBEDDED IN EPOXY
CASTING RESIN

NOTES

- 1 MOUNTING HOLES WILL ACCEPT .087 MAX DIA PINS OR SCREWS ON .375±.002 CENTERS
- 2 ACTUATION IN LINE WITH ARROW "A" IS RECOMMENDED
- 3 WEIGHT OF SWITCH ONLY IS .26 OZ MAX WEIGHT OF SWITCH WITH WIRE LEADS IN .65 OZ MAX
- 4 BASIC SWITCH HAS 24K SOLID GOLD CONTACT MATERIAL

THIS DRAWING COVERS A PROPRIETARY ITEM AND IS THE PROPERTY OF MICRO SWITCH, A DIVISION OF HONEYWELL. THIS DRAWING IS NOT TO BE COPIED OR USED WITHOUT THE APPROVAL OF MICRO SWITCH.

THIRD ANGLE PROJECTION



CHARACTERISTICS

OPERATING FORCE ----- 5-17 OZ
RELEASE FORCE ----- 4 OZ MIN
RELEASE TRAVEL ----- .004 MIN
DIFFERENTIAL TRAVEL ----- .004 MAX
OVERTRAVEL ----- .003 MIN

ELECTRICAL DATA

CONTACT ARRANGEMENT
S P D T
10 VDC ----- 0.5 AMP
30 VOLTS DC RATING
INDUCTIVE ----- SEA LEVEL - 1/2 AMP
50,000 FT - 1/2 AMP
RESISTIVE ----- SEA LEVEL - 1 AMP
50,000 FT - 1 AMP
MAXIMUM INRUSH ----- 2 AMP

SCALE FULL

DO NOT SCALE PRINT

TOLERANCES

APPLY TO DESIGN UNITS. CONVERSIONS ARE ONLY FOR REFERENCE. UNLESS NOTED, TOLERANCES ARE ±

	DIM. mm	TOL. mm/in	DIM. in	TOL. mm/in
NO PLACES	X	1/64	X	0.001
ONE PLACE	X,X	0.4/016	X,X	0.001
TWO PLACES	X,XX	0.19/008	X,XX	0.001
THREE PLACES	X,XXX		X,XXX	0.13/008

BI METRIC

US CUSTOMARY

DESIGN UNITS

WEIGHT

ISE 7

PAGE 10F 1

M

DRAWING NUMBER

86

ISSUE 7

REPLACES

RELEASE NO. PR-2961

CHECK

REVISIONS

A	CO 51463	G J W	14 JUL 82
B	CO57041A	C J H	21 MAR 85
C	CO94274	D L M	MAR 99

CHECK

22 JUL 82

FORMTEK

FO-52848-A

DRAWN

CHECK

14 JUL 82