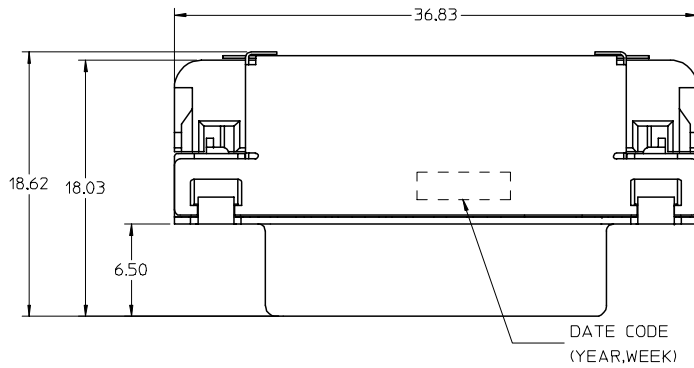


J
I
H
G
F
E
D
C
B
A

J
I
H
G
F
E
D
C
B
A



NOTES:

1.MATERIALS:

- FRONT SHIELD -- DEEP DRAW STEEL.
- BACK SHIELD -- STAINLESS STEEL.
- HOUSING --GLASS FILLED POLYMER,WHITE/NATURE,UL 94V-0.
- TAIL ALIGNER -- GLASS FILLED POLYMER,WHITE/NATURE,UL 94V-0.
- CONTACT -- COPPER ALLOY.
- MICROCROSS GROUND -- COPPER ALLOY.

2.PLATING : SEE SHEET 2

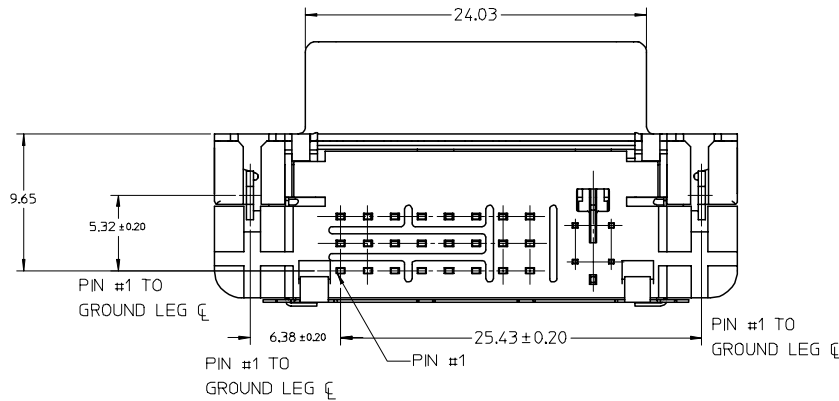
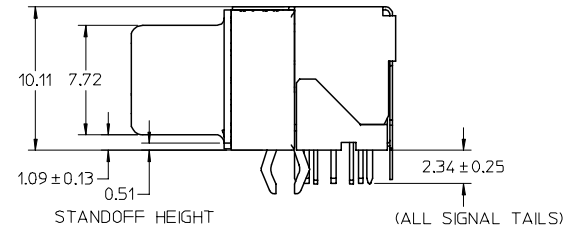
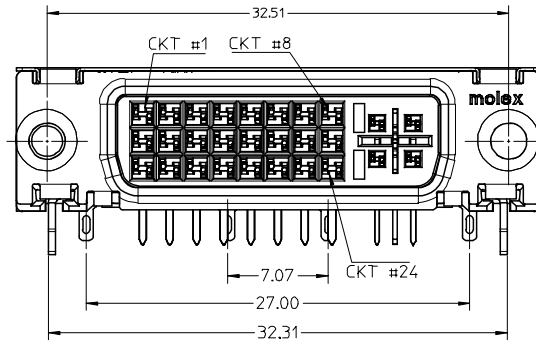
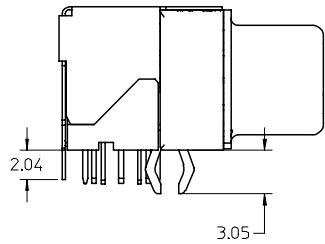
3.PRODUCT CONFORMS TO MOLEX PRODUCT SPECIFICATION NUMBER PS-74320-001

4.SEE SHEET 2 FOR RECOMMENDED PANEL CUT-OUT AND P.C.B.LAYOUT.

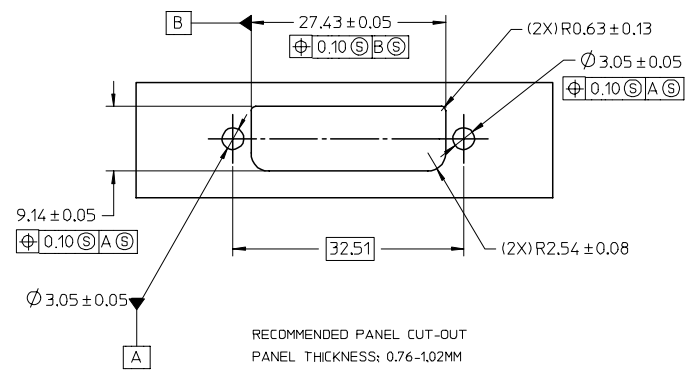
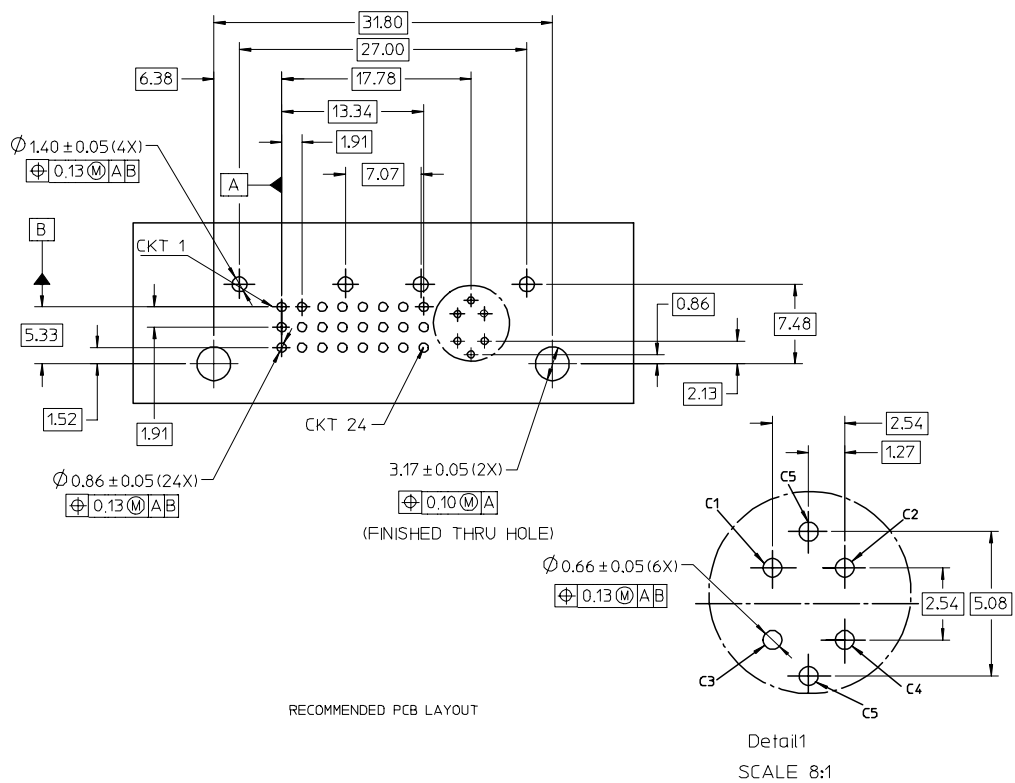
5.PARTS WILL BE PACKAGED IN TRAYS PER PK-74320-044.

6.PRODUCT CONFORMS TO DDWG DVI SPECIFICATION,REFER TO THIS SPECIFICATION FOR CONNECTOR MATING DIMENSIONS.

7.MOUNTING HARDWARE IS MOLEX P/N 88780-6066.REFER TO PRODUCT SPECIFICATION NUMBER PS-74320-001 FOR THE APPLICATION TORQUE REQUIREMENT FOR ASSEMBLING MOUNTING HARDWARE.



| | | | | | | | | |
|--|-----------------------------------|---------------------------------------|---|-----------|-------------------------|-------------------------|--|--|
| NEW RELEASE EC NO: SH2005-0402 DRWN: LBAO 2005/07/29 CHKD: 2005/07/29 APPR: YTYAP 2005/07/29 | QUALITY SYMBOLS ▽ = 0 ◻ = 0 | GENERAL TOLERANCES (UNLESS SPECIFIED) | | SCALE 4:1 | DESIGN UNITS METRIC | THIRD ANGLE PROJECTION | REVISE ON CAD ONLY | |
| | | m | mm | INCH | DIMENSION STYLE MM ONLY | | TITLE | |
| | | 4 PLACES | ± --- | ± --- | DRAWN BY LBAO | DATE 2005/06/17 | DVI-I RIGHT ANGLE RECEPTACLE CONNECTOR W/SHIELDING & W/O SCREW | |
| | | 3 PLACES | ± --- | ± --- | CHECKED BY | DATE | MOLEX INCORPORATED | |
| 2 PLACES | ± 0.25 | ± --- | DRAFT WHERE APPLICABLE MUST REMAIN WITHIN DIMENSIONS | | APPROVED BY | MATERIAL NO. 74320-1033 | DOCUMENT NO. SD-74320-133 | |
| 1 PLACE | ± 0.25 | ± --- | THIS DRAWING CONTAINS INFORMATION THAT IS PROPRIETARY TO MOLEX INCORPORATED AND SHOULD NOT BE USED WITHOUT WRITTEN PERMISSION | | SHEET NO. 1 OF 2 | | | |



PLATING OPTIONS:
 PLATING OPTION #1:
 FRONT SHIELD -- 150u"/3.75um MIN. BRIGHT TIN OVER
 50u"/1.27um MIN. NICKEL OVER COPPER FLASH.
 BACK SHIELD -- 50u"/1.27um MIN. BRIGHT TIN OVER
 50u"/1.27um MIN. NICKEL OVER COPPER FLASH.

.075"/1.91mm CONTACTS -- 30u"/0.75um MIN. SELECT GOLD AND
 100u"/2.50um MIN. SELECT TIN
 OVER 50u"/1.27um MIN. NICKEL OVERALL.

.100"/2.54mm CONTACTS -- 30u"/0.75um MIN. SELECT GOLD AND
 100u"/2.50um MIN. SELECT TIN.
 OVER 50u"/1.27um MIN. NICKEL OVERALL.

MICROCROSS GROUND -- 30u"/0.75um MIN. SELECT GOLD AND
 100u"/2.50um MIN. SELECT TIN.
 OVER 50u"/1.27um MIN. NICKEL OVERALL.

| | | | | | | | |
|--|-----------------------------------|---------------------------------------|--|---|---------------------|--|--------------------|
| NEW RELEASE EC NO: SH2005-0402 DRWN: LBAO 2005/07/25 CHKD: 2005/07/29 APPR: YTYAP 2005/07/29 | QUALITY SYMBOLS ▽ = 0 ◇ = 0 | GENERAL TOLERANCES (UNLESS SPECIFIED) | | SCALE 4:1 | DESIGN UNITS METRIC | THIRD ANGLE PROJECTION | REVISE ON CAD ONLY |
| | | | | DIMENSION STYLE MM ONLY | | TITLE | |
| | | 4 PLACES ± --- ± --- | | DRAWN BY DATE | | DVI-I RIGHT ANGLE RECEPTACLE CONNECTOR W/SHIELDING & W/O SCREW | |
| | | 3 PLACES ± --- ± --- | | LBAO 2005/06/17 | | | |
| 2 PLACES ± 0.25 ± --- | | CHECKED BY DATE | | MOLEX INCORPORATED | | MATERIAL NO. DOCUMENT NO. SHEET NO. | |
| 1 PLACE ± 0.25 ± --- | | ANGULAR ±1/2° | | APPROVED BY DATE | | 74320-1033 SD-74320-133 2 OF 2 | |
| DRAFT WHERE APPLICABLE | | MUST REMAIN WITHIN DIMENSIONS | | THIS DRAWING CONTAINS INFORMATION THAT IS PROPRIETARY TO MOLEX INCORPORATED AND SHOULD NOT BE USED WITHOUT WRITTEN PERMISSION | | | |