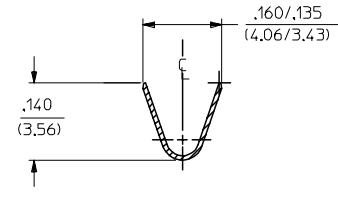
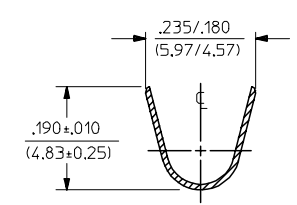
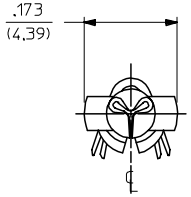


| PART NO. | ENG. NO. | DIM. "D" DIA. | INSULATION CRIMP PER |
|------------|----------------|-----------------------|----------------------|
| 02-09-8103 | 1973-A(P901) | .091±.003/(2.31±0.08) | SECTION "A-A"-1 |
| 02-09-8104 | 1973-A(P901)L | .091±.003/(2.31±0.08) | SECTION "A-A"-1 |
| 02-09-8107 | 1973-1A(105) | .094±.003/(2.39±0.08) | SECTION "A-A"-1 |
| 02-09-8108 | 1973-2A(P901) | .091±.003/(2.31±0.08) | SECTION "A-A"-2 |
| 02-09-8109 | 1973-2A(P901)L | .091±.003/(2.31±0.08) | SECTION "A-A"-2 |
| - | - | - | - |
| - | - | - | - |



SECTION "A-A"-2
SPECIAL DOUBLE WIRE CRIMP FOR 1973-2 VERSION

SECTION "A-A"-1
STANDARD VERSION FOR 1973 & 1973-1 VERSIONS

LEGEND

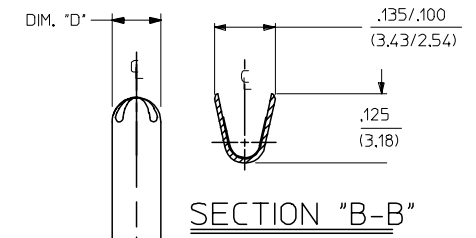
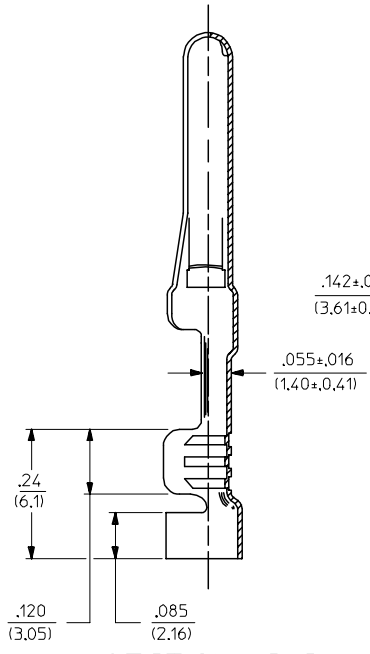
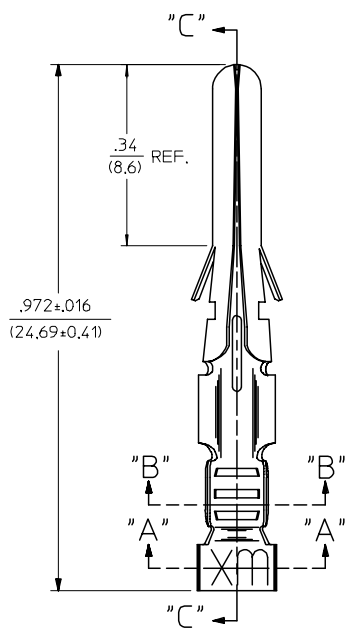
1973-*A(* * * * *)*

VERSION
BLANK=ORIGINAL
1-MODIFIED PIN DIA.
2-LARGER INSUL. CRIMP

FORM
BLANK=CHAIN
L=LOOSE

P-PREPLATE
BLANK=POSTPLATE

FINISH CODE



SECTION "B-B"

SECTION "C-C"

- NOTES:
- MATERIAL: CARTRIDGR BRASS ALLOY, .010/(0.25) THICK.
 - FINISHES, PER ES-88:
 - 105 TIN PLATE .000300/(0.00762) MIN, OVER .000100/(0.00254) MIN. COPPER OVERALL.
 - 901 HOT TIN DIP .000020/(0.00051) MIN.
 - * THE PRIMARY SHIPPING CARTON WILL BE LABELED, "COMPLIANT TO RoHS DIRECTIVE 2002/95/EC AND ANNEX II OF DIRECTIVE 2000/53/EC", AND CARTONS WITHOUT THIS LABEL MAY CONTAIN PRODUCT WITH TIN-LEAD.
 - PACKAGING INFORMATION: NOT AVAILABLE
 - TERMINALS FOR USE WITH .093/(2.36) SERIES HOUSINGS. 1973 & 1973-1 VERSIONS WILL ACCEPT 18 THRU 22 AWG WIRE. 1973-2 VERSION IS FOR USE WITH 14 THRU 18 AWG WIRE AND DOUBLE CRIMPS OF ONE 16 AND ONE 18 AWG OR TWO 18 AWG WIRES.
 - INSERTION FORCE: 3.5 LBS. MAX. WHEN TERMINAL IS INSERTED INTO .124/(3.15) DIA. CORE HOLE.
 - CONTACT RETENTION: 20 LBS. MIN.
 - FLOAT: TERMINAL MAY ROTATE IN HOUSING, BUT SHOULD NOT SPIN FREELY WHEN WIRE IS ROLLED BETWEEN FINGERS.

| | |
|----|---|
| D | TRANSLATE TO ME10 UCP2005-0722 RHOULTS 10/04/04 |
| C2 | ADD .34 DIM. PER ECR U3 1350 03/19/93 RW |
| C1 | FINAL RELEASE ECR U1 1027 03/17/92 RW |

| | | | | | | | | |
|---|---------------------|---|--|--|--------------------|---------------------|----------------------|------------------------|
| TRANSLATE TO ME10 EC NO: UCP2005-0722 DRAWN/RHOULTS 2004/10/06 CHKD/FSM/TH 2004/10/06 APPR/FSM/TH 2004/10/06 | QUALITY SYMBOLS | GENERAL TOLERANCES (UNLESS SPECIFIED) | | DIMENSION STYLE IN/MM | | SCALE 6:1 | DESIGN UNITS INCH | THIRD ANGLE PROJECTION |
| | | 4 PLACES ± --- ± --- 3 PLACES ± --- ± .010 2 PLACES ± 0.25 ± .014 1 PLACE ± 0.35 ± | mm INCH ± --- ± --- ± .010 ± .014 ± ± | DRAWN BY GWC | DATE 1992/06/17 | CHECKED BY RW | DATE 1992/06/17 | |
| DRAFT WHERE APPLICABLE MUST REMAIN WITHIN DIMENSIONS | | SEE CHART | | MATERIAL NO. DOCUMENT NO. SD-1973-* | | SHEET NO. 1 OF 1 | | MOLEX INCORPORATED |
| THIS DRAWING CONTAINS INFORMATION THAT IS PROPRIETARY TO MOLEX INCORPORATED AND SHOULD NOT BE USED WITHOUT WRITTEN PERMISSION | | | | | | | | |