

## FEATURES AND SPECIFICATIONS

### Features and Benefits

- Sizes 6 to 64 circuits
- Contact and plating orientation according to DIN 41651
- North/south contact orientation avoids overstress
- High pin retention
- Polarized
- Friction lock

### Reference Information

Product Specification: PS-99020-0001  
 Packaging: Tray  
 Mates With: 90142  
 Designed In: Inches

### Electrical

Voltage: 350V max.  
 Current: 3.0A  
 Contact Resistance: 20mΩ max.  
 Insulation Resistance: 1000 MΩ min.

### Mechanical

Contact Retention to Housing: 20N (2.0kgf) min.  
 Mating Force: 1N max. Gold and 3N max. Tin  
 Unmating Force: 0.2N min. Gold and 0.2N min. Tin  
 Nominal Force: 1N

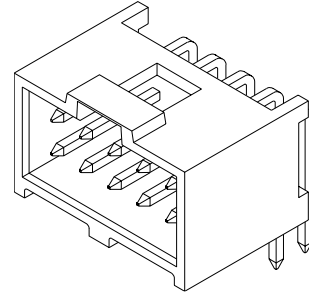
### Physical

Housing: Black glass-filled polyester, UL 94V-0  
 Contact: Copper Alloy, 0.64mm (.025") square pins  
 Plating: See Table  
 Operating Temperature: -55 to +125°C

# molex® 2.54mm (.100") Pitch C-Grid III™ Shrouded Header

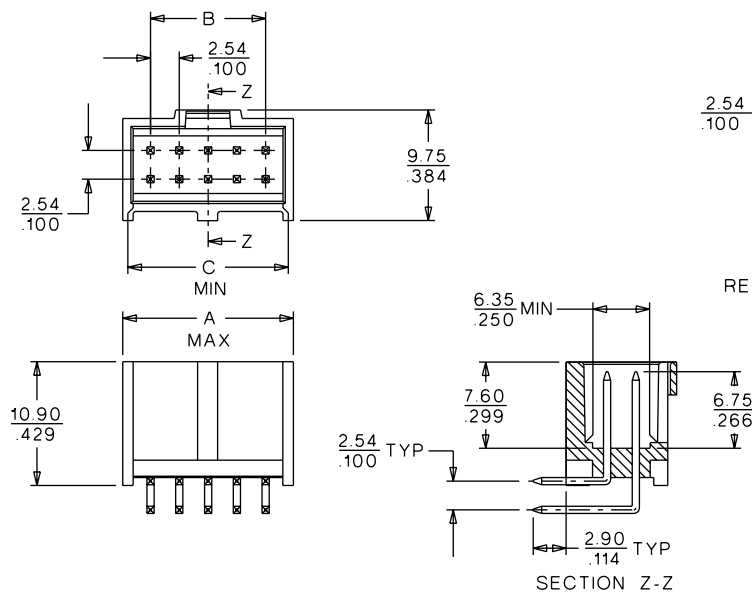
## 90130

## Dual Row, Right Angle Fully Loaded

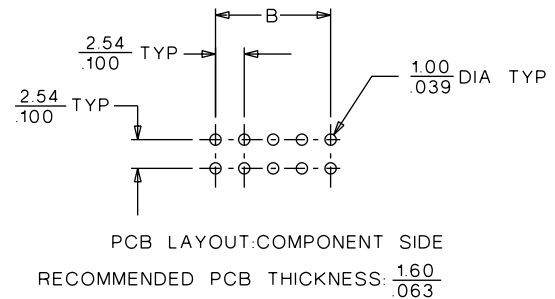


2.54mm (.100") Pitch

## CATALOG DRAWING (FOR REFERENCE ONLY)



**Not For Use With Molex SL™ Components**



## ORDERING INFORMATION AND DIMENSIONS

Circuits	Order No.			Dimension		
	Plating A	Plating E	Plating F	A	B	C
6	90130-3106	90130-3206	90130-3306	10.34 (.407)	5.08 (.200)	7.92 (.312)
8	90130-3108	90130-3208	90130-3308	12.88 (.507)	7.62 (.300)	10.46 (.412)
10	90130-3110	90130-3210	90130-3310	15.42 (.607)	10.16 (.400)	13.00 (.512)
12	90130-3112	90130-3212	90130-3312	17.96 (.707)	12.70 (.500)	15.54 (.612)
14	90130-3114	90130-3214	90130-3314	20.50 (.807)	15.24 (.600)	18.08 (.712)
16	90130-3116	90130-3216	90130-3316	23.04 (.907)	17.78 (.700)	20.62 (.812)
18	90130-3118	90130-3218	90130-3318	25.58 (1.007)	20.32 (.800)	23.16 (.912)
20	90130-3120	90130-3220	90130-3320	28.12 (1.107)	22.86 (.900)	25.70 (1.012)
24	90130-3124	90130-3224	90130-3324	33.20 (1.307)	27.94 (1.100)	30.78 (1.212)

Circuits	Order No.			Dimension		
	Plating A	Plating E	Plating F	A	B	C
26	90130-3126	90130-3226	90130-3326	35.74 (1.407)	30.48 (1.200)	33.32 (1.312)
30	90130-3130	90130-3230	90130-3330	40.82 (1.607)	35.56 (1.400)	38.40 (1.512)
34	90130-3134	90130-3234	90130-3334	45.90 (1.807)	40.64 (1.600)	43.48 (1.712)
38	90130-3138	90130-3238	90130-3338	50.98 (2.007)	45.72 (1.800)	48.56 (1.912)
40	90130-3140	90130-3240	90130-3340	53.52 (2.107)	48.26 (1.900)	51.10 (2.012)
50	90130-3150	90130-3250	90130-3350	66.22 (2.607)	60.96 (2.400)	63.80 (2.512)
60	90130-3160	90130-3260	90130-3360	78.92 (3.107)	73.66 (2.900)	76.50 (3.012)
64	90130-3164	90130-3264	90130-3364	84.00 (3.307)	78.74 (3.100)	81.58 (3.212)

For other available circuit sizes contact Molex

Plating A: 4µm (160µ") Tin/Lead over Nickel

Plating E: 0.38µm (15µ") selective Gold over Nickel and 4µm (160µ") Tin/Lead over Nickel

Plating F: 0.76µm (30µ") selective Gold over Nickel and 4µm (160µ") Tin/Lead over Nickel