

MICRO SWITCH

FREEMONT ILLINOIS, U.S.A.
A DIVISION OF HONEYWELL
FED. MFG. CODE 91929

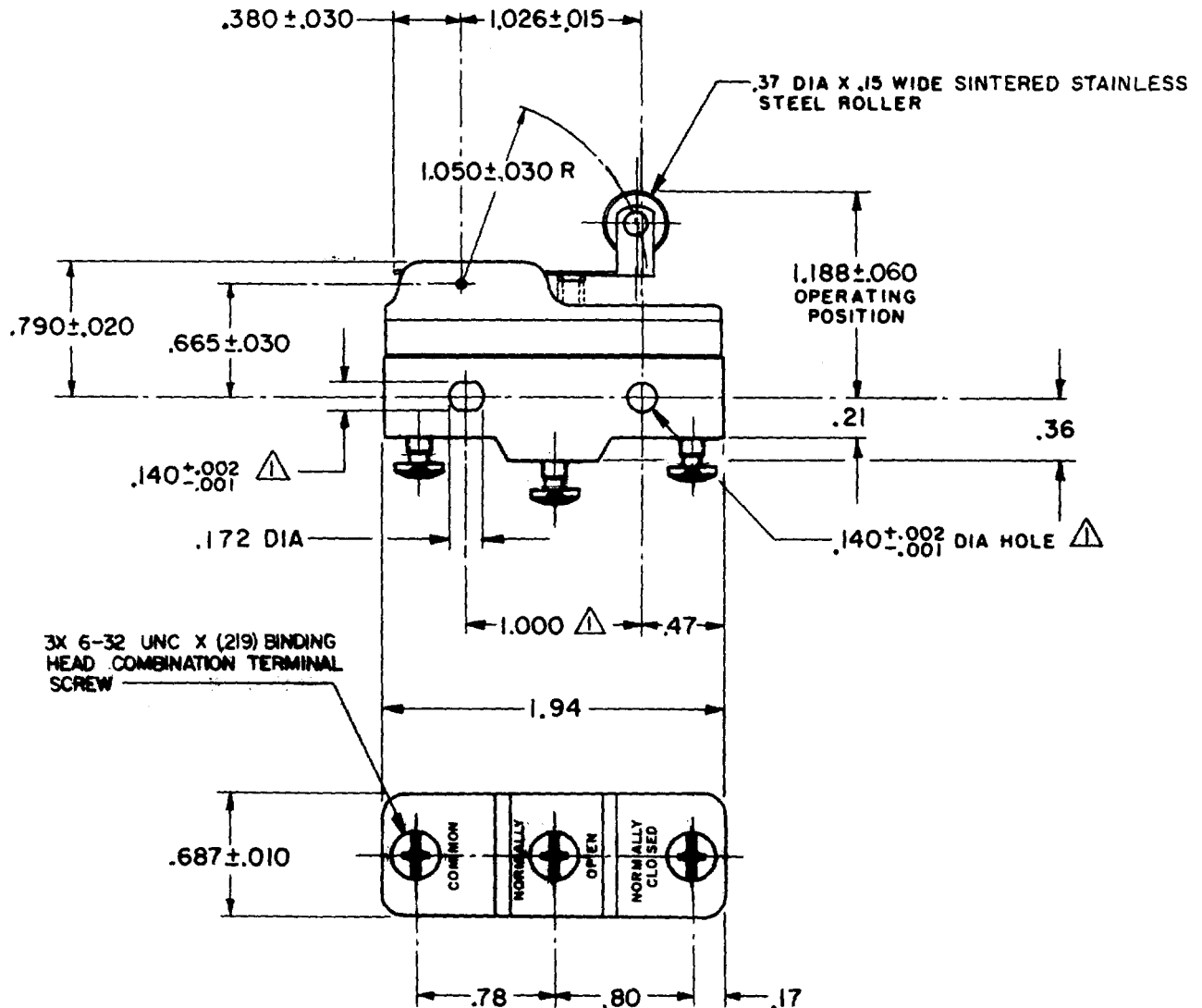
SWITCH-BASIC

CATALOG LISTING

BZ-2RW82279-A21

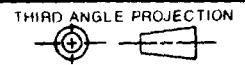
APT8786

M BZ-2RW82279-A21
 DRAWING NUMBER
 9
 ISSUE
 REVISIONS
 A CO 60961 TRF JAN 87
 B CO 70184-6 GJW 10 MAR 92
 C CO 71827-1 DKG 19 MAY 93
 D CO 75422 JWB 2 DEC 93
 E CO 75204B DAW 1 FEB 94
 F CO 77589 MAM 29 MAR 94
 G C093346
 DLT 17 SEP 98
 H 0017579
 KRB 08DEC05
 K A G I 6 MAY 83
 CHECK C E C
 FORMTEK
 FO-52848-A
 DRAWN
 RELEASE NO. PR-12165 REPLACES



NOTE
 ▲ MOUNTING HOLES WILL ACCEPT PINS OR SCREWS OF .139 MAX DIA ON 1.000 ± .002 CENTERS

THIS DRAWING COVERS A PROPRIETARY ITEM AND IS THE PROPERTY OF MICRO SWITCH, A DIVISION OF HONEYWELL. THIS DRAWING IS NOT TO BE COPIED OR USED WITHOUT THE APPROVAL OF MICRO SWITCH.



CHARACTERISTICS	
OPERATING FORCE	-----6 OZ MAX
RELEASE FORCE	-----1 1/2 OZ MIN
DIFFERENTIAL TRAVEL	-----.020 MAX
OVERTRAVEL	-----.049 MIN

ELECTRICAL DATA	
CONTACT ARRANGEMENT S P D T	
CODE L96 15A-125, 250 OR 480 VAC 1/8 HP-125 VAC; 1/4 HP-250 VAC 1/2 A-125 VDC; 1/4 A-250 VDC	
L288 L315 L306	
16A 250V ~ T85 5E4	

SCALE FULL			
DO NOT SCALE PRINT			
TOLERANCES			
APPLY TO DESIGN UNITS. CONVERSIONS ARE ONLY FOR REFERENCE. UNLESS NOTED, TOLERANCES ARE ±			
DIM.	TOL.	DIM.	TOL.
mm	mm/in	in	mm/in
NO PLACES	X	1/04	
ONE PLACE	X X	0.4/018	X X 0.8/03
TWO PLACES	X X X	0.15/008	X X X 0.387/015
THREE PLACES	X X X X		X X X X 0.137/005
ANGLES			
SI METRIC		US CUSTOMARY	
DESIGN UNITS <input type="checkbox"/>		<input checked="" type="checkbox"/>	
WEIGHT		.076 LB	