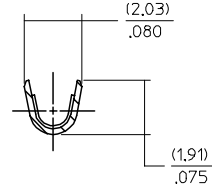
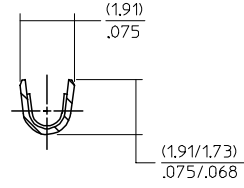
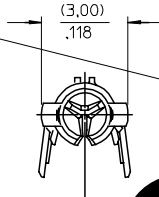
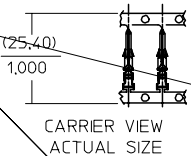


PART NO. ENG. NO.

02-06-2131	1854-(901)
02-06-2132	1854-(901)L
02-06-6137	1854-(591)
02-06-6136	1854-(591)L
02-06-6138	1854-(561)
02-06-6139	1854-(561)L
02-06-6130	1854-(550)
02-06-6135	1854-(550)L
02-06-6143	1854-(228)
02-06-6144	1854-(228)L



SECT. "B-B"

SECT. "C-C"

LEGEND

1854-(****)*

- P=PREPLATE
- BLANK=POSTPLATE
- FINISH CODE
- FORM
- BLANK=CHAIN
- L=LOOSE

(.25)
.010 MAX.
CARRIER CUT OFF

"A"

(16.8)
.66

(.25) MA
.010
CARRIER

"A"

SELECT GOLD
PLATE DEPTH
(WHEN SPECIFIED)

SECT. "A-A"

AP	REMV Sn/Pb PLATING UCP2004-2097 RHOLTS 5/07/04
AN	OBsolete P/N UCR2002-0270 COMERC 01/9/27
AM2	OBsolete -675 & -675L ECR U6 0358 9/15/95 RW
AM1	ADD -(6031) PER ERO #30605 11-5-90 RW
AM	REV. & REDRAWN PER ECR 10372 GEP 9-21-87 RW