

VERT
XIII

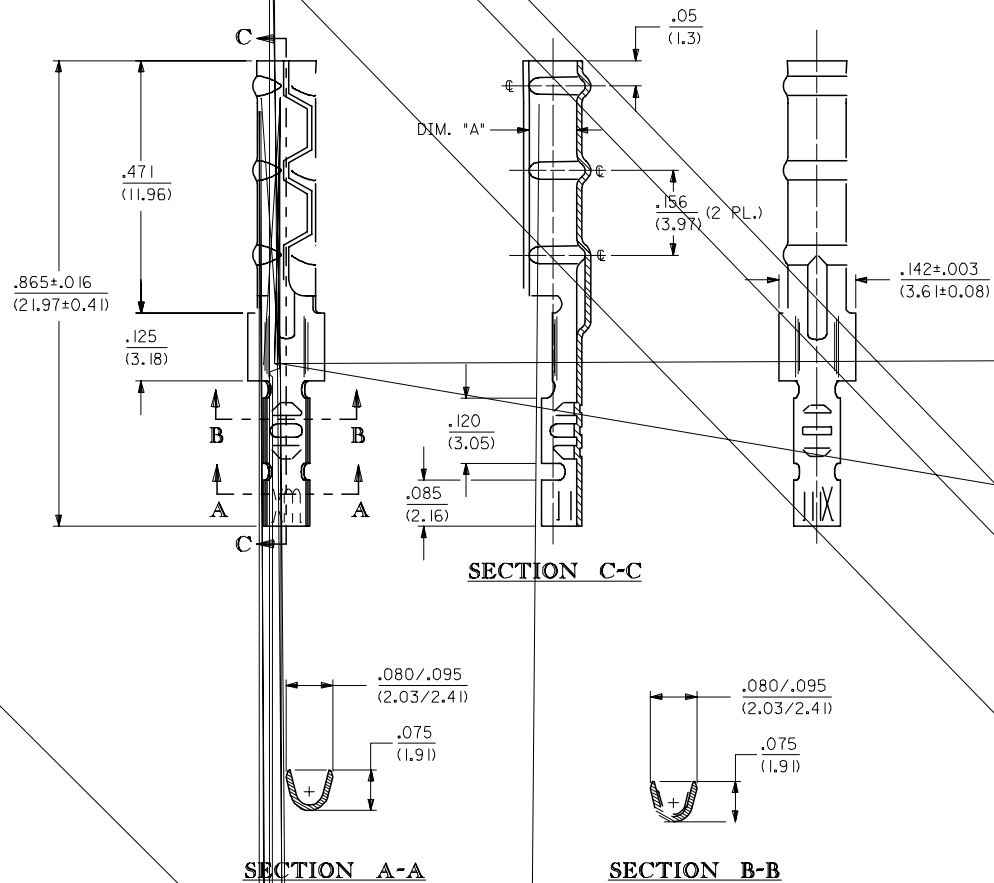
UPDATE TITLE BLOCK



SITE CHART

| CHART | | |
|-------------|-------------|--------------------------|
| PART NUMBER | ENG. NUMBER | DIMENSION "A" (DIA.) |
| 02-08-1102 | 1881-2L IA | |
| 02-08-1101 | 1881-2C IA | .085/.090 (2.16/2.29) |
| 02-08-1106 | 1881-2L IB | |
| 02-08-1105 | 1881-2C IB | .083/.088 (2.11/2.24) |
| 02-08-1104 | 1881-3L IA | |
| 02-08-1103 | 1881-3C IA | .085/.090 (2.16/2.29) |
| 02-08-1107 | 1881-4C IA | |
| 02-08-1108 | 1881-4L IA | .085/.090 (2.16/2.29) |

1881-3*** TERMINAL SHOWN (24-30 AWG)
SEE SHEET 1 FOR 1881-2*** TERMINAL



LEGEND

1881-****

CRIMP STYLE
2 = 16-24 AWG
3 = 24-30 AWG
4 = 22 AWG

FORM
L = LOOSE
C = CHAIN

BARREL I.D.
A = .085/.090 BARREL I.D.

FINISH
(*P* PRECEDING FINISH NO. DESIGNATES PREPLATED MATERIAL)
1 = P901 - HOT TIN DIP: .000020/(0.00051) MIN.

- NOTES:
1. MATERIAL: CARTRIDGE BRASS
 2. FINISH: SEE LEGEND
 3. PRODUCT SPECIFICATION: N/A
 4. PACKAGING SPECIFICATION: N/A
 5. 1881 "CLASPCON" SERIES TERMINAL WITH THE STANDARD BARREL I.D. IS INTENDED FOR MATING TO .093/(2.36) DIA. P.C. BOARD PINS.
 6. INITIAL EXTRACTION FORCE TO BE 4.0±1.5 LBS. FROM AN .093/.092 / (2.36/2.34) DIA. PIN AND 2 LBS. MIN. AFTER THE 10TH EXTRACTION ON STANDARD BARREL I.D.