



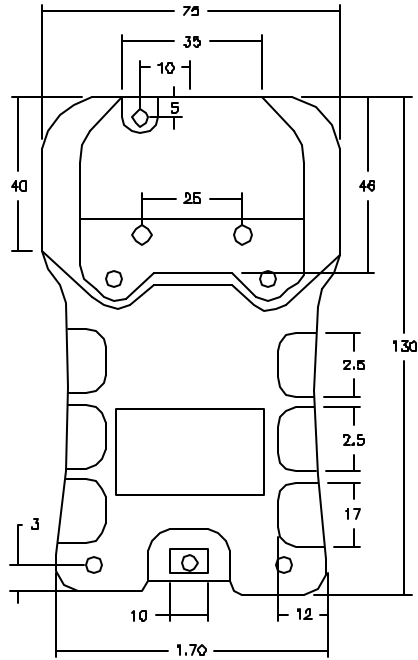
ALL RIGHTS RESERVED. NO PORTION OF THIS PUBLICATION, WHETHER IN WHOLE OR IN PART CAN BE REPRODUCED WITHOUT THE EXPRESS WRITTEN CONSENT OF SPC TECHNOLOGY.

SPC-F008.DWG

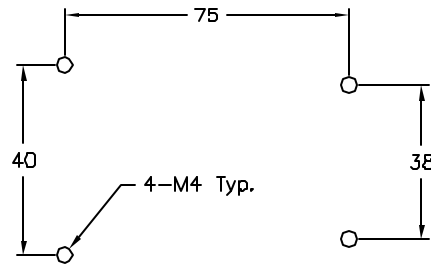
REVISIONS

DOC. NO. SPC-F005 * Effective: 7/8/02 * DCP No: 1398

DCP #	REV	DESCRIPTION	DRAWN	DATE	CHECKD	DATE	APPRVD	DATE
1994	A	RELEASED	JN	10/31/08	JWM	10/31/08	JWM	10/31/08
2046	B	Mounting hole dim. added	JN	05/14/08	JWM	05/14/08	JWM	05/14/08



Mounting Holes Layout



SPC P/N	Test Range			Resolution			L	W	H
	Kgf	N	Lbf	Kgf	N	Lbf			
SLD 20 FGN	20	200	50	0.01	0.1	0.01	46	45.8	28.6
SLD 5 FGN	5	50	10	0.001	.01	0.001			
SLD 50 FGN	50	500	100	0.01	.1	0.01			

Accuracy: Max. measurement range 0.5 % + 1/2 digit (at room temperature)
 Power Supply: Ni-cd battery 4.8V 600 mAh

DISCLAIMER:
 ALL STATEMENTS AND TECHNICAL INFORMATION CONTAINED HEREIN ARE BASED UPON INFORMATION AND/OR TESTS WE BELIEVE TO BE ACCURATE AND RELIABLE. SINCE CONDITIONS OF USE ARE BEYOND OUR CONTROL, THE USER SHALL DETERMINE THE SUITABILITY OF THE PRODUCT FOR THE INTENDED USE AND ASSUME ALL RISK AND LIABILITY WHATSOEVER IN CONNECTION THEREWITH.

TOLERANCES:
 UNLESS OTHERWISE SPECIFIED, DIMENSIONS ARE FOR REFERENCE PURPOSES ONLY.

DRAWN BY:	DATE:
Jason Nash	10/31/08
CHECKED BY:	DATE:
Jeff McVicker	10/31/08
APPROVED BY:	DATE:
Jeff McVicker	10/31/08

DRAWING TITLE: Digital Force Gauge			
SIZE A	DWG. NO. Ta-971	ELECTRONIC FILE Ta-971.dwg	REV B
SCALE: NTS		U.O.M.: INCHES [mm]	SHEET: 1 OF 1