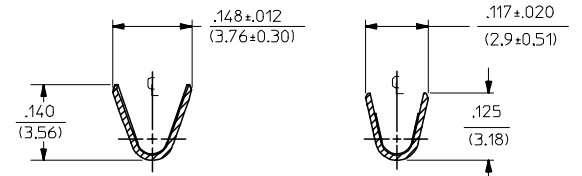
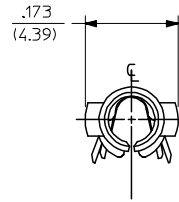
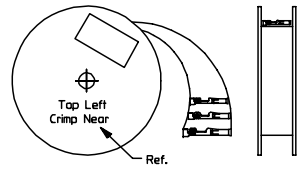


| PART NO. | ENG. NO. |
|------------|---------------|
| 02-09-1119 | 1381-A(P901)L |
| 02-09-1117 | 1381-A(P901) |
| 02-09-1115 | 1381-A(P901)1 |
| 02-09-5133 | 1381-A(P591)L |
| 02-09-5130 | 1381-A(P591) |
| 02-09-5142 | 1381-A(P550)L |
| 02-09-5143 | 1381-A(550) |



SECT. "A-A"

SECT. "B-B"

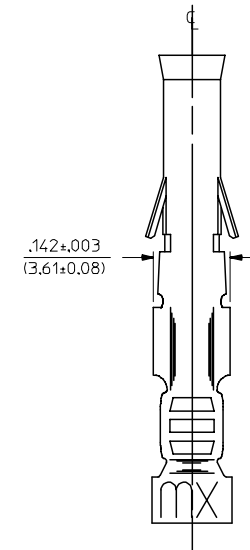
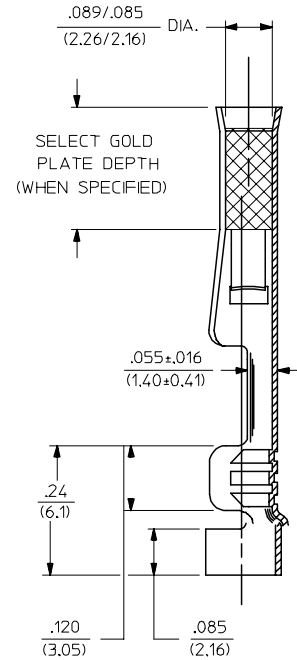
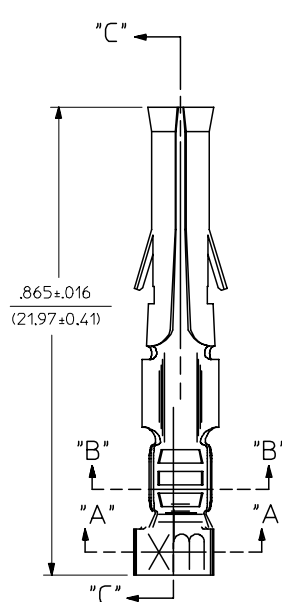


STANDARD CHAIN

LEGEND

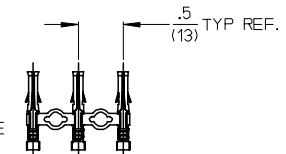
1381-A(****)*

- FORM BLANK = STD. CHAIN
- 1 = STD. CHAIN WITH INTERLEAF PAPER
- L = LOOSE
- FINISH CODE
- P = PREPLATE
- BLANK = POSTPLATE



SECT. "C-C"

CHAIN FORM FULL SCALE



NOTES:

- MATERIAL: BRASS
- FINISH:
 - 901 HOT TIN DIP .000020/(0.00051) MIN.
 - 591 SELECT GOLD PLATE .000050/(0.00127) MIN. IN CONTACT AREA, OVER .000050/(0.00127) MIN. NICKEL OVERALL WITH .000010/(0.00025) MAX. GOLD FLASH OVERALL.
 - 550 SELECT GOLD PLATE .000015/(0.00038) MIN. IN CONTACT AREA, OVER .000030/(0.00076) MIN. NICKEL OVERALL WITH .000010/(0.00025) MAX. GOLD FLASH OVERALL.
- PRODUCT SPECIFICATION PS-43660-9999.
- PACKAGING INFORMATION: NOT AVAILABLE
- TERMINAL FOR USE WITH .093/(2.36) SERIES HOUSINGS AND WILL ACCEPT 18-22 AWG WIRE
- INSERTION FORCE: 3.5 LBS. MAX. WHEN TERMINAL IS INSERTED INTO AN .093 SERIES HOUSING.
- TERMINAL RETENTION: 20 LBS. MIN. FROM HOUSING.

| | | | | | | | | | | |
|--|-----------------------------|---------------------------------------|------------|-----------------|------------|---|--------------|------------------------|--|--|
| REMOVE DIMPLE P/NS EC NO: UCP2006-2900 DRAWN/PRI/DOR 2006/06/29 CHKD: AEL/HAG 2006/07/05 APPR: FSM/TH 2006/07/05 | QUALITY SYMBOLS =0 =0 | GENERAL TOLERANCES (UNLESS SPECIFIED) | | DIMENSION STYLE | | SCALE | DESIGN UNITS | THIRD ANGLE PROJECTION | | |
| | | mm | INCH | IN/MM | | 6:1 | INCH | | | |
| | | 4 PLACES ± --- ± --- | | DRAWN BY | DATE | TITLE | | | | |
| | | 3 PLACES ± --- ± .005 | | GEP | 1987/11/06 | CRIMP TERMINAL, FEMALE .093/(2.36) DIA. 18-22 AWG | | | | |
| 2 PLACES ± 0.13 ± .010 | | CHECKED BY | DATE | MATERIAL NO. | | | | | | |
| 1 PLACE ± 0.25 ± --- | | RW | 1987/11/06 | DOCUMENT NO. | | | | | | |
| ANGULAR ±1/2° | | APPROVED BY | DATE | MATERIAL NO. | | DOCUMENT NO. | | SHEET NO. | | |
| | | RAS | 1987/11/06 | SEE CHART | | SD-1381-* | | 1 OF 1 | | |
| DRAFT WHERE APPLICABLE MUST REMAIN WITHIN DIMENSIONS | | MATERIAL NO. | | SIZE | | THIS DRAWING CONTAINS INFORMATION THAT IS PROPRIETARY TO MOLEX INCORPORATED AND SHOULD NOT BE USED WITHOUT WRITTEN PERMISSION | | | | |
| BW | | C | | | | | | | | |