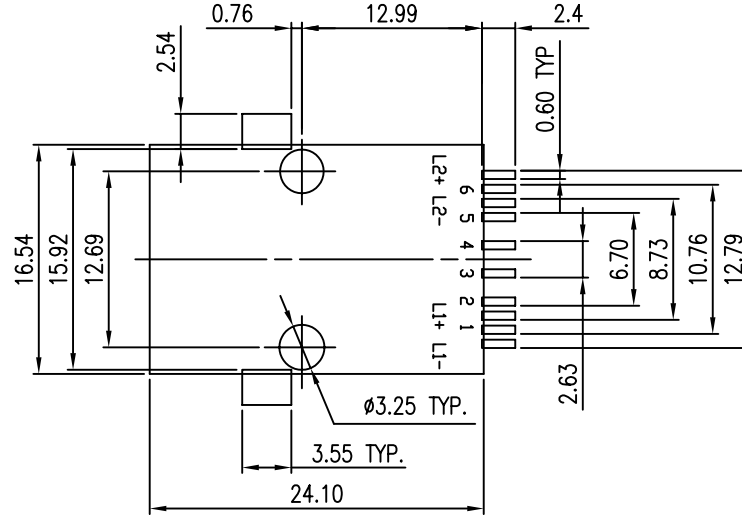
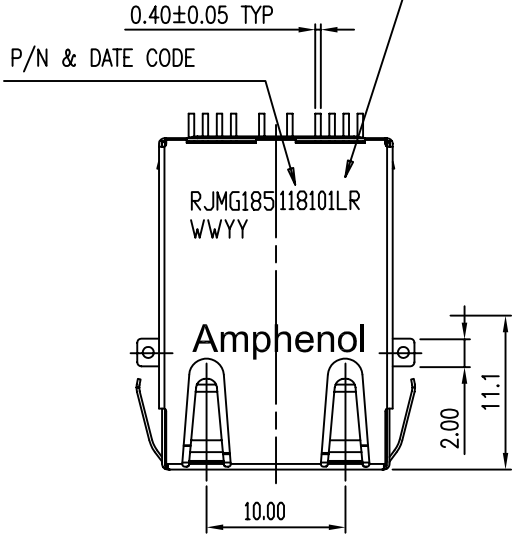


This document is the property of Amphenol Corporation and is delivered on the express condition that it is not to be disclosed, reproduced or used, in whole or in part, for manufacture or sale by anyone other than Amphenol Corporation without its prior consent, and that no right is granted to disclose or to use any information in this document.

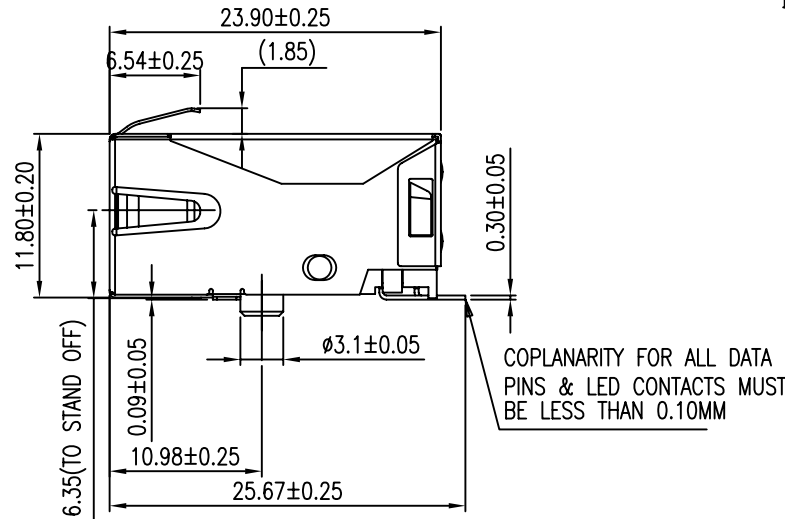
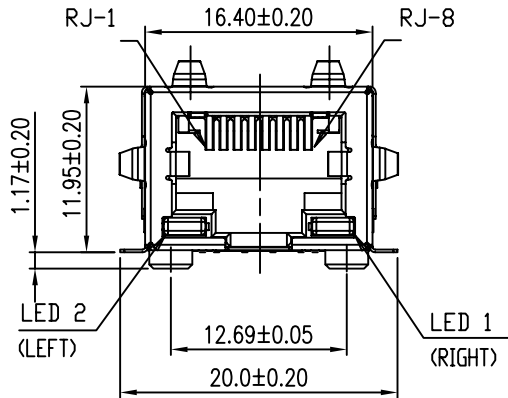
CUSTOMER DRAWING

REVISIONS				
SYM	ECN No.	DESCRIPTION	DATE	APPROVED
A		RELEASE TO PRODUCTION	11/07/05	Joseph Hsu
B		CHANGE SHIELD	06/27/07	Greg L

NO TAPE, LABEL OR STAMPED MARKS ALLOWED IN THIS AREA.



RECOMMENDED PCB LAYOUT
(ALL TOLERANCES ARE ±0.05)



CUSTOMER PART NUMBER CONFIGURATION

RJMG 18 5 X X - X X - 0 1 - L R

PROFILE OPTIONS

5: SMT SHIELD WITH TOP AND SIDE TABS

LED 1 DESIGNATION

1: GREEN

LED 2 DESIGNATION

1: GREEN

TERMINATION OPTIONS

8: 4x75 PPM REVERSE 100pf (2KV)

COMPLINAT CODE

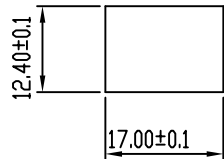
ROHS COMPLINAT

CONTACT PLATING THICKNESS
SHIELD & PACKING CODE

30U" COLD, COPPER ALLOY SHIELD
NO PLATING, TAPE REEL PACKING

TIA WIRING
0: STANDARD

URNS RATIO (TRANSMIT)
1: 1:1



RECOMMENDED PANEL CUTOUT
DO NOT SCALE THE DRAWING

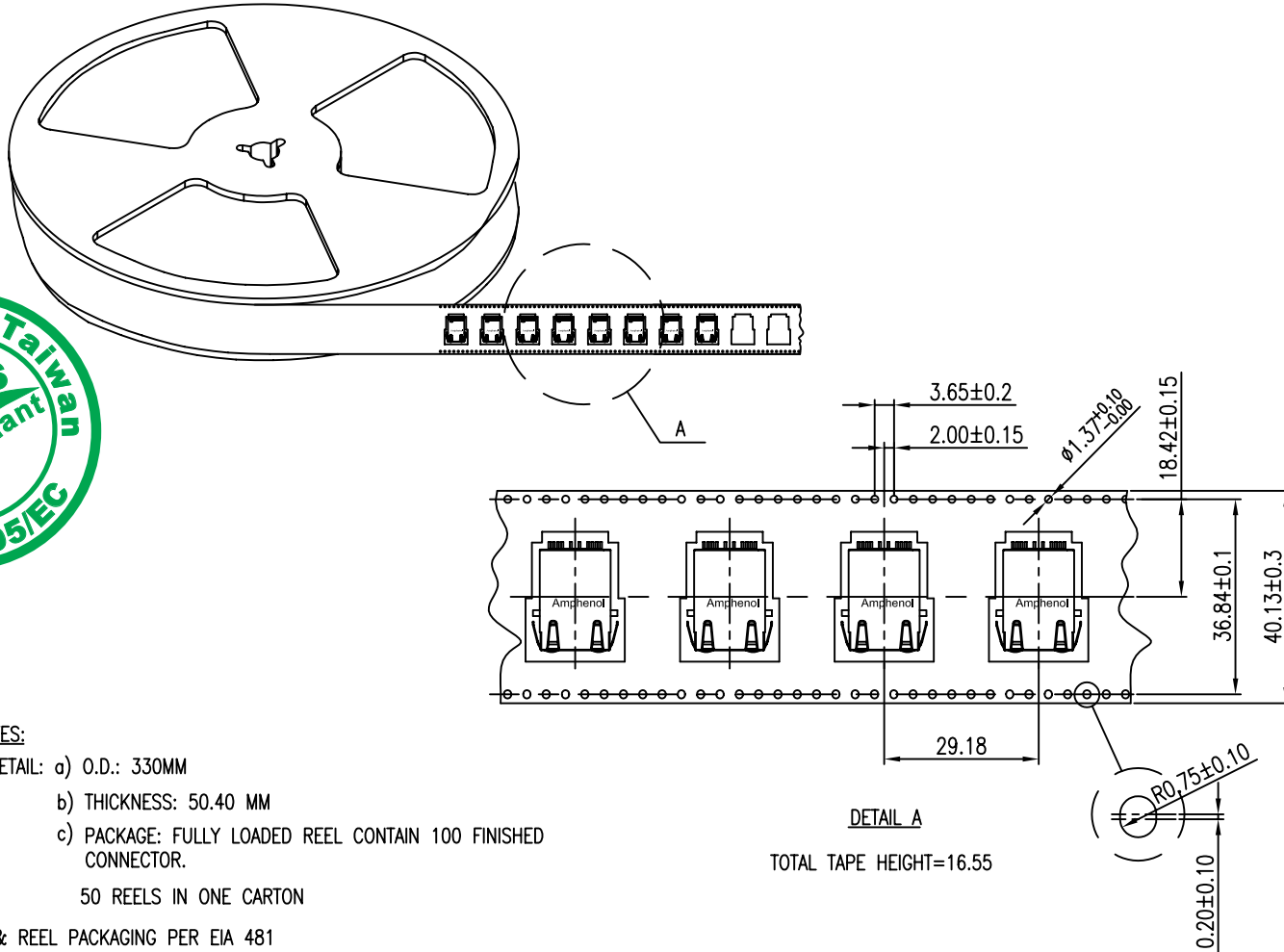
TOLERANCE m/m	APPROVALS	DATE	TITLE	Amphenol® Amphenol Corporation	
x. ±0.30	DRAWN Tony Lee	06/27/07	SINGLE PORT RJmag CONNECTOR R&C TERMINATION 10/100 LOW PROFILE SMT	SCALE	N.A.
x.x ±0.25				CHECKED Stone Lee	06/27/07
x.xx ±0.15	APPROVED Greg L	06/27/07		DRAWING NO.	T345-RJMG185118101LR
x.xxx ±0.08	UNLESS OTHERWISE SPECIFIED		SIZE	A4	
ANGULAR ±2°	UNIT		MM		

This document is the property of Amphenol Corporation and is delivered on the express condition that it is not to be disclosed, reproduced or used, in whole or in part, for manufacture or sale by anyone other than Amphenol Corporation without its prior consent, and that no right is granted to disclose or to use any information in this document.

CUSTOMER DRAWING

REVISIONS				
SYM	ECN No.	DESCRIPTION	DATE	APPROVED
A		RELEASE TO PRODUCTION	11/07/05	Joseph Hsu
B		CHANGE SHIELD	06/27/07	Greg L

TAPE AND REEL PACKING SPEC.



PACKAGING NOTES:

- REEL DETAIL:
 - O.D.: 330MM
 - THICKNESS: 50.40 MM
 - PACKAGE: FULLY LOADED REEL CONTAIN 100 FINISHED CONNECTOR.
50 REELS IN ONE CARTON
- TAPE & REEL PACKAGING PER EIA 481

TOLERANCE m/m	APPROVALS	DATE	TITLE	Amphenol® Amphenol Corporation	
x. ±0.30	DRAWN Tony Lee	06/27/07	SINGLE PORT RJmag CONNECTOR R&C TERMINATION 10/100 LOW PROFILE SMT	SCALE	N.A.
x.x ±0.25	CHECKED Stone Lee	06/27/07		SHEET	2 OF 3
x.xx ±0.15	APPROVED Greg L	06/27/07		DRAWING NO.	T345-RJMG185118101LR
x.xxx ±0.08				REV.	B
ANGULAR ±2°			SIZE	A4	
UNLESS OTHERWISE SPECIFIED	UNIT MM		PART NO.	RJMG185118101LR	

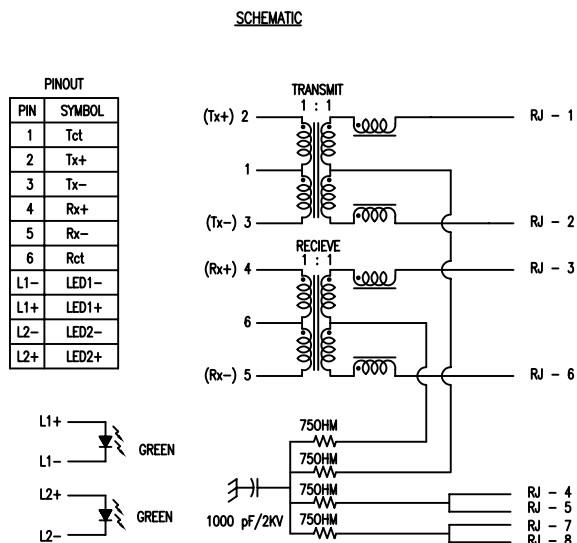
This document is the property of Amphenol Corporation and is delivered on the express condition that it is not to be disclosed, reproduced or used, in whole or in part, for manufacture or sale by anyone other than Amphenol Corporation without its prior consent, and that no right is granted to disclose or to use any information in this document.

CUSTOMER DRAWING

REVISIONS				
SYM	ECN No.	DESCRIPTION	DATE	APPROVED
A		RELEASE TO PRODUCTION	11/07/05	Joseph Hsu
B		CHANGE SHIELD	06/27/07	Greg L

ELECTRICAL SPECIFICATION(@25° C)

PARAMETER	TYPE	LIMITS (MAX. OR MIN.)	FREQUENCY RANGE/TEST CONDITIONS
INSERTION LOSS (RX/TX)	-0.8dB TYP.	-1.0dB MAX.	1-100 MHz
RETURN LOSS (RX/TX)	-22dB TYP. -18dB TYP. -12dB TYP.	-18dB MIN. -18+20log(f/30)dB MIN. -12dB MIN.	1-30 MHz 30-60 MHz 60-80 MHz
DC RESISTANCE	0.5 ohm MIN.	1.0 ohm MAX full 0.5 ohm MAX half	DC
CM-CM REJECTION	-40dB TYP.	-30dB MIN.	0-100MHz
CM-DM REJECTION	-40dB TYP.	-35dB MIN.	0-100MHz
CROSSTALK (PAIR TO PAIR)	-38dB TYP.	-35dB MIN.	0-100MHz
HIPOT (ISOLATION)	2.25KV/1.5KVrms.	2.25KV/1.5KVrms.	60S DC/AC
OCL	500uH TYP.	350uH MIN.	100KHz 0.1V 8mV DC BIAS



MATERIALS:

PLASTIC HOUSING: HIGH TEMP. THERMOPLASTIC POLYESTER, UL94V-0, COLOR-BLACK
 CONTACTS (RJ45): PHOSPHOR BRONZE
 NICKEL UNDER PLATING OVERALL
 30 u" GOLD ON MATING SURFACES.
 100 MICROINCHES TIN PLATED ON CONTACT TAILS

SHIELD: NO PLATING

RECOMMENDED REFLOW TEMPERATURE: PEAK VALUE NO MORE THAN 265°C AT 15 SECOND.

TOLERANCE m/m	APPROVALS	DATE	TITLE		Amphenol® Amphenol Corporation	
x. ±0.30	DRAWN Tony Lee	06/27/07	SINGLE PORT RJ45 CONNECTOR SHIELD, WITH R&C TERMINATION 10/100 LOW PROFILE SMT		SCALE N.A. SHEET 3 OF 3	
x.x ±0.25	CHECKED Stone Lee	06/27/07				
x.xx ±0.15	APPROVED Greg L	06/27/07				
x.xxx ±0.08			SIZE A4	PART NO. RJMG185118101LR	DRAWING NO. T345-RJMG185118101LR	REV. B
ANGULAR ±1°			UNIT MM			
UNLESS OTHERWISE SPECIFIED						