

MATERIAL:  
HOUSING MATERIAL: LCP  
COLOR: IVORY  
ACTUATOR MATERIAL: LCP  
COLOR: BLACK  
CONTACT MATERIAL: PHOSPOR BRONZE  
CONTACT PLATING: 100µ TIN OVER 50µ NI  
QUALITY CLASS: 25 MATING CYCLES

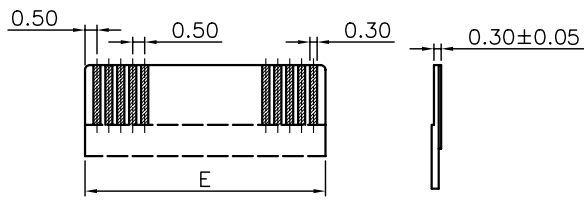
ENVIRONNEMENTAL:  
OPERATING TEMPERATURE: -25°C UP TO 85°C  
FLAMABILITY RATING: UL94-V0  
COMPLIANCE: LEAD FREE AND ROHS

ELECTRICAL:  
CURRENT RATING: 0.4A  
WORKING VOLTAGE: 50V  
INSULATION RESISTANCE: >100MOHM  
DIELECTRIC WITHSTANDING VOLT.: 250VAC/MN  
CONTACT RESISTANCE: 20mOHM MAX

SOLDERING:  
REFLOW PROCESS ONLY

DIMENSION:  
B = 0.50 x NB PINS + 6.50  
C = 0.50 x (NB PINS - 1)  
D = 0.50 x (NB PINS + 1) + 0.10  
E = 0.50 x (NB PINS + 1)

RECOMMENDED PCB LAYOUT - COMPONENT VIEW



FFC LAYOUT

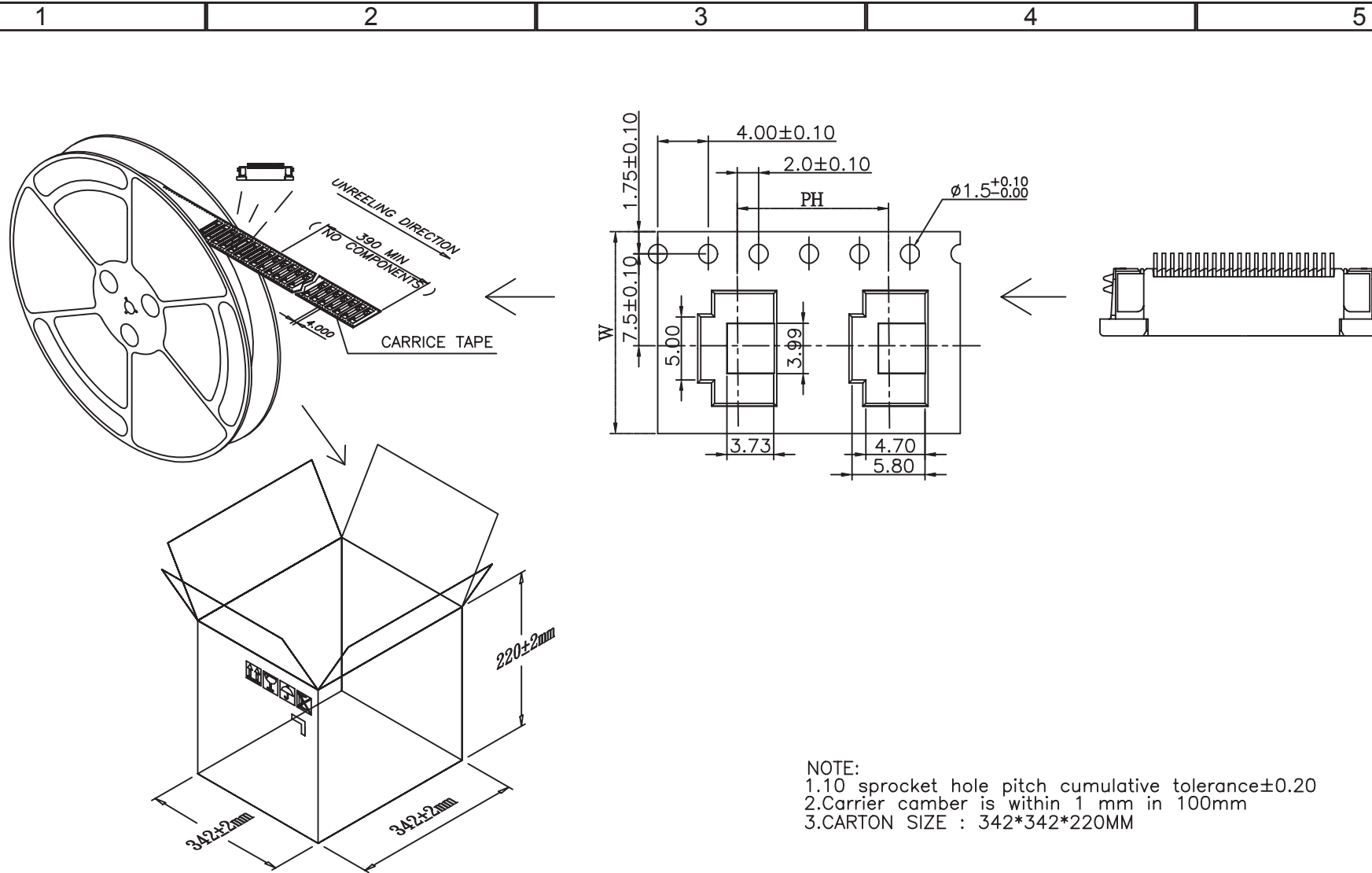
RoHS Compliant			
G			
F			
E			
D	30-JUL-08	INSERTION DEPTH	CH
C	26-NOV-07	MODIFICATIONS	EC
B	14-MAR-07	CHARACTERISTIC	EC
A	02-OCT-06	PDF	JP
REV	DATE	FILE	BY

PROJECTION:	
APPROVAL: RJ	

GENERAL TOLERANCE
.X = +/- 0.2
.XX = +/- 0.15
UNIT: MM
SCALE:
SHEET: 1/3
DRAW: PEARL

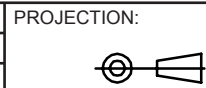
DESCRIPTION: 0.5MM ZIF FPC HORIZONTAL TOP CONTACT TYPE - TAPE & REEL PACKAGING  
WERI PART NO: 6871 xx 14022

SIZE  
**A4**



NOTE:  
 1.10 sprocket hole pitch cumulative tolerance±0.20  
 2.Carrier camber is within 1 mm in 100mm  
 3.CARTON SIZE : 342\*342\*220MM

RoHS Compliant			
G			
F			
E			
D	30-JUL-08	INSERTION DEPTH	CH
C	26-NOV-07	MODIFICATIONS	EC
B	14-MAR-07	CHARACTERISTIC	EC
A	02-OCT-06	PDF	JP
REV	DATE	FILE	BY



GENERAL TOLERANCE  
 .X = +/- 0.2  
 .XX = +/- 0.15



APPROVAL: RJ

UNIT: MM

DESCRIPTION: 0.5MM ZIF FPC HORIZONTAL TOP CONTACT TYPE - TAPE & REEL PACKAGING

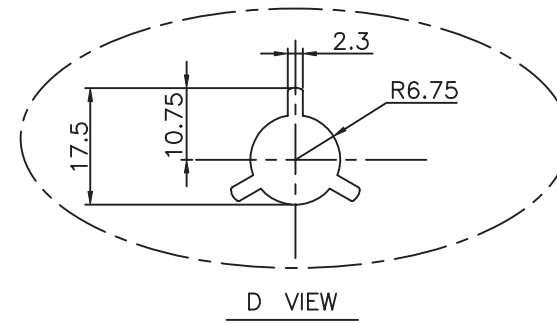
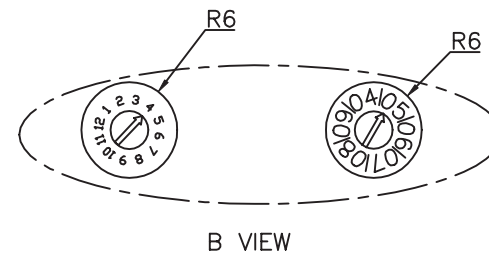
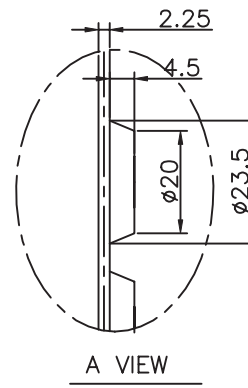
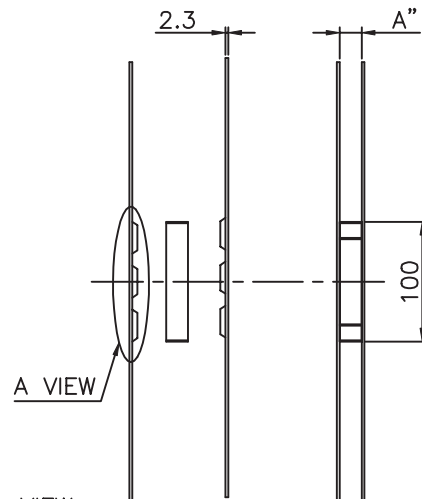
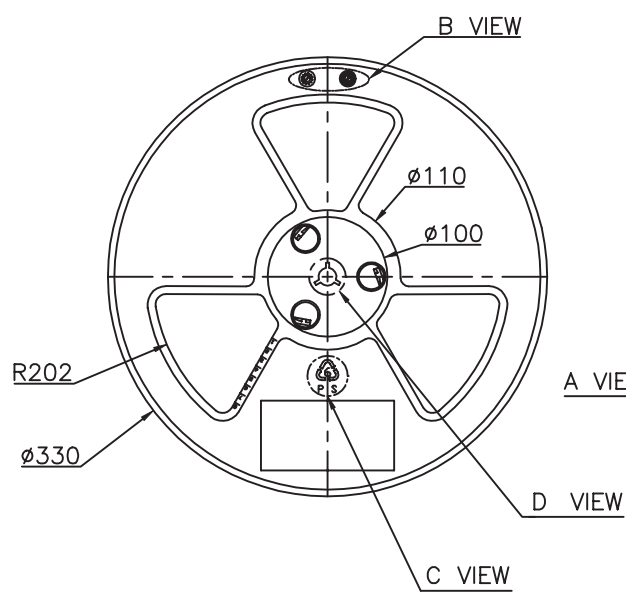
SIZE

SCALE:

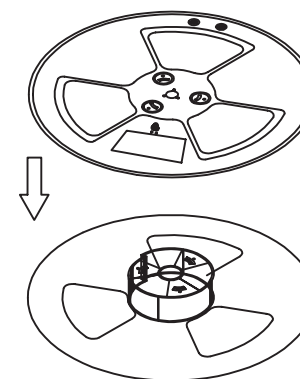
WERI PART NO: 6871 xx 14022

**A4**

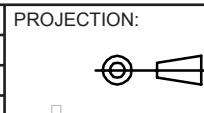
DRAW: PEARL



NO.	REEL A	CARRIER WIDTH	COVER WIDTH	D I M A''±0.2
01	44.5mm	44mm	49.5mm	44.5mm
02	24.5mm	24mm	25.5mm	24.5mm
03	32.5mm	32mm	37.5mm	32.5mm
04	16.5mm	16mm	13.3mm	16.5mm
05	12.5mm	12mm	9.3mm	12.5mm



RoHS Compliant			
G			
F			
E			
D	30-JUL-08	INSERTION DEPTH	CH
C	26-NOV-07	MODIFICATIONS	EC
B	14-MAR-07	CHARACTERISTIC	EC
A	02-OCT-06	PDF	JP
REV	DATE	FILE	BY



APPROVAL: RJ

GENERAL TOLERANCE  
.X = +/- 0.2  
.XX = +/- 0.15



DESCRIPTION: 0.5MM ZIF FPC HORIZONTAL TOP CONTACT TYPE - TAPE & REEL PACKAGING

WERI PART NO: 6871 xx 14022

SIZE  
**A4**