

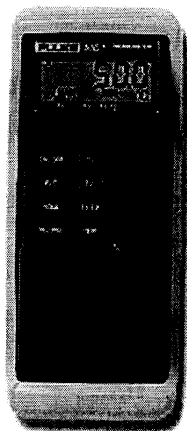
Home	HVAC/Temperature	go
Contact Us		
Where to Buy	Find Products:	go
Site Search	Choose a Solution or Product category, then press Go	



- HVAC/Temperature**
- Basic Electrical Testers
- Clamp Meters
- Digital Multimeters
- Fluke 16 Multimeter
- Gas Measurement
- Power Quality Tools
- Process Cal Tools
- Thermometers**
- Application Notes
- Downloads
- Trade Shows

Fluke 50S and 50D Thermometers

[Product Home](#) | [Specifications](#) | [Models, Options & Accessories](#) | [Manuals](#)



Value-priced thermometers featuring great reliability

The Fluke 50S (single input) and 50D (dual input) contact thermometers offer simple functionality at a great price. These thermometers work with either K- or J-type thermocouples and offer 0.1 °C (0.2 °F) resolution over the entire measurement range. Both models are protected by a rugged yellow holster.

Not available in Europe until Jan. 1, 2000.

Fluke 50S

A basic single input thermometer that you can rely on. To maximize accuracy, calibration pots on the face of the meter allows the user to easily compensate for thermocouple errors. Other features include a selectable readout in °C or °F, and HOLD mode to freeze the reading on the display.

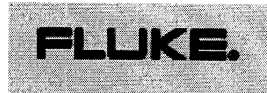
Fluke 50D

The dual-channel 50D has all the capabilities of the 50S, plus additional measurement functions and valuable features. With the capability to display (T1-T2) temperature differentials, the 50D is ideal for measuring input/output temperature changes. Features include SCAN Mode, a valuable function that continuously scrolls the display screen through the values for T1, T2, and (T1-T2); and MIN/MAX RECORD, which captures the minimum and maximum temperatures from any one of the three output values.

Benefits at a glance:

- Value-priced offering with choice of single input or dual input models
- Rugged holster protects thermometer
- OFFSET function minimizes thermocouple errors
- K- or J-type thermocouple compatibility
- °C or °F readout
- User selectable 0.1 °C (0.2 °F)
- HOLD Mode freezes display for convenient viewing
- (T1-T2) true differential display mode (50D Only)
- SCAN Mode cycles display through T1, T2, (T1-T2) (50D Only)
- MIN/MAX Recording (50D only)
- One-year warranty

[Home](#) |
[Contact Us](#) |
[Where to Buy](#) |
[Site Search](#) | **Choose a Solution or Product category, then press Go**



- HVAC/Temperature**
- Basic Electrical Testers
- Clamp Meters
- Digital Multimeters
- Fluke 16 Multimeter
- Gas Measurement
- Power Quality Tools
- Process Cal Tools
- Thermometers**
- Application Notes
- Downloads
- Trade Shows

Fluke 50S and 50D Thermometers Specifications

[Product Home](#) | [Specifications](#) | [Models, Options & Accessories](#) | [Manuals](#)

- [Measurement](#)
- [General](#)

Measurement	
Temperature accuracy:	K-type [0.1% + 0.7 °C (1.3 °F)] J-type [0.1% + 0.8 °C (1.4 °F)]
Temperature range:	K-type -200 °C to 1370 °C (-328 °F to 2498 °F) J-type -200 °C to 760 °C (-328 °F to 1400 °F)
Display resolution:	0.1 °C (0.2 °F) over full range

General	
Unit weight:	280 g (10 oz)
Dimensions: (without holster)	16.6 cm L x 7.5 cm W x 2.8 cm D (6.6 in L x 3.0 in W x 1.1 in D)
Battery	9V battery
Battery life	800 hours typical
Certification	CE, CSA
Warranty/calibration interval	1 year