



CUSTOMER: S068

PART NUMBER:



APPROVAL SHEET

OF

SWITCHING ADAPTER

MODEL NO.

DSA-0151A-12 K

ORDER NO: YS3-00603

承認書确认后請簽回一份

CUSTOMER APPROVED SIGNATURE

--	--	--	--

DEE VAN ENTERPRISE CO., LTD (Head-Quarter)

NO. 5, PAO-KAO RD, HSIN-TIEN, TAIPEI COUNTY, TAIWAN, R.O.C

TEL: +886-2-2917-7002 (12 LINES), FAX: +886-2-2915-4370, +886-2-2918-7244

DEE VAN ELECTRONICS (SHEN ZHEN) CO., LTD (Factory)

5 th Industrial District, Gong Ming Town, Baoan County, Shen Zhen, Guang Dong, CHINA

TEL: +86-755-2773-6530 ~ 7, FAX: +86-755-2773-6538 ~ 9

X

1. SPECIFICATION

-- 1 / 4

0. REVISION CHANGE DESCRIPTION

Revision	Description	Date
A	Initial release	2006,06,15

1. GENERAL DESCRIPTION

This specification defines the input, output, performance characteristics, environment, noise and safety requirements for a 15 watts switching type power adapter.

The adapter input/output are single range AC input and +12 V DC with 15 watts maximum output.

2. INPUT REQUIREMENT

2-1C INPUT VOLTAGE

MINIMUM	NOMINAL	MAXIMUM
180 VAC	200 – 240 VAC	264 VAC

2-2 AC INPUT FREQUENCY

MINIMUM	NOMINAL	MAXIMUM
47 Hz	50 / 60 Hz	63 Hz

2-3 AC INPUT CURRENT

230 VAC INPUT	0.4 A maximum
---------------	---------------

2-4 AC INRUSH CURRENT

AT FULL LOAD, 25 DEGREE C, COLD START

230 VAC, 50Hz INPUT	No damage shall occur and the input fuse shall not blow up.
---------------------	---

2-5 PRIMARY CURRENT PROTECTION

An adequate internal fuse on the AC input line is provided.

2-6 CONFIGURATION

3 Conductors, <Live, Neutral>

2-7 POWER CONSUMPTION ON POWER SAVING MODE

LOAD	INPUT CONDITION	INPUT POWER REQUIREMENT
0 A	230 VAC 50 Hz	3.0 W maximum

1. SPECIFICATION

-- 2 / 4

3. OUTPUT REQUIREMENT

3-1	NOMINAL DC OUTPUT VOLTAGE	+12 V
3-2	MINIMUM LOAD CURRENT	0 A
3-3	NOMINAL LOAD CURRENT	1.25 A
3-4	NOMINAL OUTPUT POWER	15W
3-5	TOTAL OUTPUT REGULATION	+/- 5%
3-6	LINE REGULATION	+/- 2%
		At nominal input voltage and full load
3-7	RIPPLE AND NOISE	120 mVp-p
		At 20 MHz, and output parallel with 0.1uF & 10uF capacitors to ground Temperature at 25 °C, and NOMINAL AC input voltage
3-8	EFFICIENCY	65% minimum
		At nominal input voltage and full load
3-9	DROP-OUT	With half cycle input voltage drop-out, the unit shall operate within the prescribed voltages with a drop-out pulse repetition rate of 500mS. Conditions: Full load and nominal input AC voltage Limits: Meet the regulation requirement
3-10	PROTECTION	
	OVER-CURRENT PROTECTION	2.5A maximum with auto-recovery function
	OVER-VOLTAGE PROTECTION	19.5VDC maximum
	SHORT-CIRCUIT PROTECTION	The adapter shall not be damaged by short the DC output to Ground.
	OPEN CIRCUIT PROTECTION	When primary power is applied with no load on any output level, no damage or hazardous conditions should occur.
3-11	REMARK	Unless otherwise specification output load must set at CR mode.

4. MECHANICAL REQUIREMENT

4-1 DIMENSION

82.0 (L) * 54.0 (W) *43.3 (H) mm

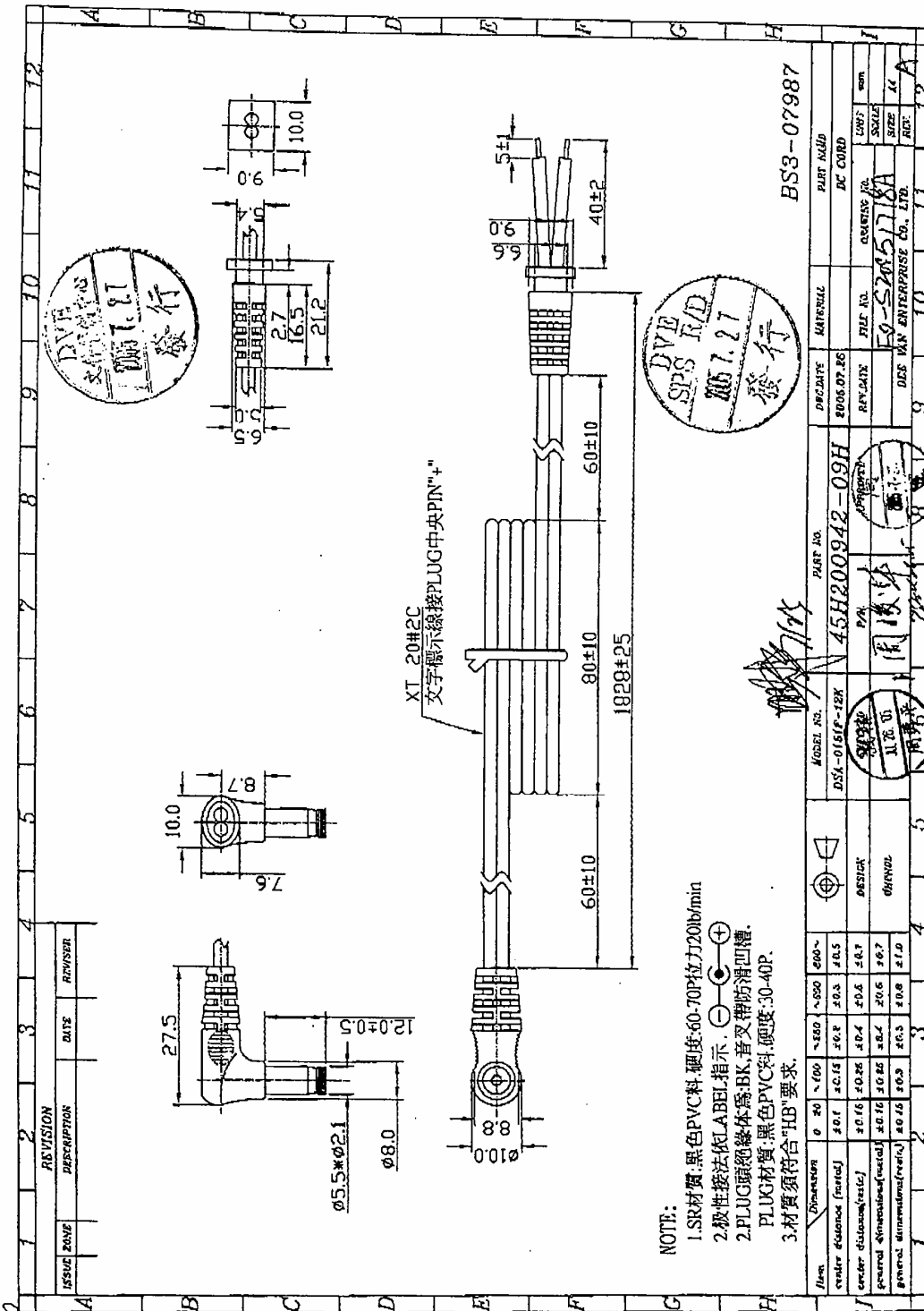
4-2 WEIGHT

250 g maximum



3. DC OUTPUT CORD DRAWING

-- 1 / 1



- NOTE:
1. SR材質: 黑色PVC料, 硬度: 60-70P(拉力20lb/min)
 2. 极性接法依 LABEL 指示, ⊖ ⊕
 2. PLUG 絕緣體為: BK, 音叉帶防滑凹槽.
PLUG 材質: 黑色PVC料, 硬度: 30-40P.
 3. 材質須符合 "HB" 要求.

REV. NO.	REV. DATE	REV. BY	REV. REASON
1			
2			
3			
4			
5			
6			
7			
8			
9			
10			
11			
12			

MODEL NO.	45H200942-09H
DESIGNER	周俊華
DATE	2006.07.26
REV. DATE	
REV. BY	
REV. REASON	
PART NO.	BS3-07987
MATERIAL	DC CORD
FILE NO.	EG-S2051718A
DESIGNER	周俊華
DATE	2006.07.26
REV. DATE	
REV. BY	
REV. REASON	

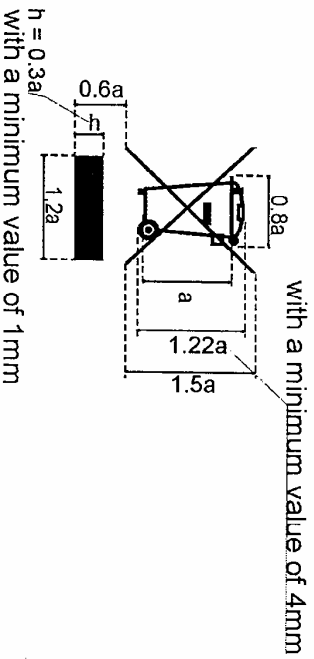
X

FROM NO.:1		COMPUTER NO.		
REV	ZONE	DESCRIPTION	DATE	BY

STONTRONICS LTD.
 Switching Adapter
 MODEL: DSA-0151A-12 K
 P/N: T3618ST
 INPUT: 200-240V~ 50/60Hz 0.4A
 OUTPUT: +12V $\bar{=}$ 1.25A

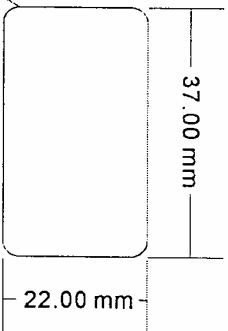
Made In China

2:1



4*R2.3

1:1



NOTE:

1. 顏色: 銀底黑字
2. 材質: 反銀龍加PVC(UL, CSA APPROVAL)
環保材料
3. 處理: 永久背膠
4. 須由UL, CSA合格廠商承制
5. 儲存溫度: -20C及+70C之範圍
6. 待業務務確認安規等各項再行制作生產
7. CE及回形logo不能低於5mm

BS3-07986

DEE VAN ENTERPRISE CO., LTD.		DEPARTMENT	SCALE	UNIT	TOLERANCE	PART NAME	PART NO.	REV
MODEL NO:	DSA-0151A-12 K	R&D SPS	2:1	mm	+0/-0.2	N/P	89P015112-F6H	A
	PAGE 1 OF 1	APPD.	CKD.	SAFETY	MATERIAL	DRAW BY	DATE	REV
						GMZ	2005/07/26	A