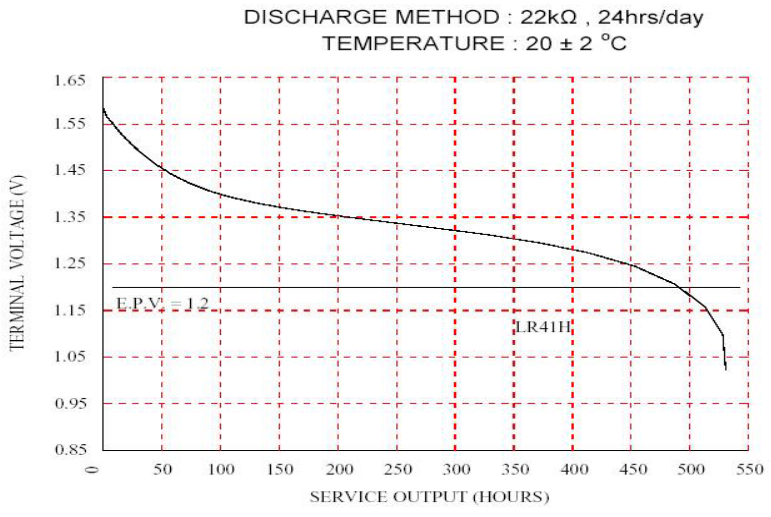
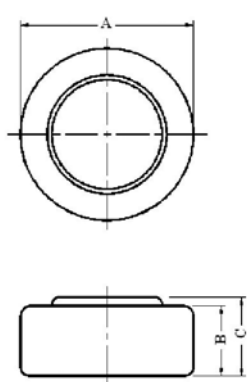


nominal voltage:	1,5V	conditions
off load voltage:	1,55...1,62V	new battery
capacity:		
nominal:	25mAh	continuous discharge at 20°C under 22kohms load, end-point voltage 1,2V
electrical characteristics: (new battery)	≥ 1,55V ≥ 1,54V	off load voltage on load voltage, under 22Kohms load, measuring time 0,3s
service output:	490h 440h	new battery (tested within 30 days after delivery) after 12 months storage at room temperature discharge load 22Kohms, daily discharge time 24h, end-point voltage 1,2V
shelf life:	12months 90%	after delivery, under proper storage conditions of the capacity will be maintained after 12 months storage
safety characteristics short circuit:	no explosion shall be	at 20°C, short circuit period 24h
chemical system:	Zinc-Manganese Dioxide (Potassium Hydroxide Electrolyte)	

discharge diagram:



Dimensions (in mm):



Dimensions	Specification
A	∅ 7.90 ^{+0.00} _{-0.35}
B	3.20 ^{+0.00} _{-0.25}
C	3.60 ^{+0.00} _{-0.30}

	specifications for model/type:	Alkaline Button Cell LR41
	Ansmann drawing number / part number:	5015332
	drawn by / date:	Gramlich / 26.05.2005