

Power entry module with PCB mounting possibility

FN 9226

- Up to 10A current ratings
- IEC 950-compliant
- Circuit board mounting possibility
- Good HF coupling to the equipment housing

- Nennstrom bis 10A
- IEC 950 konform
- Leiterplatten-Montage möglich
- Gute HF-Ankopplung an das Gerätegehäuse

- Courant nominal jusqu'à 10A
- Conforme à CEI 950
- Possibilité de montage sur carte
- Bon couplage HF au boîtier de l'appareil



Filter selection table

Choose the family FN xxx with the required body style and features, and add -?? to determine current rating, and /?? for output connections. Example: FN 9226-1/06 is a horizontal screw-mounting filter, rated for 1A, with fast-on outputs.

Approvals



Family	Current ratings A at 40°C (25°)				Output connection		Housing
	1 (1.2)	3 (3.6)	6 (7.3)	10 (10)	I	II	
FN 9226 -?? /??	-1	-3	-6	-10	/02	/06	■
Inductance L mH							
	4.65	1.24	0.52	0.27			

Additional specifications

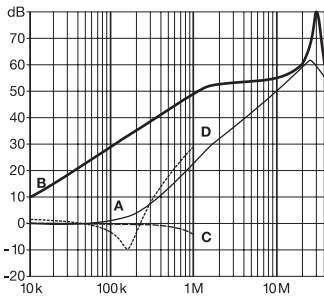
Filter type	Capacitance		Maximum leakage µA/phase	Res. R MΩ	Weight g	Maximum operating voltage		Operating frequency Hz	Hipot test voltage	
	Cx nF	Cy nF				VAC	Hz		PN→E VAC	P→N VAC
All standard types	47	2.2	190		40	250	50/60	DC to 400	2000	760
B types (medical) optional	47		2	2.2	40	250	50/60	DC to 400	2500	760

MTBF at 40°C, 230V, per Mil-HB-217F: 800,000 hours

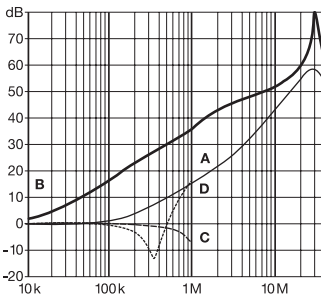
FN 9226 insertion loss

Per CISPR 17; A = 50Ω/50Ω sym, B = 50Ω/50Ω asym, C = 0.1Ω/100Ω sym, D = 100Ω/0.1Ω sym

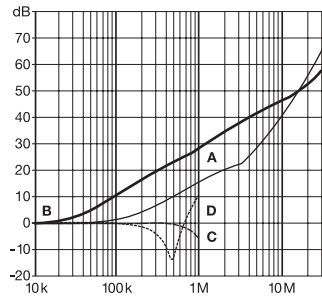
1 amp types



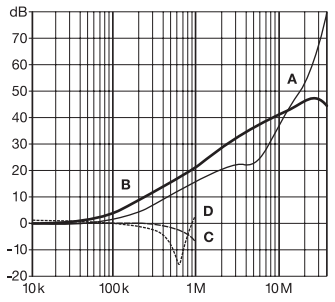
3 amp types



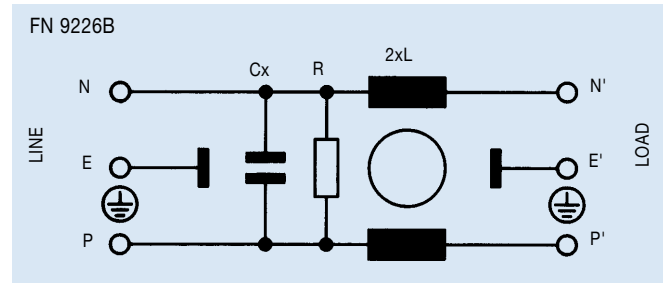
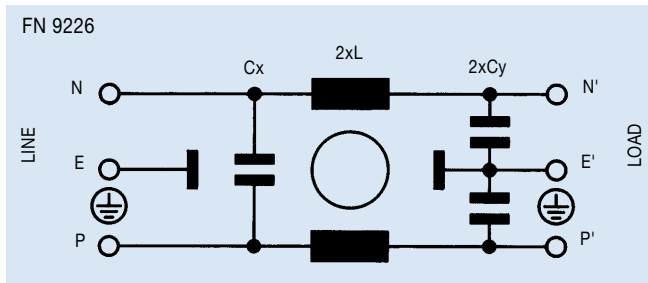
6 amp types



10 amp types



Electrical schematics

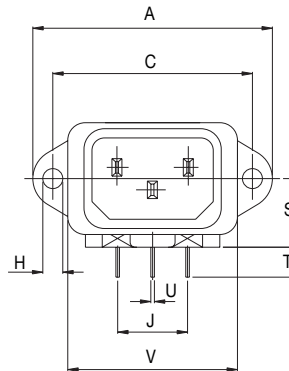


See tables for component values

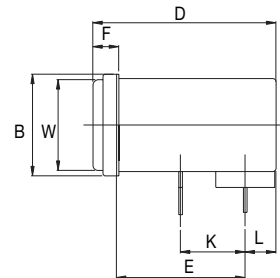
Mechanical data

		Tol. mm
A	48	± 0.5
B	22.4	± 0.3
C	40	± 0.2
D	40.35	± 0.3
E	28.35	± 0.3
F	5.7	± 0.3
H	∅4	-
J	13.2	± 0.5
K	14	± 0.5
L	6.8	± 0.3
M	R≤3.5	-
N	22.6	+0.2 0
P	34.4	+0.2 0
R	∅3.5	-
S	14	-
T	6	-
U	∕0.8	-
V	34	± 0.25
W	20	± 0.3

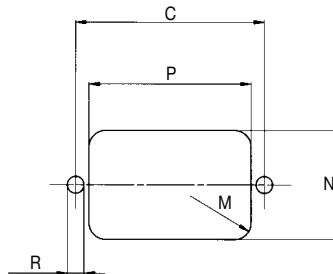
Front



Side



Panel cut-out



All dimensions in mm; 1 inch = 25.4mm