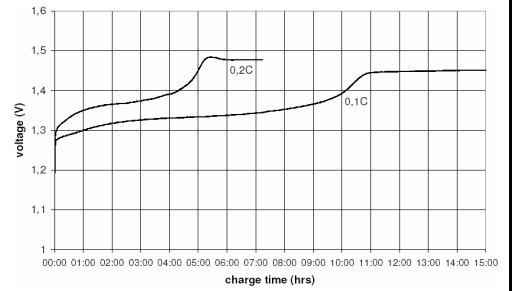


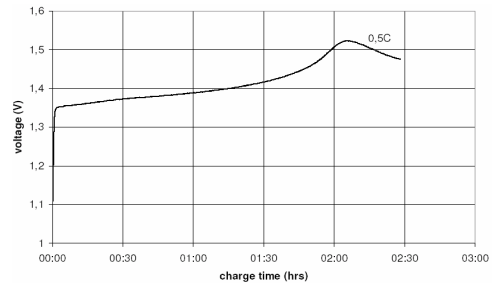
		Conditions	
<b>cell type:</b>		NiMH	
<b>cell size:</b>		AA	
<b>nominal voltage:</b>	1.2	V	
<b>max. charge voltage:</b>	1.5	V	at standard charge (0.1C / 20°C)
<b>capacity</b>			
nominal:	4500	mAh	discharge at 0.2C
minimum:	4000	mAh	discharge at 0.2C
	3600	mAh	discharge at 1C
			1.0V end discharge voltage
			ta: 20°C
<b>max. continuous discharge current:</b>	4000	mA	ta: 0...45°C
<b>charge</b>			
standard charge:	400	mA	14hrs
quick charge:	1150	mA	4hrs
fast charge:	2000	mA	2.2hrs
<b>recommended charge termination control parameters:</b>	0...5	mV	- delta V
	0.8...1	°C	temperature rise per minute
	45...50	°C	TCO (temperature cut off)
<b>trickle charge current:</b>	40...200	mA	(recommended)
<b>continuous overcharge:</b> (less than 1 year)	≤ 400	mA	no conspicuous deformation no leakage
<b>internal resistance:</b> (impedance)	≤ 20	mOhms at 1KHz	battery fully charged
<b>life expectancy:</b>	≥ 500	cycles	accord. IEC standard
<b>self discharge</b>			
charge retention:	≥ 85	%	after 6 months storage
(at ≤ 20°C ambient)	≥ 80	%	after 12 months storage
<b>ambient temperature range:</b>	0...45	°C	standard charge
	10...40	°C	fast charge
	- 20...60	°C	discharge
	- 20...35	°C	storage

### Diagrams

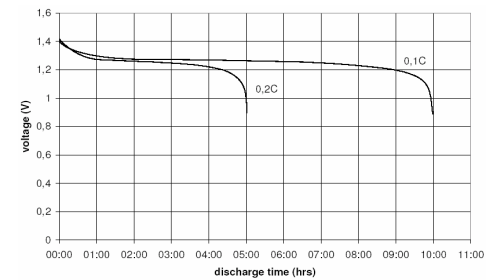
standard charge



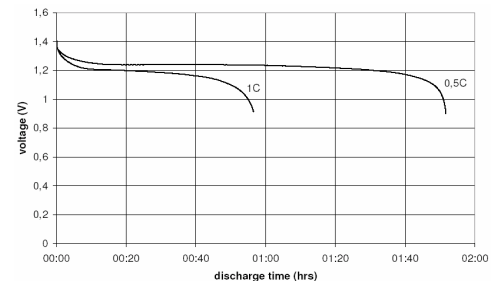
fast charge



low rate discharge



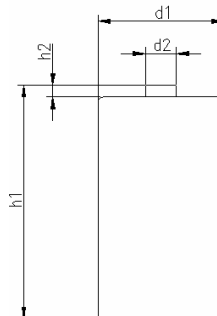
high rate discharge



QCT1: 20/3800/25  
QCT2: 30/3600/30

### mechanical specifications

cell dimensions (incl. label)			
diameter d1:		25.8	- 1.0 mm
diameter d2:	max.	7.5	mm
height h1:		50.0	- 2.0 mm
height h2:	min.	1.5	mm
weight:		80	± 4 g



	<b>ANSMANN Specifications for model:</b>	<b>C - 4500mAh NiMH MaxE Low Self Discharge Type</b>
	data sheet no. / part no.	5035351
	version no.	0
	author / date	Gramlich / 19.09.2008