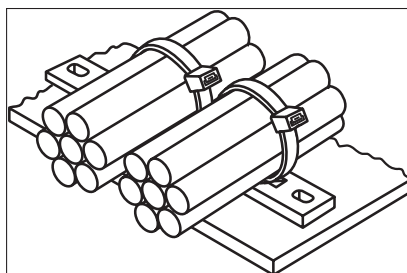


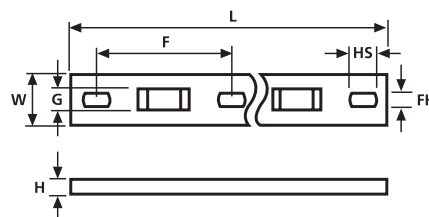
Mounting Plates Types MP and MSMP

Features and Benefits

Allowing multiple cables to be run in parallel these mounting plates are simply fixed by two screws. The cables are attached to the mounting plate by using a cable tie through any combination of the available slots.



Mounting Plates Types MP and MSMP



Mounting Plates Types MP and MSMP

Application

Many applications require each cable run to be firmly held in place but separately from adjacent cable runs (example - control cabinets, machinery and military systems). The MP series of mounts help achieve this.

Material Data	
Material	Polyamide 6.6 (PA66)
Colour	Natural (NA)
Operating Temperature	-40 °C to +85 °C Continuous, (+105 °C for 500 h)
Flammability	UL94 V2



Technical Table

Article-No.	Type	Length (L)	Width (W)	Height (H)	Fixing Hole Ø (FH)	Fixing Hole Centres (F)	Hole Size (HS)	Strap Width max. (G)	Material	No. of bundles
151-24219	MP2M3	76.2	12.7	3.2	3.5	31.8	6.4	5.2	PA66	2
151-24319	MP3M3	108.0	12.7	3.2	3.7	31.8	6.4	5.2	PA66	3
151-24419	MP4M3	139.8	12.7	3.2	3.7	31.8	6.4	5.2	PA66	4
150-83499	MSMP4	167.0	15.9	5.2	5.1	19.05	7.6	8.2	PA66	4
151-24519	MP5M3	171.6	12.7	3.2	3.7	31.8	6.4	5.2	PA66	5
151-25519	MSMP5	204.0	15.7	5.3	5.1	38	7.7	8.2	PA66	5
151-25619	MSMP6	242.0	15.7	5.3	5.1	38	7.7	8.2	PA66	6

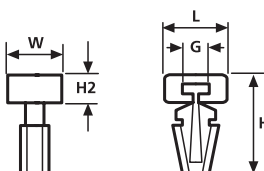
All Dimensions in mm. Subject to technical changes.

For Specifications please see table page 416 in Appendix.

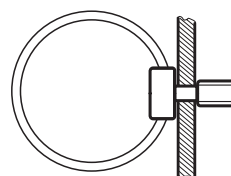
Cable Fixing Accessory TM1SF

Features and Benefits

The TM1SF mount is ideal for applications with restricted access, or where space-saving is required. The arrowhead simply pushes into a pre-drilled or pre-punched hole giving a very secure fixing.



TM1SF Fixing Base



TM1SF Fixing Base

Technical Table

Article-No.	Type	Length (L)	Width (W)	Height (H)	Height (H2)	Fixing Hole Ø (FH)	Panel Thickness max.	Strap Width max. (G)	Material	Colour
151-40119	TM1SF	10.2	7.6	15.6	4.6	6.3	3.4	5.2	PA66	Natural (NA)

All Dimensions in mm. Subject to technical changes.



Please Note for Product Specific Approvals please refer to Chapter 7.3

Type	Length	Width	Standards						
			UL	GL	BV	DNV	VG 95387 T04	SAE AS23190 MIL MS3367	DEF STAN
MAT8SS7	230	7.0		● ⁶	● ²				
MAT12SS7	330	7.0		● ⁶	● ²				
MAT16SS7	430	7.0		● ⁶	● ²				
MAT24SS7	630	7.0		● ⁶	● ²				
MAT8SS12	230	12.0		● ⁶	● ²				
MAT12SS12	330	12.0		● ⁶	● ²				
MAT16SS12	430	12.0		● ⁶	● ²				
MAT24SS12	630	12.0		● ⁶	● ²				
MBT5S	127	4.6		● ⁷	● ⁷	● ⁷			
MBT8S	201	4.6		● ⁷	● ⁷	● ⁷			
MBT14S	362	4.6		● ⁷	● ⁷	● ⁷			
MBT20S	521	4.6		● ⁷	● ⁷	● ⁷			
MBT27S	681	4.6		● ⁷	● ⁷	● ⁷			
MBT33S	838	4.6		● ⁷	● ⁷	● ⁷			
MBT8H	201	7.9		● ⁷	● ⁷	● ⁷			
MBT14H	362	7.9		● ⁷	● ⁷	● ⁷			
MBT20H	521	7.9		● ⁷	● ⁷	● ⁷			
MBT27H	681	7.9		● ⁷	● ⁷	● ⁷			
MBT33H	838	7.9		● ⁷	● ⁷	● ⁷			
MBT14XH	362	12.3		● ⁷	● ⁷				
MBT20XH	521	12.3		● ⁷	● ⁷				
MBT27XH	681	12.3		● ⁷	● ⁷				
MBT33XH	838	12.3		● ⁷	● ⁷				
Protective Channel LFPC70	–	7.0							61-12/31
Protective Channel LFPC103	–	10.3							61-12/31
Protective Channel LFPC150	–	15.0							61-12/31

¹ Polyamide 6.6 (PA66) natural, Polyamide 6.6 Heat stabilised (HS) natural

² Polyamide 6.6 (PA66) natural, Polyamide 6.6 UV Resistant (W) black

³ Polyamide 6.6 (PA66) natural, Polyamide 6.6 Heat stabilised (HS) natural, Polyamide 6.6 UV Resistant (W) black

⁴ Polyamide 6.6 (PA66) natural, Polyamide 6.6 Heat stabilised (HS) natural, black

⁵ Polyamide 6.6 (PA66) natural

⁶ Stainless Steel Type 316 uncoated, Stainless Steel Type 316 coated

⁷ Stainless Steel Type 316 uncoated

Subject to changes

Standards for HellermannTyton Fixing Bases

UL Underwriters Laboratories (Yellow Card) (USA)

Type	Length	Width	Standards
			UL
Self Adhesive Mounting Bases MB3A	19.0	19.0	●
Self Adhesive Mounting Bases MB4A	28.0	28.0	●
Self Adhesive Mounting Bases MB5A	38.0	38.0	●
Mounting Base CTAM 1	20.5	10.2	●
Mounting Base CTAM 2	20.5	10.2	●
Mounting Base CTAM 2	34.0	12.7	●
Mounting Base CTAM 2	54.1	12.7	●
Mounting Base CTAP 1	204	15.7	●
Mounting Base CTAP 2	242	15.7	●
Mounting Base CTAP 2	10.2	7.6	●
Mounting Plate MSMP 5	204.0	15.7	●
Mounting Plate MSMP 6	242.0	15.7	●
Mounting Cradle TM-1/SF	16.0	10.0	●