

973-233/245

AMP

**Standard Profile Headers—Shrouded  
with .066 End Dimension  
Double Row, .100 x .100 Centers**

For drawings, technical data or samples, contact your AMP sales engineer or call the AMP Product Information Center 1-800-522-6752. Dimensions are shown for reference purposes only.

**.025 Square  
Right-Angle Post  
(with Detent Windows)**

**Material:**

Housing—Black thermoplastic, flame retardant

Contacts—Copper alloy

**Related Product Data:**

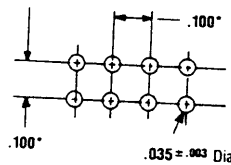
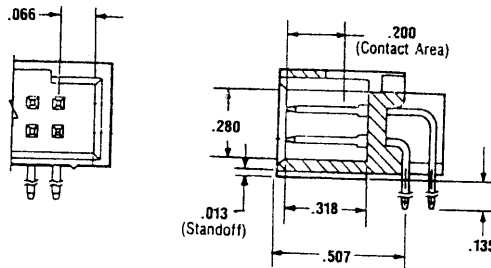
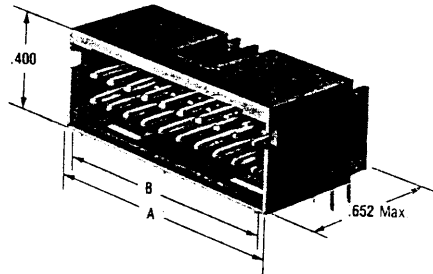
**Mateable Connectors:**  
**AMPMODU Board Mount Receptacles**—pages 12, 13, 16, 17 & 19  
**AMPMODU Wire-Applied Receptacles**—pages 28, 30 & 31  
**Wire-Applied Locking Clip Connectors**—pages 44 & 45  
**AMPMODU MT Connectors**—Catalog 83-711  
**Technical Documents**—page 100

**Plating Specifications:**

**Duplex C**—.000030 gold on contact area, .000100-.000200 tin-lead on solder area, with entire post underplated .000050 nickel

**Duplex D**—.000015 gold on contact area, .000100-.000200 tin-lead on solder area, with entire post underplated .000050 nickel

**Tin-Lead/Nickel**—.000100-.000200 tin-lead over .000050 nickel on entire post



**Recommended Pc Board Hole Layout**

\* ± .003 tolerances not to accumulate within one connector pattern.

No. of Pos.	Dimensions		Packaging Quantity	Post Plating		
	A	B		Duplex C	Duplex D	Tin-Lead/Nickel
6	.412	.332	100	103166-1	102617-1	3-87579-5
8	.512	.432	100	103166-2	102617-2	87579-1
10	.612	.532	100	103166-3	102617-3 *	87579-2
20	1.112	1.032	50	103166-8	102617-8	87579-7
24	1.312	1.232	50	1-103166-0	1-102617-0	87579-9
26	1.412	1.332	50	1-103166-1	1-102617-1	1-87579-0
34	1.812	1.732	50	1-103166-5	1-102617-5	—
40	2.112	2.032	50	1-103166-8	1-102617-8	1-87579-7
50	2.612	2.532	50	2-103166-3	2-102617-3	2-87579-2
60	3.112	3.032	50	2-103166-8	2-102617-8	2-87579-7

973-233

973-245 12

102617-4

Standard Profile Headers—  
Shrouded