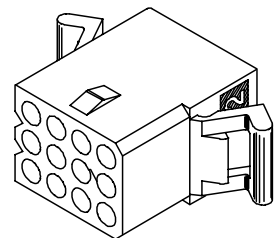


PLUG HOUSING (NOT TO SCALE)



RECEPTACLE HOUSING (NOT TO SCALE)

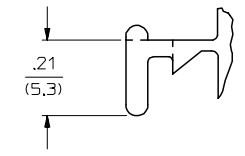
TRANSLATED TO S.D. EC NO: UCP2004-2551 DRAWN:RHOLTS 2004/12/03 CHKD:FSMTH 2004/12/03 APPR:FSMTH 2004/12/06	QUALITY SYMBOLS	GENERAL TOLERANCES (UNLESS SPECIFIED)		SCALE 1:1	DESIGN UNITS INCH	THIRD ANGLE PROJECTION	REVISE ON CAD ONLY	
	0 0		m/m	INCH	DIMENSION STYLE IN/MM		TITLE	
		4 PLACES	± ---	± ---	DRAWN BY GWC	DATE 1993/02/01	.062/(1.57) HOUSINGS, PLUG & RECEPTACLE 12 CKT, 145 CENTERS	
		3 PLACES	± ---	± .010	CHECKED BY RW	DATE 1993/02/01	MOLEX INCORPORATED	
	2 PLACES	± 0.25	± .014	APPROVED BY RAS	DATE 1993/02/01	MATERIAL NO. SEE CHART	DOCUMENT NO. SD-1625-12*	
	1 PLACE	± 0.36	± ---	DRAFT WHERE APPLICABLE MUST REMAIN WITHIN DIMENSIONS		SHEET NO. 1 OF 2		
THIS DRAWING CONTAINS INFORMATION THAT IS PROPRIETARY TO MOLEX INCORPORATED AND SHOULD NOT BE USED WITHOUT WRITTEN PERMISSION								

PLUG	
PART NO.	ENG. NO.
03-06-2121	1625-12P
03-06-7121	1625-12PBK
03-06-2122	1625-12P1
03-06-7122	1625-12P1BK

RECEPTACLE	
PART NO.	ENG. NO.
03-06-1121	1625-12R
03-06-6121	1625-12RBK
03-06-1122	1625-12R1
03-06-6122	1625-12R1BK
	OBSOLETE

RECEPTACLE LEGEND

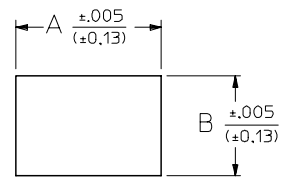
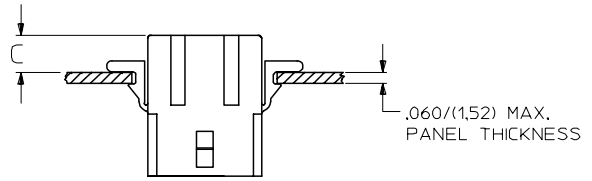
1625-12R\*\*\*  
 CIRCUIT SIZE  
 R = RECEPTACLE  
 BLANK = WITH PREBENT MOUNTING EARS  
 1 = WITHOUT EARS  
 COLOR:  
 BLANK = NATURAL COLOR  
 AM = AMBER BK = BLACK BU = BLUE  
 BN = BROWN GY = GRAY GN = GREEN  
 OR = ORANGERD = RED YW = YELLOW



DETAIL 1  
STANDARD MOUNTING EAR  
SCALE 4:1

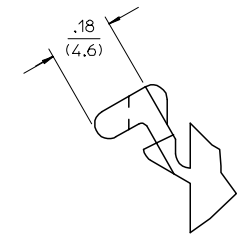
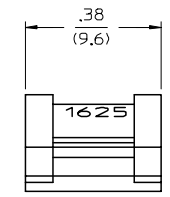
PLUG LEGEND

1625-12P\*\*\*  
 CIRCUIT SIZE  
 P = PLUG  
 BLANK = WITH PREBENT EARS  
 1 = WITHOUT EARS  
 COLOR:  
 BLANK = NATURAL COLOR  
 AM = AMBER BK = BLACK BU = BLUE  
 BN = BROWN GY = GRAY GN = GREEN  
 OR = ORANGE RD = RED YW = YELLOW



RECOMMENDED HOLE PATTERN

RECEP.	.795 (20.19)	.563 (14.30)		.23 (5.8)
PLUG	.903 (22.94)	.614 (15.60)	.21 (5.3)	.22 (5.5)
PART	DIM. A	DIM. B	DIM. C (STANDARD EAR)	DIM. C (PREBENT EAR)



DETAIL 2  
.062/(1.57) PREBENT MOUNTING EAR  
SCALE 4:1

NOTES:

1. MATERIAL: NYLON TYPE 6/6, 94V-2.
  2. FINISH: NONE
  3. PRODUCT SPECIFICATION: PS-02-06
  4. PACKAGING INFORMATION: PK-1625-001
  5. THIS HOUSING FOR USE WITH .062/(1.57) DIA. TERMINALS.
- WHERE DENOTED IN CHART, TOOLS ARE BUILT WITH PREBENT MOUNTING EARS PER DETAIL 2 AND SUPERSEDE ALL TOOLS PREVIOUSLY BUILT WITH THE STANDARD MOUNTING EARS.
- CIRCUIT ID. NUMBERS APPEAR ON PARTS FROM TOOLS BUILT AFTER 2/1/93.

TRANSLATED TO SD. ELC NO: UCP2004-2551 DRAWN: RHOLTS 2004/12/03 CHKD: FSMITH 2004/12/03 APPR: FSMITH 2004/12/06	QUALITY SYMBOLS	GENERAL TOLERANCES (UNLESS SPECIFIED) 4 PLACES ± --- ± --- 3 PLACES ± --- ± .010 2 PLACES ± 0.25 ± .014 1 PLACE ± 0.36 ± --- ANGULAR ± 1 ° DRAFT WHERE APPLICABLE MUST REMAIN WITHIN DIMENSIONS	SCALE 1:1	DESIGN UNITS INCH	THIRD ANGLE PROJECTION	REVISE ON CAD ONLY
	DIMENSION STYLE IN/MM		TITLE	.062/(1.57) HOUSINGS, PLUG & RECEPTACLE 12 CKT, 145 CENTERS		
	DRAWN BY DATE GWC 1993/02/01 CHECKED BY DATE RW 1993/02/01 APPROVED BY DATE RAS 1993/02/01		MATERIAL NO. SEE CHART DOCUMENT NO. SD-1625-12* SHEET NO. 2 OF 2	MOLEX INCORPORATED		
	THIS DRAWING CONTAINS INFORMATION THAT IS PROPRIETARY TO MOLEX INCORPORATED AND SHOULD NOT BE USED WITHOUT WRITTEN PERMISSION					

PLUG	
PART NO.	ENG. NO.
03-06-2121	1625-12P
03-06-7121	1625-12PBK
03-06-2122	1625-12P1
03-06-7122	1625-12PBK

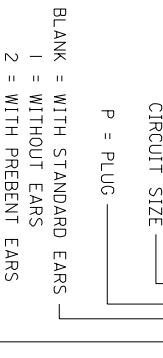
RECEPTACLE	
PART NO.	ENG. NO.
03-06-1121	1625-12R
03-06-6121	1625-12R BK
03-06-1122	1625-12R1
03-06-6122	1625-12R1BK

RECEPTACLE LEGEND	
PART NO.	ENG. NO.
03-06-1121	1625-12R***
03-06-6121	1625-12R BK
03-06-1122	1625-12R1
03-06-6122	1625-12R1BK

RECEPTACLE LEGEND	
PART NO.	ENG. NO.
03-06-1121	1625-12R***
03-06-6121	1625-12R BK
03-06-1122	1625-12R1
03-06-6122	1625-12R1BK

**PLUG LEGEND**

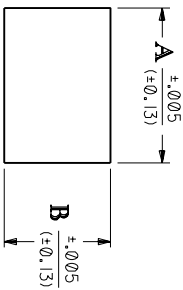
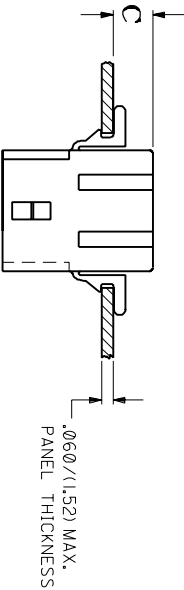
1625-12P\*\*\*



COLOR: \_\_\_\_\_  
 BLANK = NATURAL COLOR  
 AM = AMBER BK = BLACK BU = BLUE  
 BN = BROWN CY = GRAY GN = GREEN  
 OR = ORANGE RD = RED YW = YELLOW

CIRCUIT SIZE \_\_\_\_\_  
 R = RECEPTACLE  
 I = WITHOUT EARS

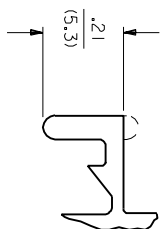
COLOR: \_\_\_\_\_  
 BLANK = NATURAL COLOR  
 AM = AMBER BK = BLACK BU = BLUE  
 BN = BROWN CY = GRAY GN = GREEN  
 OR = ORANGE RD = RED YW = YELLOW



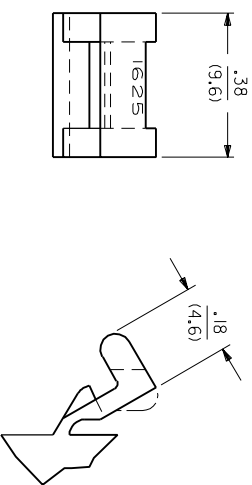
**RECOMMENDED HOLE PATTERN**

RECEP.	.795 (20.19)	.563 (14.30)	.23 (5.8)
PLUG	.903 (22.94)	.614 (15.60)	.22 (5.5)
PART	DIM. A	DIM. B (STANDARD EAR)	DIM. C (PREBENT EAR)

- NOTES:**
1. MATERIAL: NYLON TYPE 6/6, 94V-2.
  2. THIS PART COMPLIES WITH MOLEX PRODUCT SPEC. 02-06.
  3. THIS HOUSING FOR USE WITH .062/(1.57) DIA. TERMINALS.
- WHERE DENOTED IN CHART, TOOLS ARE BUILT WITH PREBENT MOUNTING EARS PER DETAIL 2 AND SUPERSEDE ALL TOOLS PREVIOUSLY BUILT WITH THE STANDARD MOUNTING EARS.
5. CIRCUIT I.D. NUMBERS APPEAR ON PARTS FROM TOOLS BUILT AFTER 2/1/93.



**DETAIL 1**  
 STANDARD MOUNTING EAR  
 SCALE 4:1



**DETAIL 2**  
 .062/(1.57) PREBENT MOUNTING EAR  
 SCALE 4:1

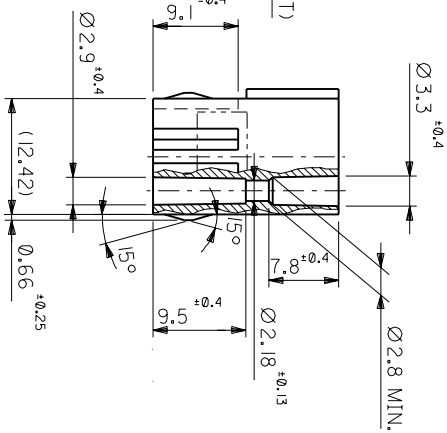
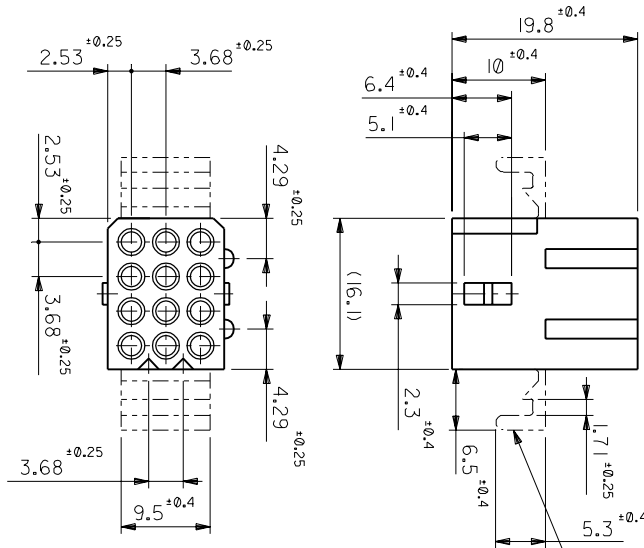
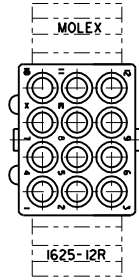
UNLESS OTHERWISE SPECIFIED, DIMENSIONS SHOWN IN INCHES AND METRIC DIMENSIONS SHOWN IN PARENTHESES.

REVISIONS: SEE SHEET 1

TR.	BY	DATE	DESCRIPTION
1	RAS	4/1/93	INITIAL RELEASE

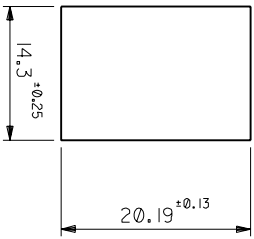
MOLEX INCORPORATED  
 12 CIRCUIT - 145/(3.68) CTRS.  
 DATE: 2/1/93  
 DRAWING NO.: SD-1625-12

THIS DRAWING CONTAINS INFORMATION THAT IS PROPRIETARY TO MOLEX INC. AND SHOULD NOT BE USED WITHOUT WRITTEN PERMISSION FROM MOLEX INC.



ノズル取付目 (表参照)  
MTG. EARS(SEE CHART)

ノズル取付寸法 (厚さ 1.52最大)  
RECOMMENDED PANEL HOLE DIMENSION(THK. 1.52 MAX.)



注記  
NOTE

材質: ZYTEL 101. (ナイロン66, 94V-2)  
MATERIAL: ZYTEL 101.(NYLON66,94V-2)

角度 ANGLE	30°
30度止	±0.3
10度止	±0.25
10度止	±0.25
10度止	±0.2
GENERAL TOLERANCES	

材料 MATERIAL	中参照	MOLEX-JAPAN CO.,LTD.
REFER TO DRAWING		モレックス株式会社
仕上げ FINISH	—	REVISE ONLY ON CAD SYSTEM
適用電線範囲 WIRE RANGE	—	0.62 DIA. 12 CIRCUIT
被覆外径 INS. RANGE	—	RECEPT. HOUSING
DRAWN BY: %6/07/03 H.H.IJIMA	CHK'D BY: %6/07/03 M.F.KUSHIWA	DWG. NO. SD-1625-12R*
APP'D BY: %6/07/03	SCALE 2 : 1	REV C
DR. CHK. DATE		
製作図 C	配置内番 CQ7085	
REV. REVISION RECORD		

1625-12R1	無 WITHOUT
1625-12R	有 WITH
ENG. NO.	MTG. EARS

THIS DRAWING CONTAINS INFORMATION THAT IS PROPRIETARY TO MOLEX(JAPAN) AND SHOULD NOT BE USED WITHOUT WRITTEN PERMISSION  
本図面はモレックス(株)の所有する情報を含むものを、当社の許可なく複製を禁止する。