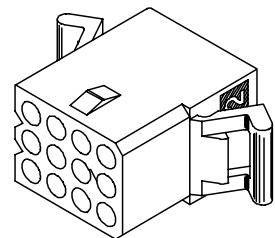


PLUG HOUSING (NOT TO SCALE)



RECEPTACLE HOUSING (NOT TO SCALE)

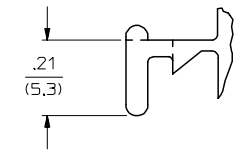
TRANSLATED TO S.D. EC NO: UCP2004-2551 DRAWN: RHOLTS 2004/12/03 CHKD: FSMITH 2004/12/03 APPR: FSMITH 2004/12/06	DESCRIPTION	QUALITY SYMBOLS	GENERAL TOLERANCES (UNLESS SPECIFIED)		SCALE 1:1	DESIGN UNITS INCH	THIRD ANGLE PROJECTION	REVISE ON CAD ONLY
		▽ -0 ◻ -0		mm	INCH	DIMENSION STYLE IN/MM		TITLE
			4 PLACES	± ---	± ---	DRAWN BY GWC	DATE 1993/02/01	.062/(1.57) HOUSINGS, PLUG & RECEPTACLE 12 CKT, 145 CENTERS
			3 PLACES	± ---	± .010	CHECKED BY RW	DATE 1993/02/01	
	2 PLACES	± 0.25	± .014	APPROVED BY RAS	DATE 1993/02/01	MATERIAL NO. SEE CHART	DOCUMENT NO. SD-1625-12*	SHEET NO. 1 OF 2
	1 PLACE	± 0.36	± ---	DRAFT WHERE APPLICABLE MUST REMAIN WITHIN DIMENSIONS		THIS DRAWING CONTAINS INFORMATION THAT IS PROPRIETARY TO MOLEX INCORPORATED AND SHOULD NOT BE USED WITHOUT WRITTEN PERMISSION		

PLUG	
PART NO.	ENG. NO.
03-06-2121	1625-12P
03-06-7121	1625-12PBK
03-06-2122	1625-12P1
03-06-7122	1625-12P1BK

RECEPTACLE	
PART NO.	ENG. NO.
03-06-1121	1625-12R
03-06-6121	1625-12RBK
03-06-1122	1625-12R1
03-06-6122	1625-12R1BK
	OBSOLETE

RECEPTACLE LEGEND

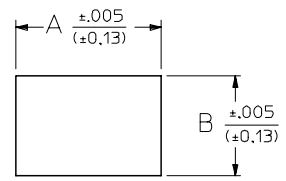
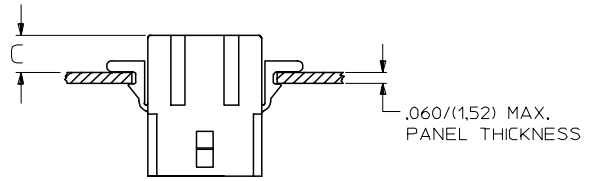
1625-12R***
 CIRCUIT SIZE
 R = RECEPTACLE
 BLANK = WITH PREBENT MOUNTING EARS
 1 = WITHOUT EARS
 COLOR:
 BLANK = NATURAL COLOR
 AM = AMBER BK = BLACK BU = BLUE
 BN = BROWN GY = GRAY GN = GREEN
 OR = ORANGERD = RED YW = YELLOW



DETAIL 1
 STANDARD MOUNTING EAR
 SCALE 4:1

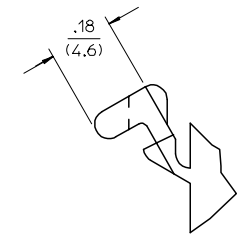
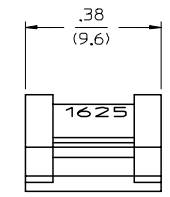
PLUG LEGEND

1625-12P***
 CIRCUIT SIZE
 P = PLUG
 BLANK = WITH PREBENT EARS
 1 = WITHOUT EARS
 COLOR:
 BLANK = NATURAL COLOR
 AM = AMBER BK = BLACK BU = BLUE
 BN = BROWN GY = GRAY GN = GREEN
 OR = ORANGE RD = RED YW = YELLOW



RECOMMENDED HOLE PATTERN

RECEP.	.795 (20.19)	.563 (14.30)		.23 (5.8)
PLUG	.903 (22.94)	.614 (15.60)		.22 (5.5)
PART	DIM. A	DIM. B	DIM. C (STANDARD EAR)	DIM. C (PREBENT EAR)



DETAIL 2
 .062/(1.57) PREBENT MOUNTING EAR
 SCALE 4:1

NOTES:

1. MATERIAL: NYLON TYPE 6/6, 94V-2.
 2. FINISH: NONE
 3. PRODUCT SPECIFICATION: PS-02-06
 4. PACKAGING INFORMATION: PK-1625-001
 5. THIS HOUSING FOR USE WITH .062/(1.57) DIA. TERMINALS.
- WHERE DENOTED IN CHART, TOOLS ARE BUILT WITH PREBENT MOUNTING EARS PER DETAIL 2 AND SUPERSEDE ALL TOOLS PREVIOUSLY BUILT WITH THE STANDARD MOUNTING EARS.
- CIRCUIT ID. NUMBERS APPEAR ON PARTS FROM TOOLS BUILT AFTER 2/1/93.

TRANSLATED TO SD. ELC NO: UCP2004-2551 DRAWN: RHOLTS 2004/12/03 CHKD: FSMTH 2004/12/03 APPR: F SMITH 2004/12/06	QUALITY SYMBOLS -0 -0	GENERAL TOLERANCES (UNLESS SPECIFIED) 4 PLACES ± --- ± --- 3 PLACES ± --- ± .010 2 PLACES ± 0.25 ± .014 1 PLACE ± 0.36 ± --- ANGULAR ± 1 °	SCALE 1:1 DESIGN UNITS INCH DIMENSION STYLE IN/MM	THIRD ANGLE PROJECTION REVISE ON CAD ONLY
	DRAFT WHERE APPLICABLE MUST REMAIN WITHIN DIMENSIONS	DRAWN BY DATE GWC 1993/02/01 CHECKED BY DATE RW 1993/02/01 APPROVED BY DATE RAS 1993/02/01	TITLE .062/(1.57) HOUSINGS, PLUG & RECEPTACLE 12 CKT, 145 CENTERS	MATERIAL NO. SEE CHART DOCUMENT NO. SD-1625-12* SHEET NO. 2 OF 2
	THIS DRAWING CONTAINS INFORMATION THAT IS PROPRIETARY TO MOLEX INCORPORATED AND SHOULD NOT BE USED WITHOUT WRITTEN PERMISSION			
	MOLEX INCORPORATED			

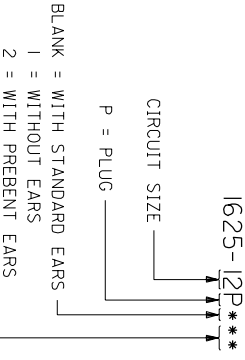
PLUG	
PART NO.	ENG. NO.
03-06-2121	1625-12P
03-06-7121	1625-12PBK
03-06-2122	1625-12P1
03-06-7122	1625-12PBK

RECEPTACLE	
PART NO.	ENG. NO.
03-06-1121	1625-12R
03-06-6121	1625-12R BK
03-06-1122	1625-12R1
03-06-6122	1625-12R1BK

RECEPTACLE LEGEND	
PART NO.	ENG. NO.
03-06-1121	1625-12R***
03-06-6121	1625-12R BK
03-06-1122	1625-12R1
03-06-6122	1625-12R1BK

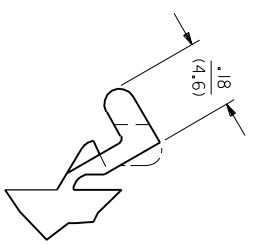
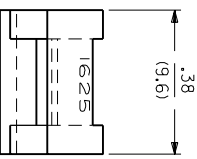
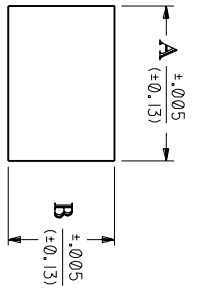
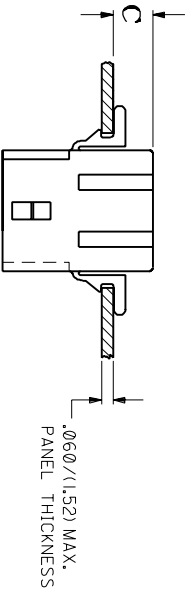
RECEPTACLE LEGEND	
PART NO.	ENG. NO.
03-06-1121	1625-12R***
03-06-6121	1625-12R BK
03-06-1122	1625-12R1
03-06-6122	1625-12R1BK

PLUG LEGEND



COLOR: _____
 BLANK = NATURAL COLOR
 AM = AMBER BK = BLACK BU = BLUE
 BN = BROWN CY = GRAY GN = GREEN
 OR = ORANGE RD = RED YW = YELLOW

COLOR: _____
 BLANK = NATURAL COLOR
 AM = AMBER BK = BLACK BU = BLUE
 BN = BROWN CY = GRAY GN = GREEN
 OR = ORANGE RD = RED YW = YELLOW



RECOMMENDED HOLE PATTERN

RECEP.	.795 (20.19)	.563 (14.30)	.23 (5.8)
PLUG	.903 (22.94)	.614 (15.60)	.22 (5.5)
PART	DIM. A	DIM. B	DIM. C (STANDARD EAR) (PREBENT EAR)

DETAIL 2

.062/(1.57) PREBENT MOUNTING EAR
 SCALE 4:1

DETAIL 1

STANDARD MOUNTING EAR
 SCALE 4:1

- NOTES:**
1. MATERIAL: NYLON TYPE 6/6, 94V-2.
 2. THIS PART COMPLIES WITH MOLEX PRODUCT SPEC. 02-06.
 3. THIS HOUSING FOR USE WITH .062/(1.57) DIA. TERMINALS.
- WHERE DENOTED IN CHART, TOOLS ARE BUILT WITH PREBENT MOUNTING EARS PER DETAIL 2 AND SUPERSEDE ALL TOOLS PREVIOUSLY BUILT WITH THE STANDARD MOUNTING EARS.
5. CIRCUIT I.D. NUMBERS APPEAR ON PARTS FROM TOOLS BUILT AFTER 2/1/93.

UNLESS OTHERWISE SPECIFIED, DIMENSIONS SHOWN IN INCH (METRIC DIMENSIONS IN PARENTHESES) SHALL BE TO DIMENSIONS UNLESS OTHERWISE SPECIFIED TO TOLERANCES SHOWN IN PARENTHESES.

REVISIONS: SEE SHEET 1

REVISIONS: BY DATE

REVISIONS: BY DATE

REVISIONS: BY DATE

REVISIONS: BY DATE

MOLEX INCORPORATED
 12 CIRCUIT - (145/(3.68) CTRS.
 SD-1625-12
 DATE 2/1/93

