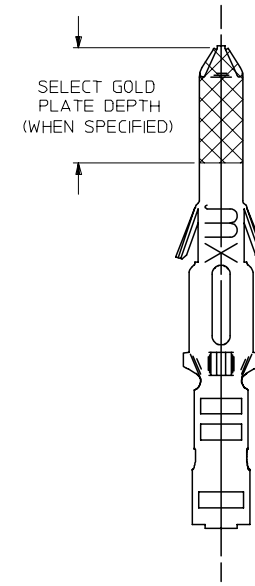
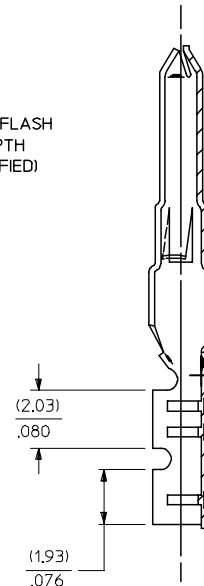
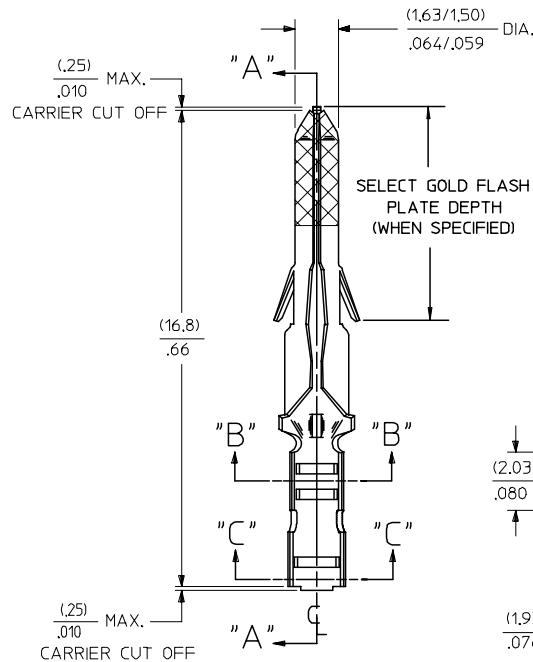
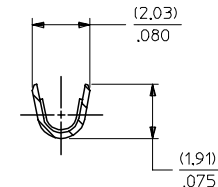
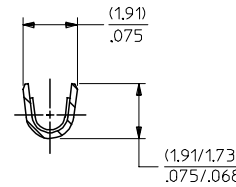
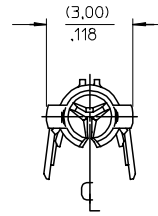
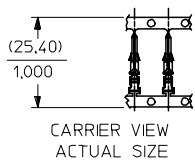


| PART NO. | ENG. NO. | |
|------------|-------------|----------|
| 02-06-2131 | 1854-(901) | |
| 02-06-2132 | 1854-(901)L | |
| 02-06-2134 | 1854-(901)1 | OBSOLETE |
| 02-06-6137 | 1854-(591) | |
| 02-06-6136 | 1854-(591)L | |
| 02-06-6138 | 1854-(561) | |
| 02-06-6139 | 1854-(561)L | |
| 02-06-6130 | 1854-(550) | |
| 02-06-6135 | 1854-(550)L | |
| 02-06-6143 | 1854-(228) | |
| 02-06-6144 | 1854-(228)L | |
| 02-06-6145 | 1854-(603)1 | OBSOLETE |



SECT. "A-A"

LEGEND

1854-(****)*

- P=PREPLATE
- BLANK=POSTPLATE
- FINISH CODE
- FORM BLANK=CHAIN
- 1=CHAIN WITH INTERLEAF PAPER ON REEL.
- L=LOOSE

NOTES:

1. MATERIAL: BRASS
2. FINISHES:
 - 901 HOT TIN DIP (.00051)/.000020 MIN.
 - * 228 SELECT GOLD PLATE (.00075)/.000030 MIN. IN CONTACT AREA, SELECT TIN (.00250)/.000100 MIN. IN CRIMP AREA OVER (.00125)/.000050 MIN. NICKEL OVERALL, WITH (.000010)/.000025 MAX. SELECT GOLD FLASH AS INDICATED.
 - 561 SELECT GOLD PLATE (.00076)/.000030 MIN. IN CONTACT AREA, (.00127)/.000050 MIN. NICKEL OVERALL.
 - 591 SELECT GOLD PLATE (.00127)/.000050 MIN. IN CONTACT AREA, OVER (.00127)/.000050 MIN. NICKEL OVERALL WITH (.00025)/.000010 MAX. GOLD FLASH OVERALL.
 - 550 SELECT GOLD PLATE (.00038)/.000015 MIN. IN CONTACT AREA, OVER (.00076)/.000030 MIN. NICKEL OVERALL WITH (.00025)/.000010 MAX. GOLD FLASH OVERALL.
- * THE PRIMARY SHIPPING CARTON WILL BE LABELED, "COMPLIANT TO RoHS DIRECTIVE 2002/95/EC AND ELV ANNEX II OF DIRECTIVE 2000/53/EC", CARTONS WITHOUT THIS LABEL MAY CONTAIN PRODUCT WITH TIN-LEAD.
3. PRODUCT SPECIFICATIONS: PS-02-06
4. PACKAGING INFORMATION: NOT AVAILABLE
5. TERMINAL FOR USE WITH (1,57)/.062 DIA. SERIES HOUSINGS AND WILL ACCEPT 24 THRU 30 AWG. WIRE WITH (1,02/2,29)/.040/0.090 INSULATION DIA.

WORK AREA

SEE REVISION BLOCK FOR LOT
 EC NO: UPRC2004-2097
 DRAWN/RHOLTS 04/27/2004
 CHKD:
 APPR:

| | | | | | | |
|-----------------|---------------------------------------|--------|-------------------------------------------------------------------------------------------------------------------------------|-------------------------|------------------------|--------------------------------------------------------------------------------------------------------------------|
| QUALITY SYMBOLS | GENERAL TOLERANCES (UNLESS SPECIFIED) | | SCALE 8:1 | DESIGN UNITS INCH | THIRD ANGLE PROJECTION | REVISE ON CAD ONLY |
| | | mm | INCH | DIMENSION STYLE INCH/MM | | TITLE |
| = 0 = 0 | 4 PLACES | ± --- | ± --- | DRAWN BY GEP | DATE 9/27/87 | CRIMP TERMINAL, MALE (1,57)/.062 DIA., BRASS FOR 24 THRU 30 GA. WIRE MOLEX INCORPORATED |
| | 3 PLACES | ± --- | ± .010 | CHECKED BY RW | DATE 9/27/87 | |
| | 2 PLACES | ± 0.25 | ± .035 | APPROVED BY RAS | DATE 9/27/87 | |
| 1 PLACE | ± 0.35 | ± --- | ANGULAR ± 1/2° | | DRAFT WHERE APPLICABLE | |
| | MUST REMAIN WITHIN DIMENSIONS | | THIS DRAWING CONTAINS INFORMATION THAT IS PROPRIETARY TO MOLEX INCORPORATED AND SHOULD NOT BE USED WITHOUT WRITTEN PERMISSION | | | |

| | |
|-----|----------------------------------------------------------------|
| AP | REMV Sn/Pb PLATING REDRAWN TO ME10 UCP2004-2097 RHOLTS 5/07/04 |
| AN | OBSOLETE P/N UCR2002-0270 COMERC 01/9/27 |
| AM2 | OBSOLETE -675 & -675L ECR U6 0358 9/15/95 RW |
| AM1 | ADD -(603)1 PER ERO #30605 11-5-90 RW |
| AM | REV. & REDRAWN PER ECR 10372 GEP 9-21-87 RW |