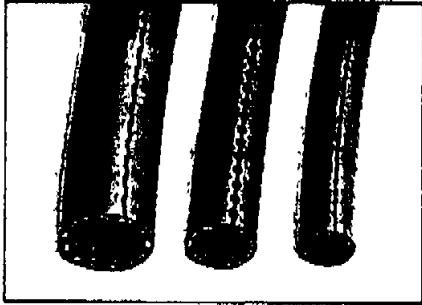


The complete hose range

The range includes three different basic types of hoses, which will virtually cover any requirement in compressed air handling.



Braided PUR hose

For demanding applications between compressor and air tool.





Non-braided PUR hose

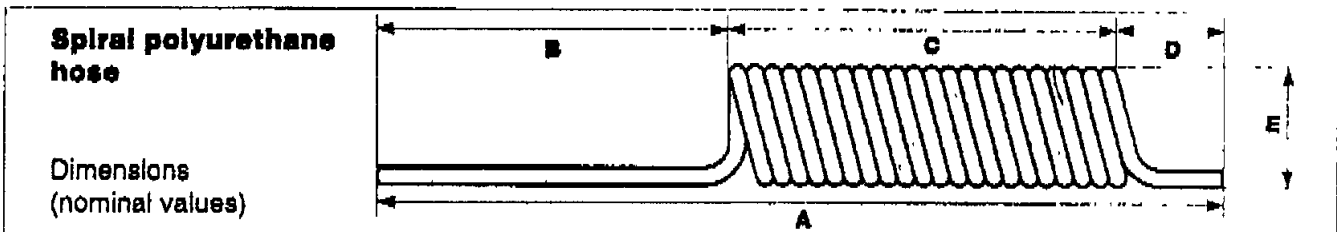
For automation and lighter air tool applications.



Spiral PUR hose

For factory assembling lines.

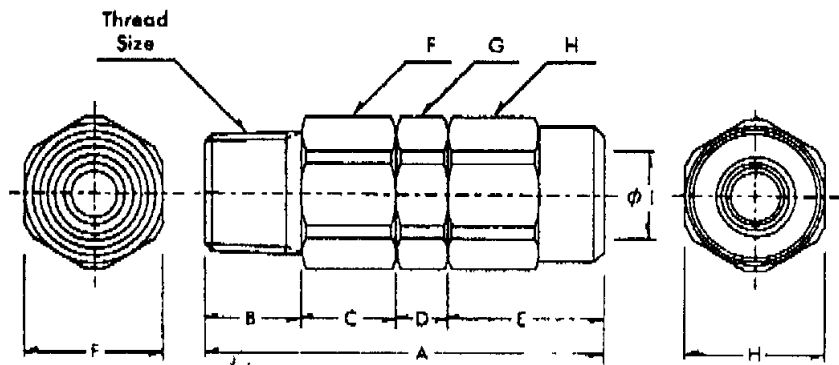
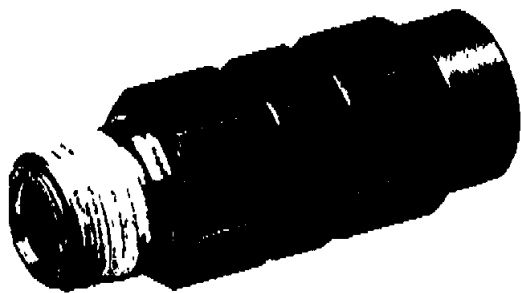
Braided polyurethane hose 	Part No.	Size ID x OD mm	Max working* press. BAR/PSI	Total length per roll
		19 958 1000	6.5 x 10.0	16/232
	19 958 1200	8.0 x 12.0	16/232	100 m
	19 958 1600	11.0 x 16.0	16/232	100 m
Non-braided polyurethane hose 	19 958 0802	5.0 x 8.0	10/145	100 m
	19 958 1002	6.5 x 10.0	10/145	100 m
	19 958 1202	8.0 x 12.0	10/145	100 m
	19 958 1602	11.0 x 16.0	10/145	100 m



Part No.	Size ID x OD mm	Service length m	Total hose length m	A mm	B mm	C mm	D mm	E mm	Max working* pressure BAR/PSI
19 958 5820	5.0 x 8.0	2,0	2,5	740	500	140	100	42	10/145
19 958 5840	5.0 x 8.0	4,0	5,0	930	500	330	100	42	10/145
19 958 5860	5.0 x 8.0	6,0	7,5	1120	500	520	100	42	10/145
19 958 5880	5.0 x 8.0	8,0	10,0	1300	500	700	100	42	10/145
19 958 6020	6.5 x 10.0	2,0	2,5	740	500	140	100	52	10/145
* 19 958 6040	6.5 x 10.0	4,0	5,0	930	500	330	100	52	10/145
19 958 6060	6.5 x 10.0	6,0	7,5	1120	500	520	100	52	10/145
19 958 6080	6.5 x 10.0	8,0	10,0	1310	500	710	100	52	10/145
19 958 6220	8.0 x 12.0	2,0	2,5	740	500	140	100	65	10/145
19 958 6240	8.0 x 12.0	4,0	5,0	920	500	320	100	65	10/145
19 958 6260	8.0 x 12.0	6,0	7,5	1100	500	500	100	65	10/145
19 958 6280	8.0 x 12.0	8,0	10,0	1280	500	680	100	65	10/145
19 958 6620	11.0 x 16.0	2,0	2,5	720	500	120	100	108	10/145
19 958 6640	11.0 x 16.0	4,0	5,0	880	500	280	100	108	10/145
19 958 6660	11.0 x 16.0	6,0	7,5	1040	500	440	100	108	10/145
19 958 6680	11.0 x 16.0	8,0	10,0	1210	500	610	100	108	10/145

* Rated at +20°C/+68°F. For higher temperatures, please ask for separate temp./pressure chart

MALE SWIVEL FITTINGS



MALE SWIVEL NPT

SPECIFICATIONS

Model	Thread Size NPT	Hose Size I.D. & O.D.	Dimensions								
			A	B	C	D	E	F	G	H	I
GTU-516-2	1/4 - 18 NPT	3/16 - 5/16	1.75	.47	.41	.28	.59	.55	.55	.55	.32
GTU-38-2	1/4 - 18 NPT	1/4 - 3/8	1.83	.47	.41	.28	.67	.55	.63	.63	.38
GTU-38-3	3/8 - 18 NPT	1/4 - 3/8	1.83	.51	.37	.28	.67	.67	.63	.63	.38
GTU-12-3	3/8 - 18 NPT	21/64 - 1/2	1.85	.51	.28	.28	.79	.75	.75	.75	.51
GTU-12-4	1/2 - 14 NPT	21/64 - 1/2	2.01	.63	.31	.28	.79	.87	.75	.75	.51
GTU-58-3	3/8 - 18 NPT	13/32 - 5/8	2.09	.51	.28	.31	.98	.75	.94	.94	.63
GTU-58-4	1/2 - 14 NPT	13/32 - 5/8	2.24	.63	.31	.31	.98	.87	.94	.94	.63

MALE SWIVEL BSPT

SPECIFICATIONS