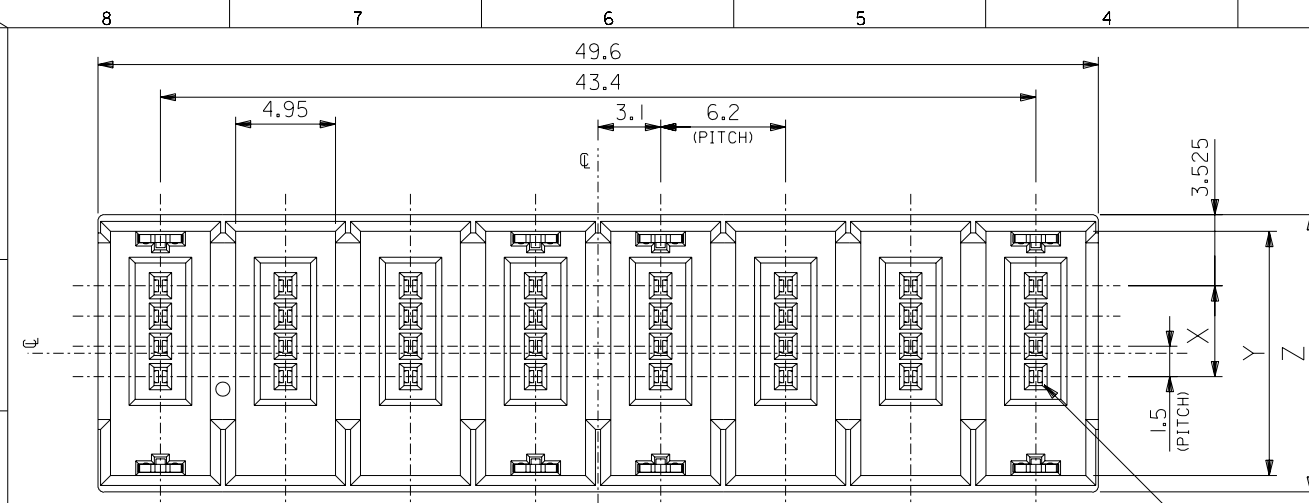


DWG. NO. SD-500052-001

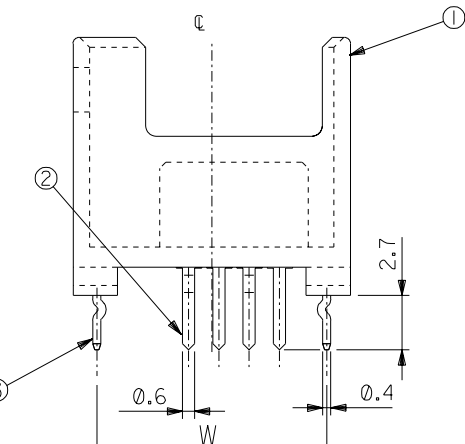
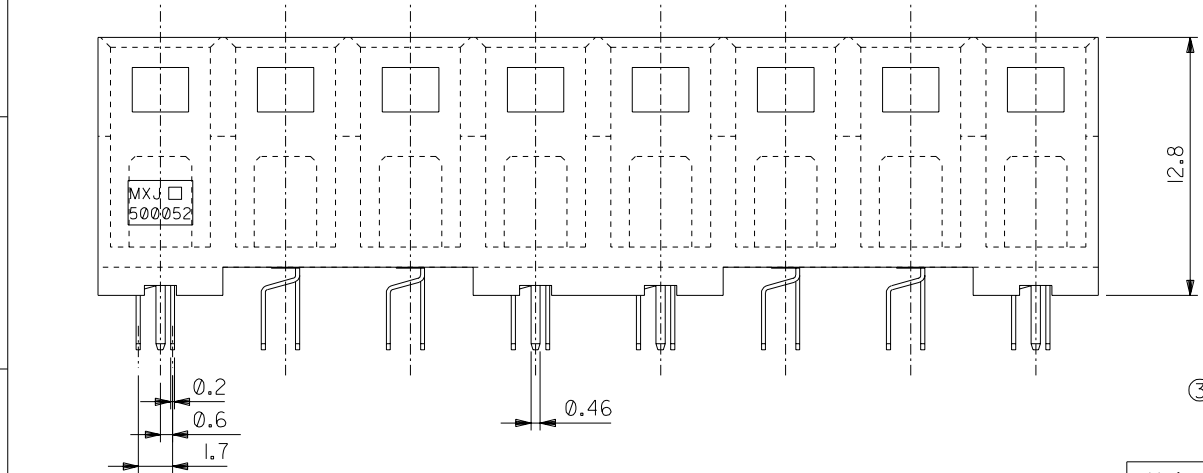


注記 NOTES.

1. 材料 MATERIAL
 ①ハウジング: ガラス入りPA66 UL94V-0 色:黒
 HOUSING: G.F. PA66 UL94V-0 COLOR: BLACK
 ②ターミナル: 銅合金
 TERMINAL: COPPER ALLOY
 ③ソルダーペグ: 銅合金
 SOLDER PEG: COPPER ALLOY

2. メッキ仕様 PLATING
 ターミナル TERMINAL
 接点部: 金メッキ 0.3 μm MIN.
 CONTACT AREA: GOLD 0.3 μm MIN.
 半田付け部: 半田メッキ 2.0 μm MIN.
 SOLDER AREA: TIN-LEAD 2.0 μm MIN.
 下地メッキ: ニッケル下地 2.0 μm MIN.
 UNDER PLATING AREA: NICKEL 2.0 μm MIN.
 ソルダーペグ SOLDER PEG
 半田付け部: 半田メッキ 2.0 μm MIN.
 SOLDER AREA: TIN-LEAD 2.0 μm MIN.

各ソケットの1極目
1st CKT. OF A SOCKET



11.4	4.5	12.1	13.75	500052-3200	500052-**00	4	32
9.9	3.0	10.6	12.25	500052-2400		3	24
W	X	Y	Z	製品番号 MATERIAL No.	MODEL No.	各ソケットの極数 CKT. SIZE OF A SOCKET	極数 CKT.

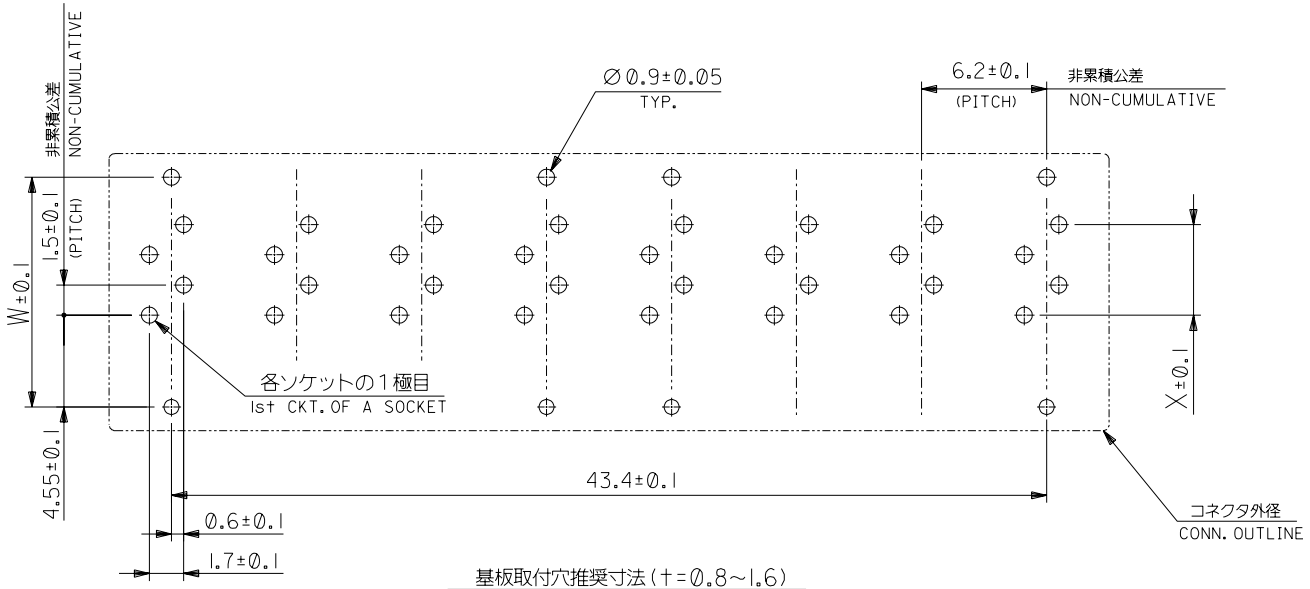
DO NOT SCALE DRAWING

EC NO. DRWN: CHK: APPR:	EC NO. DRWN: CHK: APPR:	REVISED EC NO. J2004-1553 DRWN: N. YOSHIDA '03/12/15 CHK: M. YAGI APPR: J. MIYAZAWA	REVISED EC NO. J2004-1512 DRWN: N. YOSHIDA '03/12/01 CHK: M. YAGI APPR: YO. ITO	RELEASED EC NO. J2003-1006 DRWN: N. YOSHIDA '02/10/22 CHK: M. YAGI APPR: YO. ITO	MATERIAL 材料 SEE NOTES	FINISH 仕上げ SEE NOTES	WIRE RANGE 適用線径範囲 — # —	INS. RANGE 被覆外径 — # —
----------------------------------	----------------------------------	---	---	--	--------------------------	-------------------------	----------------------------	--------------------------

GENERAL TOLERANCES: (UNLESS SPECIFIED) 一般公差	SCALE 4-1	DESIGN UNITS <input checked="" type="checkbox"/> mm <input type="checkbox"/> INCH	THIRD ANGLE PROJECTION <input checked="" type="checkbox"/> mm <input type="checkbox"/> INCH	DIMENSIONS: <input type="checkbox"/> mm <input type="checkbox"/> INCH <input checked="" type="checkbox"/> mm ONLY	SHT	REV	
10 UNDER 未油 ±0.2	DRAWN BY & DATE N. YOSHIDA '02/04/15	TITLE: 1.5mm PITCH EZ CONN. REC. ASS'Y (8 SOCKETS)					
10 OVER 30 UNDER 未油 ±0.25	CHECKED BY & DATE Y. Ito	MOLEX MOLEX INCORPORATED					
30 OVER 以上 ±0.3	APPROVED BY & DATE Y. Ito	CAD FILENAME SD-500052-001.S01	MATERIAL NO. SEE CHART	DRAWING NO. SD-500052-001	SHEET NO. 1 OF 2	SIZE B	
ANGLE 角度 ±3°	THIS DRAWING CONTAINS INFORMATION THAT IS PROPRIETARY TO MOLEX INCORPORATED AND SHOULD NOT BE USED WITHOUT WRITTEN PERMISSION.						

SD-500052-001S01

8 7 6 5 4 3 2 1



基板取付穴推奨寸法 (+ = 0.8 ~ 1.6)
RECOMMENDED P.C.B. HOLE DIM. (+ = 0.8 ~ 1.6)

EC NO. DRAWN: CHK: APPR:	EC NO. DRAWN: CHK: APPR:	EC NO. DRAWN: CHK: APPR:	EC NO. DRAWN: CHK: APPR:	EC NO. DRAWN: CHK: APPR:	EC NO. DRAWN: CHK: APPR:
					SEE SHEET 1

MATERIAL 材料	SEE SHEET 1
FINISH 仕上げ	SEE SHEET 1
WIRE RANGE 適用電線範囲	— # —
INS. RANGE 被覆外径	— # —

GENERAL TOLERANCES: (UNLESS SPECIFIED) 一般公差	SCALE 4-1	DESIGN UNITS mm INCH	THIRD ANGLE PROJECTION
10 UNDER 未満	±0.2	DRAWN BY & DATE N. YOSHIDA '02/04/15	TITLE: 1.5mm PITCH EZ CONN. REC. ASS'Y (8SOCKETS)
10 OVER 以上	±0.25	CHECKED BY & DATE Y. Ota	MOLEX MOLEX INCORPORATED
30 UNDER 未満	±0.3	APPROVED BY & DATE Y. Ota	CAD FILENAME SD-500052-001.S02
30 OVER 以上	±3°	MATERIAL NO. SEE SHEET 1	DRAWING NO. SD-500052-001
ANGLE 角度		SHEET NO. 2 OF 2	

DIMENSIONS: mm INCH mm ONLY	SHT	REV
THIS DRAWING CONTAINS INFORMATION THAT IS PROPRIETARY TO MOLEX INCORPORATED AND SHOULD NOT BE USED WITHOUT WRITTEN PERMISSION.		REVISIONS
SIZE B		