



APPROVAL SHEET

CUSTOMER :

PART NAME : PLASTIC STRAIN RELIEF

PART NO. : B908E303-1

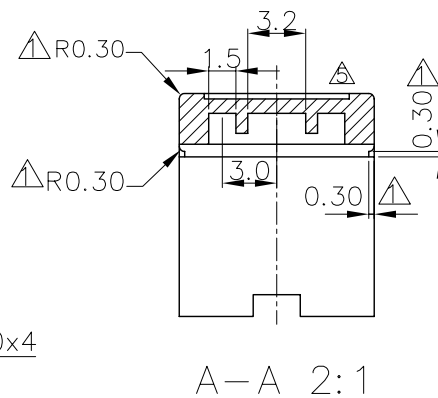
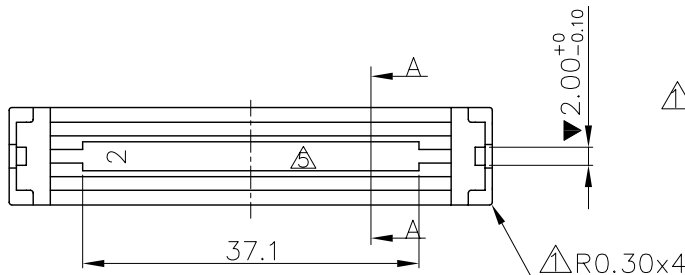
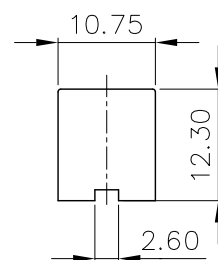
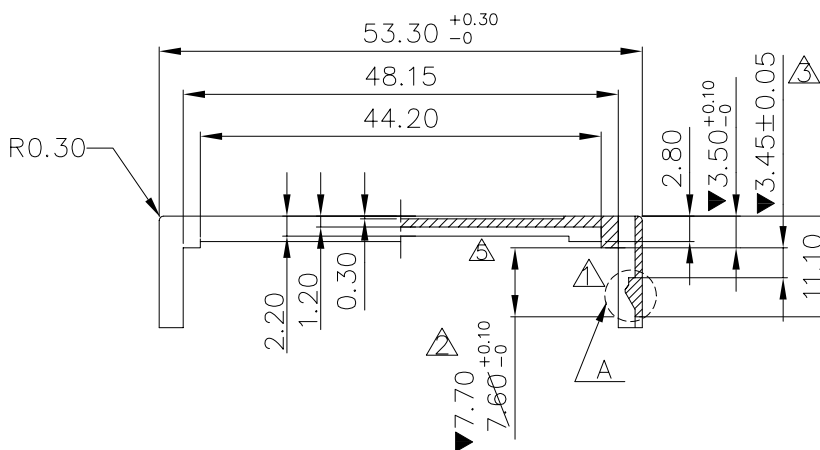
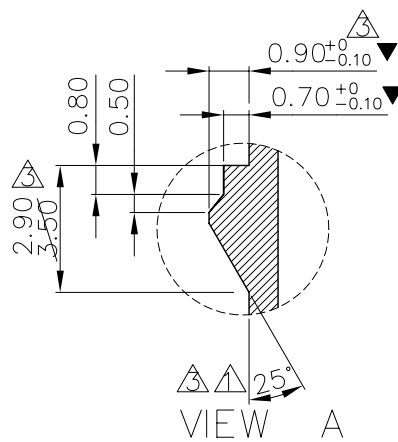
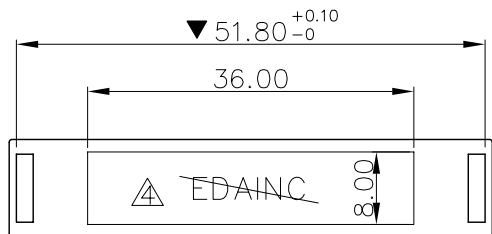
CUSTOMER P/N :

MANUFACTURER SIGNATURE			CUSTOMER SIGNATURE
SALES REP.	R & D DEPT.	QA DEPT.	
Susan	Peterhu	Handy	
DATE : 10/11/07	DATE : 10/11/07	DATE : 10/11/07	DATE : / /

FREEPORT

Wusha the 6th Industrial Zone, Wu Sha Village, Chang-An Town,
Dongguan City, Guangdong Province, China 523806
Tel: 86-769-85428686 Fax: 86-769-85428700

REV.	ZONE	LTR	DESCRIPTION	DATE	REVISER	APPD
1			增加作業說明	11/4-'97	徐月雲	
2		▲	設計變更	4/20'98	翁嘉徽	
3		▲	設計變更 7.60 ^{+0.1} ₀ — 7.70 ^{+0.1} ₀	10/13'99	徐富強	
4		▲	設計變更 1.10-0.90 30°-25° 3.30-3.45±0.05 3.50-2.90	11/29'99	黃東和	
5		▲	取消 LOGO	05/09/2K	徐富強	
6	D4	▲	依實物修改圖面	4/29/05	XYH	



注意：

1. 材質: PBT+30% GLASS-FIBER
2. 毛邊: 0.10mm(Max)
3. 標"▼"標記的尺寸為重點管控尺寸。

B908E*03		PART NO.	
TOLERANCE UNSPECIFIED			
.00 0 0	±		
.00 0	± 0.10		
.0	±		
ANGLE	±	SCALE	UNIT
DRAWN 徐月雲 1/31'96	NAME	1.2 : 1	mm
DESIGNER	8E 68PIN S/R		SHEET
CHECKED Peterhu 5/5'05	DRAWING NO. R-B908E-1		REV. 6
APPROVED JOHN 5/5'05			

Continue

性能 Properties	测定方法 Test Method	测定条件 Test Condition	单位 Unit	PBT-RG151	PBT-RG201	PBT-RG301
玻纤含量 Glass fiber content	—	—	%	15	20	30
比重 Specific Gravity	ASTM D792	23℃	g/cm ³	1.55	1.58	1.64
吸水率 Water Absorption	ASTM D570	23℃,24h	%	0.07	0.07	0.07
拉伸强度 Tensile Strength	ASTM D527	At break	MPa	95	105	120
拉伸伸长率 Tensile Elongation		At break	%	3.4	3.1	2.6
艾佐缺口冲击强度 IZOD Notched Impact Strength	ASTM D638	23℃	J/m	70	75	80
弯曲强度 Flexural Strength	ASTM D790	23℃	MPa	150	165	190
弯曲模量 Flexural Modulus		23℃	MPa	5600	6800	9000
洛氏硬度 Rockwell Hardness	ASTM D785	R scale	-	119	120	120
成型收缩率 Molding Shrinkage	ASTM D955	3.2mm	%	0.5/1.1	0.4/1.0	0.3/0.9
热变形温度 Heat Deflection Temp.	ASTM D648	0.45MPa	℃	215	216	220
		1.8MPa	℃	205	208	210
燃烧性 Flammability	UL94	0.75~3.0 mm	-	V-0	V-0	V-0
体积电阻率 Volume Resistivity	ASTM D257	-	Ω·cm	10 ¹⁶	10 ¹⁶	10 ¹⁶
介电常数 Dielectric constant	ASTM D150	10 ⁶ Hz	-	3.5	3.5	3.5
介电强度 Dielectric strength	ASTM D149	23℃, 3.2mm	KV/mm	23	23	23
特性 Characteristic	阻燃, 高机械强度, 高耐温性, 电气性能好, 不喷霜 Flame retarded, high strength, good heat resistance, outstanding electrical properties, no blooming					

●各项数据是在标准测试方法规定条件下得出的代表性数据, 其数值不能在特定用途中作为性能的保证。The above data is based on typical values tested with standard methods, which is not guaranteed to be identical with that in particular use.

●有关详细技术性资料, 请随时和金发技术部联系。Please contact KINGFA Tech.Depart. for further details at any time.

GUANGZHOU KINGFA SCIENCE & TECHNOLOGY CO LTD GAO TANG INDUSTRY ZONE KEMULANG TIANHE GUANGZHOU GUANGDONG CHINA

Material Designation: **PBT-RG301**

Product Description: Polybutylene Terephthalate (PBT), modified, furnished as pellets.

Color	Min. Thick. (mm)	Flame Class	HWI	HAI	RTI Elec	RTI Imp	RTI Str	IEC GWIT	IEC GWFI
ALL	0.3	V-0	4	3	75	75	75	-	-
	0.75	V-0	2	3	130	125	140	-	-
	1.5	V-0	2	3	130	125	140	-	-
	3.0	V-0	0	3	130	125	140	-	-
CTI: 2			HVTR: 3		D495: 6		IEC BP: -		

(r1) Virgin and regrind material up to 50% by weight have the same V-0 flammability characteristics in the 0.3mm to 3.0mm thickness. No other properties for regrind have been evaluated.

Report Date: 10/31/2001

Underwriters Laboratories Inc®

268381001

UL94 small-scale test data does not pertain to building materials, furnishings and related contents. UL 94 small-scale test data is intended solely for determining the flammability of plastic materials used in components and parts of end-product devices and appliances, where the acceptability of the combination is determined by ULI.

Test Report

No. : CE/2006/C5495

Date : 2006/12/29

Page : 1 of 4

FREEPORT RESOURCES ENTERPRISES CORP
6TH INDUSTRIAL AREA WUSHA, CHANGAN TOWN, DONGGUAN CITY,
GUANGDONG CHINA




Report on the submitted sample said to be CONNECTOR.

Style/Item No : PLASTIC (PBT BLACK)
Sample Receiving Date : 2006/12/22
Testing Period : 2006/12/22 TO 2006/12/29

=====
Test Requested : In accordance with the RoHS Directive 2002/95/EC, and its amendment directives.

Test Method : With reference to IEC 62321, Ed.1 111/54/CDV Procedures for the Determination of Levels of Regulated Substances in Electrotechnical Products.
(1) Determination of Cadmium by ICP-AES.
(2) Determination of Lead by ICP-AES.
(3) Determination of Mercury by ICP-AES.
(4) Determination of Hexavalent Chromium for non-metallic samples by UV/Vis Spectrometry.
(5) Determination of PBB and PBDE by GC/MS.

Test Result(s) : Please refer to next page(s).


Daniel Yeh, M.R. / Operation Manager
Signed for and on behalf of
SGS TAIWAN LTD.

Test Report

No. : CE/2006/C5495

Date : 2006/12/29

Page : 2 of 4

FREEPORT RESOURCES ENTERPRISES CORP
6TH INDUSTRIAL AREA WUSHA, CHANGAN TOWN, DONGGUAN CITY,
GUANGDONG CHINA



Test results by chemical method (Unit: mg/kg)

Test Item (s):	Method (Refer to)	Result	MDL
		No.1	
Cadmium (Cd)	(1)	n.d.	2
Lead (Pb)	(2)	16.2	2
Mercury (Hg)	(3)	n.d.	2
Hexavalent Chromium (CrVI) by alkaline extraction	(4)	n.d.	2
Sum of PBBs	(5)	n.d.	-
Monobromobiphenyl		n.d.	5
Dibromobiphenyl		n.d.	5
Tribromobiphenyl		n.d.	5
Tetrabromobiphenyl		n.d.	5
Pentabromobiphenyl		n.d.	5
Hexabromobiphenyl		n.d.	5
Heptabromobiphenyl		n.d.	5
Octabromobiphenyl		n.d.	5
Nonabromobiphenyl		n.d.	5
Decabromobiphenyl		n.d.	5
Sum of PBDEs (Mono to Nona) (Note 4)		n.d.	-
Monobromobiphenyl ether		n.d.	5
Dibromobiphenyl ether		n.d.	5
Tribromobiphenyl ether		n.d.	5
Tetrabromobiphenyl ether		n.d.	5
Pentabromobiphenyl ether		n.d.	5
Hexabromobiphenyl ether		n.d.	5
Heptabromobiphenyl ether		n.d.	5
Octabromobiphenyl ether		n.d.	5
Nonabromobiphenyl ether		n.d.	5
Decabromobiphenyl ether		n.d.	5
Sum of PBDEs (Mono to Deca)		n.d.	-

Test Part Description:

NO.1 : BLACK PLASTIC

Note : 1. mg/kg = ppm

2. n.d. = Not Detected

3. MDL = Method Detection Limit

4. Sum of Mono to NonaBDE & according to 2005/717/EC DecaBDE is exempt.

5. "-" = Not Regulated

Test Report

No. : CE/2006/C5495

Date : 2006/12/29

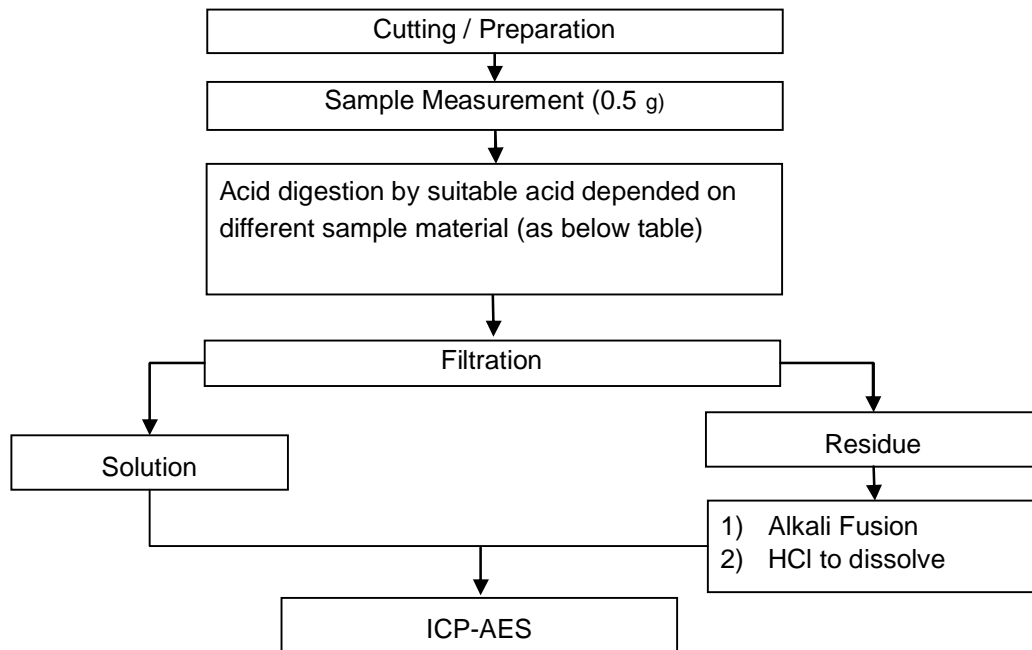
Page : 3 of 4

FREEPORT RESOURCES ENTERPRISES CORP
6TH INDUSTRIAL AREA WUSHA, CHANGAN TOWN, DONGGUAN CITY,
GUANGDONG CHINA



- 1) These samples were dissolved totally by pre-conditioning method according to below flow chart.
- 2) Name of the person who made measurement: Anren Lee
- 3) Name of the person in charge of measurement: Daniel Yeh

Method 1: Flow Chart of Digestion for Cd · Pb analysis



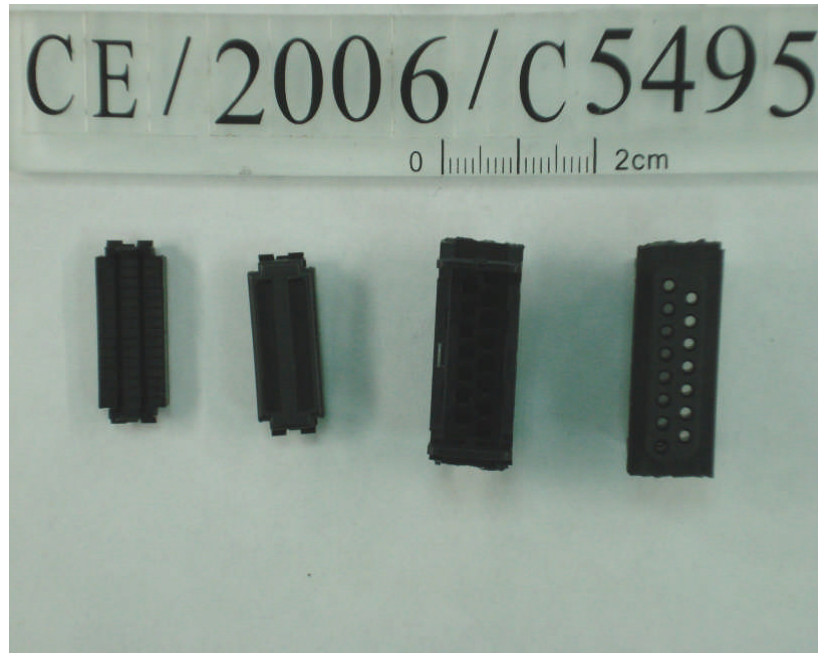
Steel, copper, aluminum, solder	Aqua regia, HNO ₃ , HCl, HF, H ₂ O ₂
Glass	HNO ₃ /HF
Gold, platinum, palladium, ceramic	Aqua regia
Silver	HNO ₃
Plastic	H ₂ SO ₄ , H ₂ O ₂ , HNO ₃ , HCl
Others	Any acid to total digestion

Test Report

No. : CE/2006/C5495 Date : 2006/12/29

Page : 4 of 4

FREEPORT RESOURCES ENTERPRISES CORP
6TH INDUSTRIAL AREA WUSHA, CHANGAN TOWN, DONGGUAN CITY,
GUANGDONG CHINA



** End of Report **

SGS

Certificate HK98/12127

The management system of

Freeport Resources Enterprises Corp.

6th Industrial Area, Wu Sha, Chang An Town
Dongguan City, Guangdong Province, China



has been assessed and certified as meeting the requirements of

ISO 9001:2000

For the following activities

Design and manufacture of connectors and cables

Further clarifications regarding the scope of this certificate and the applicability of ISO 9001:2000 requirements may be obtained by consulting the organization.

This certificate is valid from 16 April 2004 until 16 April 2007
Issue 4. Certified with SGS since January 1998

Authorised by



005

SGS United Kingdom Ltd Systems & Services Certification
Rossmore Business Park Ellesmere Port Cheshire CH65 3EN UK
t +44 (0)151 350-6666 f +44 (0)151 350-6600 www.sgs.com

Page 1 of 1



The management system of

Freeport Resources Enterprises Corp.

6th Industrial Area, Wu Sha, Chang An Town,
Dongguan City, Guangdong Province, China



has been assessed and certified as meeting the requirements of

ISO 14001:2004

For the following activities

**Design and assembly of connectors and cables for activities
confined to the production and office of premises**

This certificate is valid from 09 December 2005 until 18 April 2008
Issue 2. Certified since 18 April 2005

Authorised by

SGS United Kingdom Ltd Systems & Services Certification
Rossmore Business Park Ellesmere Port Cheshire CH65 3EN UK
t +44 (0)151 350-6666 f +44 (0)151 350-6600 www.sgs.com

SGS EMS 04 0105

Page 1 of 1

