

## PERMANENT IDENTIFICATION - PAN-ALUM Aluminium Ties

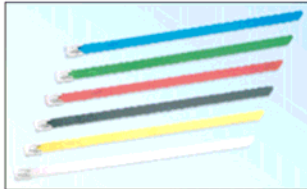
Product Bulletin Number SA-SSCB15 6/2007

### Key Features

### Benefits

<b>Flexible, lightweight material and color options of aluminum marker plates and cable ties</b>	Easy to handle for improved productivity and provides quick visual identification for a wide range of applications
<b>Smooth surfaces and rounded edges</b>	Protects the cable bundle and the installer for improved productivity, job site safety, and reliability
<b>Easy feed cable tie slot</b>	Raised slot provides easy cable tie insertion to speed installation (available on select marker plates)
<b>Patented self-locking cable tie design</b>	Reduces the number of installation steps required to provide lowest installed cost
<b>Smooth cable tie cut-off</b>	Eliminates burrs and sharp edges after installation to protect installer and adjacent bundles

### PAN-ALUM™ Aluminum Cable Ties



- Lightweight, aluminum construction for flexibility and ease of handling
- Five color options in addition to natural aluminum finish for color coding applications
- Smooth surfaces and rounded edges, protects the cable bundle and the installer for improved productivity, job site safety, and reliability
- Patented self-locking head design, reduces installation steps for improved productivity
- For use with PAN-ALUM™ marker plates for fast installation at the lowest installed cost

Part Number	Max. Bundle Diameter		Length		Color	Min. Loop Tensile Strength**		Min. Bundle Diameter		Width		Thickness		Recommended Installation Tool***	Std. Pkg. Qty. <sup>^</sup>																											
	In.	mm	In.	mm		Lbs.	N	In.	mm	In.	mm	In.	mm																													
<b>MLT1H-LPALBU</b>	1.00	25	5.51	140	Blue	50	222	.50	12.7	.31	7.9	.012	.03	ST2MT or HTMT	50																											
<b>MLT2H-LPALBU</b>	2.00	51	7.91	201											50																											
<b>MLT4H-LPALBU</b>	4.00	102	14.25	362											50																											
MLT1H-LPALGR	1.00	25	5.51	140	Green										50	222	.50	12.7	.31	7.9	.012	.03	ST2MT or HTMT	50																		
MLT2H-LPALGR	2.00	51	7.91	201																				50																		
MLT4H-LPALGR	4.00	102	14.25	362																				50																		
<b>MLT1H-LPALRD</b>	1.00	25	5.51	140	Red																			50	222	.50	12.7	.31	7.9	.012	.03	ST2MT or HTMT	50									
<b>MLT2H-LPALRD</b>	2.00	51	7.91	201																													50									
<b>MLT4H-LPALRD</b>	4.00	102	14.25	362																													50									
MLT1H-LPALBL	1.00	25	5.51	140	Black																												50	222	.50	12.7	.31	7.9	.012	.03	ST2MT or HTMT	50
MLT2H-LPALBL	2.00	51	7.91	201																																						50
MLT4H-LPALBL	4.00	102	14.25	362																																						50
MLT1H-LPALYL	1.00	25	5.51	140	Yellow	50	222	.50	12.7	.31	7.9	.012	.03	ST2MT or HTMT																												50
MLT2H-LPALYL	2.00	51	7.91	201																																						50
MLT4H-LPALYL	4.00	102	14.25	362																																						50
<b>MLT1H-LPAL</b>	1.00	25	5.51	140	Aluminum										50	222	.50	12.7	.31	7.9	.012	.03	ST2MT or HTMT																			50
<b>MLT2H-LPAL</b>	2.00	51	7.91	201																																						50
<b>MLT4H-LPAL</b>	4.00	102	14.25	362																																						50

\*\*Per SAE Standard AS23190/3 (formerly MIL).

Temperature rating -80C to +100C

Good UV light resistance