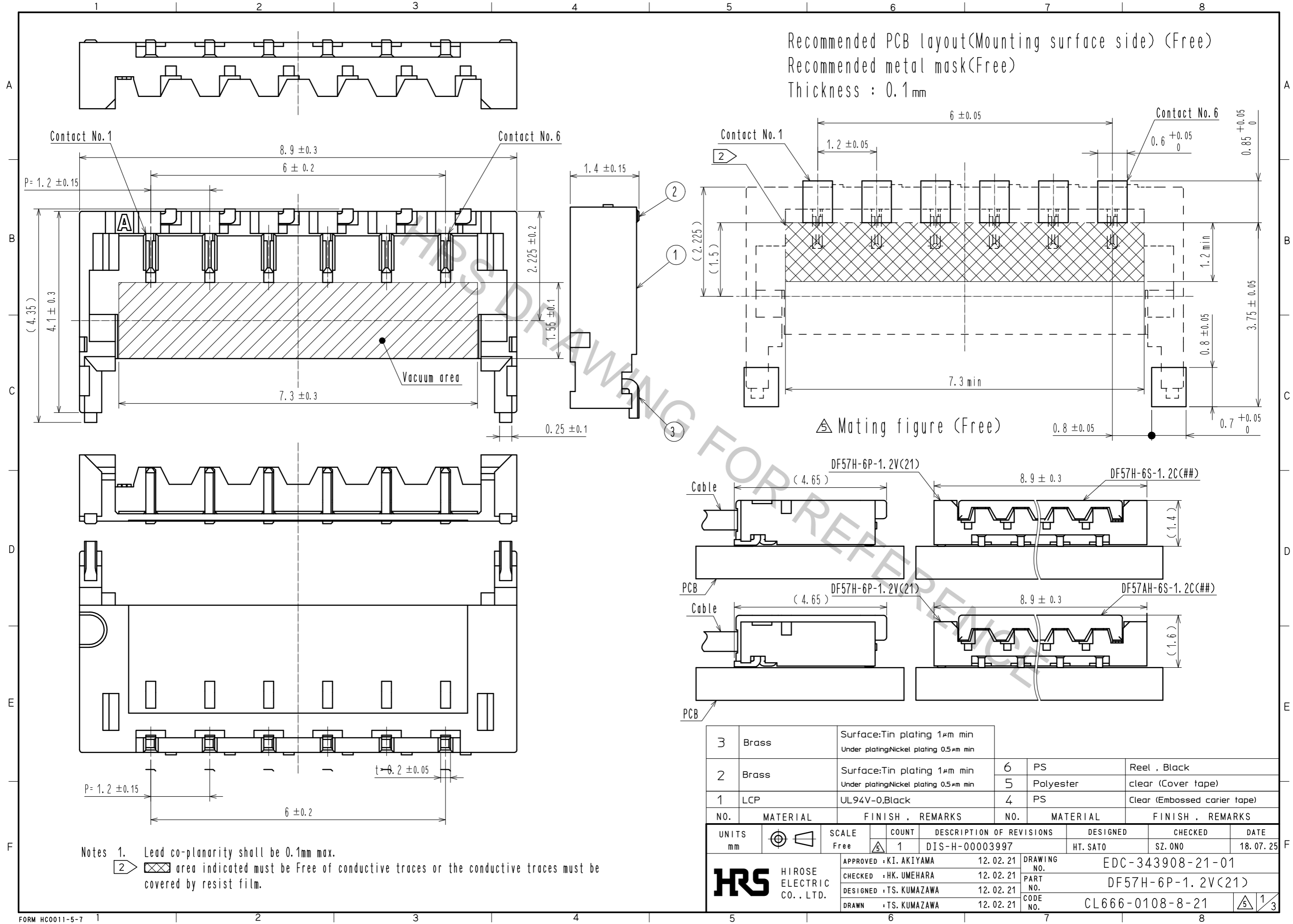
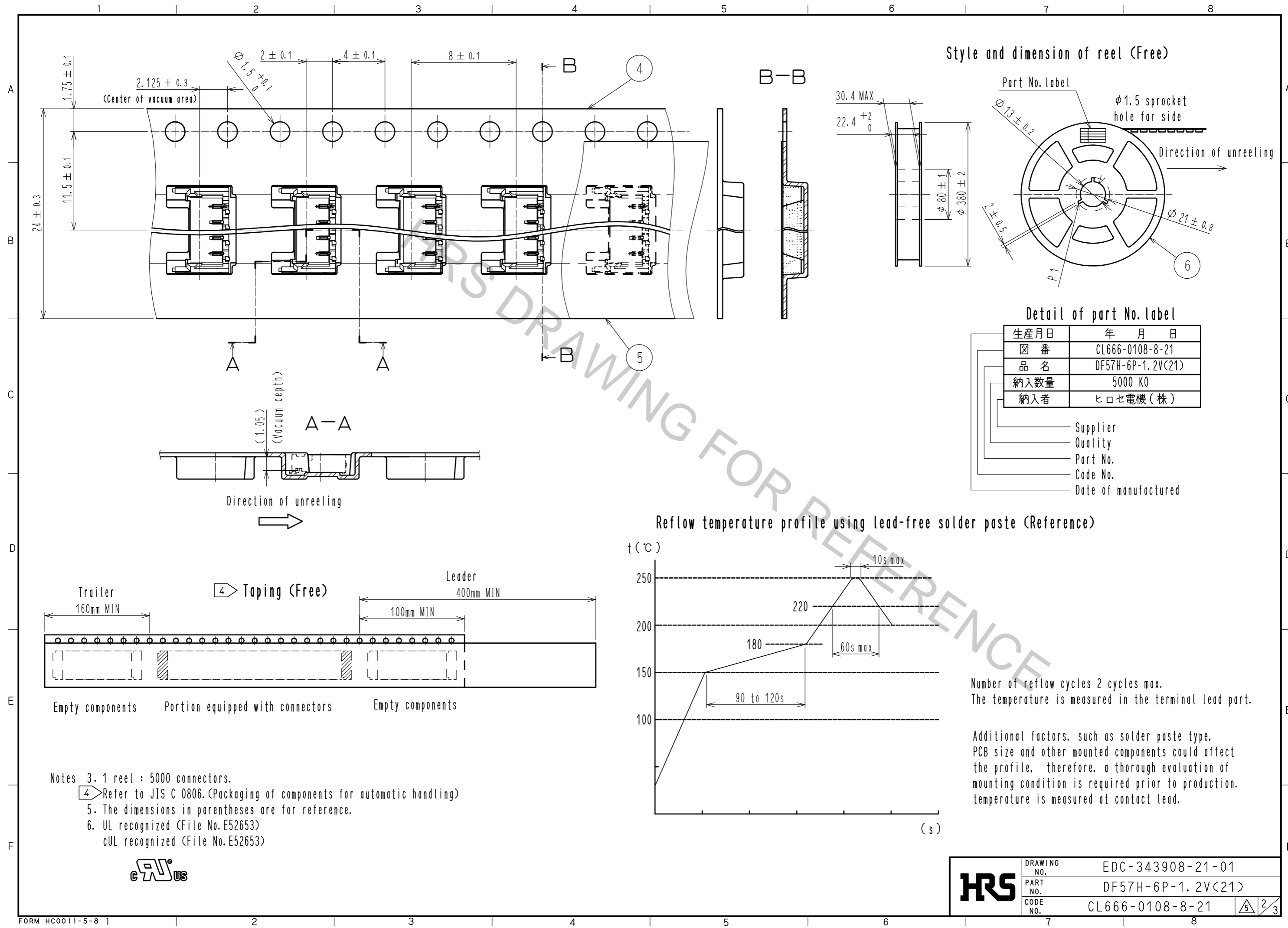


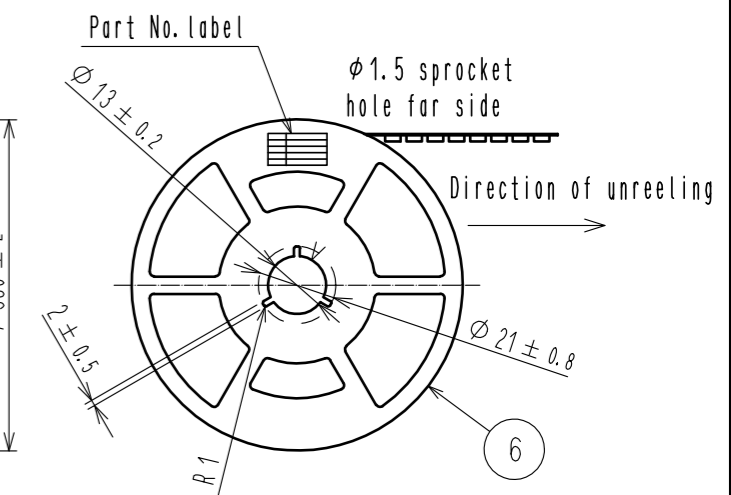
Oct.1.2018 Copyright 2018 HIROSE ELECTRIC CO., LTD. All Rights Reserved.  
 In case that the application demands a high level of reliability, such as automotive,  
 please contact a company representative for further information.



Oct.1.2018 Copyright 2018 HIROSE ELECTRIC CO., LTD. All Rights Reserved.  
 In case that the application demands a high level of reliability, such as automotive,  
 please contact a company representative for further information.



Style and dimension of reel (Free)

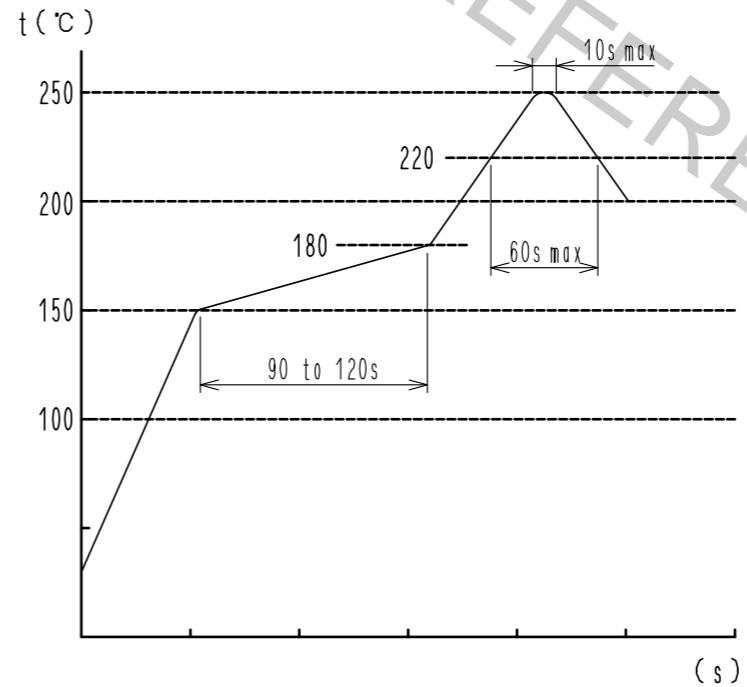


Detail of part No. label

生産月日	年 月 日
図 番	CL666-0108-8-21
品 名	DF57H-6P-1.2V(C21)
納入数量	5000 KO
納入者	ヒロセ電機(株)

- Supplier
- Quality
- Part No.
- Code No.
- Date of manufactured

Reflow temperature profile using lead-free solder paste (Reference)



Number of reflow cycles 2 cycles max.  
 The temperature is measured in the terminal lead part.

Additional factors, such as solder paste type,  
 PCB size and other mounted components could affect  
 the profile, therefore, a thorough evaluation of  
 mounting condition is required prior to production.  
 temperature is measured at contact lead.

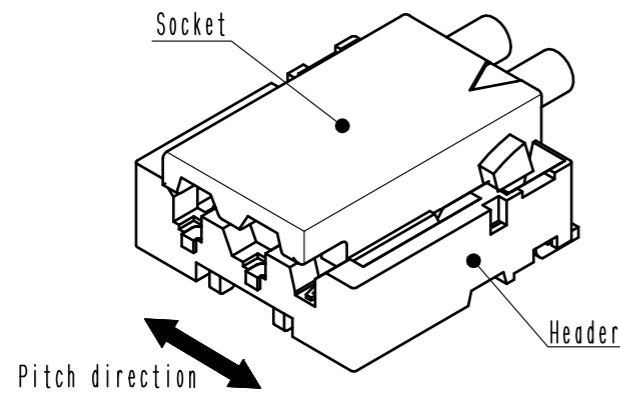
- Notes
3. 1 reel : 5000 connectors.
  4. Refer to JIS C 0806. (Packaging of components for automatic handling)
  5. The dimensions in parentheses are for reference.
  6. UL recognized (File No. E52653)  
 cUL recognized (File No. E52653)



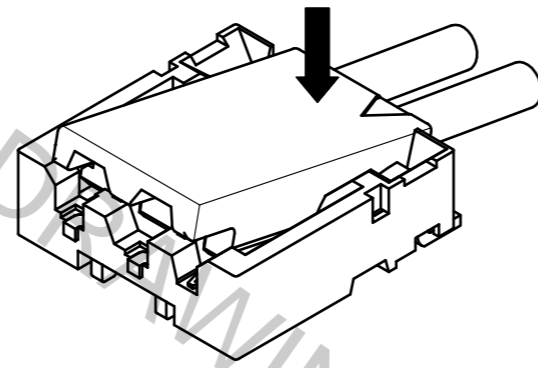
<b>HRS</b>	DRAWING NO.	EDC-343908-21-01
	PART NO.	DF57H-6P-1.2V(C21)
	CODE NO.	CL666-0108-8-21
		2/3

Oct.1.2018 Copyright 2018 HIROSE ELECTRIC CO., LTD. All Rights Reserved.  
In case that the application demands a high level of reliability, such as automotive,  
please contact a company representative for further information.

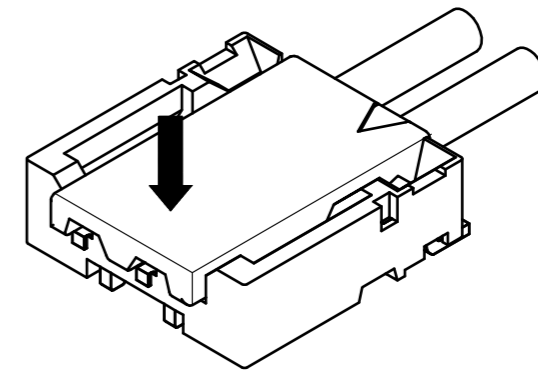
①By positioning the convexity of the socket sides to the header concavity, align the centers of the socket and the header in pitch direction.



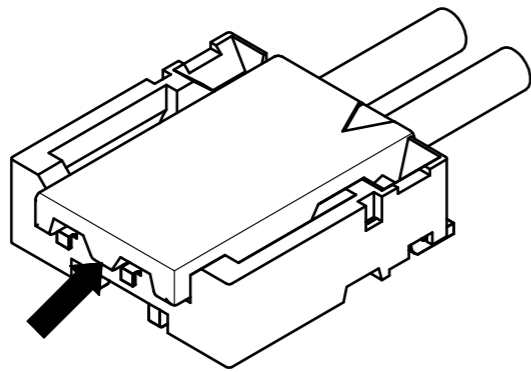
②Slightly press the socket down at cable side to tilted angle.



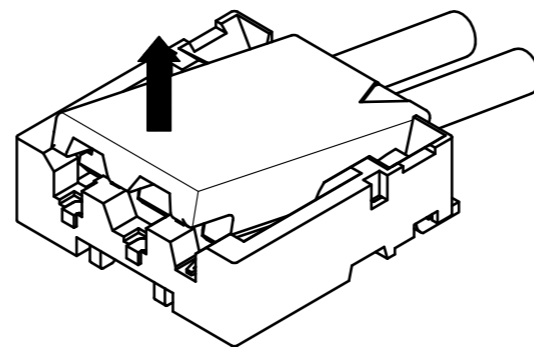
③Press down at the lever side with stabilizing the cable side to insert. Mating completes.



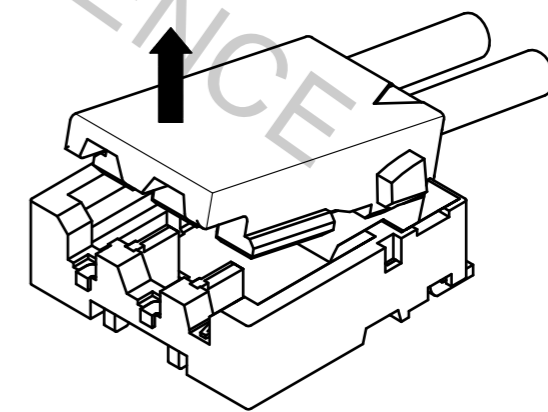
①Hook the lever with finger nail.



②Lift up to the upper direction and friction lock is released.



③Lift up to the upper direction and positive lock is released. Removal completes.



**HRS**

DRAWING NO.	EDC-343908-21-01
PART NO.	DF57H-6P-1.2V(21)
CODE NO.	CL666-0108-8-21

3/3