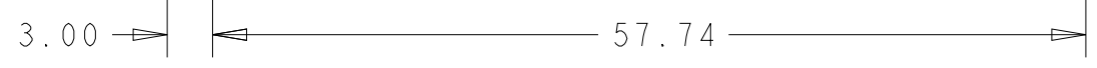
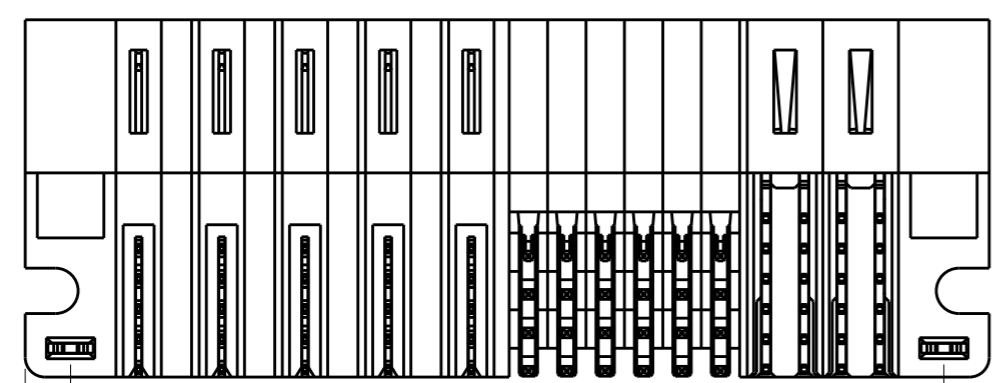
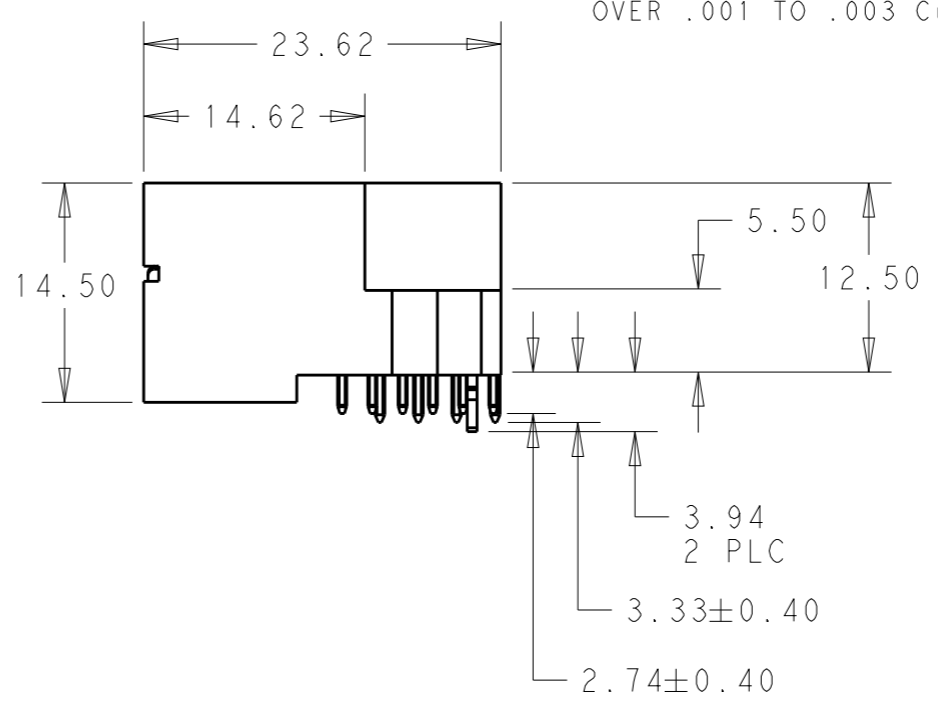
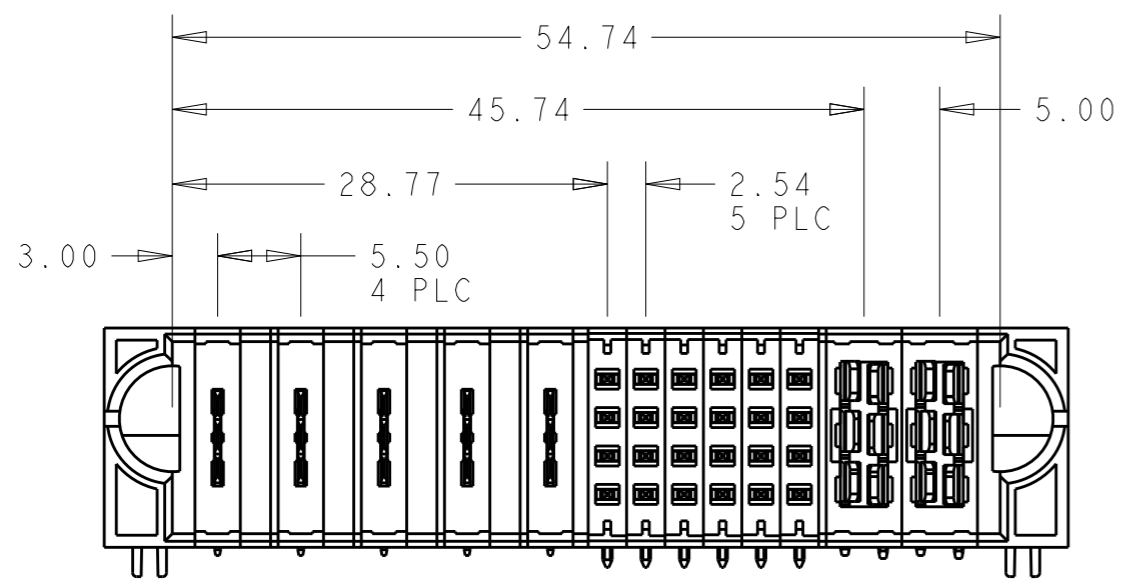
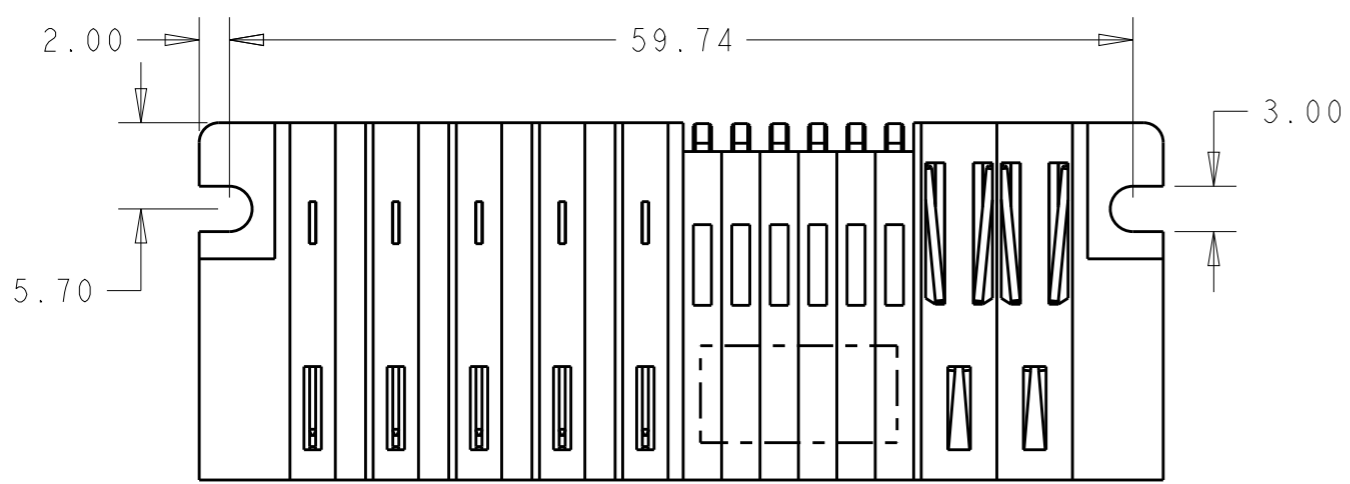


THIS DRAWING IS UNPUBLISHED. RELEASED FOR PUBLICATION 20
 © COPYRIGHT 20 BY - ALL RIGHTS RESERVED.

REVISIONS					
P	LTR	DESCRIPTION	DATE	DWN	APVD
1		PROPOSAL DESIGN	03AUG2018	WY	SZ



- 1 "TE", PART NUMBER, AND DATECODE TO BE MARKED IN AREA SHOWN. PARTS UNDER 2.00 LONG MAY BE MARKED ON BOTH SIDES.
- 2 MATERIAL:
 HOUSING - GLASS FILLED HIGH TEMP THERMO PLASTIC, BLACK, UL94 V-O
 SIGNAL CONTACT - COPPER ALLOY
 POWER CONTACT - HIGH CONDUCTIVITY COPPER ALLOY
- 3 CONTACT PLATING: NOBLE METAL PLATING ON CONTACT FUNCTIONAL AREA OF POWER AND SIGNAL CONTACTS.
- 4 MECHANICAL CONNECTOR KEEP OUT ZONE.
- 5 DATUM AND BASIC DIMENSIONS ESTABLISHED BY CUSTOMER.
- 6 PCB - HOLE DIAMETERS ARE FINISHED HOLE SIZE.
- 7 PCB - .0453±.0010 DRILLED HOLES PLATED WITH .0003 MIN Sn OVER .001 TO .003 Cu PLATING TO ACHIEVE A .040 ±.003 HOLE.

5LP + 24S + 2P	2334530-4
DESCRIPTION	PART NUMBER

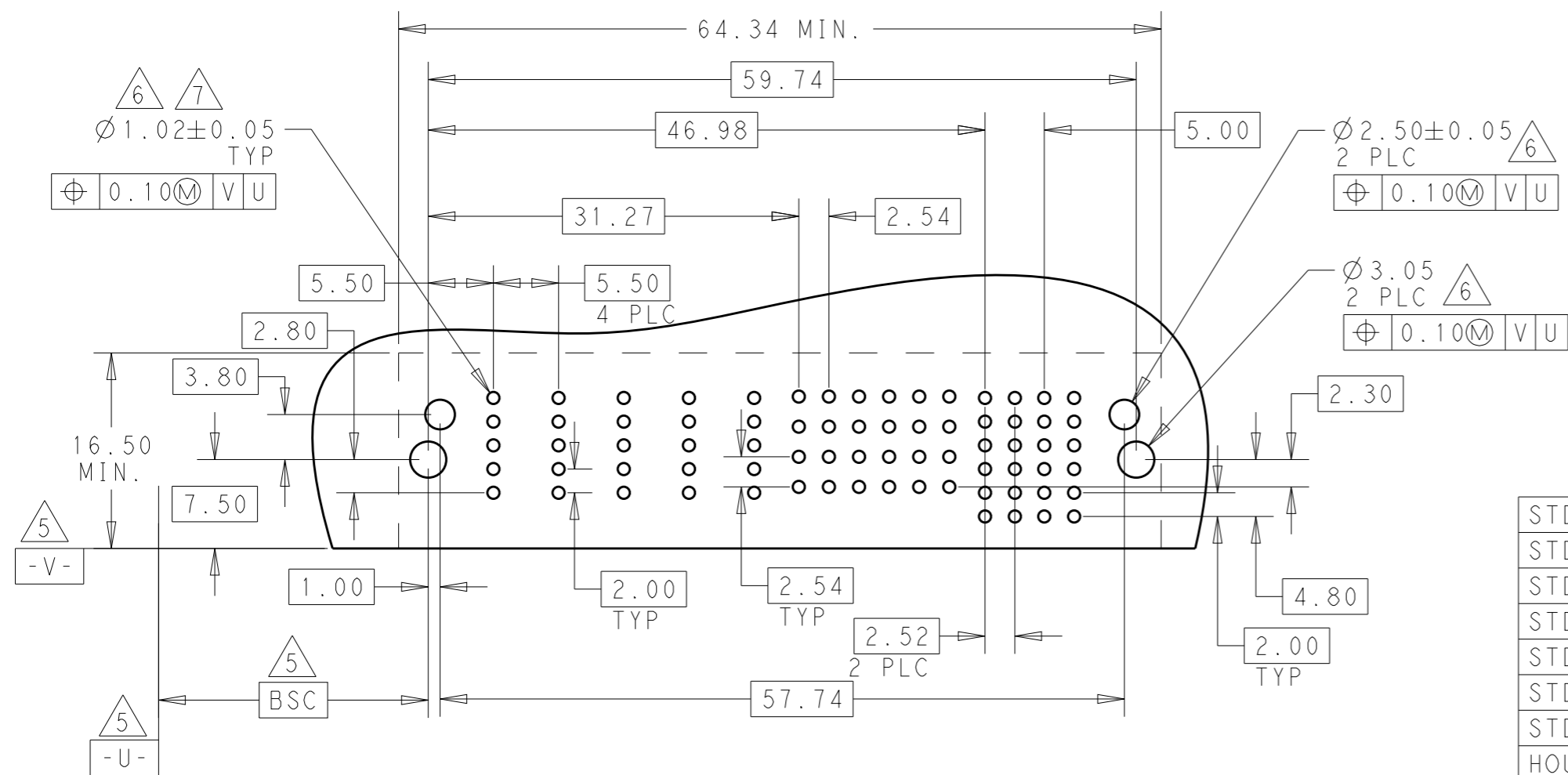
THIS DRAWING IS A CONTROLLED DOCUMENT.		DWN	03AUG2018	STE TE Connectivity
		CHK	03AUG2018	
		APVD	03AUG2018	
		APVD	SZ	
DIMENSIONS: mm		TOLERANCES UNLESS OTHERWISE SPECIFIED:		NAME
		0 PLC ±-		RIGHT ANGLE HEADER, SOLDER MULTI-BEAM PLUS
		1 PLC ±-		
		2 PLC ±0.25		
		3 PLC ±0.15		
		4 PLC ANGLES ±-		
MATERIAL		FINISH		SIZE
- 2		- 3		A300779
		CUSTOMER DRAWING		CAGE CODE
				2334530-4
				DRAWING NO
				2334530-4
				RESTRICTED TO
				-
				SCALE
				1:1
				SHEET
				1 OF 2
				REV
				1

THIS DRAWING IS UNPUBLISHED. RELEASED FOR PUBLICATION 20
 © COPYRIGHT 20 BY - ALL RIGHTS RESERVED.

REVISIONS				
P	LTR	DESCRIPTION	DATE	APVD
		SEE SHEET 1		

PART NUMBER	ROWS	LOW POWER					SIGNLA						POWER			
		LP1	LP2	LP3	LP4	LP5	1	2	3	4	5	6	P1	P2		
2334530-4	D	LM	LM	LM	LM	LM	P4	P4	P4	P4	P4	P4	TM	TN	TM	TN
	C						P3	P3	P3	P3	P4	P3				
	B						P2	P2	P2	P2	P2	P2				
	A						P1	P1	P1	P1	P1	P1				

5LP+24S+2P



STD SOLDER TYPE SIGNAL CONTACT, ROW D	P4
STD SOLDER TYPE SIGNAL CONTACT, ROW C	P3
STD SOLDER TYPE SIGNAL CONTACT, ROW B	P2
STD SOLDER TYPE SIGNAL CONTACT, ROW A	P1
STD LOWER POWER CONTACT	LM
STD SOLDER POWER CONTACT, RIGHT	TN
STD SOLDER POWER CONTACT, LEFT	TM
HOUSING	HOUSING
HOLD DOWN, MULTI-BEAM	HD
DESCRIPTION	IDENTIFIER

RECOMMENDED PCB LAYOUT

THIS DRAWING IS A CONTROLLED DOCUMENT.

DIMENSIONS:	TOLERANCES UNLESS OTHERWISE SPECIFIED:
mm	0 PLC ±-
	1 PLC ±-
	2 PLC ±0.25
	3 PLC ±0.15
	4 PLC ±-
	ANGLES ±-

MATERIAL:

FINISH:

DWN WY	03AUG2018
CHK WY	03AUG2018
APVD SZ	03AUG2018
PRODUCT SPEC	-
APPLICATION SPEC	-
WEIGHT	-
CUSTOMER DRAWING	

STE TE Connectivity

NAME: RIGHT ANGLE HEADER, SOLDER MULTI-BEAM PLUS

SIZE	CAGE CODE	DRAWING NO	RESTRICTED TO
A3	00779	2334530-4	-

SCALE: 1:1 SHEET 2 OF 2 REV 1