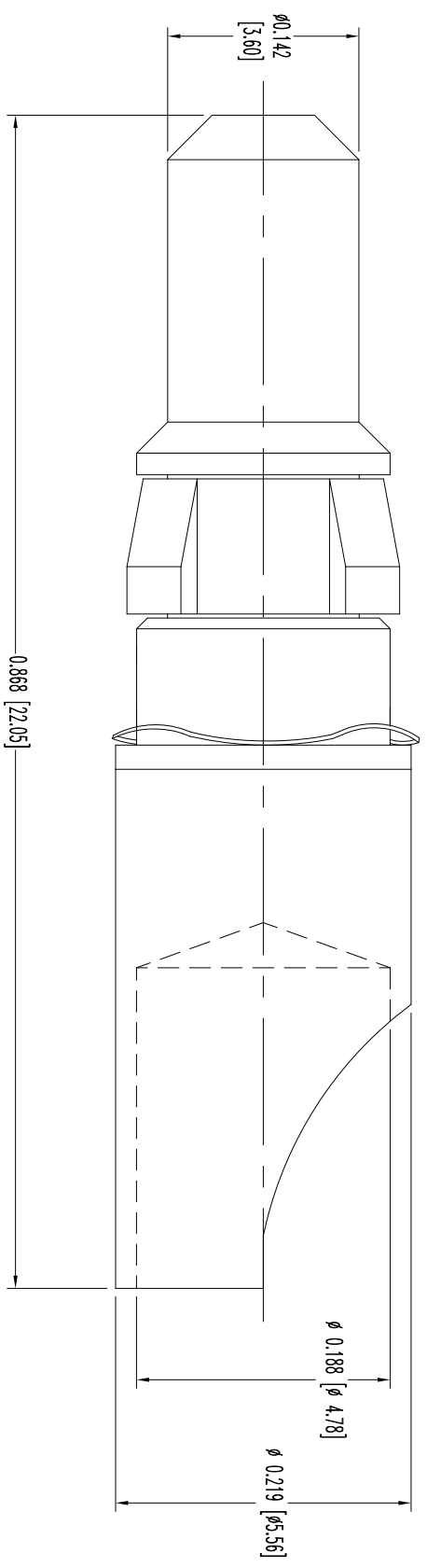


THIS DRAWING CONTAINS INFORMATION PROPRIETARY TO POSITRONIC INDUSTRIES INC. THE DATA ON THIS DRAWING TO BE RELIABLE. SINCE THE USER EMPLOY'S SUCH INFORMATION AT HIS OWN DISCRETION, POSITRONIC INDUSTRIES INC. ACCEPTS NO LIABILITY FOR RESULTS OBTAINED OR DAMAGES INCURRED FROM USE OF SUCH INFORMATION IN WHOLE OR IN PART.



NOTES:

1. MATERIAL AND FINISH:
CONTACT: PRECISION MACHINED COPPER ALLOY, GOLD FLASH OVER NICKEL.
SPRING WASHER: BERYLLIUM COPPER, GOLD FLASH OVER NICKEL PLATE.
RETENTION RING: POLYETHERIMIDE, COLOR BLACK.
2. DETAILED PRODUCT, ELECTRICAL, AND MECHANICAL INFORMATION IS AVAILABLE IN THE LATEST STANDARD DENSITY COMBO-D PRODUCT PUBLICATION.
VISIT CONNECTPOSTRONIC.COM/PRODUCTS/1/STANDARDENSITYCOMBO-D OR CONNECTPOSTRONIC.COM.
3. CONTACTS ARE ROHS COMPLIANT PER ROHS DIRECTIVE 2002/95/EC OF 27 JAN 2003.
4. DIMENSIONS ARE IN INCHES [MILLIMETERS].

DATE	REV	REVISION RECORD	APP	DR	CK
12-15-05	NC	ECO 25192	TK	ME	TK
3-29-10	A	ECO 32302	TK	BE	TK
11-9-14	B	ECO 34707	COLB	BE	COLB
9-14-16	C	ECO 52581	COLB	AC	COLB

SK6820

POSITRONIC INDUSTRIES INC.
www.connectpositronic.com

ANGULAR TOL. ± 5°	DECIMAL TOL. ± 0.015 [0.38]	CBD SERIES	SCALE N.T.S.	DRAWN BY M. ENEA	DATE 12-15-05	DRAWING NUMBER SK6820	REV. C
		TITLE MS4008D/AA		APPROVED BY T. KEPLER			
				FSCM 28198			