



PZ SERIES DC GEARMOTORS: Parallel Shaft

Speed Range RPM	F.L. Torque (lb.in.)	Input HP	LEESON Catalog No.	Cross Reference			
				Dayton	Bodine	Baldor	Bison
4-0.06	40	1/40	M1115002	6Z911	199	—	507-01-151 507-01-135
4-0.06	40	1/40	M1125046	—	—	—	—
10-0.17	100	1/20	M1115001	6Z912	198	GPP231108	507-01-134 507-01-149
10-0.17	100	1/20	M1125047	—	—	—	—
20-0.33	100	1/20	M1115000	6Z913	196	GPP232110	507-01-147
20-0.33	100	1/20	M1125048	—	—	GPP233120	—
30-0.50	100	1/17	M1125002	6Z914	190	GPP233112	507-01-132
30-0.50	100	1/17	M1125037	—	—	—	—
60-1.0	56	1/17	M1125003	6Z914	—	GPP233111	507-01-130
60-1.0	56	1/17	M1125036	—	—	—	—
100-1.7	36	1/17	M1125004	—	189	GPP12503	507-01-129 507-01-142
100-1.7	36	1/17	M1125035	—	—	—	—
150-2.5	24	1/17	M1125005	6Z916	188	—	507-01-129
150-2.5	24	1/17	M1125034	—	—	—	—
300-5.0	10	1/17	M1125006	—	157	—	507-01-127
300-5.0	10	1/17	M1125033	—	—	—	—

RIGHT-ANGLE DC GEARMOTORS

Speed Range RPM	F.L. Torque (lb.in.)	Input HP	LEESON Catalog No.	Cross Reference			
				Dayton	Bodine	Baldor	Bison
42-0.7	55	1/17	M1115018	4Z727	099	GP233006	507-02-139~
62-1.0	43	1/17	M1115019	—	098	GP233003	507-02-138~
125-2.1	26	1/17	M1115020	—	096	GP233007	507-02-129~
250-4.0	14	1/17	M1115021	—	094	—	507-02-128~
500-8.0	7	1/17	M1115022	—	093	—	—
42-0.7	96	1/8	M1135069	6A192	—	GP7403	507-02-125
62-1.0	77	1/8	M1135038	4Z137	4144 4544	GP7402	507-02-126
125-2.1	47	1/8	M1135039	—	4142 4542	—	507-02-002
250-4.0	26	1/8	M1135040	—	4141	—	—
500-8.0	14	1/8	M1135041	—	4140	—	—
62-1.0	154	1/4	M1135042	1L498	4138	GP7405*	507-02-209
83-1.4	126	1/4	M1135043	1L499	4137	GP7407*	507-02-208
125-2.1	94	1/4	M1135044	—	4136	GP7406*	507-02-207
250-4.0	52	1/4	M1135045	—	4135 4535	GP7433*	—
500-8.0	28	1/4	M1135046	—	4134	—	—

*Mounting base and output shaft height are not 'drop-in' replacement.

P300 SERIES DC GEARMOTORS: Parallel Shaft

Speed Range RPM	F.L. Torque (lb.in.)	Input HP	LEESON Catalog No.	Cross Reference			
				Dayton	Bodine	Baldor	Bison
5-0.1	353	1/20	M1115024	6A193	4147	—	507-01-105
12-0.20	223	1/20	M1115025	6A194	4146	GPP233141	507-01-104
20-0.33	137	1/20	M1115026	4Z134	—	GPP233140	507-01-103
24-0.4	280	1/8	M1125069	4Z130	4156	—	507-01-110
30-0.50	235	1/8	M1125070	4Z383	4155	GPP12547	507-01-109
34-0.57	82	1/20	M1115027	4Z133	—	GPP233112	507-01-102
50-0.83	151	1/8	M1125071	4Z129	4154	—	507-01-103
60-1.00	47	1/20	M1115028	4Z132	—	GPP233111	507-01-101
61-1.0	113	1/8	M1125072	4Z382	4154	GPP12545	507-01-108
94-1.60	77	1/8	M1125073	4Z381	4153	GPP12544	—
109-1.80	26	1/20	M1115029	4Z131	—	—	507-01-100
70-2.80	47	1/8	M1125024	4Z128	4151	GPP12542	507-01-106

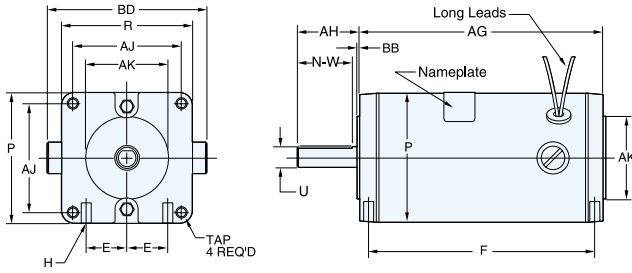
PE350 SERIES DC GEARMOTORS: Parallel Shaft

Output RPM	F.L. Torque (lb.in.)	Input HP	LEESON Catalog No.	Cross Reference		
				Baldor	Bodine	Bison
7	310	1/8	M1135106	GPP7459	4175	507-01-365
14	330	1/8	M1135107	GPP7462	4174	—
21	315	1/4	M1135117	GPP7457	4173	507-01-364
27	305	1/4	M1135115	GPP7461	—	—
42	280	1/4	M1135108	GPP7456	4185	501-01-362
50	250	1/4	M1135109	GPP7450	—	507-01-361
62	220	1/4	M1135110	GPP7455	4184	507-01-360
83	155	1/4	M1135114	GPP7454	4183	—
125	100	1/4	M1135111	GPP7453	4182	—
165	70	1/4	M1135112	GPP7452	4181	—
250	45	1/4	M1135116	GPP7451	4180	—
500	25	1/4	M1135113	GPP7450	4179	—

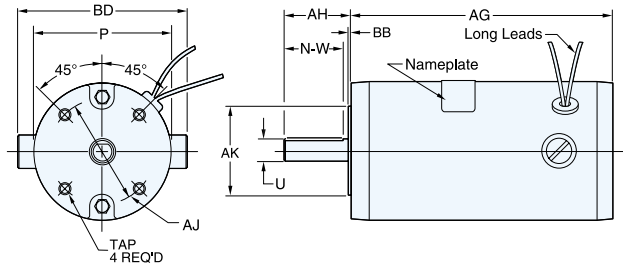
P1100 SERIES DC GEARMOTORS: Parallel Shaft

Output RPM	F.L. Torque (lb.in.)	Ratio to 1	Input HP	LEESON Catalog No.	Cross Reference	
					Dayton	Bison
8	1087	212	1/4	108700	6Z406	507-01-212
12	1030	143	1/4	108701	6Z407	507-01-213
18	750	95	1/4	108702	6Z408	507-01-214
42	353	42	1/4	108703	6Z409	507-01-215
60	238	29	1/4	108704	6Z410	507-01-216
92	160	19	1/4	108705	6Z411	507-01-217
135	105	13	1/4	108706	6Z412	507-01-218
18	1112	95	1/2	108707*	6Z413	507-01-226
33	882	53	1/2	108708*	6Z414	507-01-227
42	705	42	1/2	108709*	6Z415	507-01-228
60	476	29	1/2	108710*	6Z416	507-01-229
92	320	19	1/2	108711*	6Z417	507-01-230
135	210	13	1/2	108712*	6Z418	507-01-231

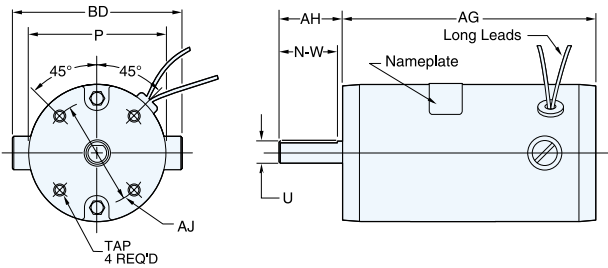
A DC SQUARE FLANGE MOUNT



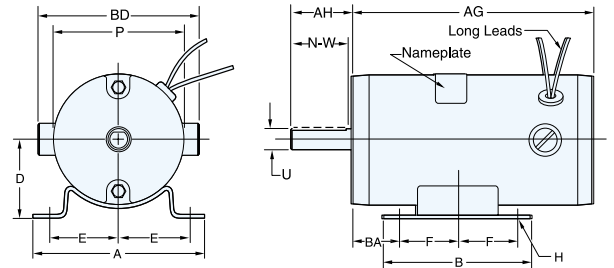
B DC FLANGE MOUNT



C DC FACE MOUNT



D DC BASE MOUNT



LEESON CUSTOM DC MOTORS - SQUARE FLANGE (Inches)

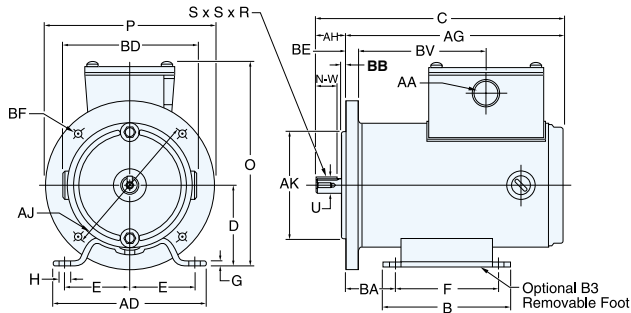
Frame & Type	AG	P	BD	U	AH	N-W	AJ	TAP	R	AK	BB	D	BA	E	F	H	
24	A	3.93	2.38	2.88	.375	1.50	1.00	1.73	8-32	2.47	1.00	.03	1.23	.125	.625	3.70	8-32
	B	4.43	2.38	2.88	.375	1.50	1.00	1.73	8-32	2.47	1.00	.03	1.23	.125	.625	4.20	8-32
	C	4.93	2.38	2.88	.375	1.50	1.00	1.73	8-32	2.47	1.00	.03	1.23	.125	.625	4.70	8-32
	D	5.43	2.38	2.88	.375	1.50	1.00	1.73	8-32	2.47	1.00	.03	1.23	.125	.625	5.20	8-32
	E	5.93	2.38	2.95	.375	1.50	1.00	1.73	8-32	2.47	1.00	.03	1.23	.125	.625	5.70	8-32
31	A	4.88	3.11	3.50	.500	1.50	1.00	2.63	1/4-20	3.16	2.00	.07	1.57	.235	1.000	4.40	1/4-20
	B	5.38	3.11	3.50	.500	1.50	1.00	2.63	1/4-20	3.16	2.00	.07	1.57	.235	1.000	4.90	1/4-20
	C	5.88	3.11	3.50	.500	1.50	1.00	2.63	1/4-20	3.16	2.00	.07	1.57	.235	1.000	5.40	1/4-20
	D	6.38	3.11	3.50	.500	1.50	1.00	2.63	1/4-20	3.16	2.00	.07	1.57	.235	1.000	5.90	1/4-20
	E	6.88	3.11	3.50	.500	1.50	1.00	2.63	1/4-20	3.16	2.00	.07	1.57	.235	1.000	6.40	1/4-20
	F	7.38	3.11	3.50	.500	1.50	1.00	2.63	1/4-20	3.16	2.00	.07	1.57	.235	1.000	6.90	1/4-20
	G	7.88	3.11	3.50	.500	1.50	1.00	2.63	1/4-20	3.16	2.00	.07	1.57	.235	1.000	7.40	1/4-20

LEESON CUSTOM DC MOTORS - FLANGE, FACE, AND BASE MOUNT (Inches)

Frame & Type	AG	P	BD	U	AH	N-W	AJ	TAP	AK	BB	D	BA	A	B	E	F	H	
24	A	3.84	2.38	2.88	.375	1.50	1.00	1.79	8-32	1.00	.12	—	—	—	—	—	—	
	B	4.34	2.38	2.88	.375	1.50	1.00	1.79	8-32	1.00	.12	—	—	—	—	—	—	
	C	4.84	2.38	2.88	.375	1.50	1.00	1.79	8-32	1.00	.12	—	—	—	—	—	—	
	D	5.34	2.38	2.88	.375	1.50	1.00	1.79	8-32	1.00	.12	—	—	—	—	—	—	
	E	5.84	2.38	2.88	.375	1.50	1.00	1.79	8-32	1.00	.12	—	—	—	—	—	—	
31	A	4.83	3.11	3.56	.500	1.50	1.00	2.63	8-32	2.00	.12	1.63	.75	3.50	3.13	1.40	1.25	.22x.31
	B	5.33	3.11	3.56	.500	1.50	1.00	2.63	8-32	2.00	.12	1.63	.75	3.50	3.13	1.40	1.25	.22x.31
	C	5.83	3.11	3.56	.500	1.50	1.00	2.63	8-32	2.00	.12	1.63	.75	3.50	3.13	1.40	1.25	.22x.31
	D	6.33	3.11	3.56	.500	1.50	1.00	2.63	8-32	2.00	.12	1.63	.75	3.50	3.13	1.40	1.25	.22x.31
	E	6.83	3.11	3.56	.500	1.50	1.00	2.63	8-32	2.00	.12	1.63	.75	3.50	3.13	1.40	1.25	.22x.31
	F	7.33	3.11	3.56	.500	1.50	1.00	2.63	8-32	2.00	.12	1.63	.75	3.50	3.13	1.40	1.25	.22x.31
	G	7.83	3.11	3.56	.500	1.50	1.00	2.63	8-32	2.00	.12	1.63	.75	3.50	3.13	1.40	1.25	.22x.31
34	A	4.83	3.38	4.00	.500	1.50	1.00	2.63	8-32	2.00	.12	1.88	.75	4.19	3.56	1.688	1.406	.25 dia.
	B	5.33	3.38	4.00	.500	1.50	1.00	2.63	8-32	2.00	.12	1.88	.75	4.19	3.56	1.688	1.406	.25 dia.
	C	5.83	3.38	4.00	.500	1.50	1.00	2.63	8-32	2.00	.12	1.88	.75	4.19	3.56	1.688	1.406	.25 dia.
	D	6.33	3.38	4.00	.500	1.50	1.00	2.63	8-32	2.00	.12	1.88	.75	4.19	3.56	1.688	1.406	.25 dia.
	E	6.83	3.38	4.00	.500	1.50	1.00	2.63	8-32	2.00	.12	1.88	.75	4.19	3.56	1.688	1.406	.25 dia.
	F	7.33	3.38	4.00	.500	1.50	1.00	2.63	8-32	2.00	.12	1.88	.75	4.19	3.56	1.688	1.406	.25 dia.
	G	7.83	3.38	4.00	.500	1.50	1.00	2.63	8-32	2.00	.12	1.88	.75	4.19	3.56	1.688	1.406	.25 dia.

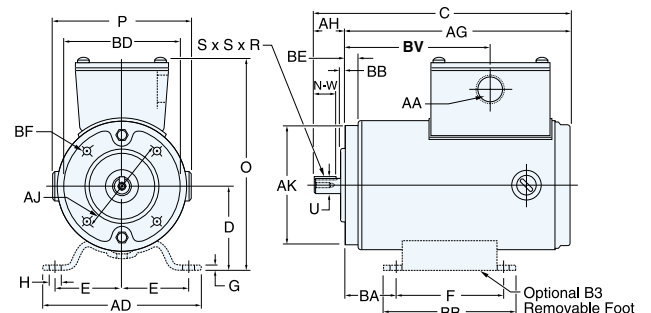
E

METRIC FRAMES – 56/63 B5



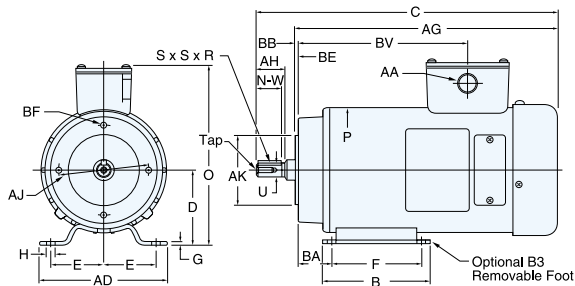
F

METRIC FRAMES – 56/63 B14



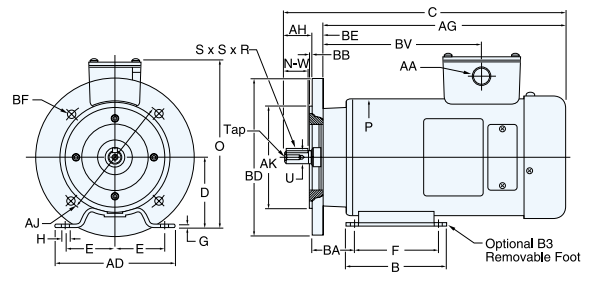
G

METRIC FRAMES – 71/80/90 B3



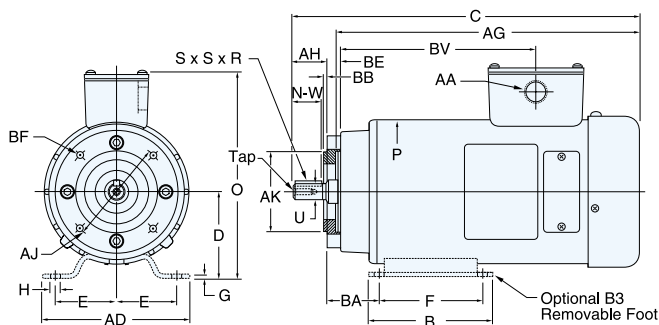
H

METRIC FRAMES – 71/80/90 B5



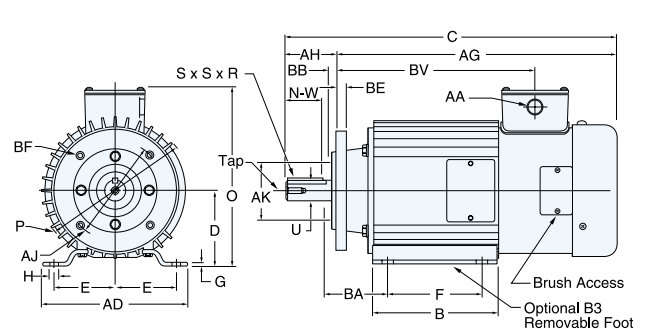
I

METRIC FRAMES – 71/80/90 B14



J

METRIC FRAMES – 100 B14



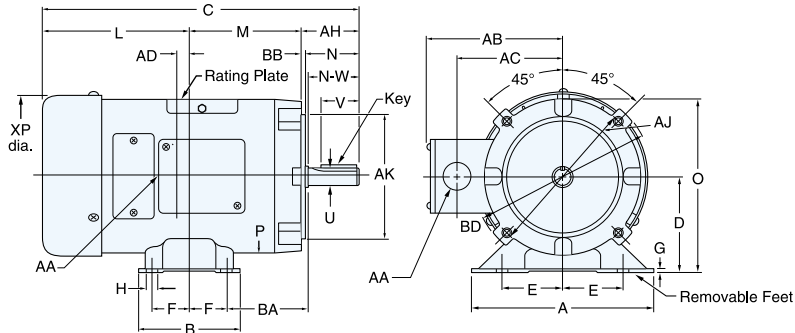
METRIC (IEC) FRAMES (Millimeters)

IEC Frame	Mounting					Shaft							B14 Face*/B5 Flange**						General									
	2E	AD	F	B	BA	D	G	H	U	AH	N-W	S	R	TAP	AJ *	AK **	BD *	BF **	BB *	P	O	BE	AA					
56	90	106	71	90	36	56	3	6	9	20	16	3	15	M3	65	100	50	80	80	120	M5	7	2.5	2.5	96	139	9	11.0
63	100	116	80	96	40	63	3	7	11	23	19	4	18	M4	75	115	60	95	90	140	M5	9	2.5	3.0	96	146	9	11.0
71	112	128	90	106	45	71	3	7	14	30	26	5	25	M5	85	130	70	110	105	160	M6	9	2.5	3.5	124	179	12	13.5
80	125	156	100	127	50	80	3	10	19	40	33	6	32	M6	100	165	80	130	120	200	M6	12	3.0	3.5	143	204	12	16.0
90S	140	174	100	152	56	90	3	10	24	50	36	8	35	M8	115	165	95	130	140	200	M8	12	3.0	3.5	166	233	12	16.0
90L	140	174	125	152	56	90	3	10	24	50	36	8	35	M8	115	165	95	130	140	200	M8	12	3.0	3.5	166	233	12	16.0
100L	160	196	140	170	63	100	3	12	28	60	41	8	40	M10	130	215	110	180	160	250	M8	15	3.5	3.5	193	243	12	16.0

For C dimension, see motor selection charts.
One inch = 25.4mm

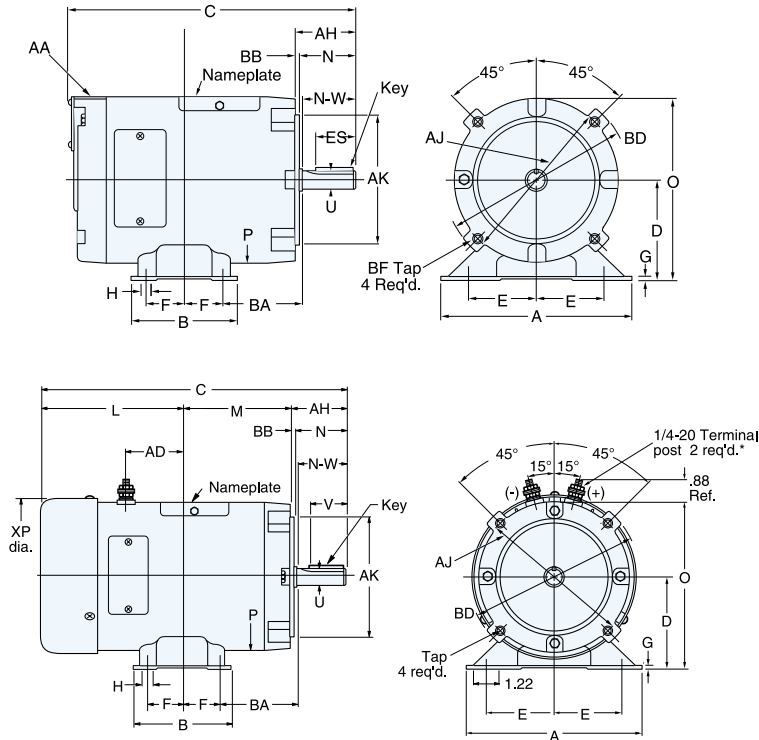
K

NEMA FRAMES, SCR RATED



L

NEMA FRAMES, LOW VOLTAGE



ALL DIMENSIONS IN INCHES

NEMA FRAMES (Inches)

NEMA Frame	Mounting Foot								Shaft			Mounting Face				General			
	2E	A	2F	B	BA	D	G	H	U	AH	V	AK	AJ	BD	TAP	BB	P	O	AA
42	3.5	4.75	1.69	2.45	2.06	2.625	.12	.38	.375	1.313	1.0	3.0	3.75	4.875	1/4-20	.125	4.875	5.06	3.75
48	4.25	5.75	2.75	3.5	2.5	3.0	.12	.34	.50	1.69	1.375	3.0	3.75	5.00	1/4-20	.125	5.59	5.81	.50
SS56	4.875	6.5	3.0	4.0	2.75	3.5	.12	.34	.625	2.06	1.41	4.5	5.875	6.50	3/8-16	.125	4.875	5.06	.50
S56	4.875	6.5	3.0	4.0	2.75	3.5	.12	.34	.625	2.06	1.41	4.5	5.875	6.50	3/8-16	.125	5.59	6.31	.50
56	4.875	6.5	3.0	4.0	2.75	3.5	.12	.34	.625	2.06	1.41	4.5	5.875	6.52	3/8-16	.125	6.52	7.75	.50
143T	5.5	6.5	4.0	6.5	2.25*	3.5	.12	.34	.875	2.125	1.41	4.5	5.875	6.52	3/8-16	.125	6.52	7.75	.75
145T	5.5	6.5	4.0	6.5	2.25*	3.5	.12	.34	.875	2.125	1.41	4.5	5.875	6.52	3/8-16	.125	6.52	7.75	.75
182/145TC	7.5	8.5	4.5	5.5	3.5	4.5	.13	.41	.875	2.125	1.41	4.5	5.875	6.52	3/8-16	.125	6.52	7.75	1.13

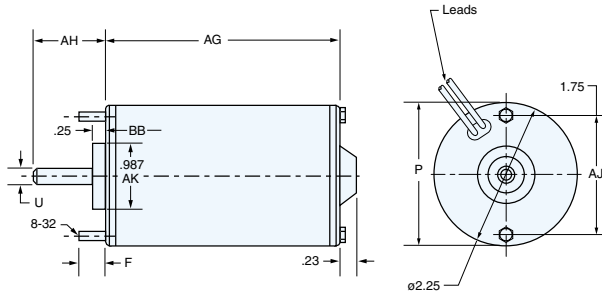
*143-5TC NEMA C Face BA dimension is 2.75".

For C dimension, see motor selection charts.



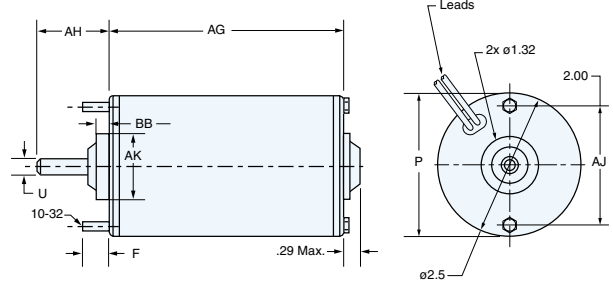
M

TRU-TORQ DC 2.25" FRAME



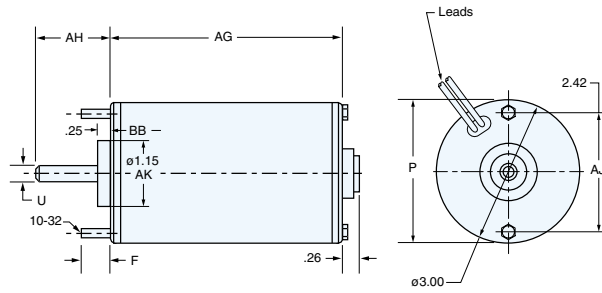
N

TRU-TORQ DC 2.50" FRAME



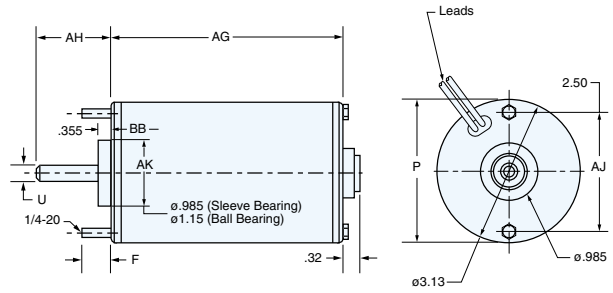
O

TRU-TORQ DC 3.00" FRAME



P

TRU-TORQ DC 3.13" FRAME



TRU-TORQ CUSTOM DC MOTORS (Inches)

Frame & Type	AG	P	U	AH	AJ	TAP	AK	BB	F	
2.25"	A	3.00	2.25	.25	1.50	1.75	8-32	.987	.25	.50
	B	3.67	2.25	.25	1.50	1.75	8-32	.987	.25	.50
2.50"	A	3.34	2.50	.31	1.50	2.00	10-32	1.02	.42	.75
	B	3.68	2.50	.31	1.50	2.00	10-32	1.02	.42	.75
	C	4.41	2.50	.31	1.50	2.00	10-32	1.02	.42	.75
3.00"	A	3.78	3.00	.375	1.50	2.42	10-32	1.15	.25	.75
	B	4.33	3.00	.375	1.50	2.42	10-32	1.15	.25	.75
	C	4.78	3.00	.375	1.50	2.42	10-32	1.15	.25	.75
	D	5.68	3.00	.375	1.50	2.42	10-32	1.15	.25	.75
3.13"	A	3.64	3.13	.375	1.50	2.50	1/4-20	.985	.36	.75
	B	4.85	3.13	.375	1.50	2.50	1/4-20	.985	.36	.75
	C	5.11	3.13	.375	1.50	2.50	1/4-20	.985	.36	.75
	D	5.60	3.13	.375	1.50	2.50	1/4-20	.985	.36	.75
	E	6.54	3.13	.375	1.50	2.50	1/4-20	.985	.36	.75

These dimensions are the usual maximum shaft diameter and shaft length available. For greater length or shaft dimensions, please contact LEESON.