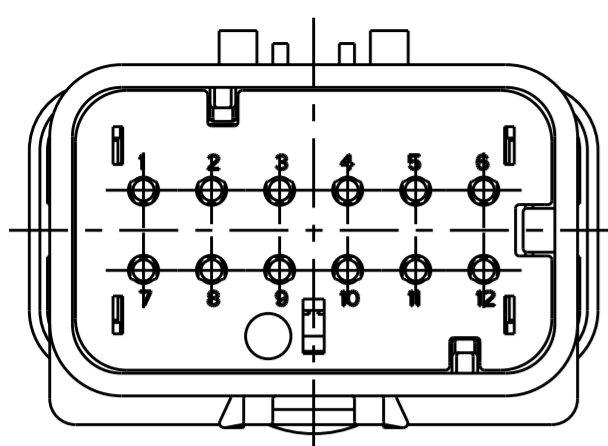
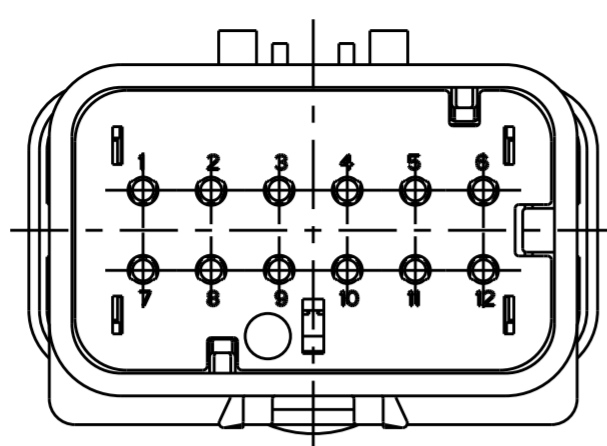


THIS DRAWING IS UNPUBLISHED  
RELEASED FOR PUBLICATION  
COPYRIGHT - ALL RIGHTS RESERVED.

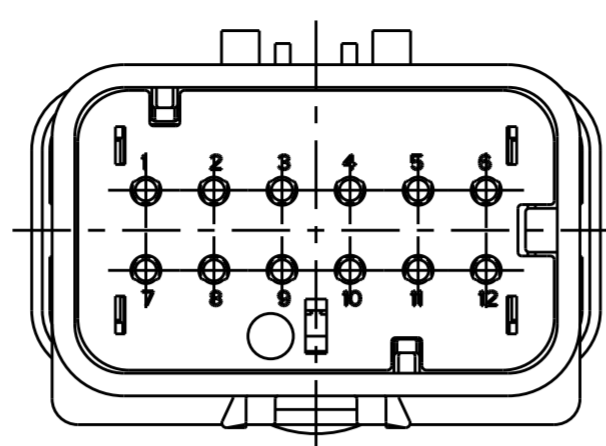
REVISIONS					
P	LTR	DESCRIPTION	DATE	DWN	APVD
A		REL PER ECO-18-016412	12OCT2018	JM	RB
AI		REV PER ECO-18-016694	18OCT2018	JM	RB



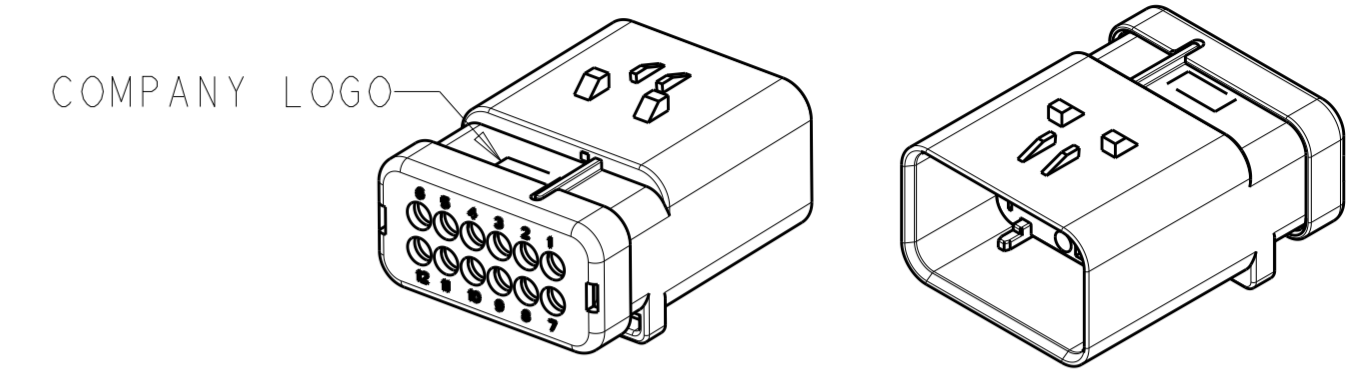
2320918-2  
KEY B  
SCALE 2:1



2320918-3  
KEY C  
SCALE 2:1

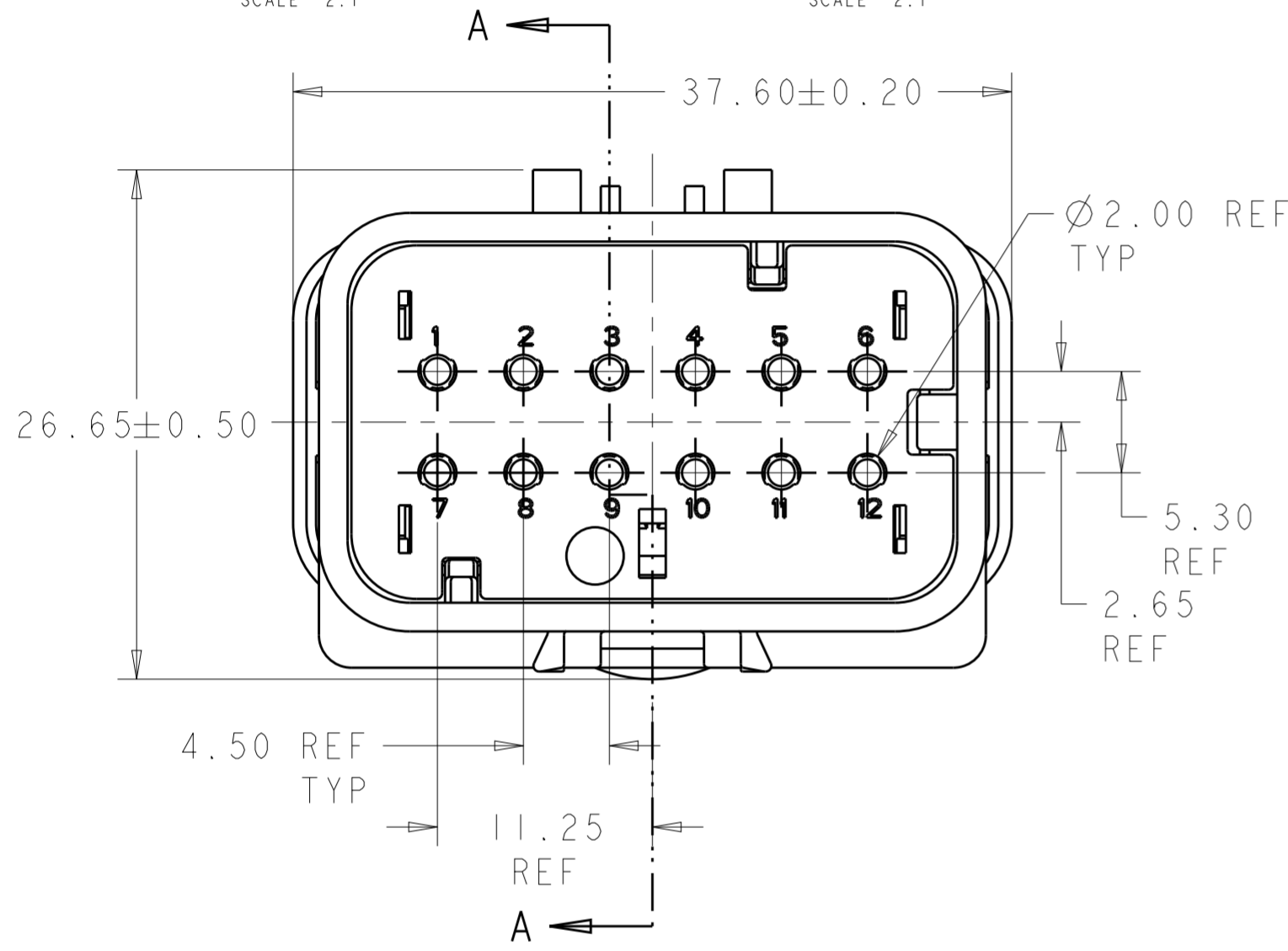


2320918-4  
KEY D  
SCALE 2:1

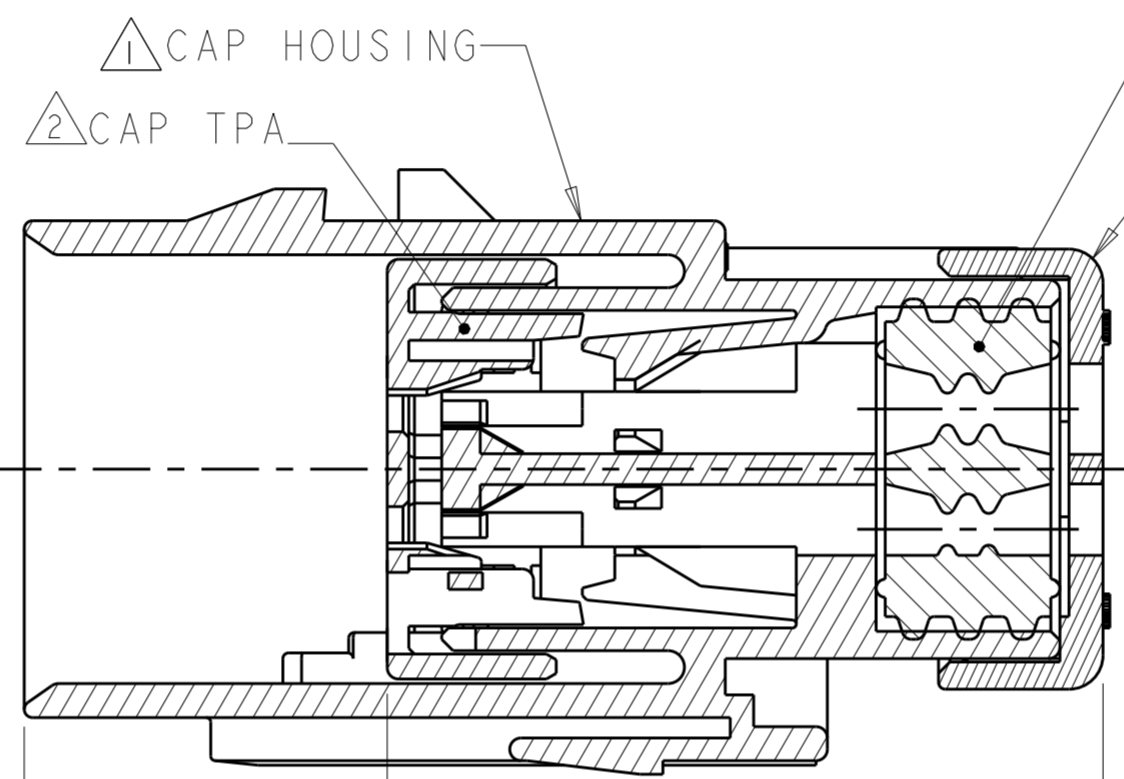


COMPANY LOGO

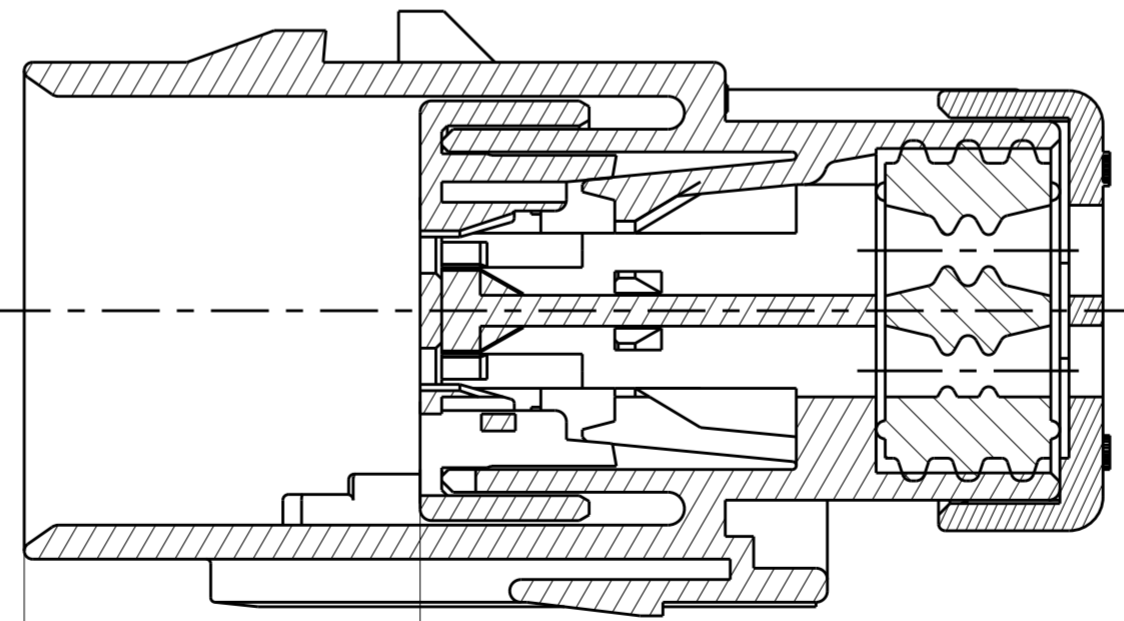
SCALE 1:1



2320918-1 SHOWN  
KEY A



SECTION A-A



SECTION A-A

- 1 MATERIAL: 15% FIBERGLASS REINFORCED PBT  
COLOR: GRAY
- 2 MATERIAL: 15% FIBERGLASS REINFORCED PBT  
COLOR: (SEE TABLE)
- 3 MATERIAL: SILICONE  
COLOR: GREEN
- 4. RECOMMENDED WIRE DIAMETER RANGE IS 2.18 TO 3.67mm.
- 5. RECOMMENDED BACKSHELLS:  
STRAIGHT EXIT  
A. 2292865-1 SMOOTH WIRE EXIT  
B. 2292865-2 NC20/NW17 CONDUIT WIRE EXIT  
C. 2292865-3 NC16/NW13 CONDUIT WIRE EXIT  
90° EXIT  
D. 2302486-1 SMOOTH WIRE EXIT  
E. 2302486-2 NC20/NW17 CONDUIT WIRE EXIT  
F. 2302486-3 NC16/NW13 CONDUIT WIRE EXIT
- 6. RECOMMENDED SEAL PLUG: 776363-1
- 7. MATING CONNECTOR: 2320925-X.

D	ORANGE	2320918-4
C	PURPLE	2320918-3
B	BLUE	2320918-2
A	TAN	2320918-1
KEY	TPA COLOR	PART NUMBER

THIS DRAWING IS A CONTROLLED DOCUMENT.

DIMENSIONS:	TOLERANCES UNLESS OTHERWISE SPECIFIED:	DWN	J. MCNEAL	16MAR2018
mm	0 PLC ± 1 PLC ± 2 PLC ±0.30 3 PLC ± 4 PLC ±	CHK	R. BALTER	16MAR2018
	ANGLES ± FINISH -	APVD	R. BALTER	16MAR2018
MATERIAL	-	PRODUCT SPEC	108-2184	
	-	APPLICATION SPEC	114-13065	
	-	WEIGHT	22.5±1g	
		Customer Drawing	SIZE	A2
			CAGE CODE	-
			DRAWING NO	G-2320918
			RESTRICTED TO	-
			SCALE	1:1
			SHEET	OF
			REV	AI

**STE** TE Connectivity

NAME: CAP ASSEMBLY, 12 POSITION, STD DIA SEAL, HIGH TEMP, AMPSEAL 16