

This document is the property of Amphenol Corporation and is delivered on the express condition that it is not to be disclosed, reproduced or used, in whole or in part, for manufacture or sale by anyone other than Amphenol Corporation without its prior consent, & that no right is granted to disclose or to use any information in this document.

# CUSTOMER DRAWING

## REVISIONS

SYM	ECN	DESCRIPTION	DATE	APPROVED
1	CDXXXX	PRELIMINARY PROPOSAL	Jul.17,2020	YH
2	CD2340	UPDATE DRAWING	Nov.11,2020	YH
3	CDXXXX	ADD PACKING DETAILS	Jan.26,2021	YH

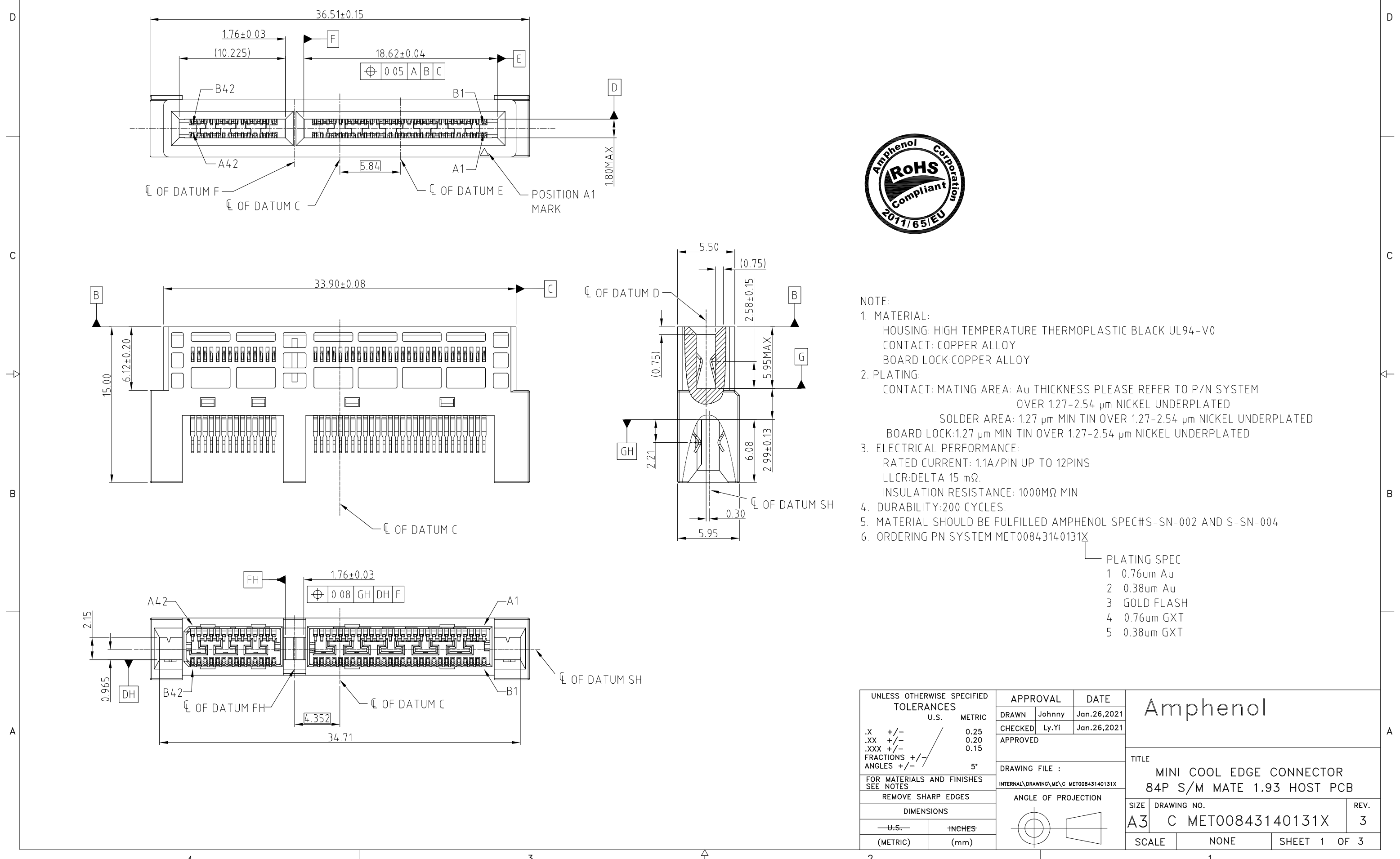


**NOTE:**

- MATERIAL:**  
HOUSING: HIGH TEMPERATURE THERMOPLASTIC BLACK UL94-V0  
CONTACT: COPPER ALLOY  
BOARD LOCK: COPPER ALLOY
- PLATING:**  
CONTACT: MATING AREA: Au THICKNESS PLEASE REFER TO P/N SYSTEM  
OVER 1.27-2.54 μm NICKEL UNDERPLATED  
SOLDER AREA: 1.27 μm MIN TIN OVER 1.27-2.54 μm NICKEL UNDERPLATED  
BOARD LOCK: 1.27 μm MIN TIN OVER 1.27-2.54 μm NICKEL UNDERPLATED
- ELECTRICAL PERFORMANCE:**  
RATED CURRENT: 1.1A/PIN UP TO 12PINS  
LLCR: DELTA 15 mΩ  
INSULATION RESISTANCE: 1000MΩ MIN
- DURABILITY:** 200 CYCLES.
- MATERIAL SHOULD BE FULFILLED AMPHENOL SPEC#S-SN-002 AND S-SN-004
- ORDERING PN SYSTEM MET00843140131X

- PLATING SPEC
- 0.76um Au
  - 0.38um Au
  - GOLD FLASH
  - 0.76um GXT
  - 0.38um GXT

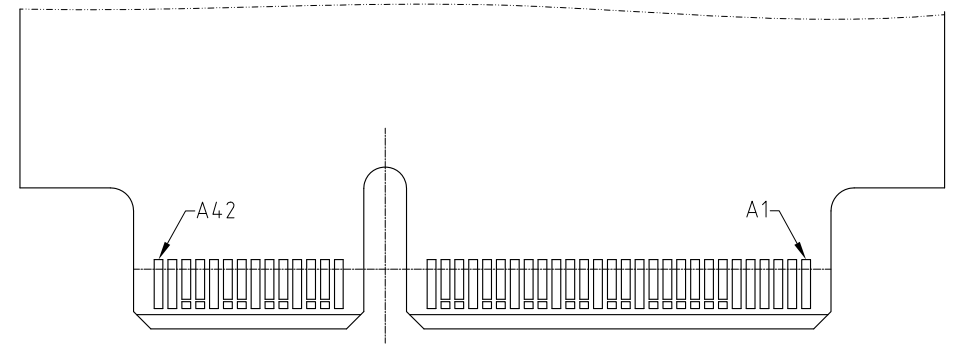
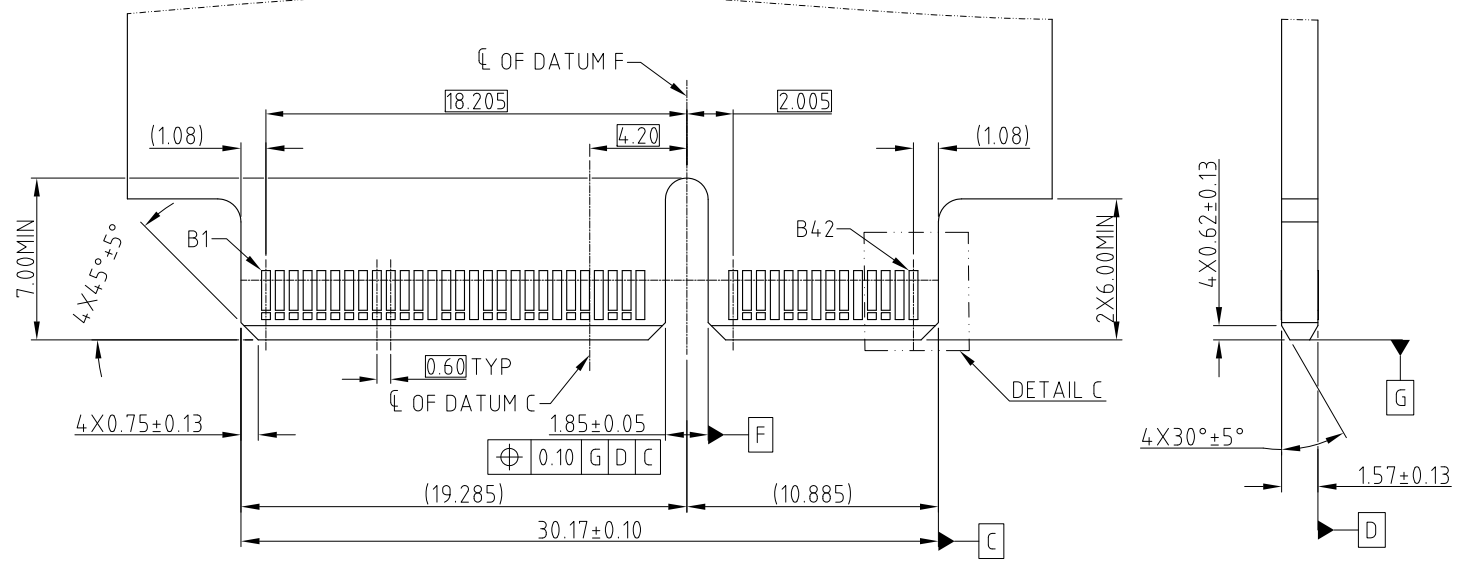
UNLESS OTHERWISE SPECIFIED TOLERANCES		APPROVAL	DATE	Amphenol
	U.S. METRIC	DRAWN Johnny	Jan.26,2021	
.X +/-	0.25	CHECKED Ly.Yi	Jan.26,2021	
.XX +/-	0.20	APPROVED		TITLE
.XXX +/-	0.15			MINI COOL EDGE CONNECTOR
FRACTIONS +/-	5°	DRAWING FILE :		84P S/M MATE 1.93 HOST PCB
ANGLES +/-		INTERNAL\DRAWING\ME\C MET00843140131X		SIZE
FOR MATERIALS AND FINISHES SEE NOTES		ANGLE OF PROJECTION		DRAWING NO.
REMOVE SHARP EDGES				A3 C MET00843140131X
DIMENSIONS				REV.
—U.S.—	INCHES			3
(METRIC)	(mm)			SCALE
				NONE
				SHEET 1 OF 3



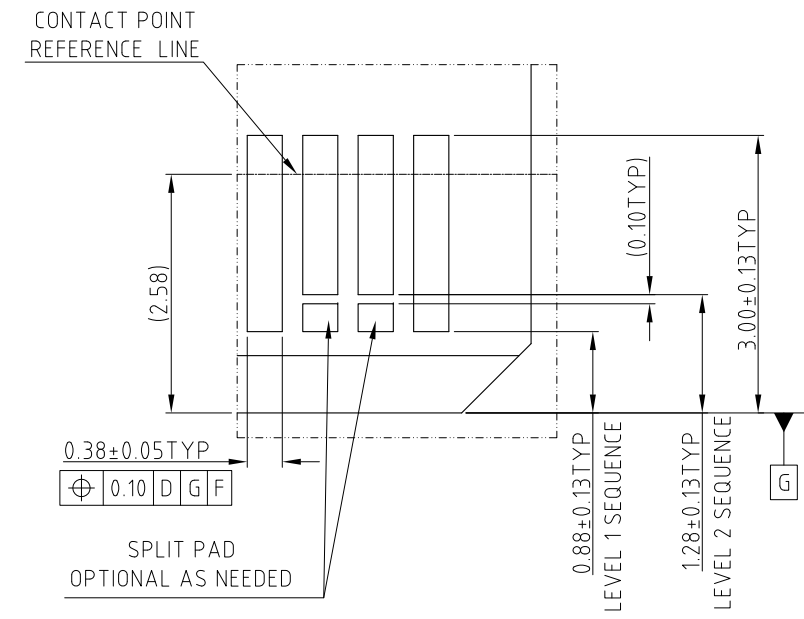
This document is the property of Amphenol Corporation and is delivered on the express condition that it is not to be disclosed, reproduced or used, in whole or in part, for manufacture or sale by anyone other than Amphenol Corporation without its prior consent, & that no right is granted to disclose or to use any information in this document.

# CUSTOMER DRAWING

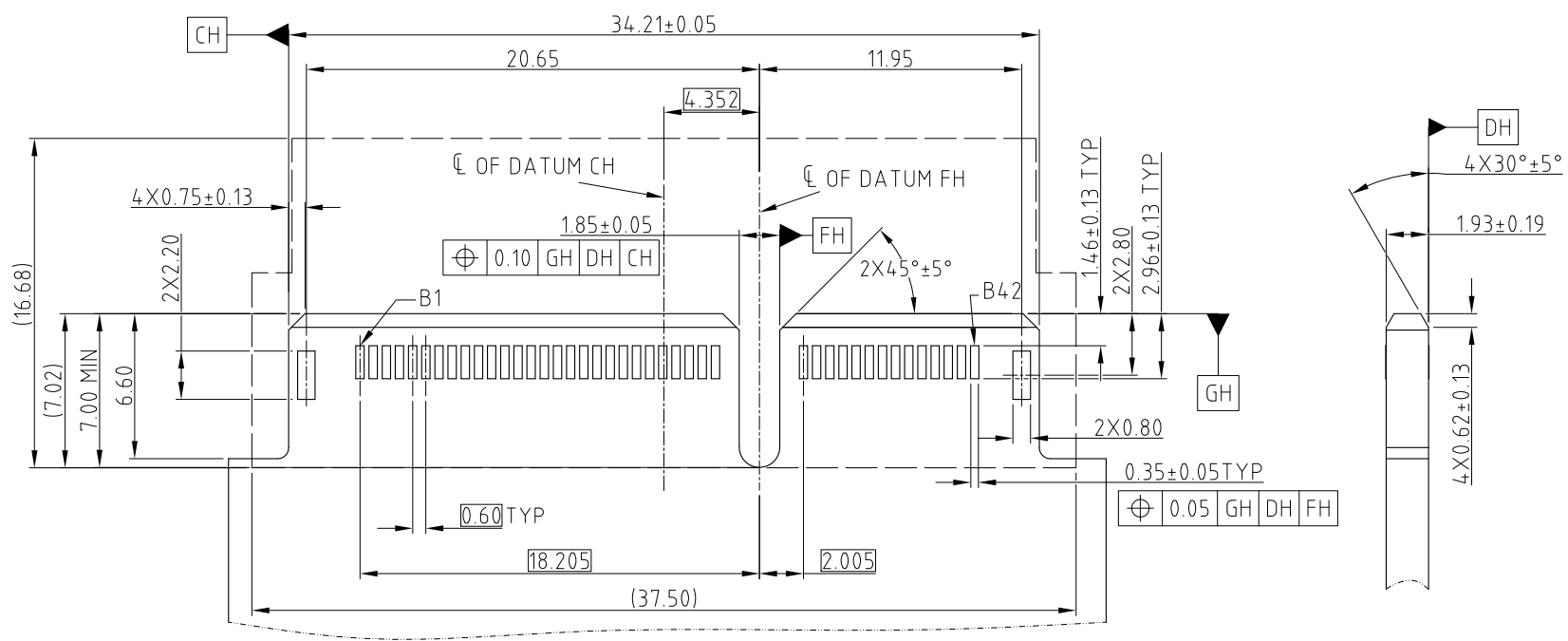
REVISIONS				
SYM	ECN	DESCRIPTION	DATE	APPROVED
		SEE SHEET 1		



RECOMMENDED AIC MATING CARD



DETAIL C SCALE 4:1

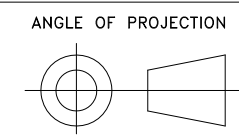


NOTE: POSITION A1 ON THE OPPOSITE SIDE OF CARD OF B1  
84-PIN STRADDLE MOUNT FOOTPRINT  
GENERAL TOLERANCE ±0.05MM

UNLESS OTHERWISE SPECIFIED TOLERANCES	
U.S.	METRIC
.X +/-	0.25
.XX +/-	0.20
.XXX +/-	0.15
FRACTIONS +/-	
ANGLES +/-	5°

APPROVAL	DATE
DRAWN Johnny	Jan.26,2021
CHECKED Ly.Yi	Jan.26,2021
APPROVED	

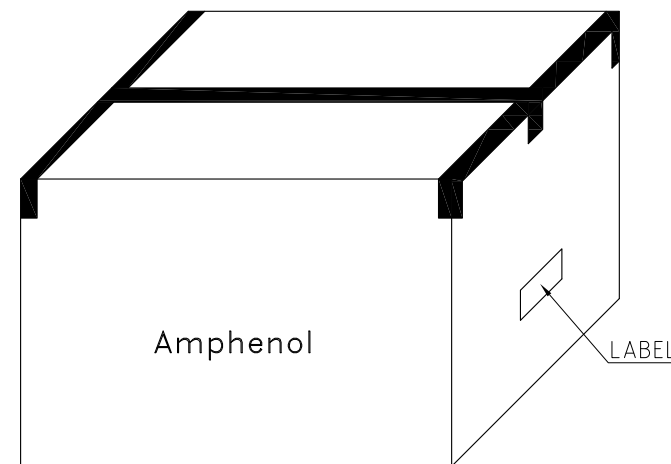
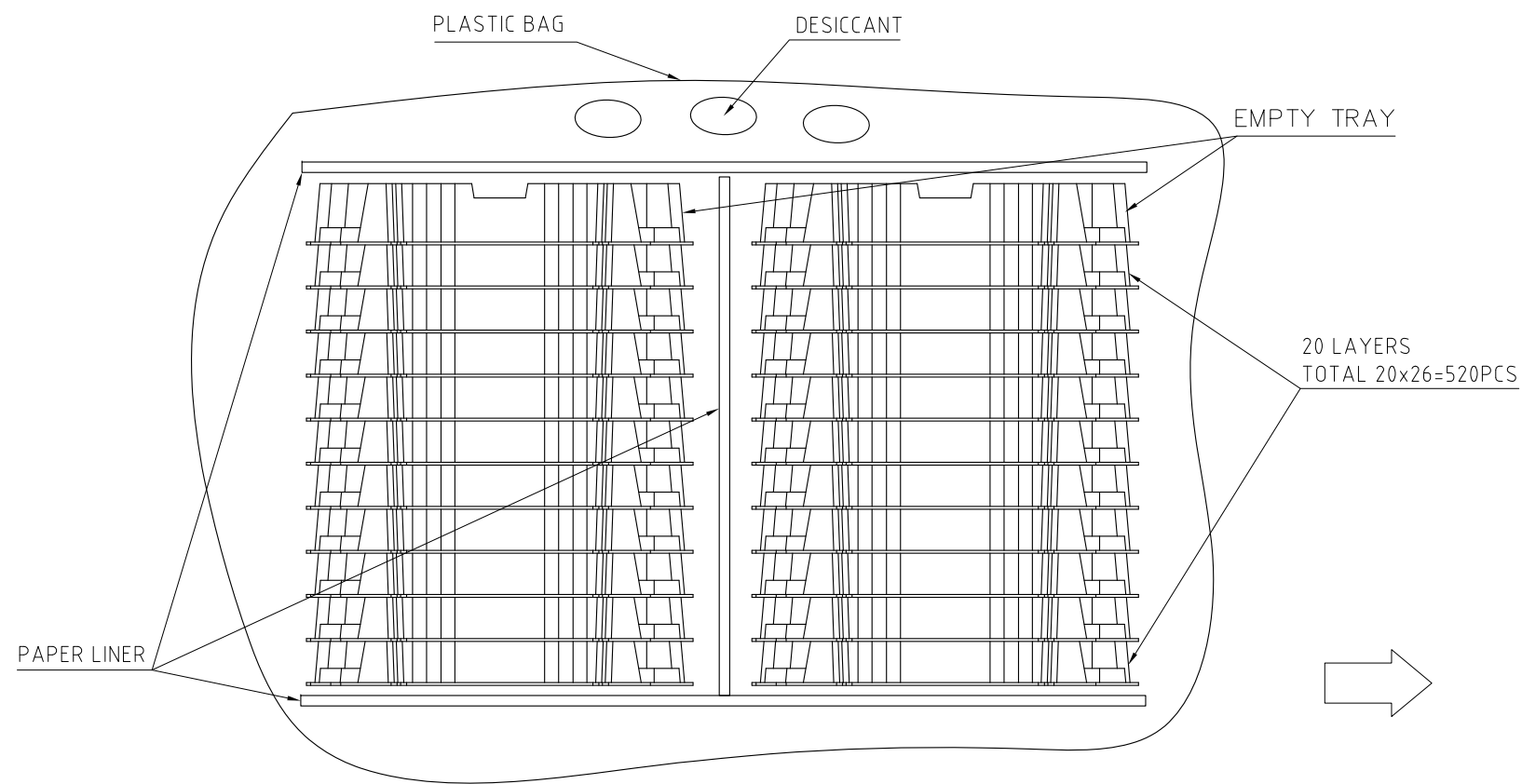
Amphenol		
TITLE MINI COOL EDGE CONNECTOR 84P S/M MATE 1.93 HOST PCB		
SIZE A3	DRAWING NO. C MET00843140131X	REV. 3
SCALE NONE	SHEET 2 OF 3	



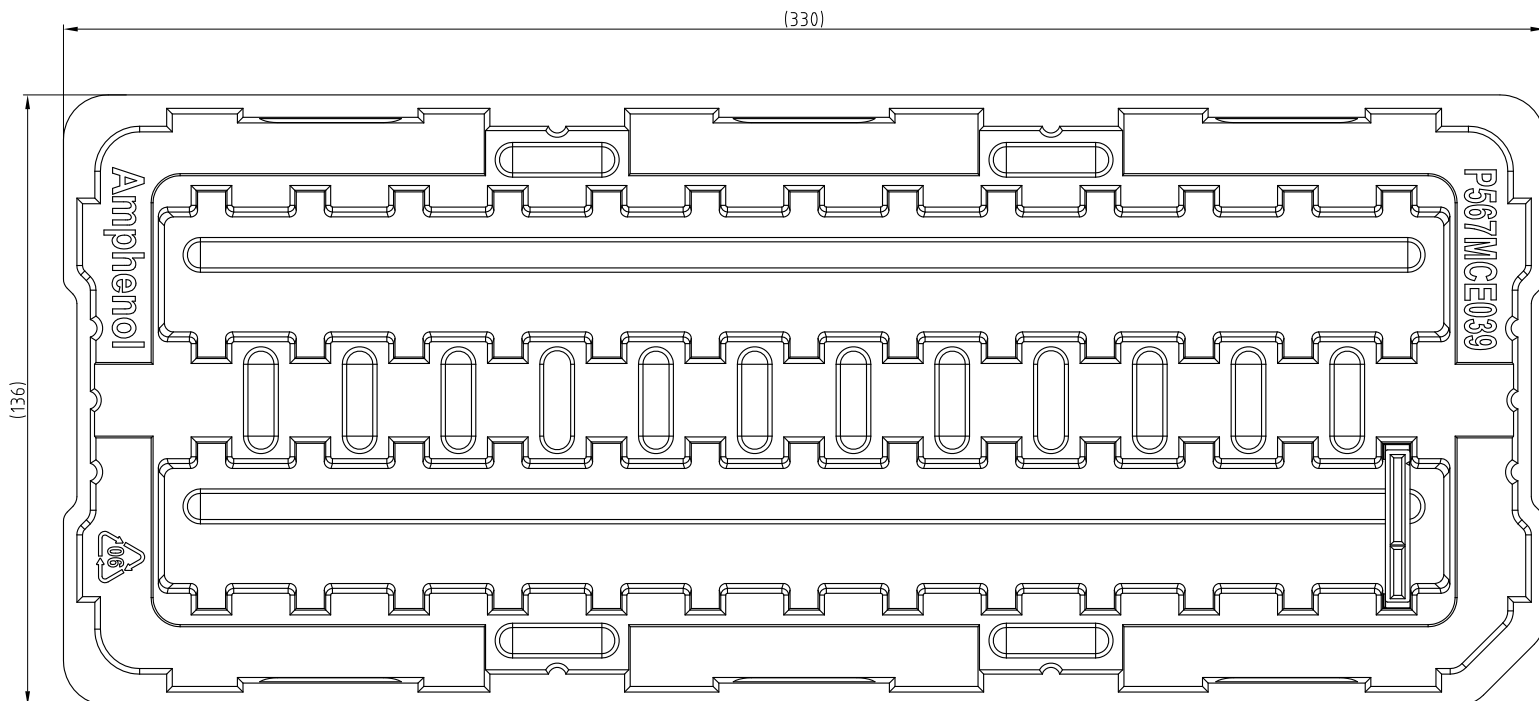
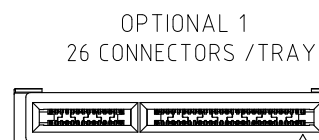
This document is the property of Amphenol Corporation and is delivered on the express condition that it is not to be disclosed, reproduced or used, in whole or in part, for manufacture or sale by anyone other than Amphenol Corporation without its prior consent, & that no right is granted to disclose or to use any information in this document.

# CUSTOMER DRAWING

REVISIONS				
SYM	ECN	DESCRIPTION	DATE	APPROVED
		SEE SHEET 1		



520PCS / CARTON



UNLESS OTHERWISE SPECIFIED TOLERANCES	
U.S.	METRIC
.X +/-	0.25
.XX +/-	0.20
.XXX +/-	0.15
FRACTIONS +/-	
ANGLES +/-	5°
FOR MATERIALS AND FINISHES SEE NOTES	
REMOVE SHARP EDGES	
DIMENSIONS	
—U.S.—	INCHES
(METRIC)	(mm)

APPROVAL	DATE
DRAWN Johnny	Jan.26,2021
CHECKED Ly.Yi	Jan.26,2021
APPROVED	
DRAWING FILE :	
INTERNAL\ME\C MET00843140131X	
ANGLE OF PROJECTION	

Amphenol		
TITLE		
MINI COOL EDGE CONNECTOR 84P S/M MATE 1.93 HOST PCB		
SIZE	DRAWING NO.	REV.
A3	C MET00843140131X	3
SCALE	NONE	SHEET 3 OF 3