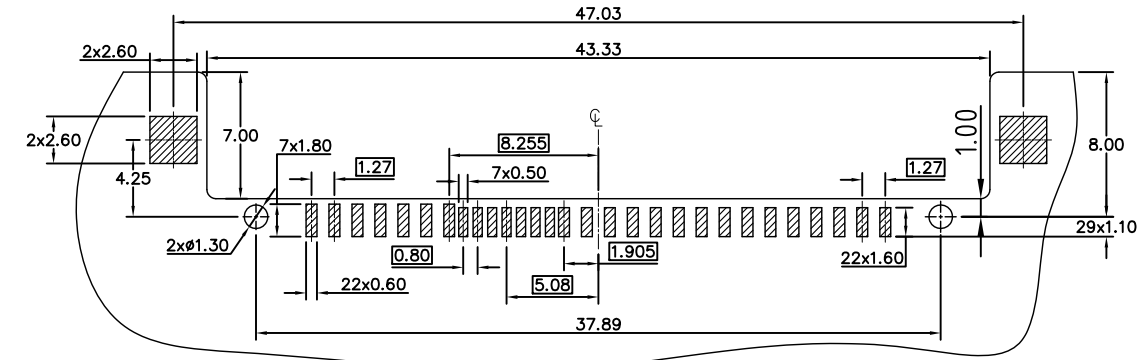
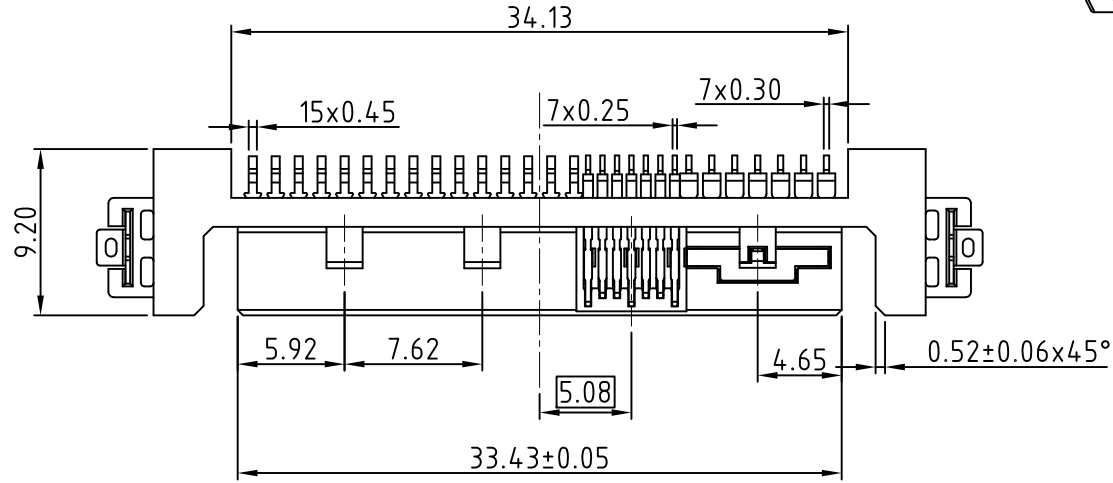
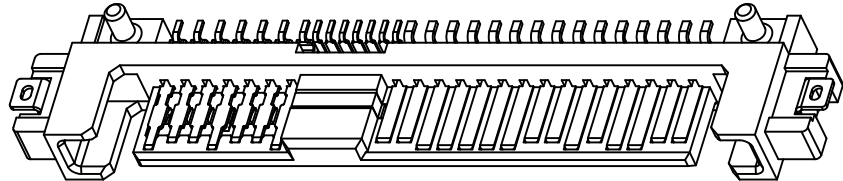
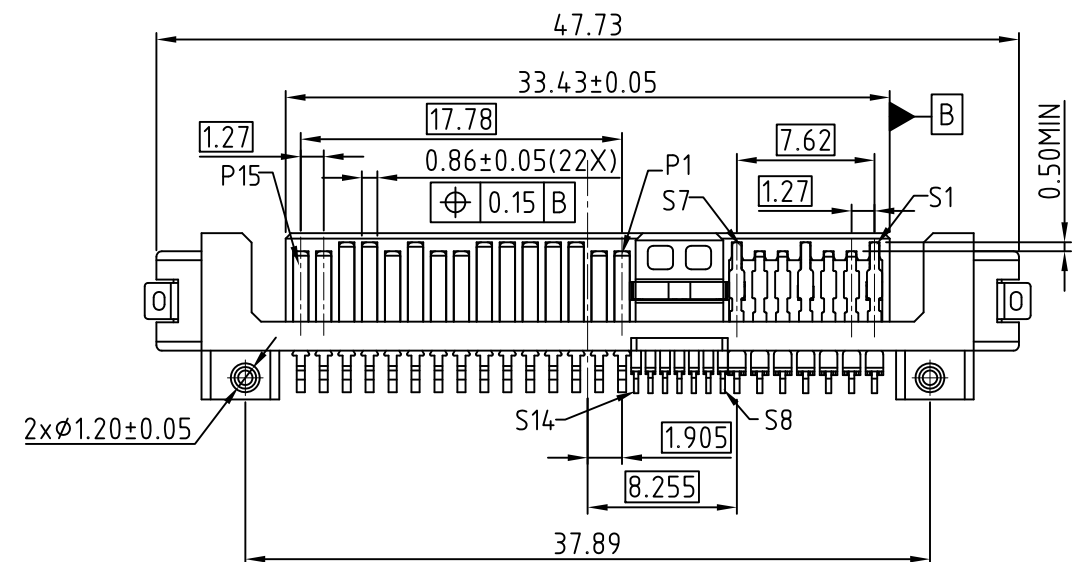
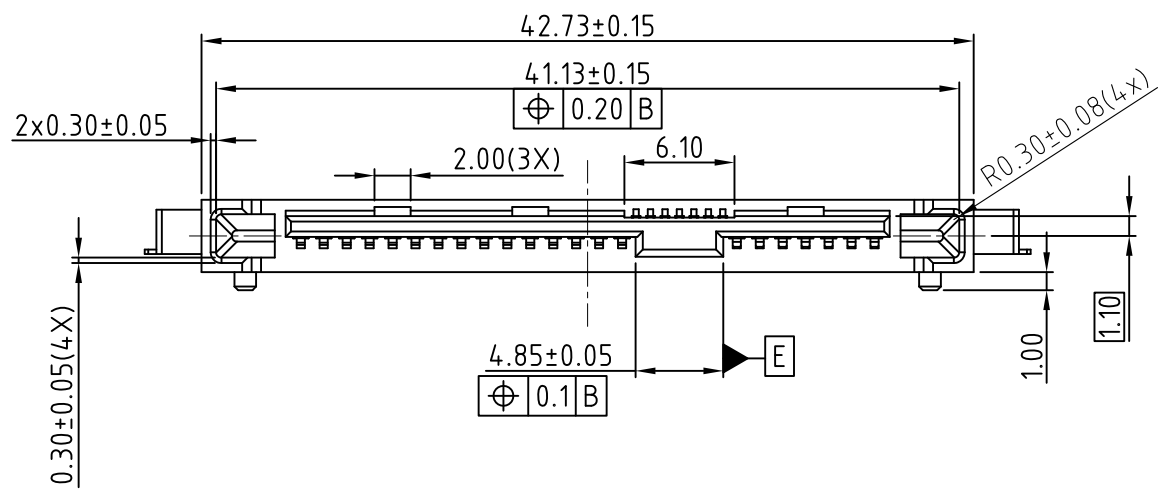
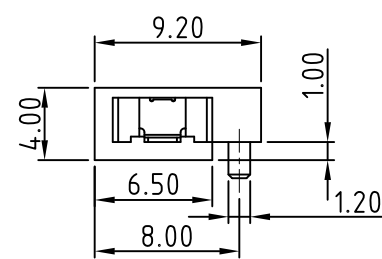
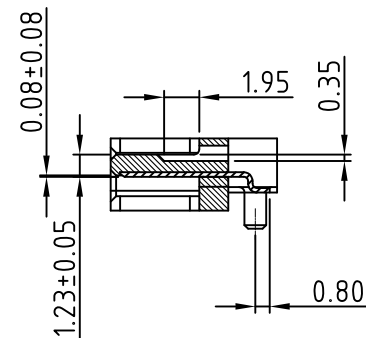


This document is the property of Amphenol Corporation and is delivered on the express condition that it is not to be disclosed, reproduced or used, in whole or in part, for manufacture or sale by anyone other than Amphenol Corporation without its prior consent, & that no right is granted to disclose or to use any information in this document.

REVISIONS				
SYM	ECN	DESCRIPTION	DATE	APPROVED
1	N/A	FIRST RELEASE	08/12/16	IP
2	N/A	ADD DIMS MARK BY CUSTOMER REQUEST	09/07/16	IP
3	N/A	ADD POST HOLE DIA.	07/02/18	IP



RECOMMENDED PCB LAYOUT  
GENERAL TOLERANCE ±0.05mm



- NOTES:
- MATERIAL  
HOUSING: HIGH TEMPERATURE PLASTIC. UL94V-0, BLACK.  
CONTACT: BRASS  
PLATING: REFER TO P/N SYSTEM ON MATING AREA  
1.27um MIN NICKEL UNDERPLATE OVERALL  
2.54um MIN PURE TIN ON SOLDER TAIL  
SOLDER TABS:  
BRASS, 2.54um MIN PURE TIN PLATED OVERALL  
1.27um MIN NICKEL UNDERPLATED
  - ELECTRICAL SPECIFICATION:  
CURRENT RATING: 1.5A  
CONTACT RESISTANCE: 30mΩ MAX.  
INSULATOR RESISTANCE: 1000 MΩ MIN.  
DIELECTRIC WITHSTANDING VOLTAGE: 500V AC
  - DIMENSIONING SHALL BE INTERPRETED PER ASME Y14.5M 1994
  - MATERIAL SHOULD BE FULFILLED Amphenol SPEC#S-SN-002, FOR HALOGEN FREE PRODUCTS, ALSO NEED TO MEET SSN-004
  - ORDER P/N SYSTEM:  
(PN WITH/WITHOUT SEPARATE "-" IS THE SAME.)  
SAS4-M213-002-X-XX

- MATING AREA PLATING      PACKING STYLE
- 1- 0.76um MIN Au.                      C- TRAY
  - 2- 0.38um MIN Au.                      TR- TAPE AND REEL
  - 3- GOLD FLASH

CUSTOMER DRAWING



UNLESS OTHERWISE SPECIFIED TOLERANCES U.S.      METRIC 0.0      +/-      0.50 0.00      +/-      0.20 0.000      +/- FRACTIONS +/- ANGLES +/-      5°	APPROVAL	DATE	Amphenol Amphenol East Asia Limited
	DRAWN CHECKED CHECKED	Evan Dai 07/02/18	
FOR MATERIALS AND FINISHES SEE NOTES	DRAWING FILE : \\DRAWING\SAS\SAS4M213002XXX-3		TITLE CUSTOMER DRAWING FOR SAS4 R/A SMT SINK PLUG
REMOVE SHARP EDGES	ANGLE OF PROJECTION		SIZE A3
DIMENSIONS U.S.      INCHES (METRIC)      (MM)			DRAWING NO. SAS4-M213-002-X-XX
	SCALE	N/A	REV. 3
		SHEET 1 OF 1	