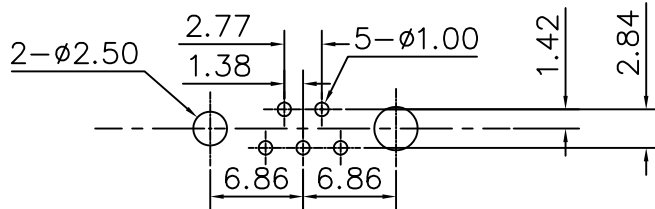
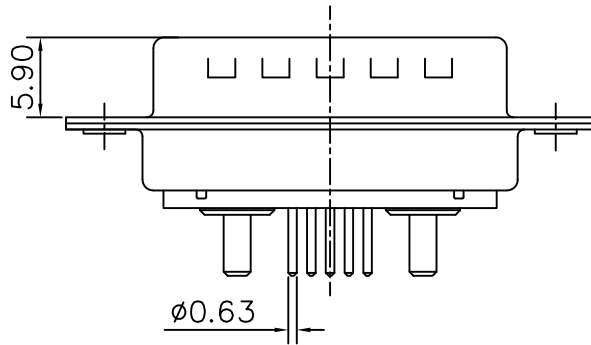
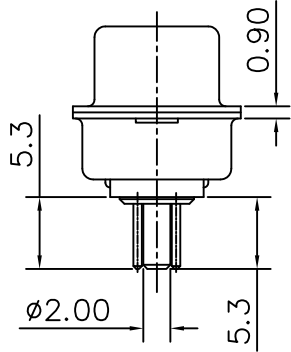
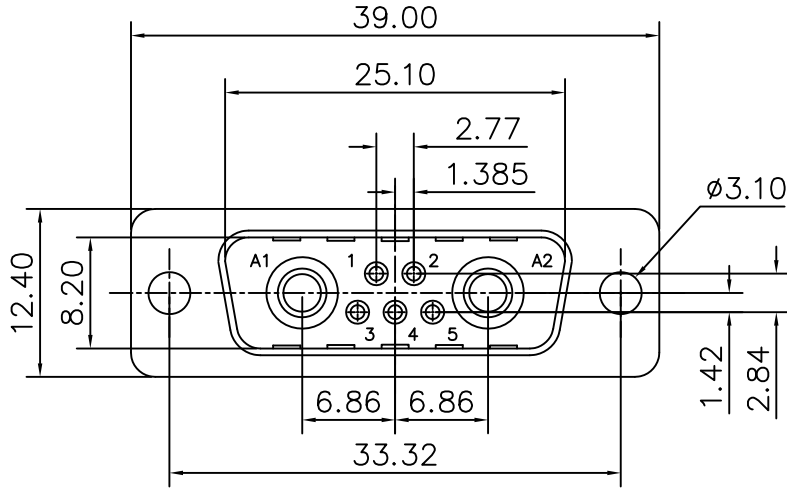


This document is the property of Amphenol Corporation and is delivered on the express condition that it is not to be disclosed, reproduced or used, in whole or in part, for manufacture or sale by anyone other than Amphenol Corporation without its prior consent, & that no right is granted to disclose or to use any information in this document.



RECOMMENDED P.C.B LAYOUT

(TOLERANCE +/-0.05)

Customer Drawing

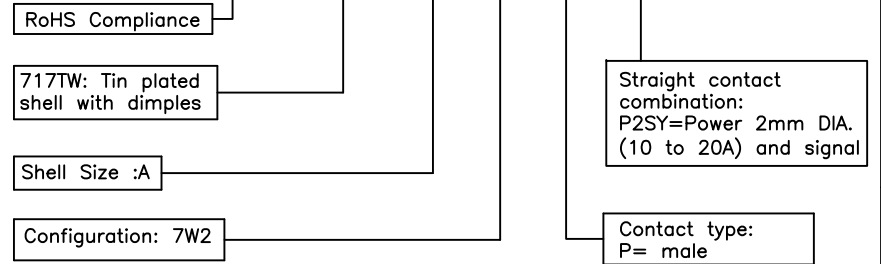
REVISIONS				
SYM	ECN	DESCRIPTION	DATE	APPROVED
1	HK--	First Release Drawing	06/21/08	IP

D-SUB TECHNICAL DATA

SHELL : Steel 2.5um(100u") min tin over 1.25um(50u") min nickel
 BODY : Glass filled thermoplastic.
 Flame retardant to UL94 V-0,Color Black.
 CONTACT: Brass
 signal contacts: 0.4um(15u") gold over 1.25um(50u") min Nickel
 power contacts 0.4um(15u") min gold over 1.25um(50u") min nickel
 power pins: 2.5um(100u") min sn over 1.25um(50u") min nickel on solder area
 ELECTRICAL:Voltage rating Signal and power contacts: 300 V RMS at 50 Hz
 Current rating: Singal contacts 7.5A. power contacts 10A to 20A.
 Withstanding Voltage >1000 V RMS at 50 Hz for one minute
 Insulation resistance >5000 M Ohms
 Contact resistance 20 mOhms max.
 CLIMATIC : Temperature range -55 °C up to +155°C
 Damp heat 56 days(40 °C-95% HR)
 MARKING : Amphenol...(Series No.)
 Commercial reference
 Manufacturing date

PRODUCT CODE

L 717TW A 7W2 P P2SY



UNLESS OTHERWISE SPECIFIED TOLERANCES		APPROVAL	DATE
U.S.	METRIC	DRAWN	DATE
.X +/-	0.50	Lisa.peng	06/21/08
.XX +/-	0.30	CHECKED	06/21/08
.XXX +/-	0.20	CHECKED	
FRACTIONS +/-			
ANGLES +/-	2'		
FOR MATERIALS AND FINISHES SEE NOTES		DRAWING FILE :	
REMOVE SHARP EDGES		ANGLE OF PROJECTION	
DIMENSIONS			
U.S.	INCHES		
METRIC	MM		

Amphenol		Amphenol East Asia Limited	
TITLE Hybrid connector, TW series			
SIZE	DRAWING NO.	REV.	
A4	C L717TWA7W2PP2SY	1	
SCALE	NONE	SHEET 1 OF 1	