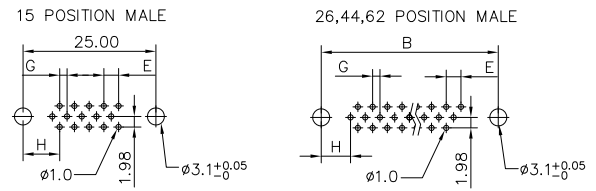
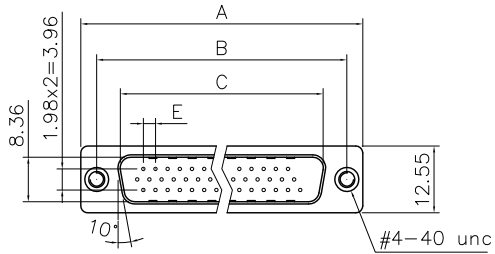
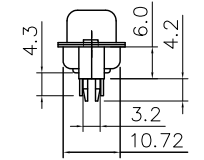
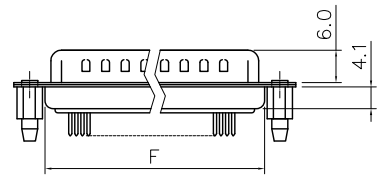


This document is the property of Amphenol Corporation and is delivered on the express condition that it is not to be disclosed, reproduced or used, in whole or in part, for manufacture or sale by anyone other than Amphenol Corporation without its prior consent, & that no right is granted to disclose or to use any information in this document.

# Customer drawing

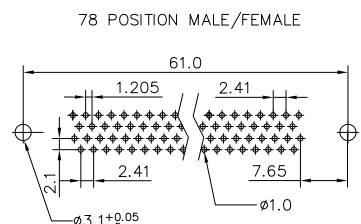
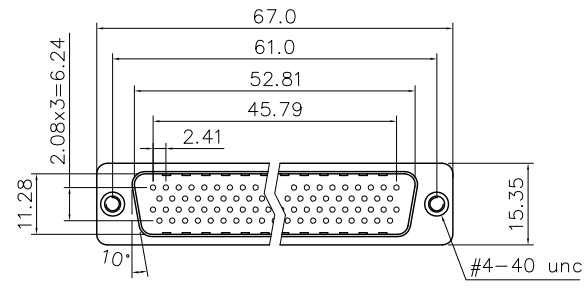


RECOMMENDED P.C.B LAYOUT  
(TOLERANCE +/-0.05)

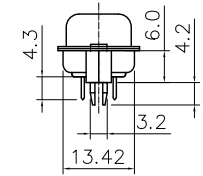
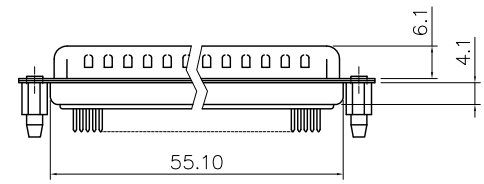


### Dimensions

Positions	A	B	C	E	F	G	H
15	30.81	24.99	16.92	2.29	19.20	1.145	7.04
26	39.20	33.30	25.25	2.29	27.70	1.145	6.88
44	53.05	47.04	38.96	2.29	41.10	1.145	6.88
62	69.40	63.50	55.42	2.41	57.30	1.205	7.00



RECOMMENDED P.C.B LAYOUT  
(TOLERANCE +/-0.05)



78 Positions



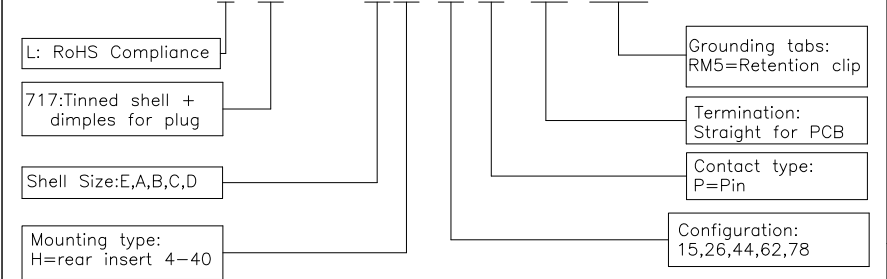
REVISIONS				
SYM	ECN	DESCRIPTION	DATE	APPROVED
1	HK--	First Release Drawing	11/26/12	IP
2	HK--	Update the Drawing	12/27/13	IP

### D-SUB TECHNICAL DATA

SHELL : Steel, 100u" Tin Over 50u" min nickel over 50u" min Copper  
 BODY : Glass-Filled Thermoplastic PBT,UL94V-0  
 CONTACTS : Copper alloy  
 Gold flash over 50u" nickel on mating area  
 100u" tin over 50u" nickel on solder area  
 BOARDLOCK: Brass, Tin Plated  
 ELECTRICAL : Voltage rating 250 VAC/Rms 60Hz  
 Current Rating :3 AMP  
 Withstanding Voltage >500 VAC Rms  
 Insulation resistance >1000 M Ohms  
 Contact resistance 20 mOhms max  
 MARKING : Amphenol...(Series No.)  
 Commercial reference  
 Manufacturing date

### PRODUCT CODE

L 717 HD X H XX P OL2 RM5



UNLESS OTHERWISE SPECIFIED TOLERANCES	APPROVAL		DATE
	DRAWN	Checked	
U.S. METRIC	Felix Liu	Tony Tang	12/27/13
.X +/- 0.50			
.XX +/- 0.30			
.XXX +/- 0.20			
FRACTIONS +/-			
ANGLES +/- 5°			
FOR MATERIALS AND FINISHES SEE NOTES	DRAWING FILE :		
REMOVE SHARP EDGES	ANGLE OF PROJECTION		
DIMENSIONS			
U.S. INCHES			
METRIC MM			

Amphenol		Amphenol East Asia Limited
TITLE		
Stamped and formed contact,HD series		
SIZE	DRAWING NO.	REV.
A4	C L717HDXHXXPOL2RM5	2
SCALE	NONE	SHEET 1 OF 1