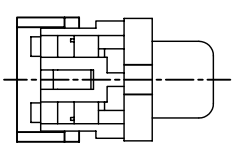
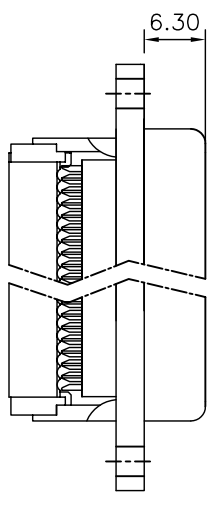
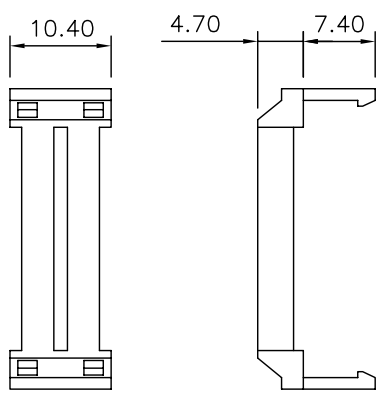
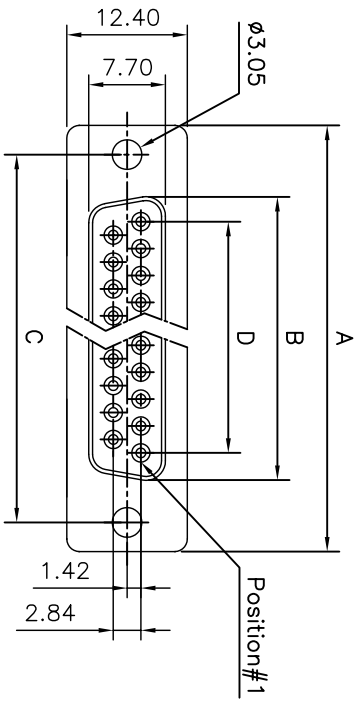


This document is the property of Amphenol Corporation and is delivered on a non-exclusive basis. It is not to be reproduced, stored in a retrieval system, or transmitted in any form or by any means, electronic, mechanical, photocopying, recording, or by any information storage and retrieval system, without the prior consent, in writing, of Amphenol Corporation. To see any restriction in this document.



Customer drawing

Nb OF CONTACTS	A	B	C	D
09	30.50	16.00	25.00	11.08
15	39.00	24.27	33.32	19.39
25	53.08	38.22	47.04	33.24
37	69.40	54.65	63.50	49.86



REVISONS		DATE	APPROVED
1	SMI EDN	11/13/08	

D-SUB TECHNICAL DATA

BODY : Glass filled thermoplastic. Flame retarding to UL94 V-0

CONTACTS : Brass

15u" min gold over 50u" min nickel on mating area
100u" min tin over 50u" min nickel on solder area

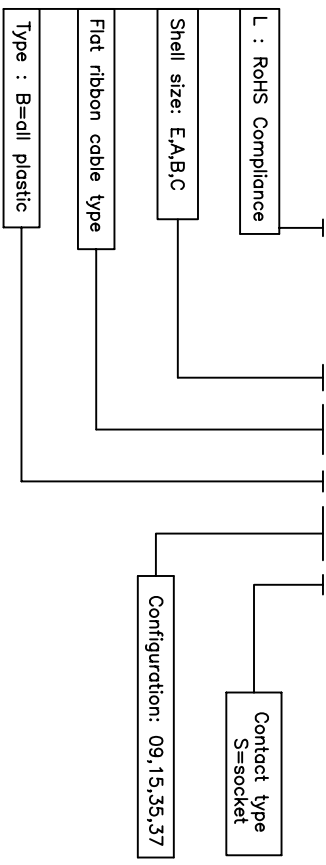
ELECTRICAL : Voltage rating : 250 V RMS at 60 Hz
Current rating : 5A
Withstanding voltage :1000 V RMS at 60 Hz for one minute
Insulation resistance >1000 M Ohms
Contact resistance 20 mOhms max.

CLIMATIC : Temperature range -40 °C up to 125°C

MARKING : Amphenol...(Series No.)
Commercial reference
Manufacturing date

PRODUCT CODE

L 117DXFRBXXS



DIMENSIONS SPECIFIED		APPROVAL		DATE	
TOLERANCES	METRIC	DRAWN	Checked	H/18/08	
0.40		CHECKED	DATE	11/18/08	
0.30					
0.20					
5°					

TITLE		SIZE		SCALE	
IDC Flat Cable D-Sub Series		A4	C	NONE	SHEET 1 OF 1
Amphenol®		REV.			
		1			